



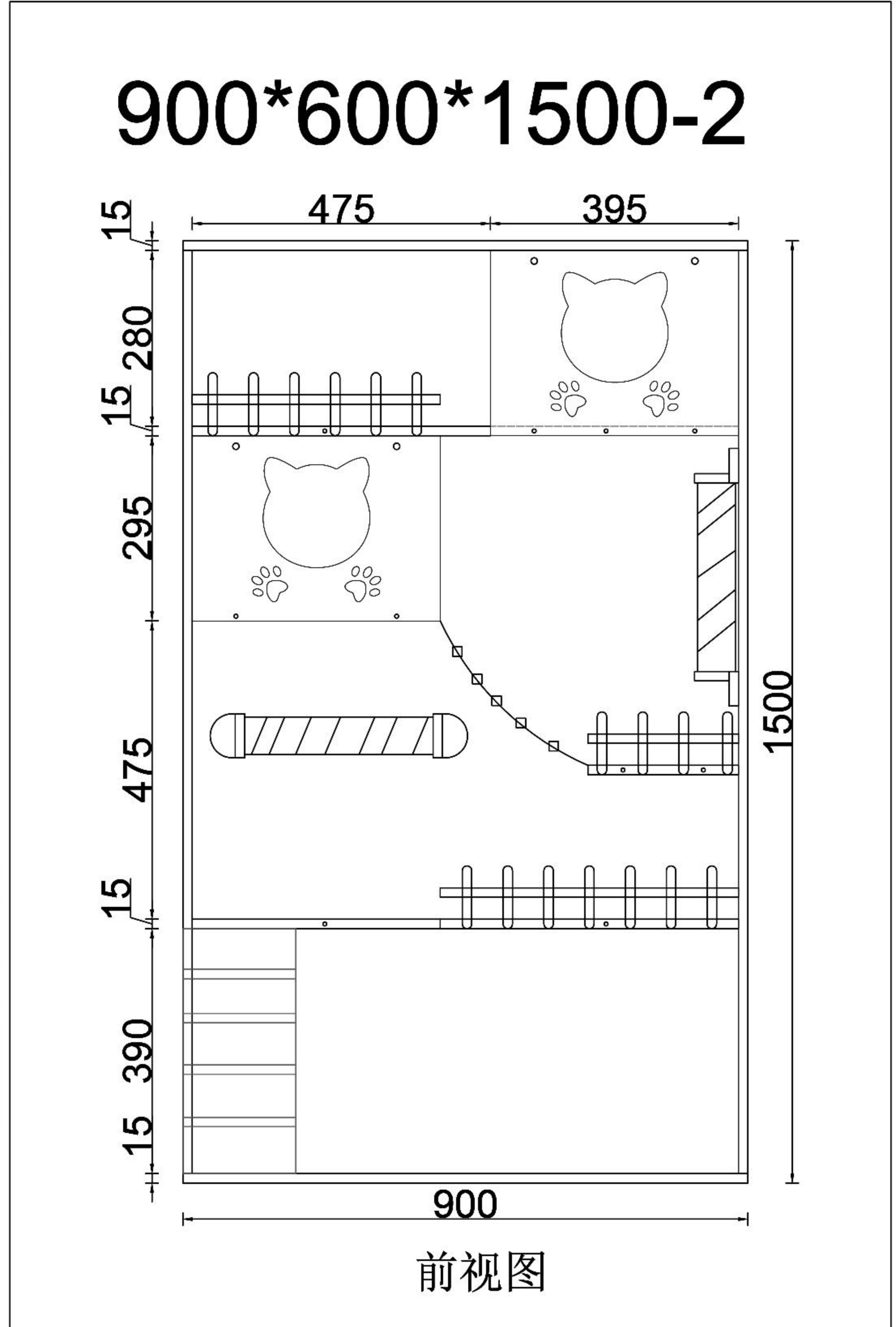
Cowhorn lock hinge screw



Three in one screw



Rendering



Dimension



1. Install the embedded nut



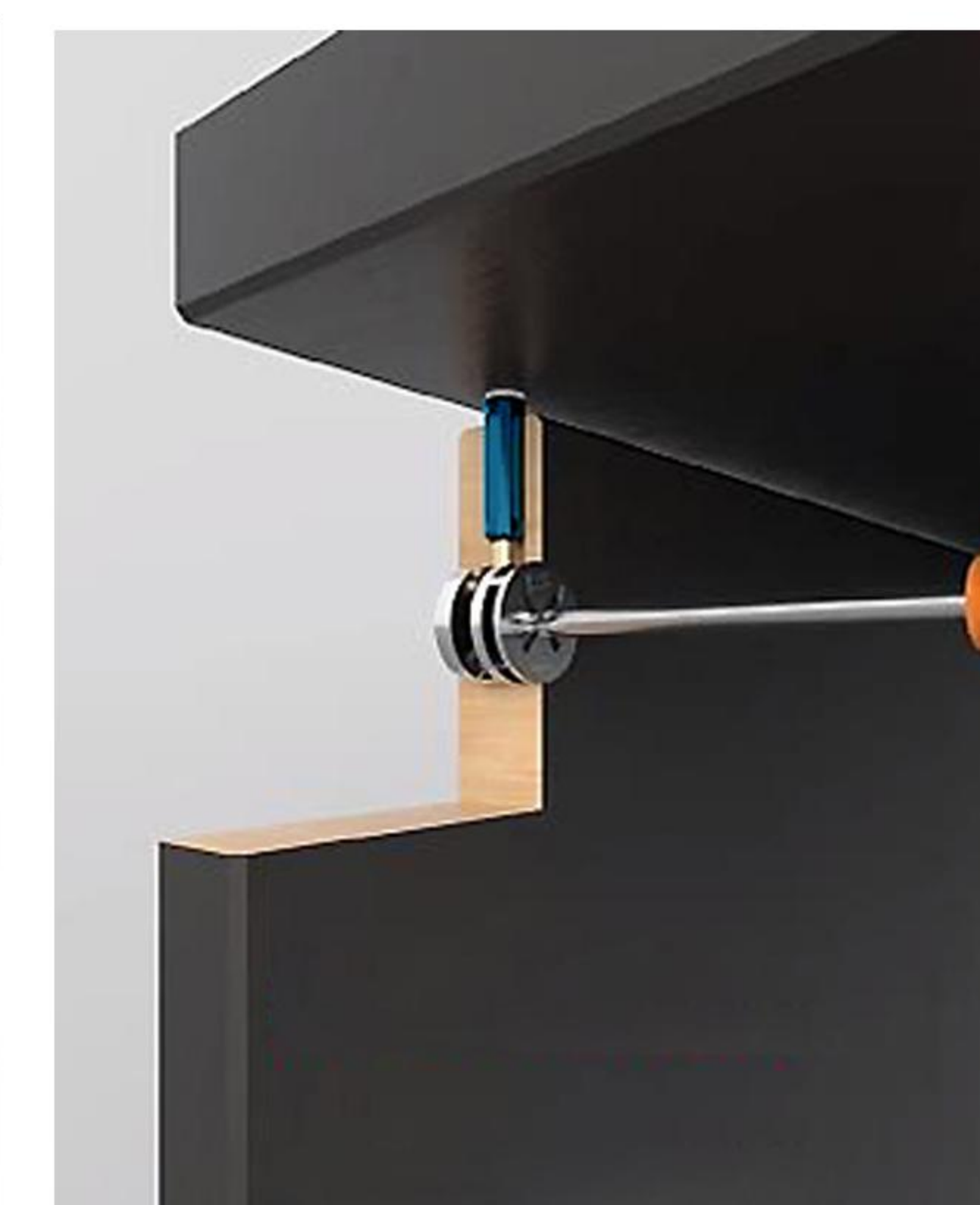
2. Install the link rod



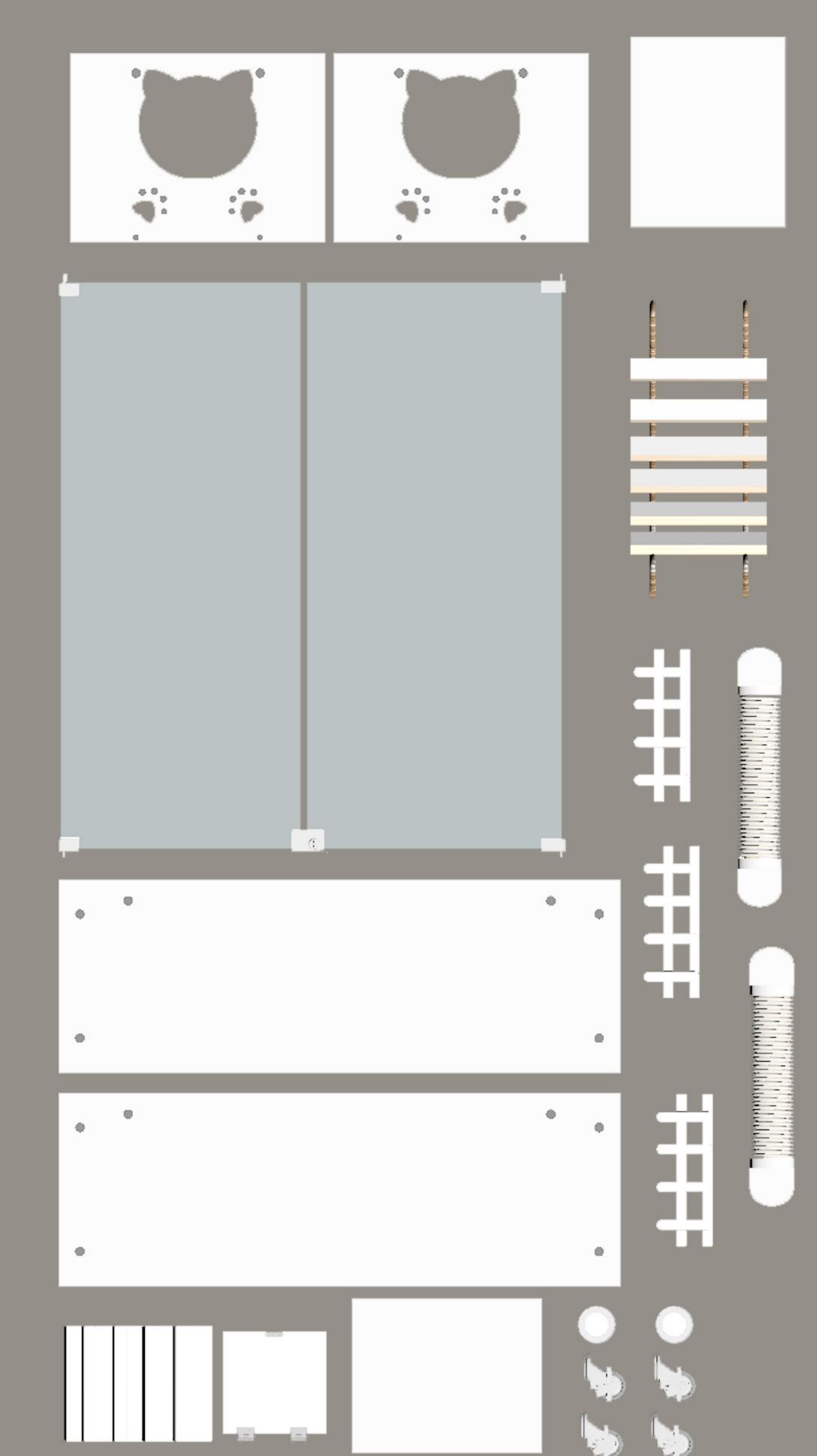
3. The effect after installation is shown in the figure



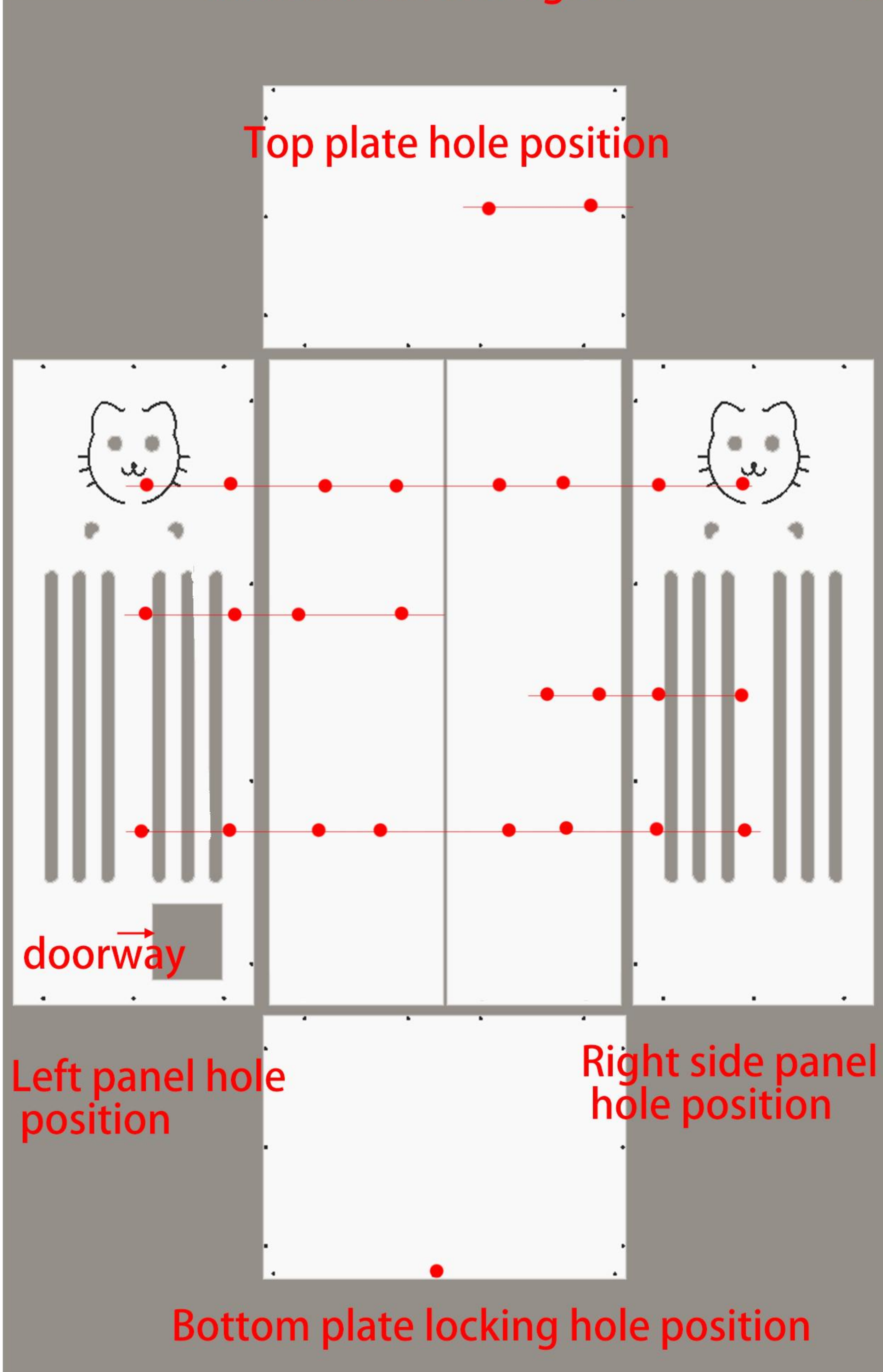
4. Install the eccentric wheel



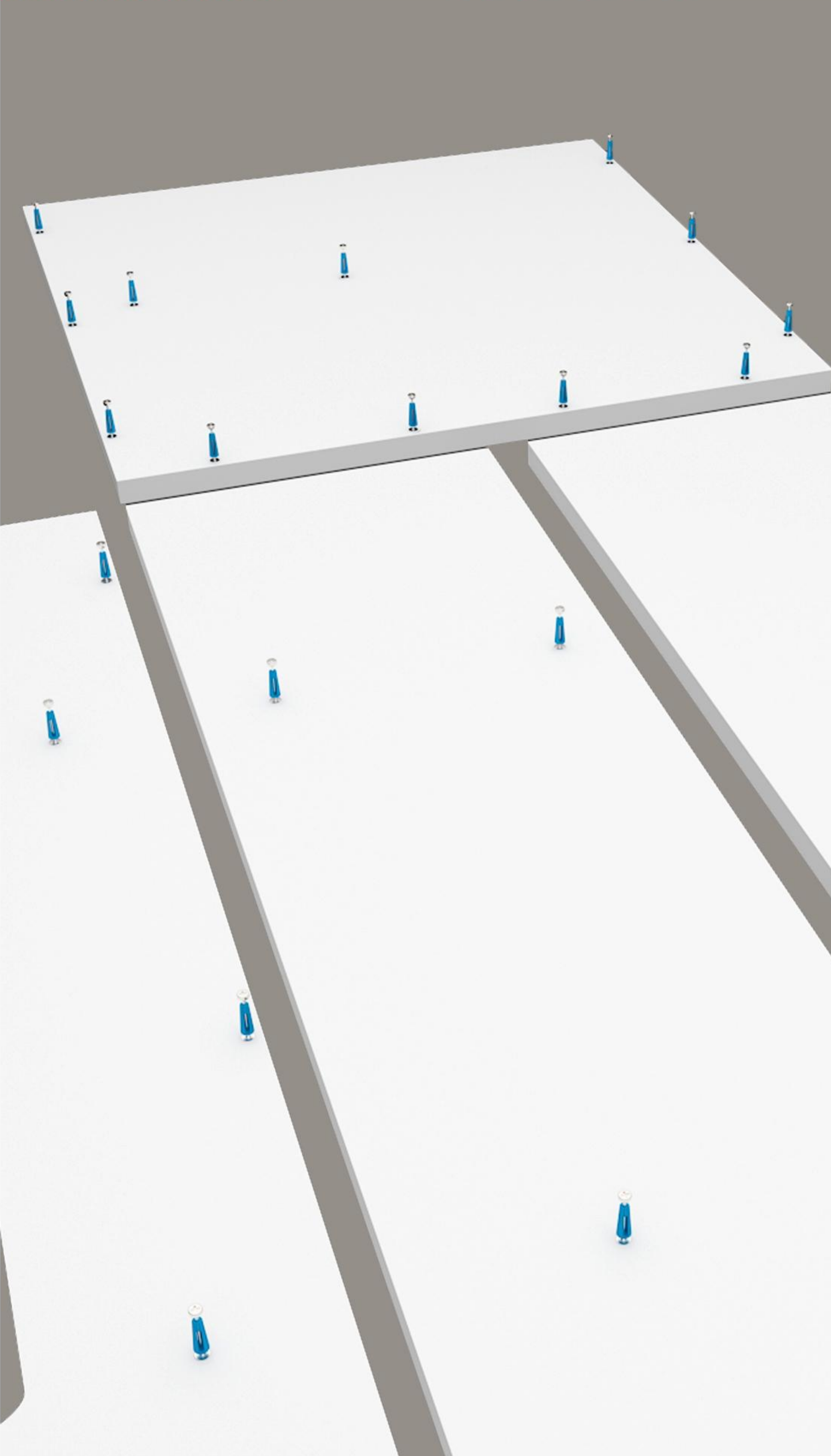
5. Tighten with a screwdriver



1. Check if the item is complete

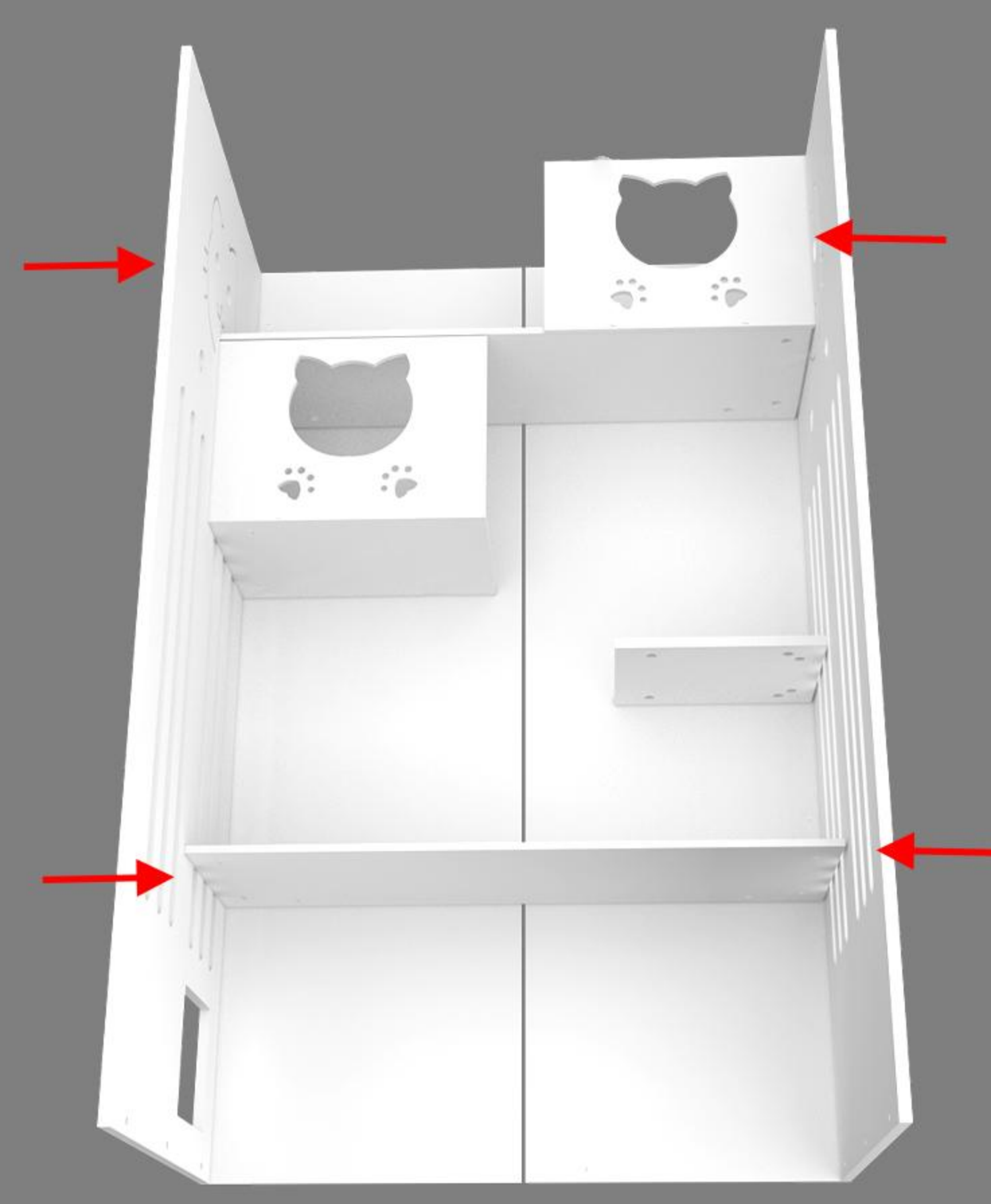
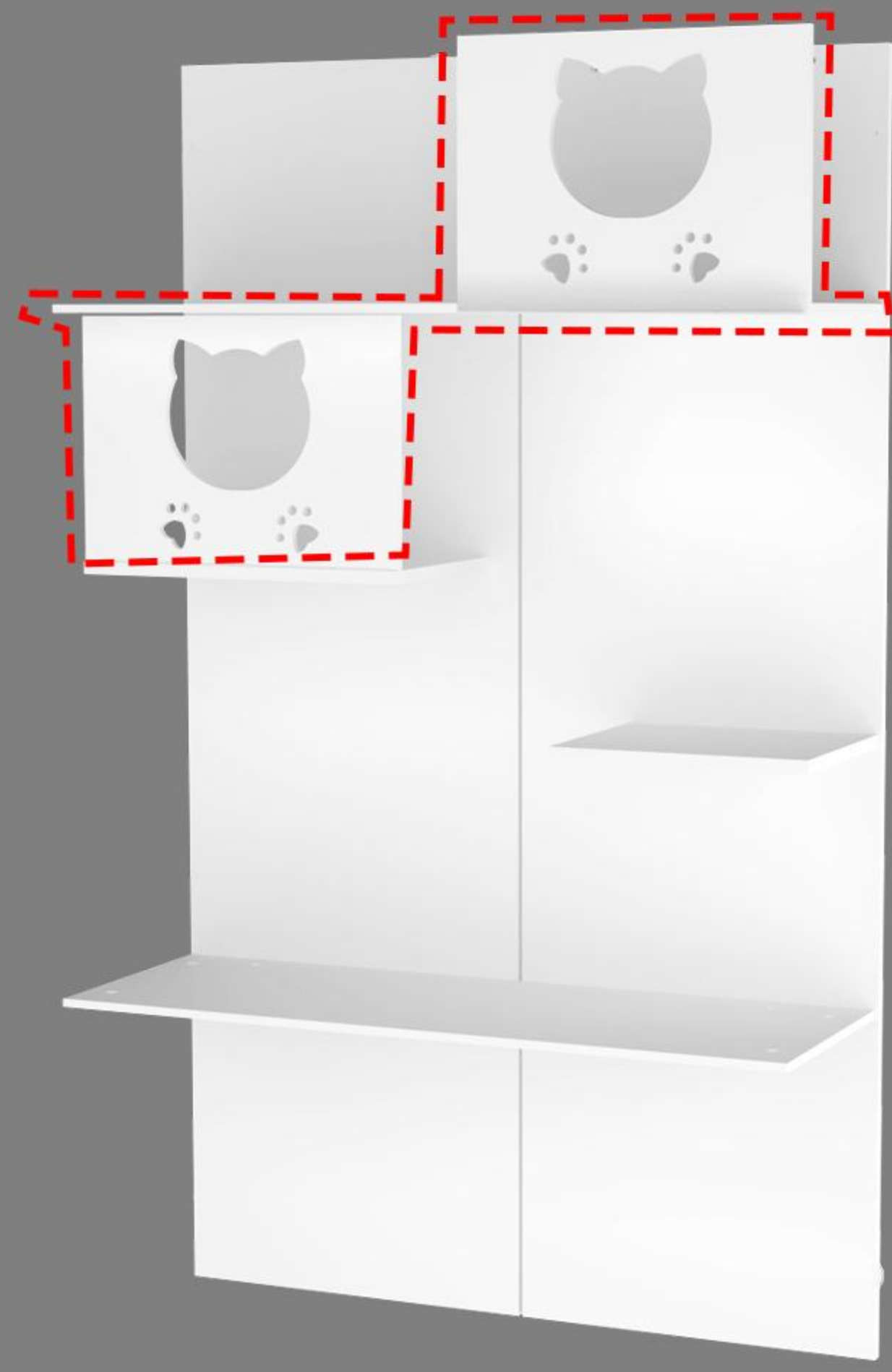
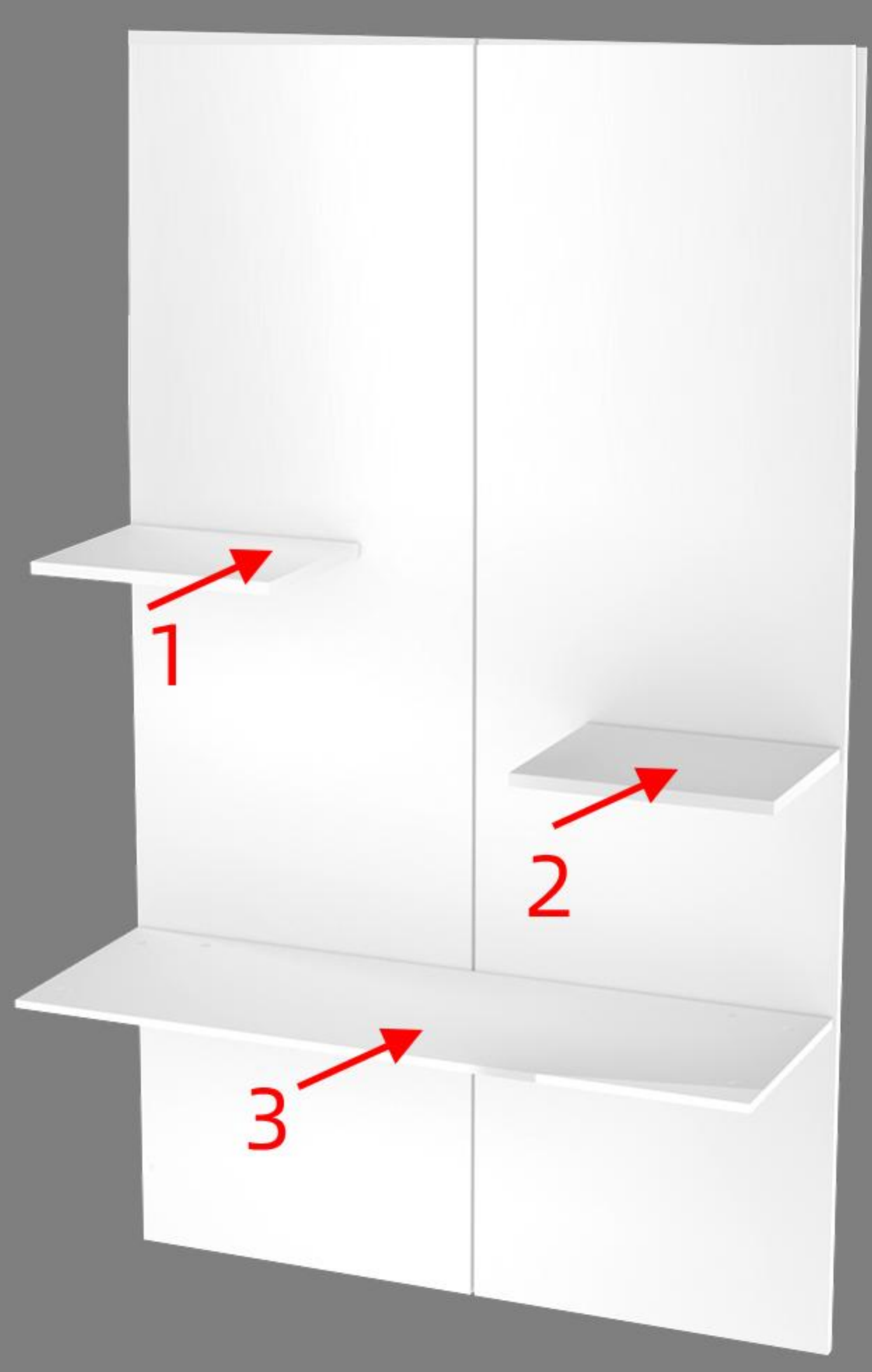


2. Place the holes as shown in the drawings



3. Fix the screw first according to the installation method of the three in one screw



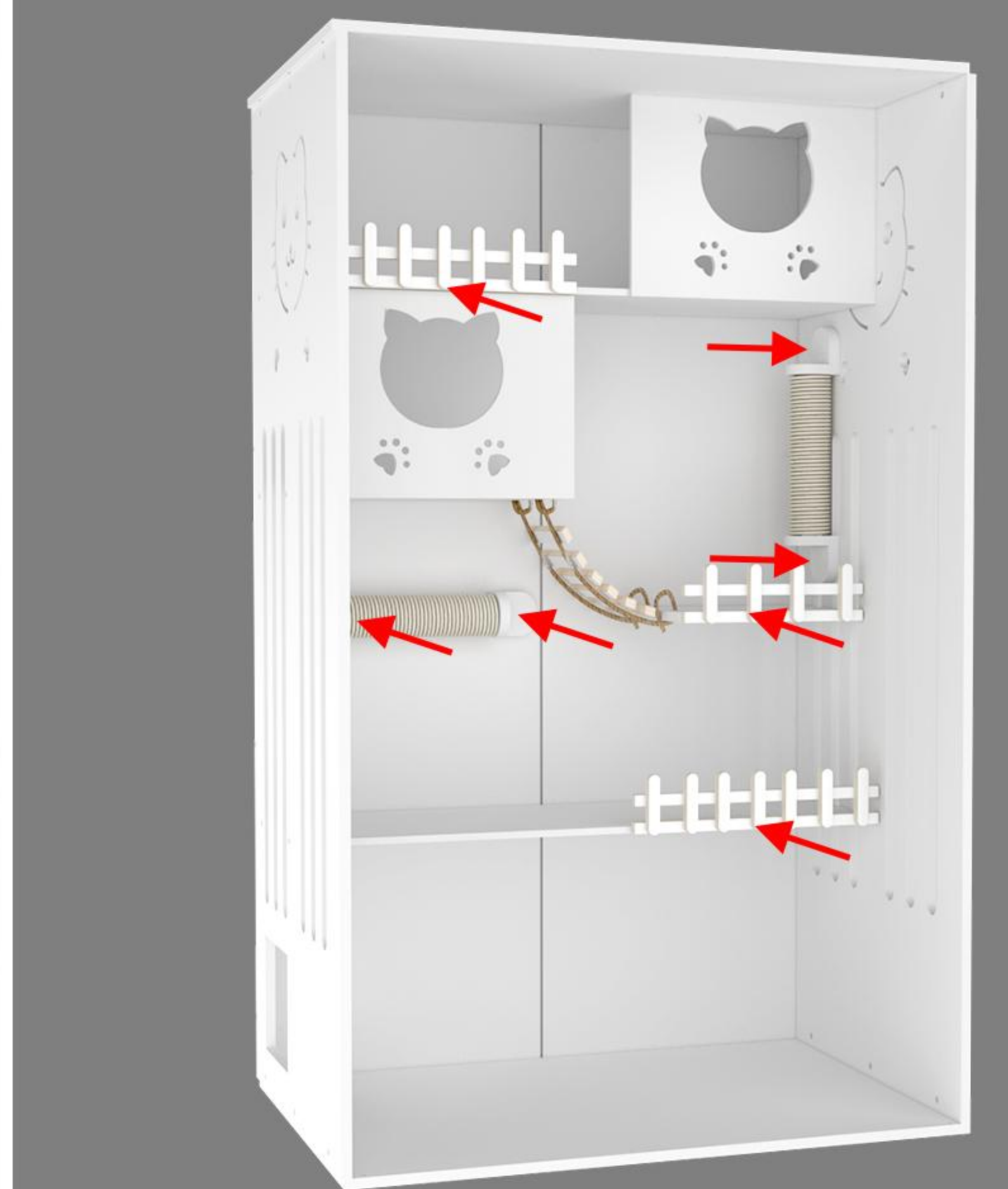
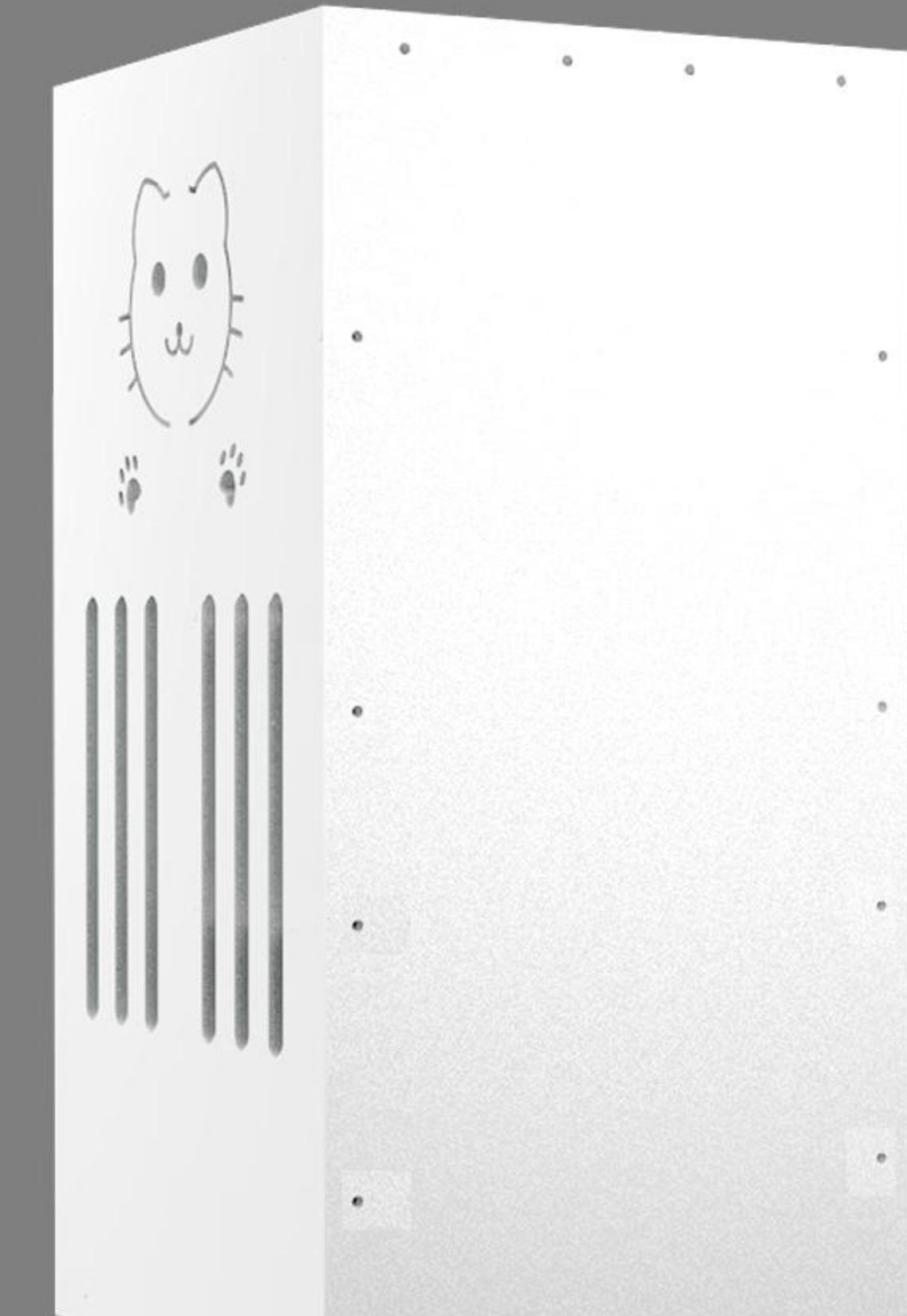
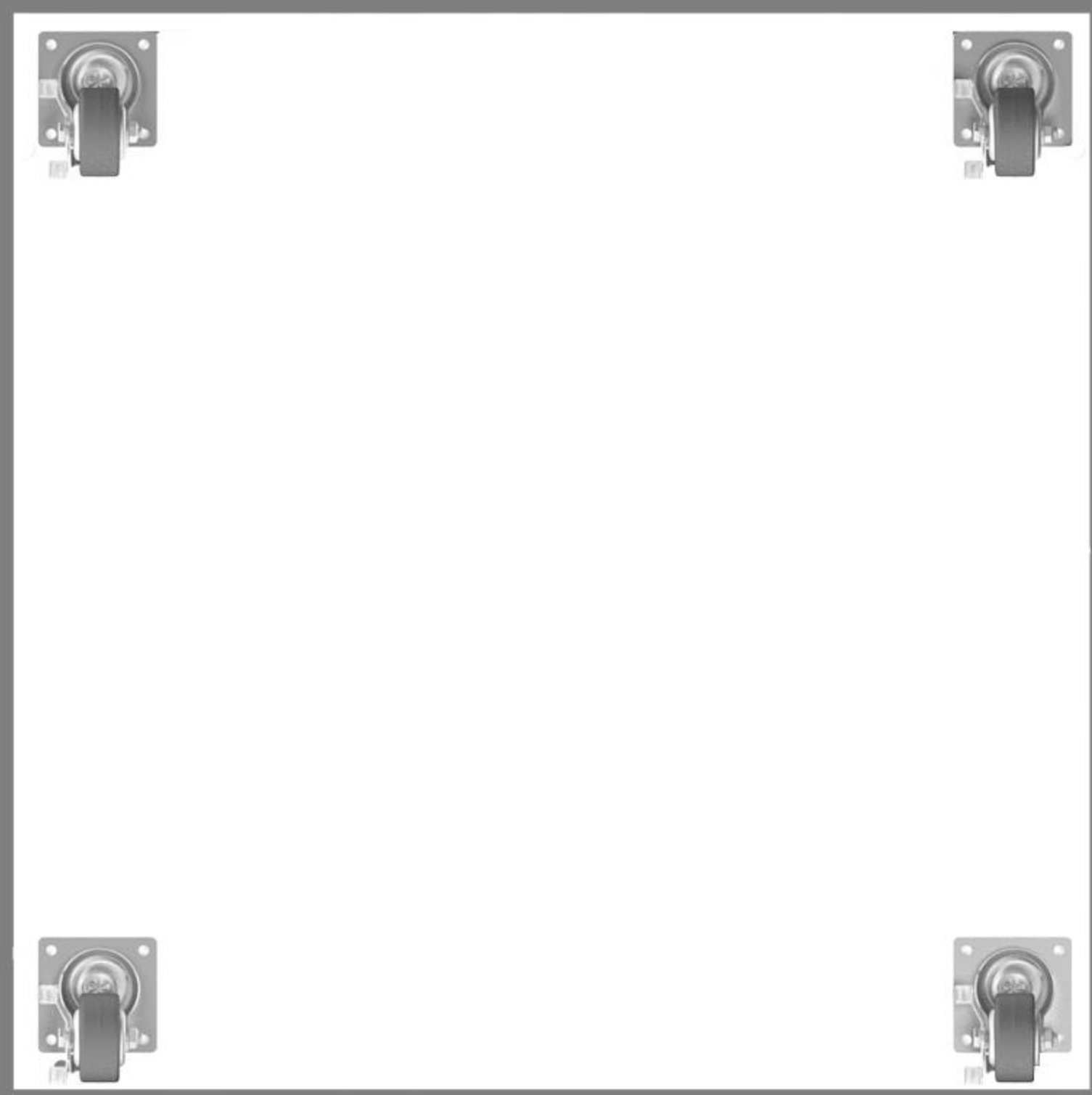


4. Place the back plate flat and locate the inner 123 plate. Insert it into the hole and fix it with an eccentric wheel

5. Insert the engraving plate into the hole as shown in the figure and install it with an eccentric wheel

6. When installing the side panel, pay attention to the hole insertion and the eccentric wheel gu

7. Install the top and bottom plates according to the hole positions

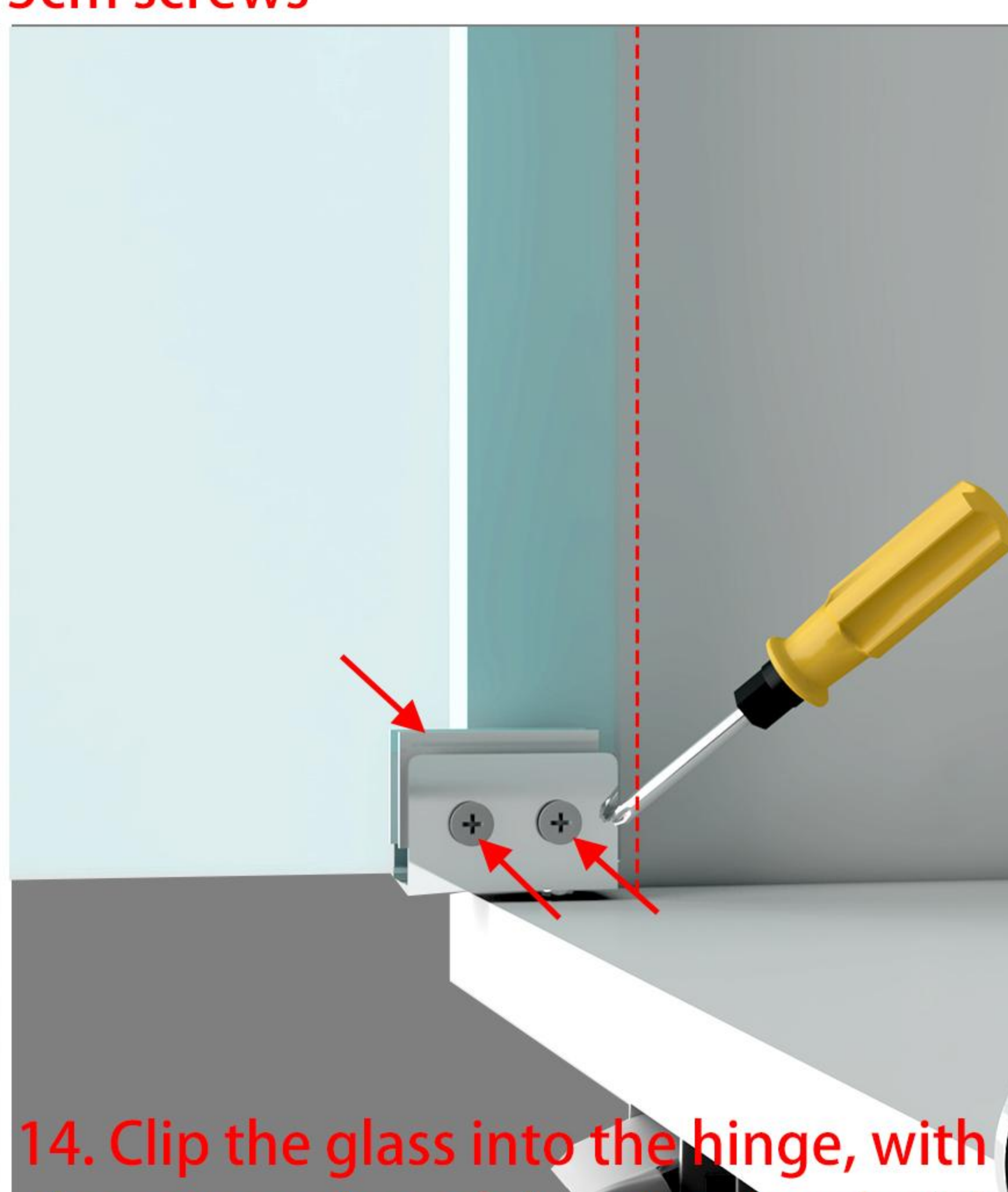
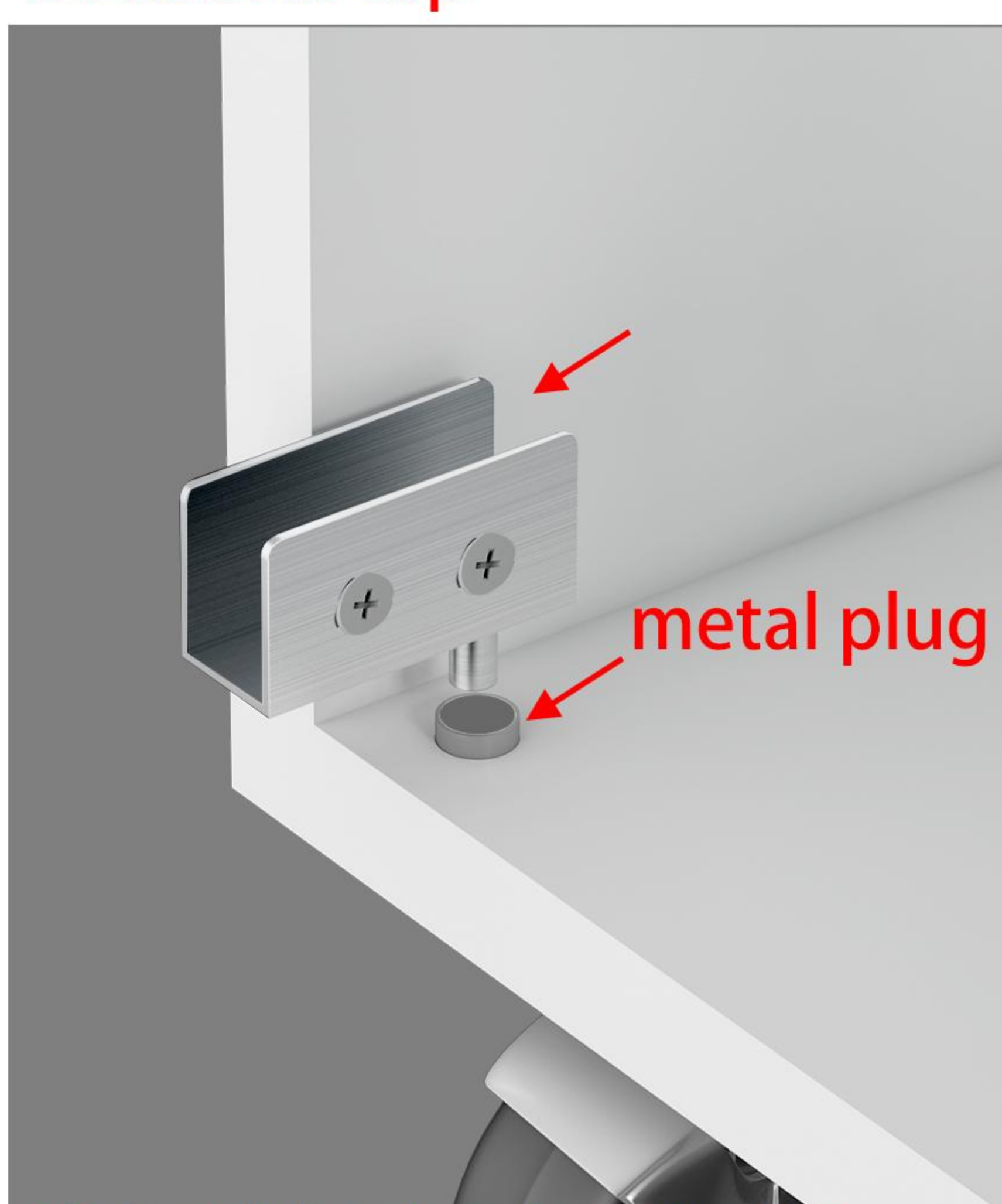
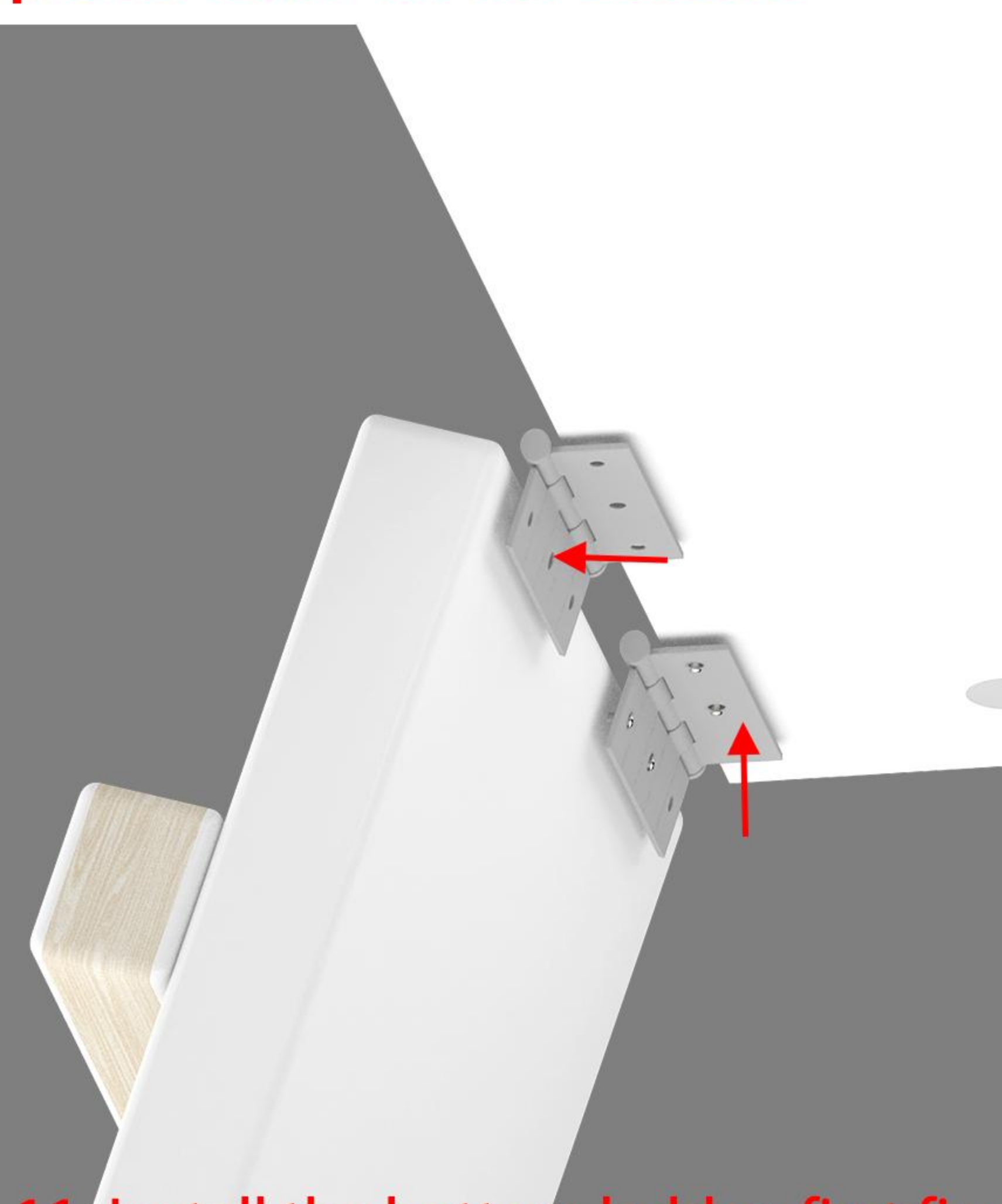


8. Install the wheel and fix the universal wheel to the base plate with 1.5cm screws

9. After the wheel installation is completed, stand up the cabinet, tighten the eccentric wheel behind the back plate, and fix the side plate to the back plate

Thread the suspension bridge rope through the hole from bottom to top

11. Install the cat grab post and fence, as shown in the figure, and fix them to the corresponding positions with 3cm screws

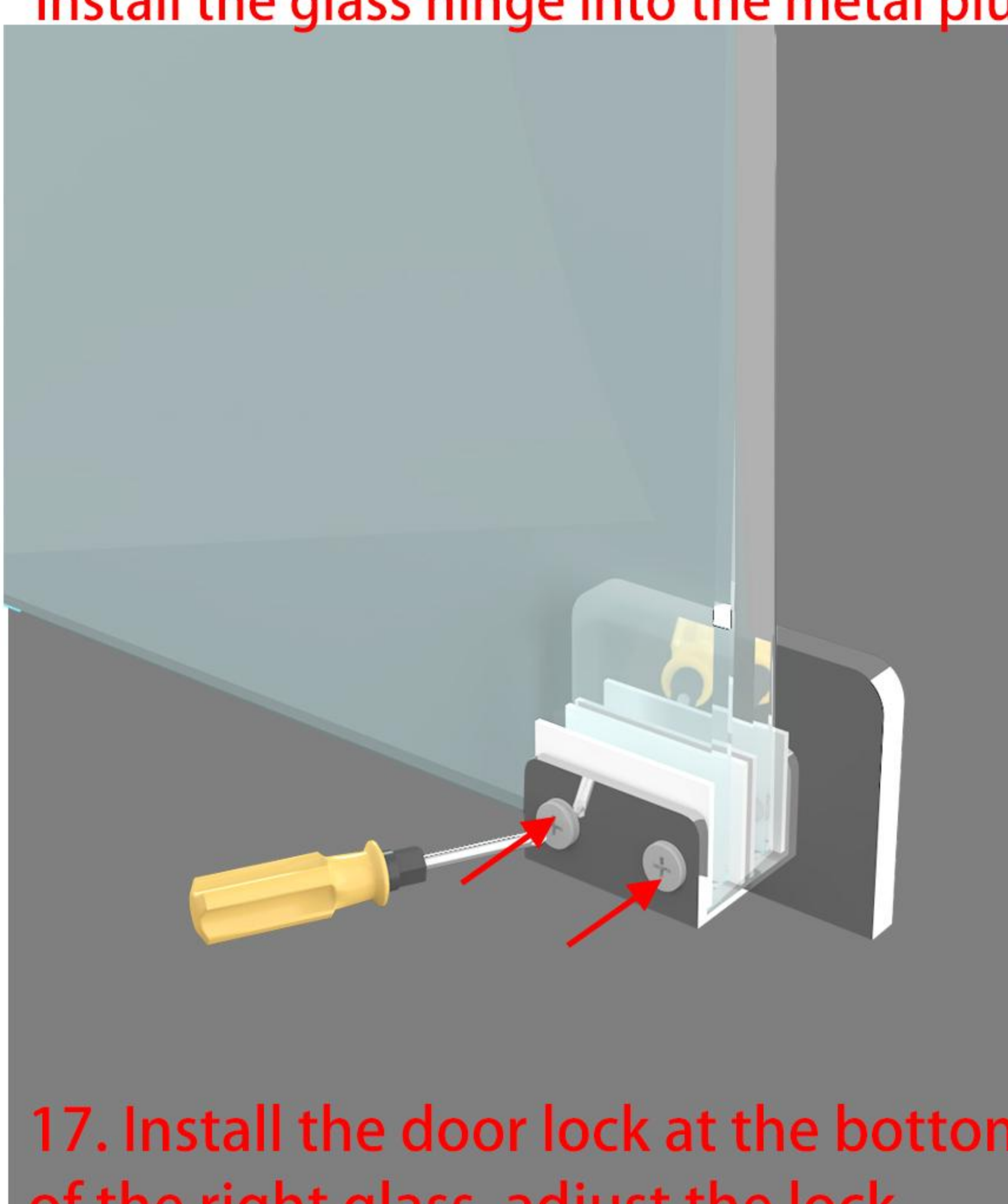
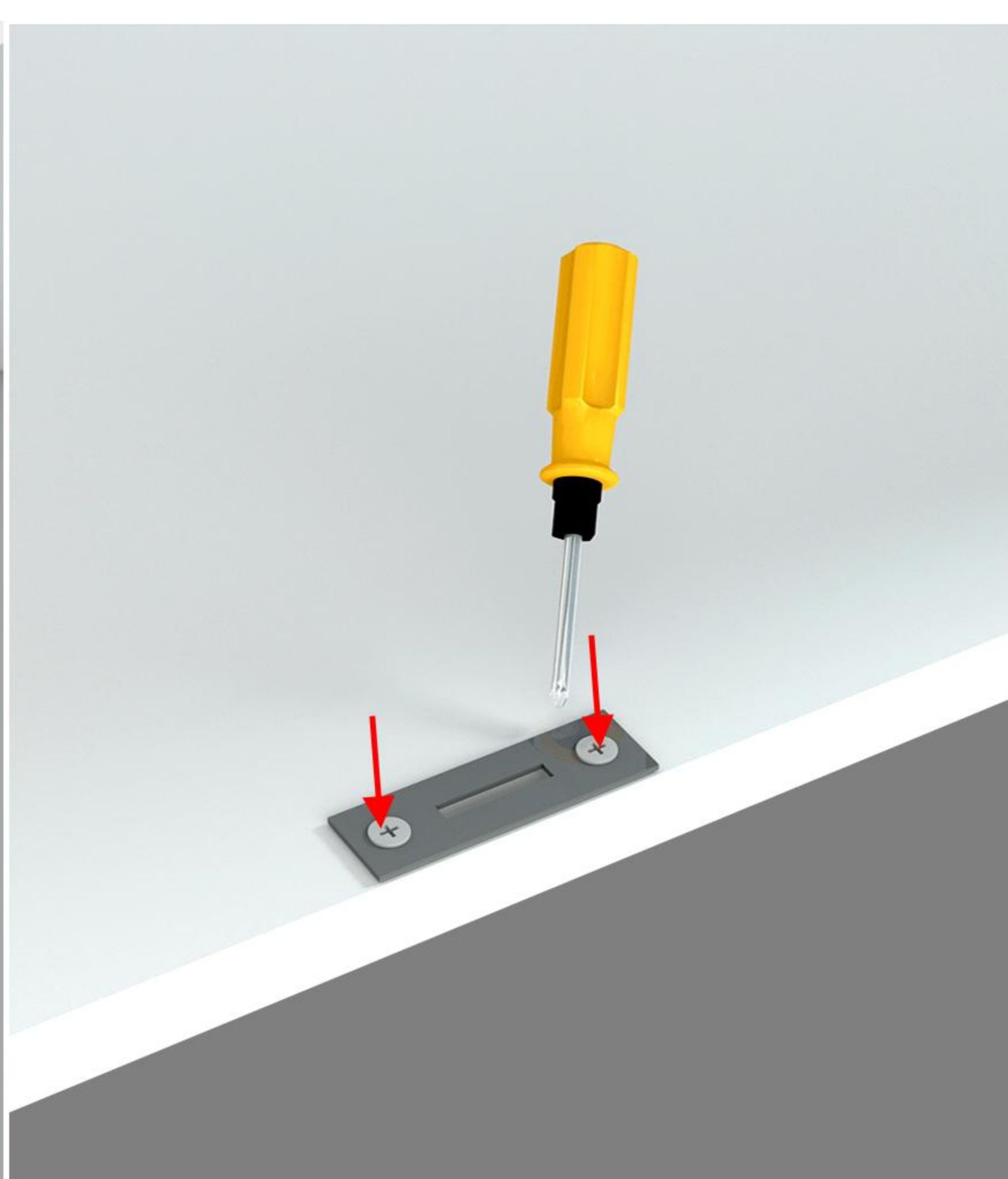
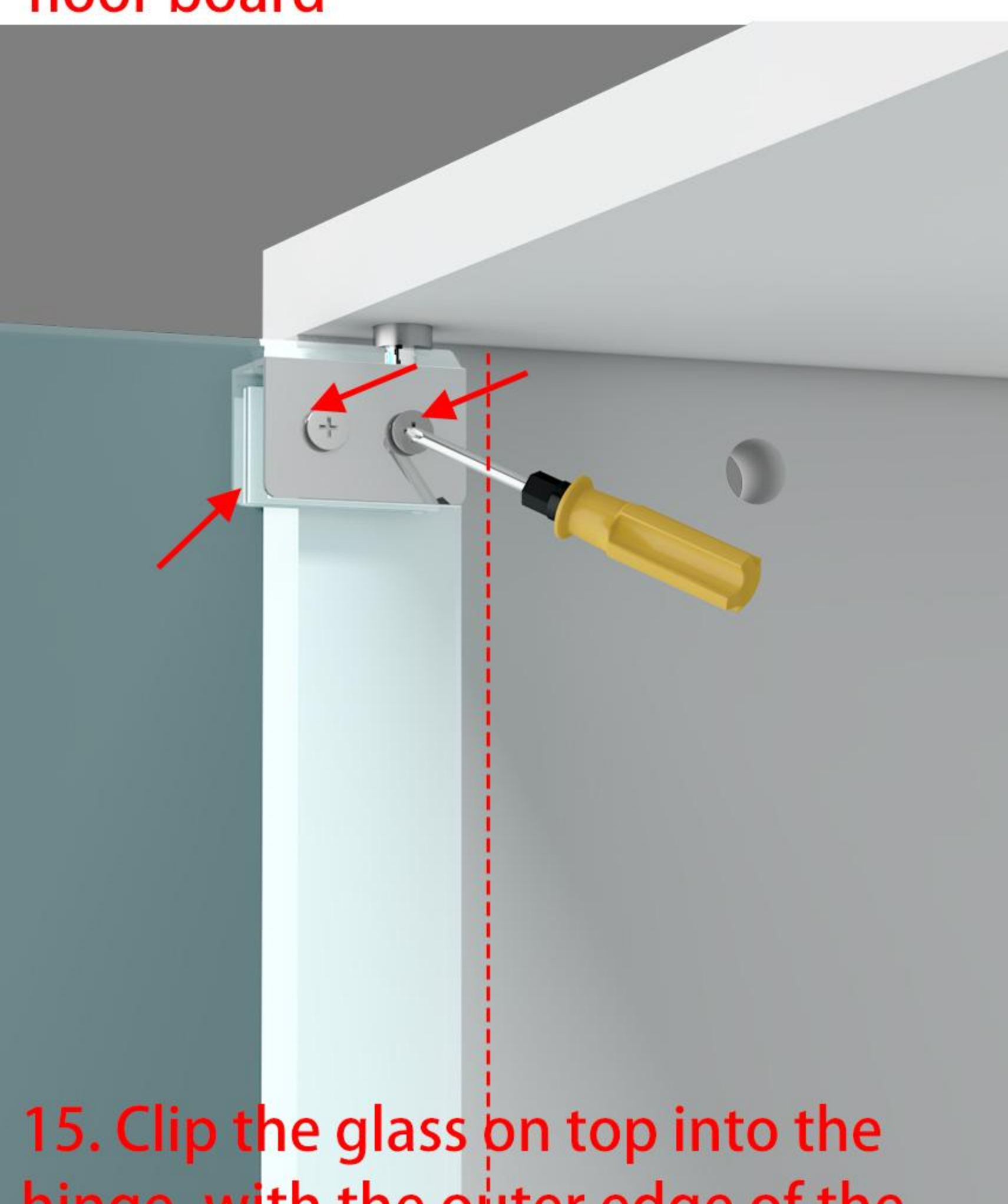


11. Install the bottom ladder, first fix the hinge with 1.5cm screws and the ladder, and then fix the ladder on the floor board

12: Install the access door and link it with a 1.5cm screw

13. Install the glass door. The first step is to install the metal plug onto the bottom plate hole, and then install the glass hinge into the metal plug with a screwdriver

14. Clip the glass into the hinge, with the outer edge of the glass level with the outer edge of the hinge. Note: Place shims on both sides and tighten with a screwdriver



15. Clip the glass on top into the hinge, with the outer edge of the glass level with the outer edge of the hinge. Place shims on both sides and tighten with a screwdriver

16. Install the locking iron plate, align it with the hole position, and fix it with the shortest screw

17. Install the door lock at the bottom of the right glass, adjust the lock tongue and place a gasket on the corresponding lock hole, and tighten it with a screwdriver

18. Install the door stopper, first close the right glass door, determine the position of the door stopper, and fix it on the top plate with 3CM screws