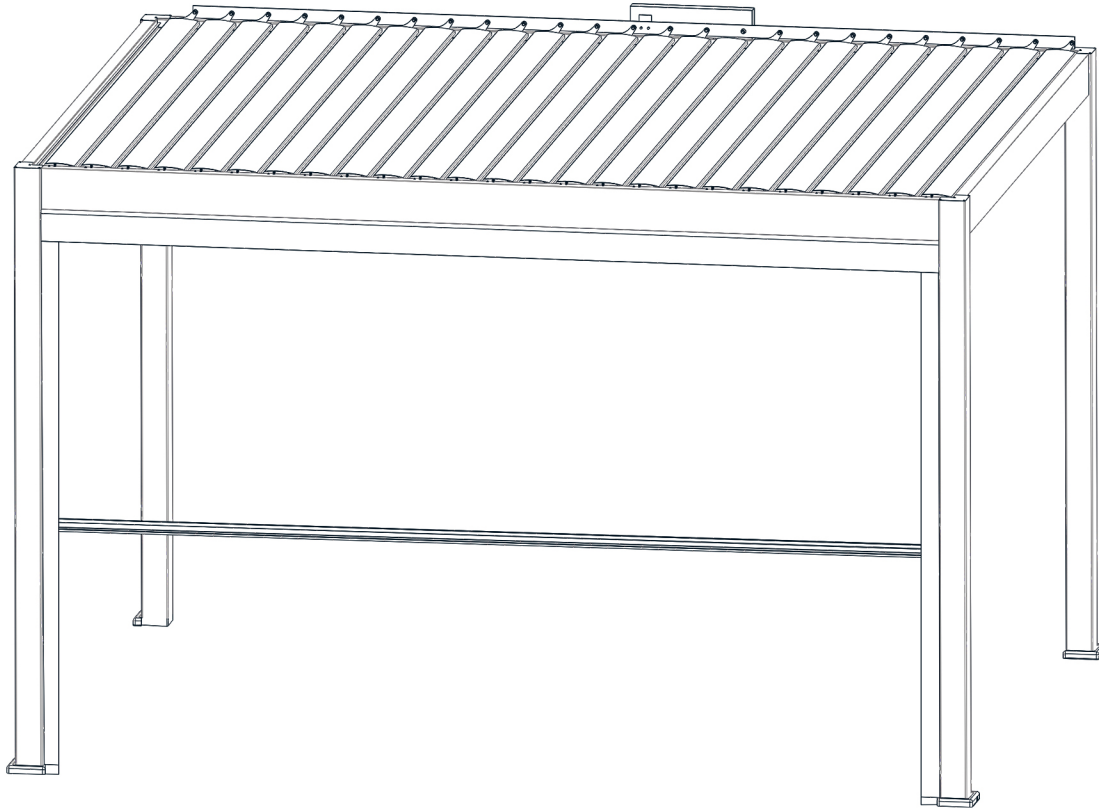




LIVING CULTURE

# Manual Control Zip Screen

Installation instructions



## Attention

### NOTE:

If the pergola has Base plate covers there need to be removed to allow installation of the zip screen/blind

## Prepare tools before installation



Spirit level/Bubble level



Hand electric drill



Rubber hammer



Tape measure



Phillips screwdriver  
Slotted screwdriver




Screw pack

## Installation instructions

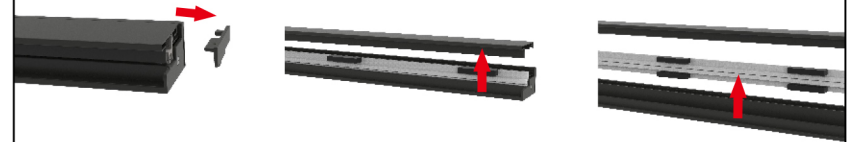
1



 Screw pack (2.5cm screw: 12pcs)

Open the package and check whether the items are in good condition

2



a. Remove the side rail cover

b. Split the side rails

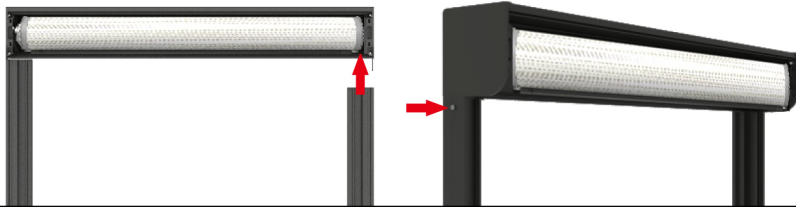
c. Remove the plastic fabric/Blind guide channel

## Installation instructions

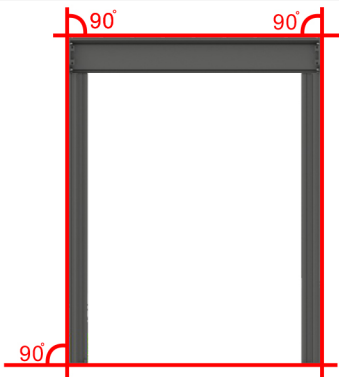
3

a. Connect the left and right side rails with the rear cover

b. Lock the screws



4



Use level and tape measure to align the frame

5

a. Install in the Pergola frame

Side mounting screw fixing



6

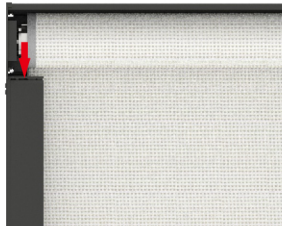


a. Insert the fabric obliquely into the guiding channel to connect the Blind

b. When installing the side rail cover plate, knock it firmly with a rubber hammer



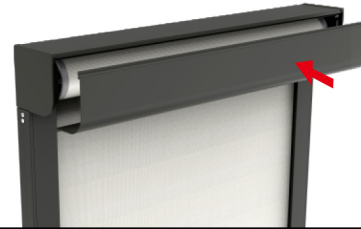
Note: if you need to pry it again, use a slotted screwdriver to pry it from this position



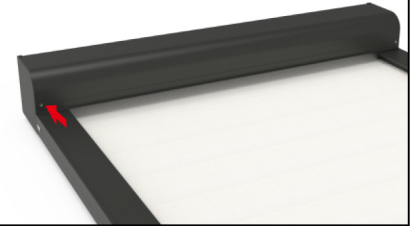
c. Install the upper cover of the side rail

7

a. Install the front cover case



b. Lock the screw



**The installation is completed**