

FUJIFILM
Value from Innovation

SonoSite X-Porte

ONE LOOK AND
THE DIFFERENCE
IS CLEAR.

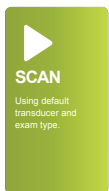




X-Porte represents an entirely new approach to clinical ultrasound. Its imaging, features and educational resources are fluidly brought together in a convenient, all-in-one kiosk design.

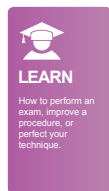
At the sweep of your hand, it responds so quickly and intelligently to your imaging needs, you'll know it was created precisely for professionals like you. Its self-explanatory control panel makes system navigation a breeze, and its sealed touch screen has no buttons for pathogens to hide behind.

X-Porte's slender profile makes it easy to maneuver alongside beds and exam tables for point-of-care visualization and procedures. For portability and durability during transport, its screen folds down and its stand lowers making X-Porte even more compact for navigating busy corridors. The X-Porte ultrasound core can be detached easily from the kiosk to provide another configuration option. For servicing, nothing could be more convenient than X-Porte's five-year warranty and removable engine.



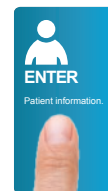
Breakthrough extreme definition imaging

X-Porte imaging technology was created to meet the challenge of side-lobe artifacts, so now you can scan with image clarity, resolution, and color sensitivity never before seen in point-of-care ultrasound systems.



Real-Time Scan Along Learning

For instant reference, scan along with an onboard library of visual guides featuring step-by-step learning tutorials. Use X-Porte's Visual Guides for comparing 3D beam-direction animations to corresponding 2D ultrasound images.



Gesture-Driven Interface

Optimized workflow is always at your fingertips. Easily customize the interface to suit your needs. Don't like the order of menu items? Change them. Too many controls? Minimize them.

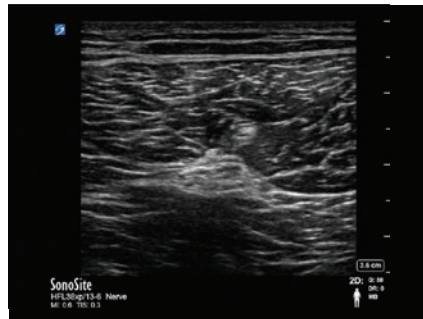


THE WORLD'S FIRST ULTRASOUND KIOSK.

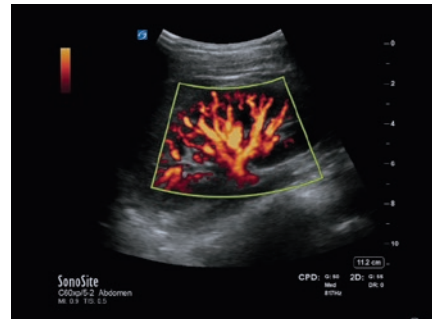
One look and the difference is clear—extreme definition imaging technology drives X-Porte's image clarity and resolution by significantly reducing visual clutter.



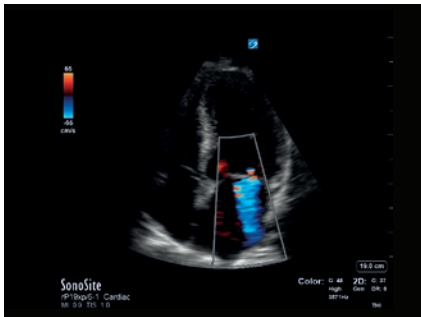
Gallbladder



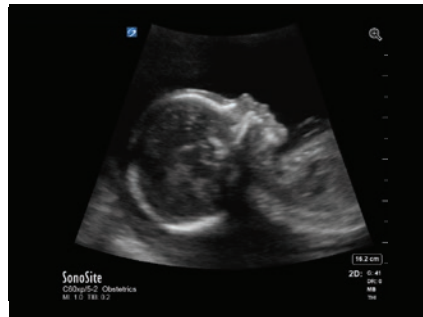
Sciatic Nerve



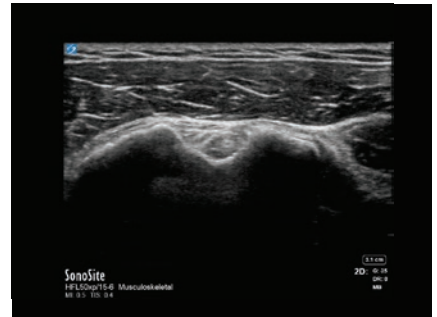
Kidney Blood Flow



Apical Mitral Flow



Fetal Profile



Biceps Tendon

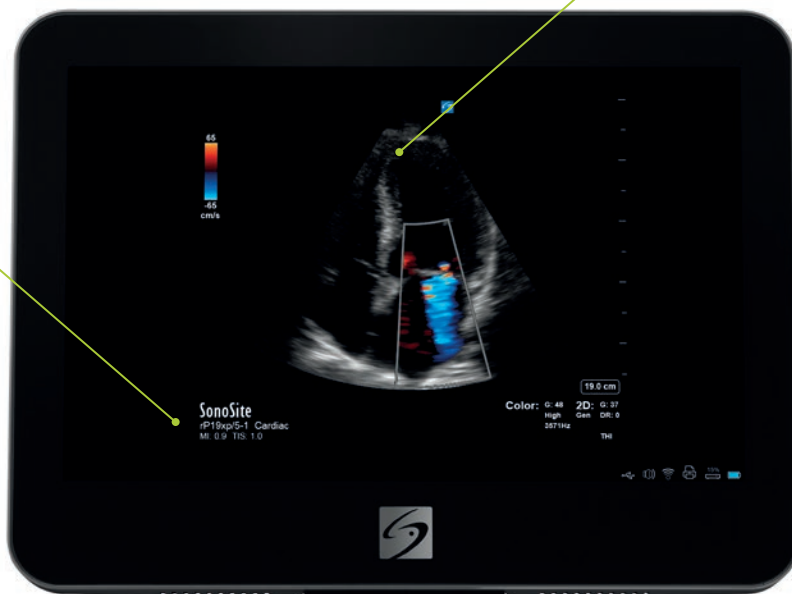


SonoSite X-Porte

SONOSITE X-PORTE MAIN FEATURES AT A GLANCE.

Designed for easy cleaning, the sealed touchscreen has no buttons or levers for pathogens to hide behind

Extreme definition imaging substantially reduces visual clutter while significantly enhancing clarity



Customizable to suit your needs, workflow optimization is at your fingertips with the intuitive gesture-driven interface

During live scanning, simultaneously access the onboard library of education videos for real-time learning



SONOSITE X-PORTE TRANSDUCERS



C11xp

8-5 MHz Curved

Exam Types:

Abdominal, Arterial, Neonatal, Nerve, Venous

Scan depth: 15 cm



C35xp

8-3 MHz Curved

Exam Types:

Abdominal, MSK, Nerve

Scan depth: 16 cm



C60xp

5-2 MHz Curved

Exam Types:

Abdominal, Gynecology, MSK, Nerve, Obstetrics

Scan depth: 30 cm



ICTxp

9-5 MHz Curved

Exam Types:

Gynecology, Obstetrics

Scan depth: 15 cm



HFL38xp

13-6 MHz Linear

Exam Types:

Arterial, Breast, Lung, MSK, Nerve, Small Parts, Venous

Scan depth: 6 cm



HFL50xp

15-6 MHz Linear

Exam Types:

Breast, MSK, Nerve, Small Parts

Scan depth: 6 cm



HSL25xp

13-6 MHz Linear

Exam Types:

Arterial, Lung, MSK, Nerve, Ophthalmic, Superficial, Venous

Scan depth: 6 cm



L25xp

13-6 MHz Linear

Exam Types:

Arterial, Lung, MSK, Nerve, Ophthalmic, Superficial, Venous

Scan depth: 6 cm



L38xp

10-5 MHz Linear

Exam Types:

Arterial, Lung, Nerve, Small Parts, Venous

Scan depth: 9 cm



P10xp

8-4 MHz Phased

Exam Types:

Abdominal, Cardiac, Neonatal

Scan depth: 15 cm



rP19xp

5-1 MHz Phased

Exam Types:

Abdomen, Cardiac, Lung, Obstetrics, Orbital, Transcranial

Scan depth: 35 cm



TEExp

8-3 MHz Phased

Exam Types:

Cardiac

Scan depth: 18 cm



D2xp

2MHz Pencil

Exam Types:

Cardiac

Scan depth: N/A



Needle guides and kits available with the following transducers:
C35xp, C60xp, HFL38xp, HFL50xp, ICTxp, L25xp, L38xp, P10xp and rP19xp.

A transverse needle guide is available with the L25xp.

Designed from the ground up for your work style and work environment, X-Porte offers you an entirely new ultrasound experience by providing these revolutionary tools in a unique, integrated system exclusive to SonoSite.

SYSTEM SPECIFICATIONS

Stand Dimensions: 26.4" L x 21.2" W
Stand Height (max): 65" (monitor up)
Stand Height (min): 42.2" (monitor down)
Height Adjustment: 9" travel
HD Monitor: 19" diagonally (minimum)
Control Panel: 12.1" capacitive touchscreen
System Controls: Multi-touch gestures
Tilt Adjustment: 0 to 110 degrees
Clinical Monitor Viewing: 85 degrees left and right, 85 degrees up, 85 degrees down
Architecture: All digital broadband
Dynamic Range: Up to 183 dB
Gray Scale: 256 shades
HIPAA Compliance: Comprehensive toolset

IMAGE MODES

2D Broadband Imaging
 Tissue Harmonic Imaging
 Pulse Inversion Harmonic Imaging
 M-Mode
 Velocity Color Doppler
 Color Power Doppler
 Pulsed Wave Doppler (update and simultaneous)
 Pulsed Wave Tissue Doppler
 Continuous Wave Doppler, ECG

IMAGE PROCESSING

Extreme definition imaging technology
 SonoAdapt Tissue Optimization
 SonoHD2 Imaging Technology
 SonoMB Multibeam Technology
 Dual Imaging
 Dual Color Imaging
 AutoGain and AutoGain Brightness Adjust
 Restore Default Gains
 Dynamic Range
 Duplex Imaging
 8x Zoom Capability
 Cine Processing: Dynamic Range, Zoom
 2D Image Optimization: Res, Gen, Pen
 Overall Gain, Near and Far Field Gain Control

Color and Doppler Flow Optimization (low, medium, high)
 Color Variance Mode
 2D Reduced Imaging Sector (steerable)

STEEP NEEDLE PROFILING

(Available on these transducers and exams)
C35xp: MSK, Nerve
C60xp: MSK, Nerve
HFL38xp: Arterial, Breast, MSK, Nerve, Small Parts, Venous
HFL50xp: Breast, MSK, Nerve, Small Parts
HSL25xp: Arterial, MSK, Nerve, Venous
L25xp: Arterial, Nerve, MSK, Venous
L38xp: Arterial, Nerve, Small Parts, Venous

POWER SUPPLY

System operates via battery or AC power
 Rechargeable Lithium-ion Battery
 Battery Life: 1.0 hour, 3 days on idle
 Battery charges to 80% capacity in 3 hours

OTHER HIGHLIGHTS

Programmable Controls
Labeling: Predefined Labels, Customized Labels, Predefined Pictograms
Worksheets: Editable Acute Care Worksheets (ACEP Guidelines), Musculoskeletal Worksheets and customizable worksheets
 Steep Needle Profiling Software
 Embedded DVR (digital video recorder)*
 Triple Transducer Connect*
 Storage Basket*
 Digital and VGA Video Out*
 Auxiliary Transducer Holder*
 AC Cord Retainer*

*Standard with X-Porte

ONBOARD IMAGE AND CLIP

STORAGE REVIEW
 2D Cine Review: 20 seconds
 PW, CW, M-Mode Cine Review: 16 seconds
 Internal Flash Memory: 64 GB
 Thumbnail review of saved images and clips

Prospective and Retrospective Clip Store
 Auto Clip Export (auto export to USB at end of study)
 Video clip playback at 1, ½ or ¼ of the captured rate
 Video Clip Save Lengths: 2, 4, 6, 10, 15, 30 and 60 seconds
 Measure and calculate on recall
 Annotations on recalled images
 Image Format: JPEG, AVI, BMP
 Export Format: HTML
 JPEG Compression Options: High, Medium, Low

DATA MANAGEMENT AND CONNECTIVITY

5 USB 2.0 Ports
 Ethernet Port
 DVR USB Port
 ECG Connector
 Bar Code Auto-query (populates patient's demographic from worklist)
 DICOM Image Management: Print, Store, Modality Worklist, Perform Procedure Step (PPS), Storage Commitment
 Exam Routing: Diagnostic, Procedure, Education Exams
 2.4 GHz and 5 GHz Wireless: 802.11 (B, G and N networking)
 SonoSite Patient Data Archival Software (PDAS) for Wireless/Wired image management
 Telexy Qpath™ E exam management compatibility with remote worksheets

ACCESSORIES

Medical Grade Black and White Printer
 USB Bar Code Reader
 Footswitch
 ECG Module
 ECG Slave Cable

SUPPORTED LANGUAGES

English, French, Italian, Portuguese, Spanish, German

ONBOARD GUIDES

Ultrasound Imaging Basics, Packages for Acute Care, MSK, Procedures, Anesthesiology
 Onboard System Help

Note: Desktop configuration available.



FUJIFILM SonoSite, Inc.
 Worldwide Headquarters
 21919 30th Drive SE, Bothell, WA 98021-3904
 Tel: +1 (425) 951-1200 or +1 (877) 657-8050
 Fax: +1 (425) 951-6800
www.sonosite.com/products/sonosite-x-porte

SonoSite Worldwide Offices
 FUJIFILM SonoSite Australasia Pty Ltd: Australia 1300-663-516
 FUJIFILM SonoSite Australasia Pty Ltd: New Zealand 0800-888-204
 FUJIFILM SonoSite Brazil +55 11-5574-7747
 FUJIFILM SonoSite Canada Inc. +1 888-554-5502
 FUJIFILM (China) Investment Co., Ltd. +86 21-5010-6000
 FUJIFILM SonoSite GmbH – Germany +49 69-80-88-40-30
 FUJIFILM SonoSite, Inc. – USA +1 425-951-1200

FUJIFILM SonoSite India Pvt Ltd. +91 124-288-1100
 FUJIFILM SonoSite Italy S.r.l. +39 02-9475-3655
 FUJIFILM SonoSite Iberica SL – Spain +34 91-123-84-51
 FUJIFILM SonoSite Japan K.K. +81 3-0418-7190
 FUJIFILM SonoSite Korea Ltd +65 6380-5589
 FUJIFILM SonoSite Ltd – United Kingdom +44 1462-341151
 FUJIFILM SonoSite SARL – France +33 1-82-88-07-02

SONOSITE, the SONOSITE logo and X-PORTE are trademarks and registered trademarks of FUJIFILM SonoSite, Inc. in various jurisdictions.

FUJIFILM is a trademark and registered trademark of FUJIFILM Corporation in various jurisdictions.

All other trademarks are the property of their respective owners.

Copyright © 2018 FUJIFILM SonoSite, Inc. All rights reserved. Subject to change.

MKT02538 Rev. K 01/2018