

Nanjing Perlove Medical Equipment Co., Ltd

Add: No.97, Wangxi Road, Jiangning District, Nanjing 211122

Tel: +86-25-87187780 +86-25-68571666-9350 9353

Fax: +86-25-87187780

Http://www.perlove.com.cn

E-mail: overseas@perlove.com.cn



OUR UPCOMING EXHIBITIONS:

You can see more details on our website
Http://www.perlove.com.cn



PERLOVE MEDICAL

For Overseas Market: Nanjing Perlove Medical Equipment Co.,Ltd.

For Domestic Market: Nanjing Perlove Medical Equipment Co.,Ltd.

Beijing Per-Builders Science and Technology Co.,Ltd.

Zhuhai Perlead Medical Equipment Co.,Ltd.

PLX5200 (Mobile Digital Radiography)
High Frequency Mobile Digital Radiography System

Version 1.0 Year 2017

Http://www.perlove.com.cn



Light and flexible collect sharp image.

Widely used in radiology, ward, ICU, operating room

Core Strengths

- Compact frame, flexible movement
- Digital image, sharp and delicate
- Super capacitor, environmental protection
- electric power-assisted, Strong endurance
- Graphical interface, easy operation
- Ultrasonic ranging, digital display



High definition image, easy to clinical diagnosis

High quality portable FPD, outstanding acquisition conversion performance, the sharp clinical image can be guaranteed. It can realize digital radiography of all human body parts friendly, like head, limbs, chest, spine lumbar and so on.



frontal lumbar spine



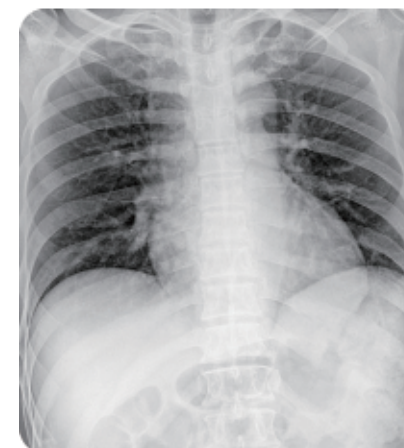
lateral lumbar spine



frontal cervical spine



lateral cervical spine



frontal chest spine



lateral ankle spine

Power persistence flexibility and convenience

Two independent power supply, one for motion, the other for image, long battery endurance.

Super Electric Capacity

Equipped dedicated super capacitor as the power supply for radiography mode, without direct power supply, and convenient in wards, consulting room. Image collecting is more stable and reliable. long-term working with short charging (finished within 20 minutes)

Large Capacity Lithium Battery Pack

Electric power assisted, helping move continuously 20Km by a single charge, long-distance endurance can be satisfied.

Dual Motor Drive

Electric power assisted motor drive, double wheel driven, zero radius turning. Convenient, flexible to move.

110V / 220V power both can be applied



Intelligent operating system

Humanization design, building good experience of interacting.

Graphical Control Interface

Large size and flushbonading human graphic LCD touch screen design. Simple but intuitive interacting interface. With automatically adjustable parameters of adults and children in the aspect of multiple body area, positions, shapes.

Double Exposure Model Design

Hand brake for close range exposure, wireless remote control for long-distance exposure. It is easy to realize compartment operation. Convenient for clinic use.

Integrated Workstation

Integrated image acquisition system and X-ray generator control, ensure the efficiency of operation. A variety of post-processing algorithms and techniques, While the image quality is greatly improved, the radiation dose is significantly reduced.

The operation interface has a variety of functions such as patient management, image collection, processing, and observation and case report. Support DICOM3.0 standard protocol and PACS workstation for image transfer.



Flexible Movement Accurate Positioning

Multi-angle flexible control, meet the needs of a variety of bedside photography.

Fast and accurate positioning

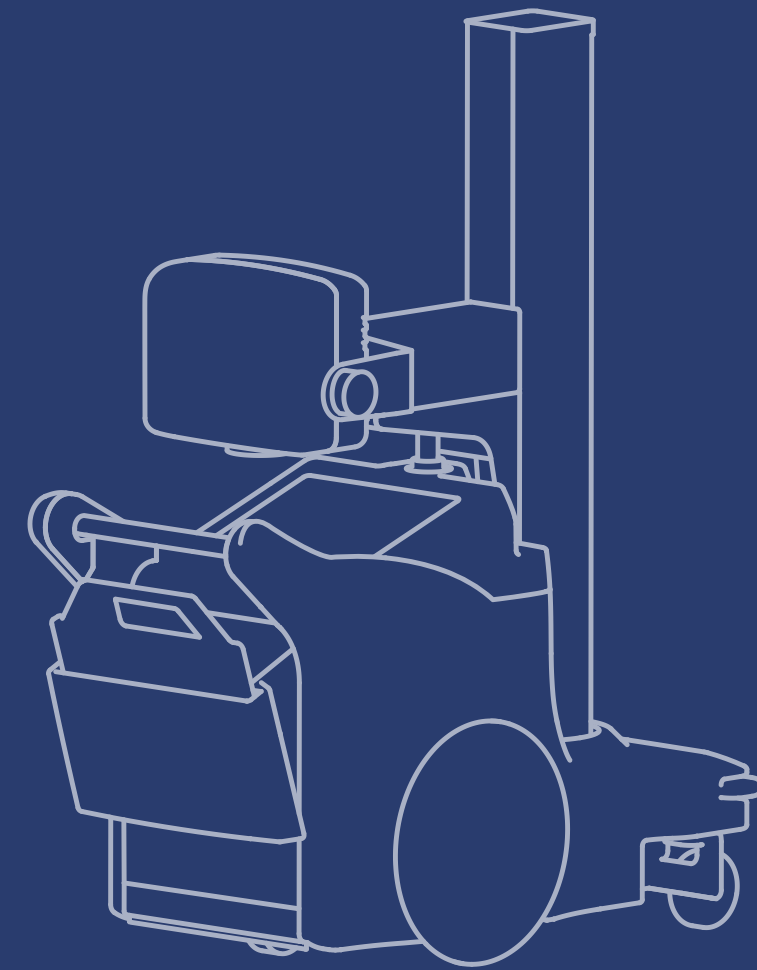
There are 4 one-key unlock buttons, one key to unlock a variety of linkage, namely loose or lock, easy to operate. Wide range frame movement, to meet the clinical needs of a variety of positioning.

Compact machine flexible movement

Column rotation design, wide coverage. Large diameter main wheel, smooth movement, compact and flexible.

Safety and anti-collision design

The front of the machine is equipped with automatic anti-collision protection device to ensure the safety of personnel and machine.



Mobile Digital Radiography