

SonoScape

X3

「 SMALL SIZE,
SMART SIGHT 」



SonoScape

SonoScape Medical Corp.
2F, 12th Building, Shenzhen Software Park Phase II, Keji Middle
2nd Road, Shenzhen, China
Tel: +86-755-26722890 Fax: +86-755-26722850
Email: market@sonoscape.net www.sonoscape.com

U-X320200226



Revolutionizing ultrasound scanning, the handcarried color Doppler system X3 is equipped with advanced technology to present you with excellent image quality. Taking into account the various situations you may find yourself in, the X3 is extremely light weight and small with a laptop design providing you with an experience of extreme mobility and flexibility during any situation. X3, offers a wide range of transducers to fit your every need for clinical applications, and its professional exam modes will bring renewed confidence in your examinations.

Advanced Technology

The new platform provides users a more efficient scanning process, due to its advanced technology. The X3's image quality gives users a clear view of lesions, which enable users to improve diagnosis accuracy and save scanning time.

 Multi-beam processing technology

 Spatial compound imaging

 μ -Scan image processing technology

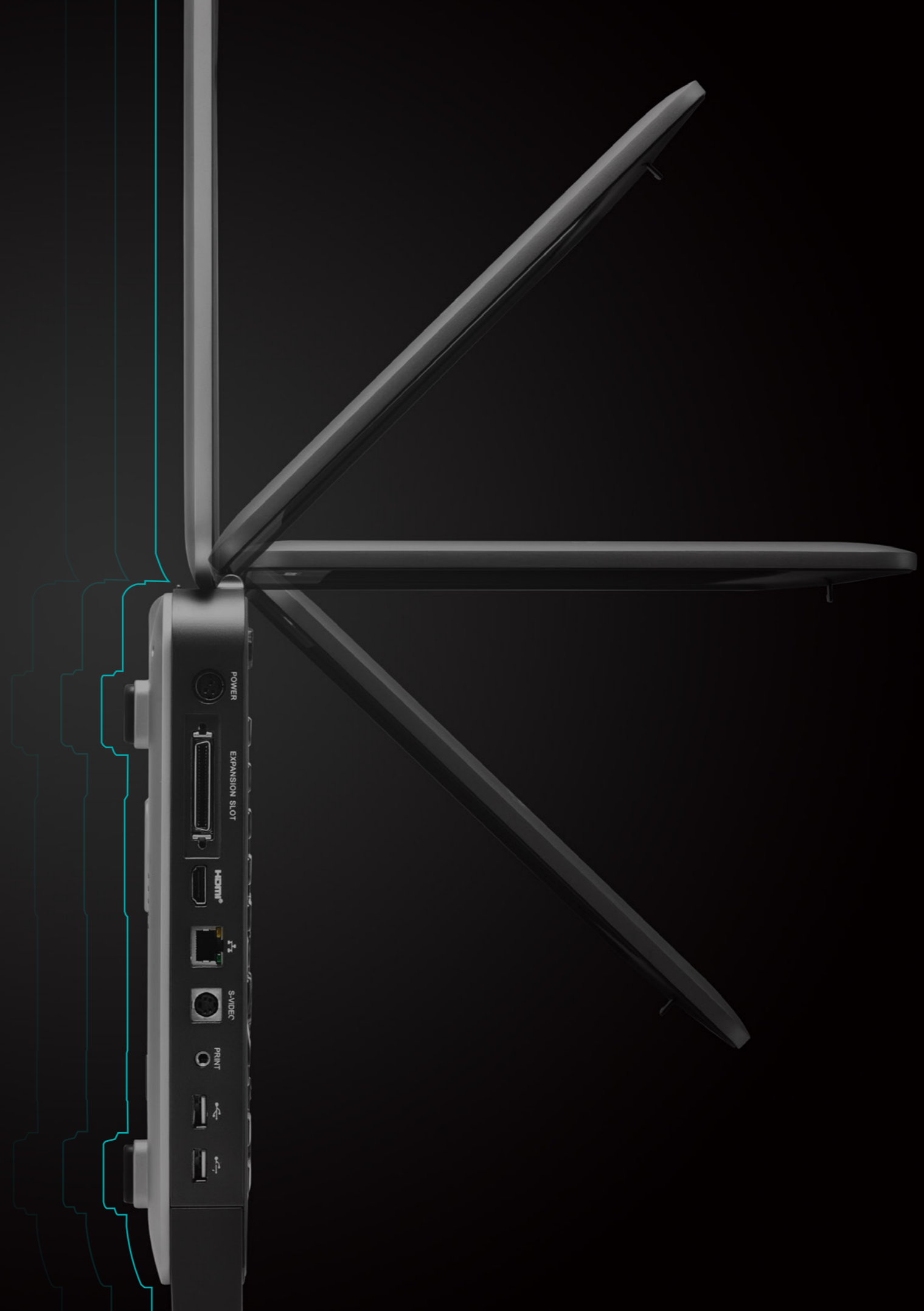
 Pure inversion harmonic imaging

Ultimate Flexibility

- Laptop size and light weight
- Magnalium-alloy body with 15.6 inch monitor
- 180 degree folding angle
- Anti-reflective screen and auto brightness adjustment
- Integrated trolley with height adjustment
- Noiseless system
- Quick boot up

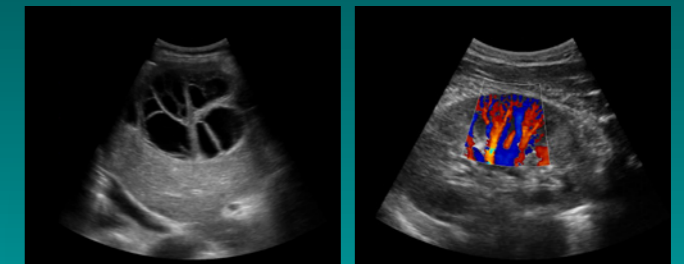
Various Accessories

- Comfortable backpack and travelling case
- Extended connector for up to 3 probes
- Wifi and Bluetooth wireless connection
- HDMI



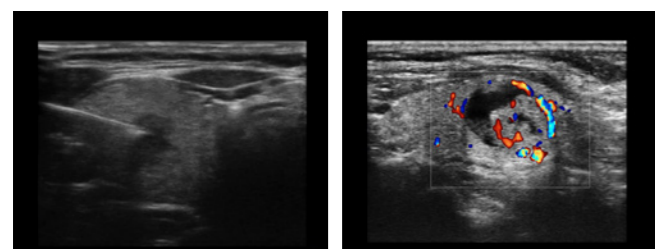


Comprehensive Applications



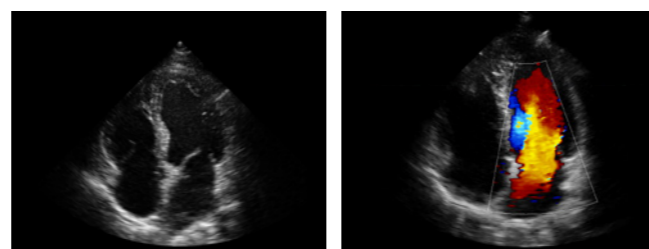
Convex Probe 3C-A

Ideal for an abundant amount of applications such as abdomen, gynecology, obstetrics, urology and abdomen biopsy.



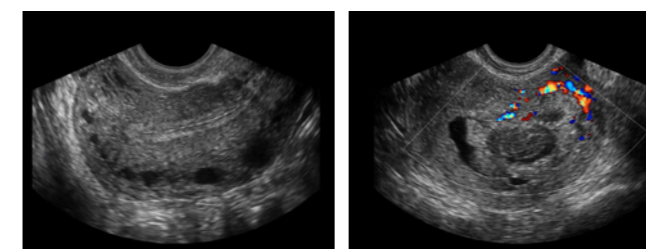
Linear Probe L741

This linear probe is designed to satisfy vascular, breast, thyroid and other small parts diagnosis, and its adjustable parameters could also present users a clear view of MSK and deep vessels.



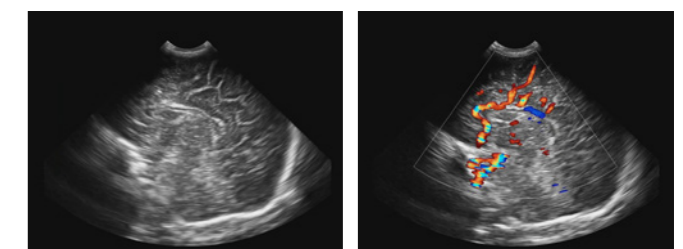
Phased Array Probe 3P-A

For the purpose of adult and pediatric cardiology and emergency, the phased array probe provides elaborate presets for different exam modes, even for difficult patients.



Intracavitary Probe 6V1

Intracavitary probe could face the applications of gynecology, urology, prostate, its temperature detect technology not only protects the patient but also extends service life.



Micro-convex Probe C613

The C613 is a multi-application probe, especially in abdominal scanning for pediatrics and new born babies. The gentle convex shape provides patients a comfortable experience enabling users to get sections easier.

