

CHISON

Value Beyond Imaging

QBit 5 VET

Smart • Slim • Strong

WWW.CHISON.COM





QBit 5 VET is a compact and easy to operate veterinary ultrasound that provides complete solutions, quick and easy workflow, clear and accurate diagnostic images, extensive applications and veterinary packages .

It can be seamlessly applied in all small animals , exotics, equine and farm animals applications. CHISON has been focusing on ultrasound for over 20 years .

We have been integrating the best performance and innovative technologies into QBit 5 VET.



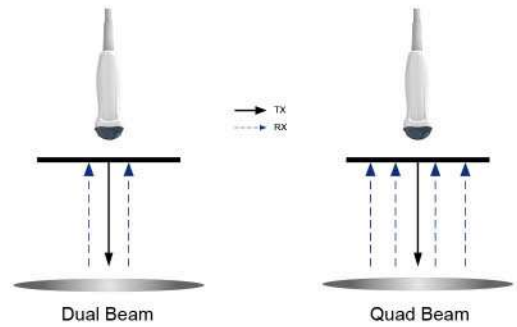
- Built-in battery (optional), excellent for VET condition
- Full screen display mode
- Triplex mode for easy diagnose
- Compact design, adapt to tiny clinics space
- Covering all examination needs in your diagnose

Advanced Technologies



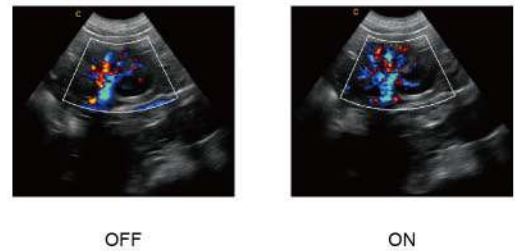
Q-beam

- Compared to the traditional dual-beam, QBit 5 VET uses quad-beam to receive signal, thus doubles the volume of signal received as well as the frame rate.
- Higher frame rate ensures better diagnostic confidence and efficiency. Especially for rapid movement of small animals.



Q-flow

- This adaptive color detection technology can automatically adjust the criteria of color and noise assessment in different tissues.
- As a result, color sensitivity of low-velocity flow is greatly enhanced.



Dedicated veterinary calculation package

	Canine	Feline	Ovine	Equine	Bovine
Cardiology	GSD	HD	BPD	GSD	BPD
Distance	- CRL	- BD	- CRL	- Volume	- CRL
⊕ Single Plane	- HD	⊕ Volume	- TD	⊕ Thyroid	- TD
⊕ Biplane Ellipse	- BD	⊕ Thyroid	- GSD	⊕ Bladder Volume	⊕ Volume
⊕ Bullet Method	⊕ Volume	⊕ Bladder Volume	⊕ Volume	Report	⊕ Thyroid
⊕ Modified Simpson	⊕ Thyroid	Report	⊕ Thyroid		⊕ Bladder Volume
Report	⊕ Bladder Volume		⊕ Bladder Volume		Report
	Report		Report		

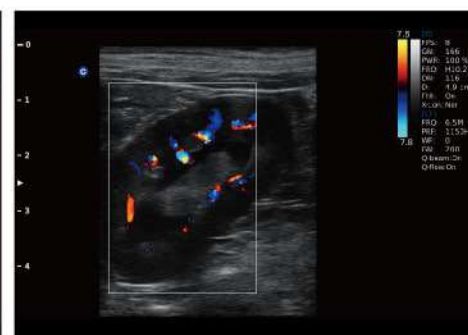
Premium Image Quality



Canine kidney, B Mode



Canine Bladder, B Mode



Canine kidney, C Mode



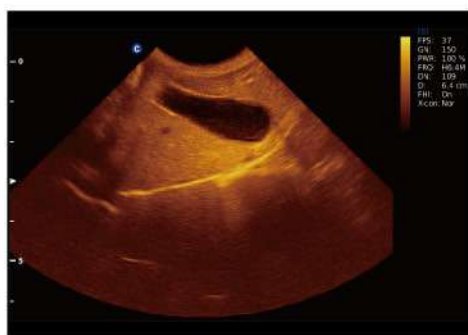
Canine Cardiac, B Mode



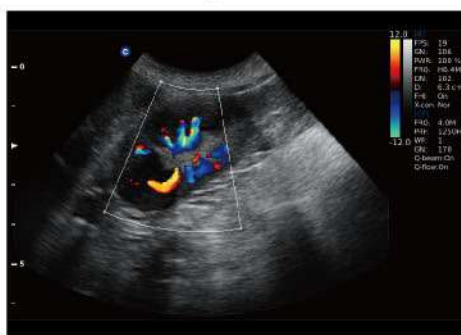
Canine Spleen, B Mode



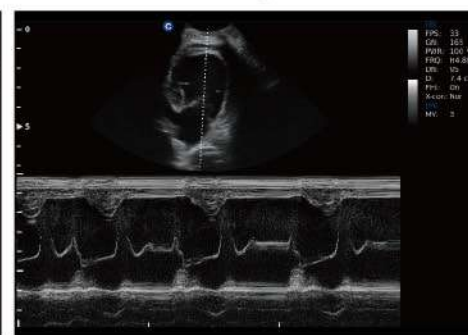
Canine kidney, B Mode



Canine Gall Bladder, B Mode



Canine kidney, C Mode



Canine Cardiac, M Mode



4.0-15.0MHz Linear
D7L40L



4.0-12.0MHz Micro-Convex
D6C15L



4.0-10.7MHz Micro-Convex
D5C20L



2.0-6.8MHz Micro-Convex
D3C20L



2.0-6.8MHz Convex
D3C60L



1.0-5.3MHz Phased array
D3P64L



5.0-10.0MHz Trans-Rectal
D7L40L-REC



4.0-10.0MHz Linear Rectal
D7L50L

CHISON Medical Technologies Co., Ltd.

Sales & Service Contact Address:

No.9, Xinhuihuan Road, Xinwu District, Wuxi, Jiangsu, China 214028

TEL : 0086-510-85310593 / 85310937

FAX : 0086-510-85310726

EMAIL : export@chison.com.cn

We reserve the right to make changes to this catalogue without prior notice
Please contact our local dealer for the latest information.