



[WWW.CHISON.COM](http://WWW.CHISON.COM)

# ***ECO 3 EXPERT VET***

Black & White with Doppler,  
Stunningly Good.



**CHISON**  
Value Beyond Imaging

# Advanced Imaging Technologies

## ECHO

- Advanced technologies:
  - i-Image(Intelligent image optimization)
  - THI(Tissue Harmonic Image)
  - SRA(Speckle Reduction Algorithm)
  - Compound imaging
- Full digital beam-former
- Trapezoid
- Automatic PW trace
- Chroma
- Full screen display mode
- AIO(Automatic image optimization)



## Ergonomics

- Rotatable LED (0~30°) : tailor to different viewing angles
- Ultra-compact & Ultra-light
- Easy to carry
- Keyboard : For easy and quick access
- Dedicated cart TR 9000
- Streamlined workflow
- Anti-water keyboard cover

## ECO-friendly

- Less radiation
- Less power consumption
- Longer usage life:LED
- Longer battery standby time: > 2 hours

## Economic

- The latest platform & more advanced chip-set:brings you better image quality and features at less cost in a more compact box
- Support PC printer, reduce investment & day to day paper cost
- 320G harddisk (option)
- Vehicular Charging



Ultra-compact



Carry case (BG-100)



Dual probe-connectors



Chargeable from your car



## Excellent PW

resolution and automatic PW trace measurement will greatly improve the diagnosis confidence by delivering both qualitative & quantitative results.

Streamlined workflow, Easy diagnosis !

ONLY **6** STEPS!!



**1. ONE KEY** to select the desired application with automatic preset



**2. ONE KEY** to optimize the image automatically.

AIO(Automatic image optimization)



**3. ONE KEY** to save still image and CINE loop



**4. ONE KEY** to measure



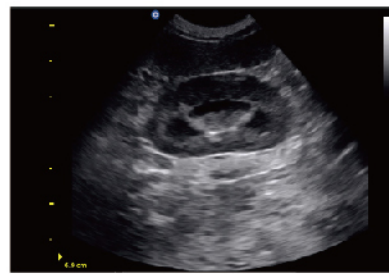
**5. ONE KEY** to make report



**6. ONE KEY** to print to PC or video printer (see page 4 option)



Canine Liver,B Mode



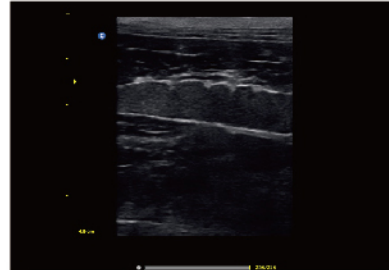
Canine Kidney,B Mode



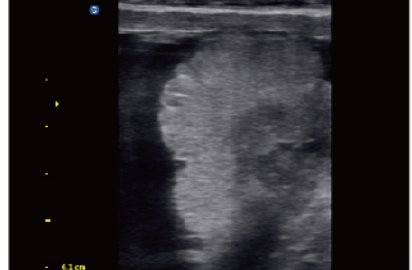
Canine Fetus ,B Mode



Canine Bladder,B Mode



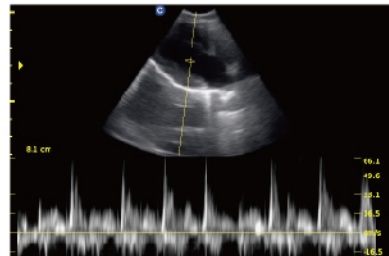
Canine Spleen,B Mode



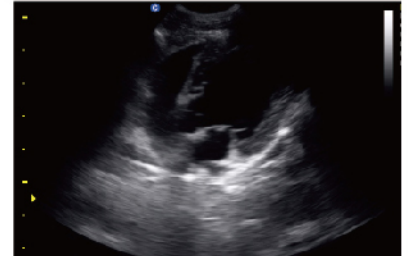
Bovine Reproduction ,B Mode



Canine AC,B Mode



Canine Cardiac,PW Mode



Canine Cardiac,B Mode

# Specification

Applications	Large animal: Reproduction, Tendon.
	Small animal: Abdomen, Small parts, Basic cardiology.
Imaging technologies	i-Image, SRA, Compound imaging, THI
Display Modes	B, B/B, 4B, M, B/M, PW
Gray Scale	256 Levels
Scanning Depth	240mm Max (depend on the probe types)
Probe Frequency	2.5 MHz - 11.0 MHz (Depend on the probe types)
Cine Loop	256 frames
Zoom	4 steps
Software Packages	Dedicated measurement package: General , OB/GYN, URO, Cardiac, vascular, small parts
Archives Management	Patient information management, images record, exam report.
Documentation	Full screen documentation, Hospital name, Patient name, Date/time
Power Supply	AC 100V-240V, 50Hz- 60Hz
Standard Configuration	Main unit , 2 probe connectors, 3 USB ports, VGA port , Video port , LAN port, Full Screen Display Mode, i-Image, Chroma , SRA, Compound imaging, THI, 8G memory card, PW Mode, Built-in Battery ( BT-2500 )
Option	DICOM 3.0, Anti-Water keyboard cover, Carry Case (BG-100 ), Cart TR-9000 Support PC Printer* (HP 1010 / HP 1020 Plus / HP Pro P1102W / HP Pro 200 M251n ), Video Printer ( SONY UP-X898MD )



2.5MHz-5.0MHz Convex  
C3-A



5.3MHz-10.0MHz Linear  
L7M-A



5.3MHz-11.0MHz Linear  
L7S-A



2.5MHz-5.0MHz Micro-Convex  
MC3-A



4.0MHz-7.0MHz Micro-Convex  
MC5V-A



4.5MHz-8.0MHz Micro-Convex  
MC6-A



5.3MHz-10.0MHz Linear Rectal  
L7V-A



**CHISON MEDICAL IMAGING CO., LTD.**

No. 9 Xin Hui Huan Road, New District, Wuxi, Jiang Su Province, China214028  
TEL: 0086-510-85310593 / 85310937 FAX: 0086-510-85310726 EMAIL: export@chison.com.cn

We reserve the right to make changes to this catalogue without prior notice.  
Please contact us or your local dealer for the latest information.

\* Please refer to the user manual for details

ECO3 EXPERT VET-151027