

CHISON
Value Beyond Imaging



ECO 2 VET

Premium Design, Surprising Price



WWW.CHISON.COM

Advanced Imaging Technologies



Ergonomics

- Rotatable LED (0~30°) : tailor to different viewing angles
- Ultra-compact & Ultra-light
- Easy to carry
- Keyboard : For easy and quick access
- Dedicated cart TR 9000
- Streamlined workflow

ECHO

- Advanced technologies:
 - i-Image(Intelligent image optimization)
 - THI(Tissue Harmonic Image)
 - SRA(Speckle Reduction Algorithm)
 - Compound imaging
- Full digital beam-former
- Trapezoid
- Automatic PW trace
- Chroma
- AIO(Automatic image optimization)

Economic

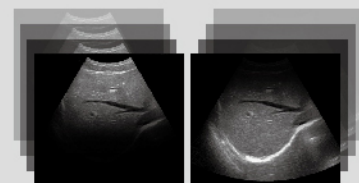
- The latest platform & more advanced chip-set;brings you better image quality and features at less cost in a more compact box
- Support PC printer, reduce investment & day to day paper cost
- 8G memory card
- 320G haddisk (option)
- Vehicular Charging

ECO-friendly

- Less radiation
- Less power consumption
- Longer usage life:LED
- Longer battery standby time:>2 hours

Compound Imaging

The traditional Compound imaging technologies improve the image quality, but lose the frame rate, which affect diagnosis convenience and efficiency. Our Compound imaging has integrated multiple key factors like frequency, focus and time, but will not sacrifice the frame rate.

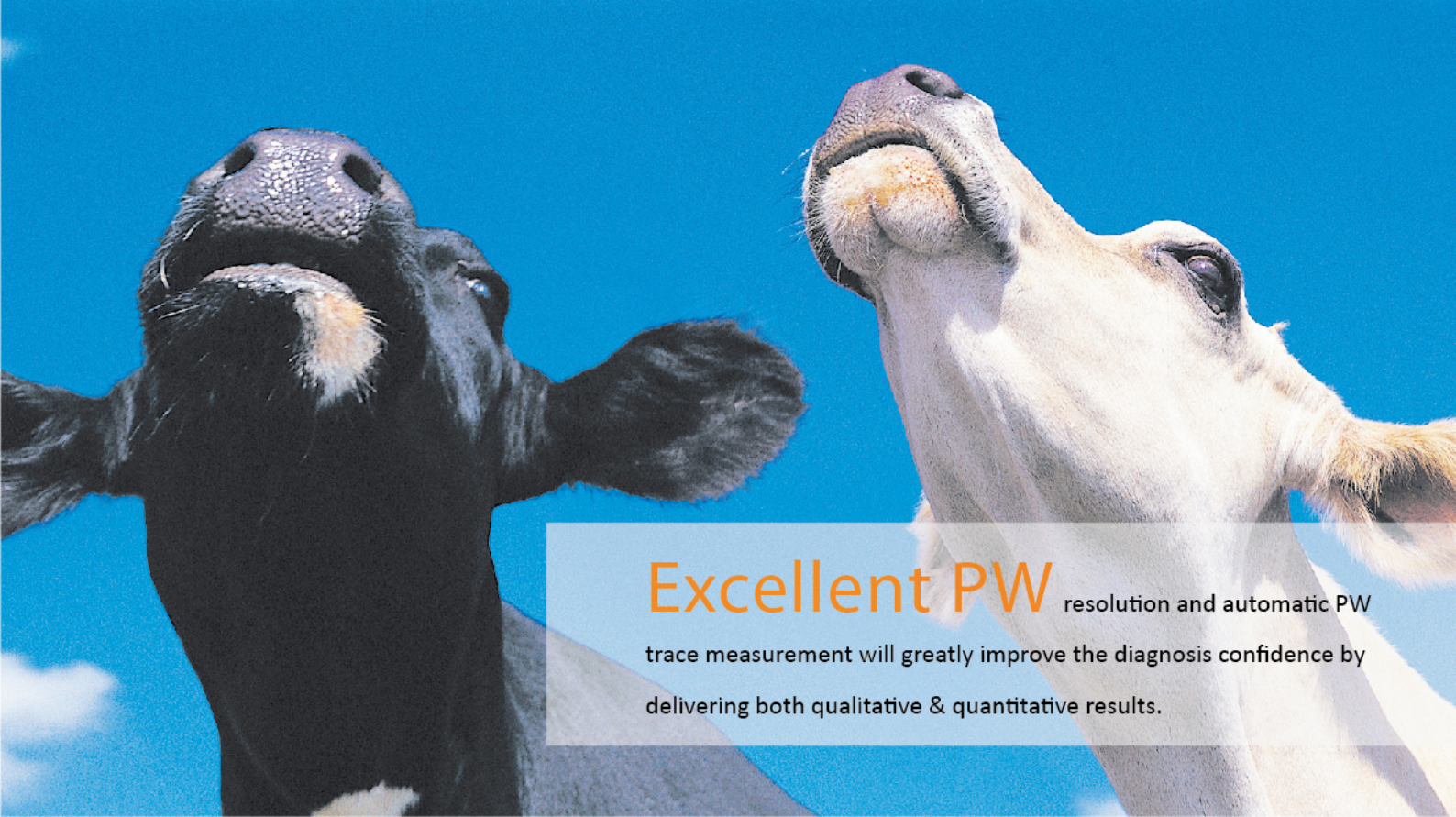


Before Compound Imaging



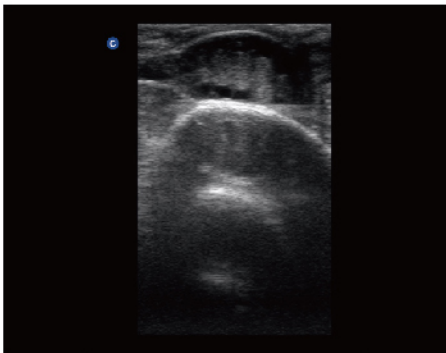
After Compound Imaging



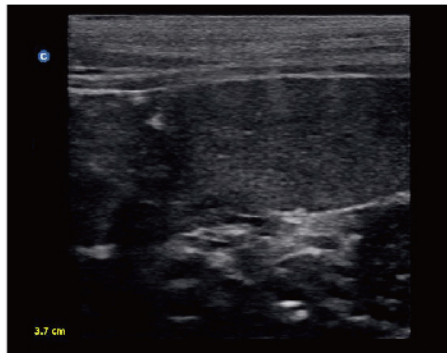


Excellent PW resolution and automatic PW trace measurement will greatly improve the diagnosis confidence by delivering both qualitative & quantitative results.

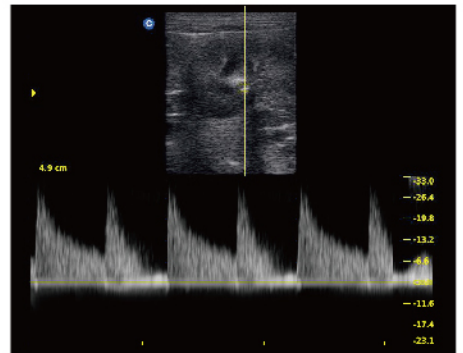
Great image quality



Bovine Ovary, B Mode



Canine Spleen, B Mode



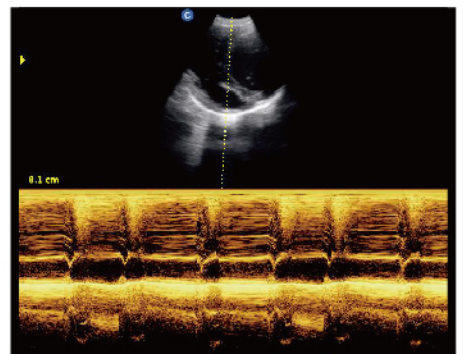
Canine Kidney, PW Mode



Canine Liver, B Mode



Canine Kidney, B Mode



Canine Cardiac, M Mode

Specifications

Applications	Large animal: Reproduction, Tendon.
	Small animal: Abdomen, Small parts, Basic cardiology.
Display Modes	B, B/B, 4B, M, B/M, PW
Gray Scale	256 Levels
Probe Frequency	2.5MHz - 11MHz (Depend on the probe types)
No.of Probe Connectors	One connector (Standard)
Cine Loop	256 frames
Zoom	PIP zoom & pan zoom
Software Packages	Canine: GS, CRL, HD, BD
	Feline: HD, BD
	Equine: GS
	Bovine: BPD, CRL, Trunk Diameter
	Ovine: BPD, CRL, Trunk Diameter
General Measurements	B mode: distance, circumference, area, volume, ratio, angle, % stenosis etc.
	M mode: distance, time, velocity, heart rate etc.
Archives Management	Patient information management, Patient images record, Patient exam report.
Power Supply	AC 240V-100V, 50Hz- 60Hz
Optional	2nd probe connector, Built-in Battery , DICOM 3.0, Anti-water keyboard cover, Carry Case (BG-100), Support PC Printer* , TR 9000



5.3MHz -10.0MHz Linear Rectal
L7V-A



4.5MHz-8.0 MHz Micro-Convex
MC6-A



5.3MHz-10.0MHz Linear
L7M-A



5.3MHz-11.0MHz Linear
L7S-A



5.0MHz-10.0MHz Linear Rectal
R7-A



2.5MHz-5.0MHz Micro-Convex
MC3-A



4.0MHz-7.0 MHz Micro-Convex
MC5V-A



2.5MHz-5.0 MHz Convex
C3-A

CHISON MEDICAL IMAGING CO., LTD.

Factory Address:

NO.8, Xiang Nan Road, Shuo Fang, New District, Wuxi, Jiang Su Province, CHINA 214142

Sales & Service Contact Address:

No. 9 Xin Hui Huan Road, New District, Wuxi, Jiang Su Province, China214028

TEL: 0086-510-85310593 / 85310937 FAX: 0086-510-85310726 EMAIL: export@chison.com.cn



Years Anniversary

E-ECO2VET 180827

We reserve the right to make changes to this catalogue without prior notice. Please contact us or your local dealer for the latest information.

*Please refer to the user manual for details.