

**CHISON**  
Value Beyond Imaging

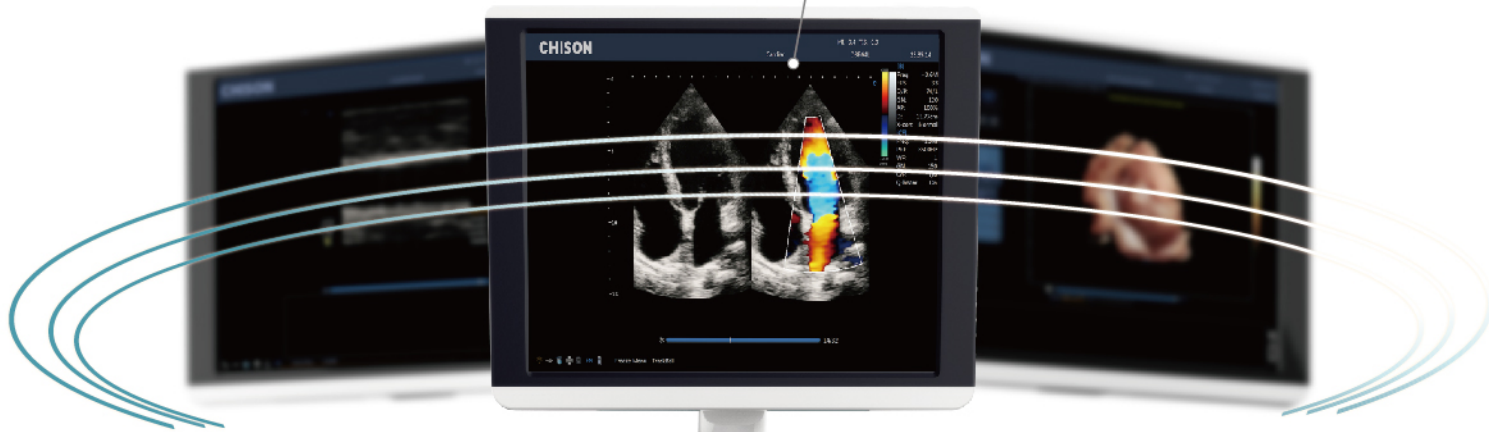


 **Bit 6**  
Experts within Touch

WWW.CHISON.COM

# Industry-leading Design

19 inch HD LED monitor  
Rotatable:  $\pm 90^\circ$



Gel warmer (optional)  
Temperature adjustable



Elegant Control Panel



Dedicated video printer socket

Facing front CD/DVD recorder



Built-in Battery (optional)



Four probe connectors



Dual-screen display for better view

Easy to slide

## DUAL SCREEN DISPLAY

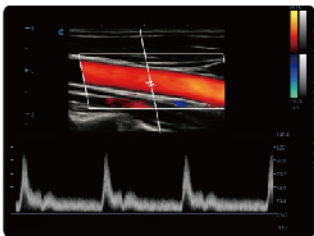


# SUPERIOR WORKFLOW



### ► Intelligent Focus

- Automatically detect the focus position according to the depth
- Focus on the interesting area to improve the quality
- Efficient and intelligent



### ► Intelligent Doppler (Optional)

- Automatically adjust the ROI direction and PFR in color mode and doppler gate in PW mode
- Saving time, Efficiency
- Much easier for the sonographer



### ► Raw data

- Provide the freedom to perform image adjustments;
- Speedy scanning time, save the processing time
- Efficiency and fast

## 19 inch HD LED monitor



- 90% image area
- full screen function, deliver the large image;

## 10.1 inch HD touch panel

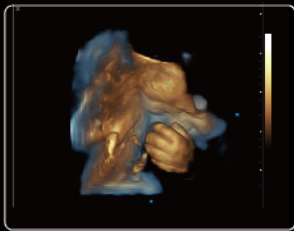


- Super responsive
- Ergonomic tilting ensures all-dimensional, multi-angle visualization;
- Customized layout, just one-touch operation ease of use.

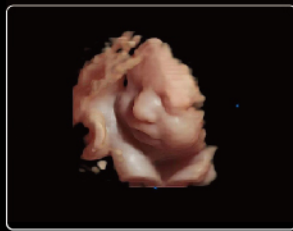
# Advanced Tools for Optimized Healthcare



4D



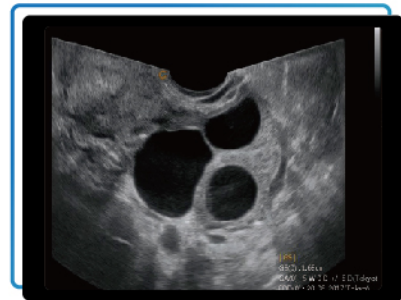
Depth View



Virtual HD

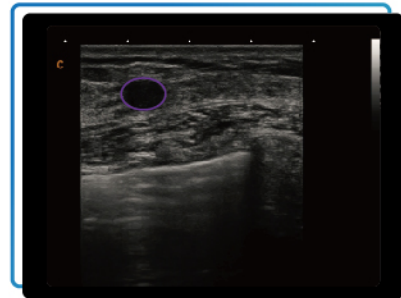
## ► Wide angle TV probe

- Up to 210° extremely wide angle
- Provide more diagnostic information
- Save time, improve the efficiency



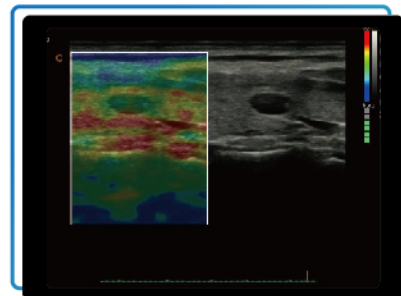
## ► Auto Breast Lesion Detection

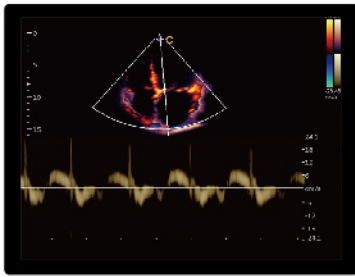
- Automatically detect breast lesion
- Provide the size
- Efficient for the diagnosis



## ► Quantitative Elastography

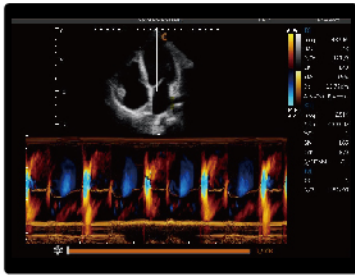
- Display the elasticity of different tissues in different color
- Provide more clinical information , especially for breast tumor, thyroid ,liver and prostate
- Strain ratio measurement quantitatively gives the ratio between the average strain of the selected region and of the nearby normal tissue region.
- Available on versatile transducers.





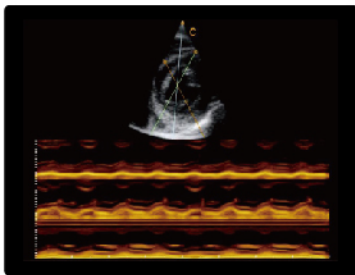
## TDI

- Tissue Doppler imaging is a novel echocardiography technique that directly measures myocardial velocity.
- Systolic TD measurements assess left and right ventricular myocardial contractile function. Diastolic TD values reflect myocardial relaxation.



## Color M

- Provide cardiac movement information efficiently
- Display corresponding blood flow direction information
- Easy to detect regurgitation



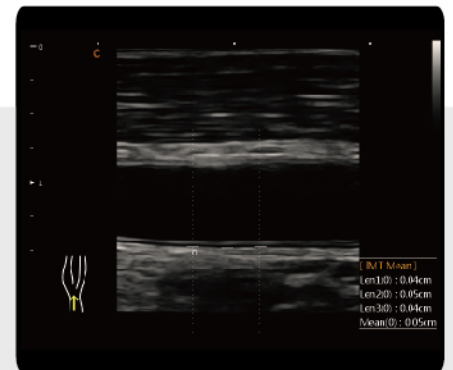
## Free Steering M Mode

- Obtain accurate cardiac function analysis data.
- Obtain accurate cardiac measurement parameters of any section and any Angle
- Excellent and convenient for difficult patient examination



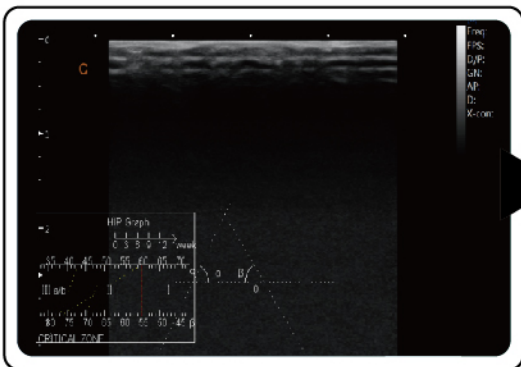
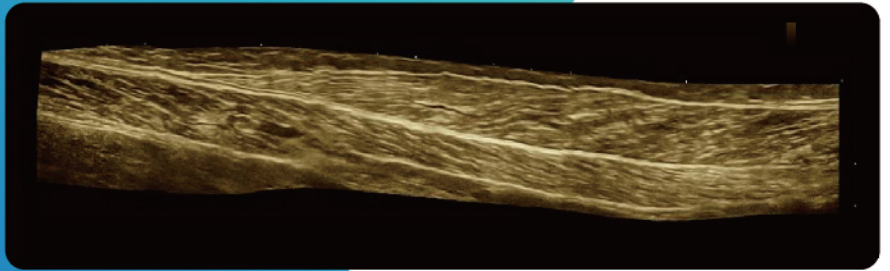
## Auto IMT

Automatically traces the intima, and measures the thickness of the intima. This allows you to measure the intima faster, more easily and more accurately.



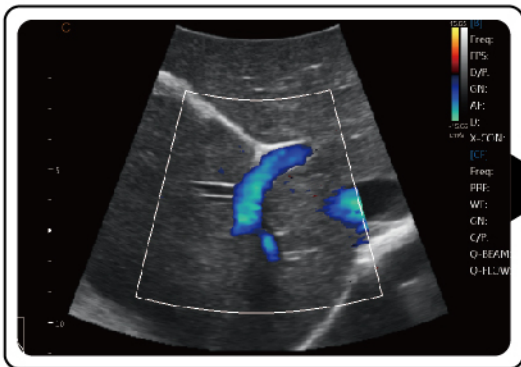


## Real Time Panoramic ▶



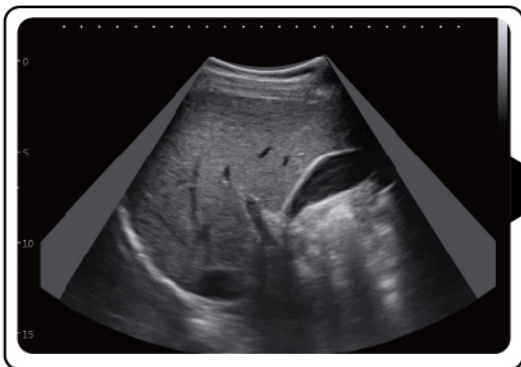
### Smart HIP

- Use a graph for hip orthotics diagnosis, help clinicians to give a more easier and more accurate diagnoses during the pediatric hip scanning.
- Different angles indicate different level of hip deformity, which is more easier and obvious to see with the aid of the graph. (I, II, D, IIIa, IIIb).



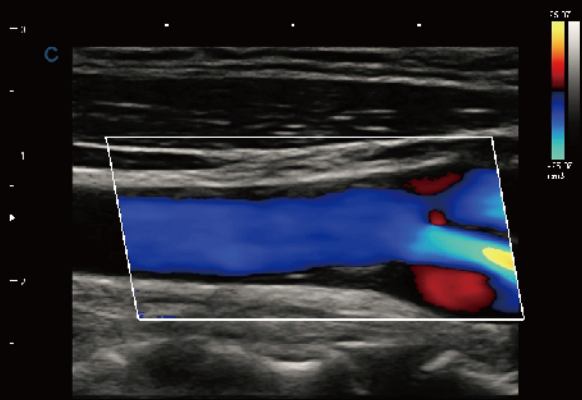
### HD CZoom

- Zoom the color information, remain the high resolution
- Important for the small vessel blood information detection, especially for the fetal heart diagnosis.

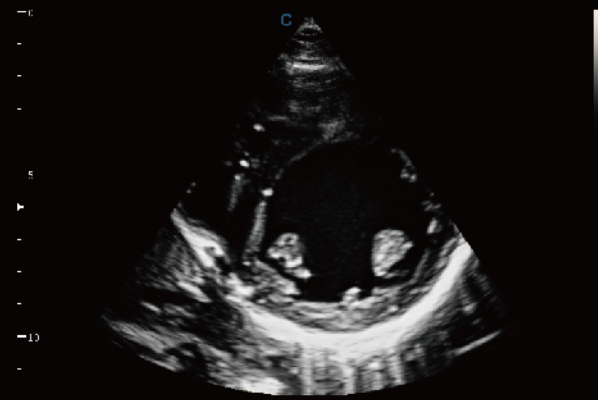


### Virtual Convex

- Enlarge the scanning area in convex probe, same as convex trapezoid
- Better for the big organ display, especially liver, kidney through the rib space



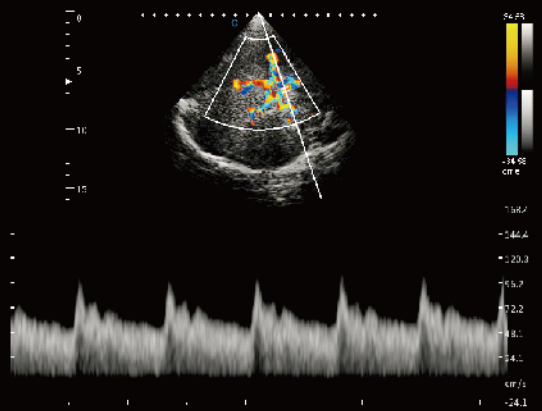
Carotid Plaque, C Mode



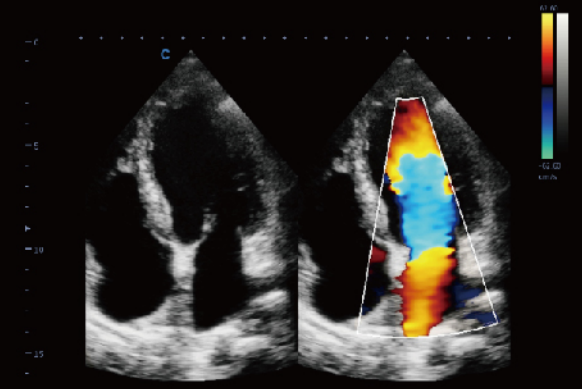
Papillary Short Axis View, B Mode



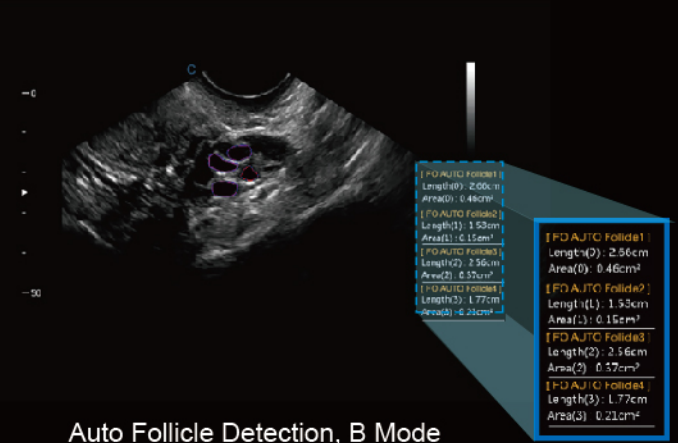
Fetal Face, Virtual HD



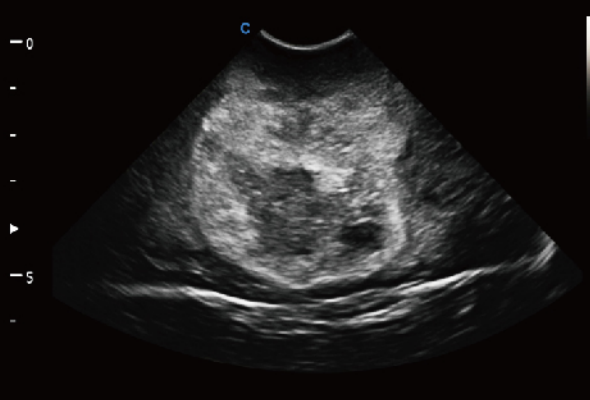
Transcranial, PW Mode



Four Chambers View, B/BC Mode



Auto Follicle Detection, B Mode



Pediatric Cerebral Tumor, B Mode



Hydronephrosis, B Mode



# WIDE VARIETY OF TRANSDUCERS



2.0MHz-6.8MHz  
Convex D3C60L



7.0MHz-18.0MHz  
(With FHI) Linear D12L40L



4.0MHz-15.0MHz  
Linear D7L40L



2.0MHz-6.8MHz  
Volume V4C40L



4.0MHz-15.0MHz  
Transvaginal D7C10L



4.0MHz-12.0MHz  
Transvaginal D6C12L



1.5MHz-5.3MHz  
Phased array D3P64L



2.0MHz-8.0MHz  
Phased array D5P64L



2.0MHz-6.8MHz  
Micro-Convex D3C20L



4.0MHz-12.0MHz  
Micro-Convex D6C15L

## CHISON Medical Technologies Co., Ltd.

### Sales & Service Contact Address

No.9, Xinhuihuan Road, Xinwu District, Wuxi, Jiangsu, China 214028

**TEL:** 0086-510-85310937

**FAX:** 0086-510-85310726

**EMAIL:** [export@chison.com.cn](mailto:export@chison.com.cn)

We reserve the right to make changes to this catalogue without prior notice  
Please contact our local dealer for the latest information.