

Nanjing Perlove Medical Equipment Co., Ltd

Add: No.97, Wangxi Road, Jiangning District, Nanjing 211122

Tel: +86-25-87187780 +86-25-68571666-9350 9353

Fax: +86-25-87187780

Http://www.perlove.com.cn

E-mail: overseas@perlove.com.cn



**PERLOVE
MEDICAL**



**OUR UPCOMING
EXHIBITIONS:**

You can see more details on our website
Http://www.perlove.com.cn



PERLOVE MEDICAL

For Overseas Market: Nanjing Perlove Medical Equipment Co.,Ltd.

For Domestic Market: Nanjing Perlove Medical Equipment Co.,Ltd.

Zhuhai Perlead Medical Equipment Co.,Ltd.

PLX7000

High Frequency Mobile Digital C-arm System

Version: 3.0 Year: 2020

Http://www.perlove.com.cn



Make your diagnose More accurate

- ※High-frequency generator deliver the power you need for all the typical applications in spine surgery, orthopedics, traumatology, urology and pain management.
- ※Unique design of large thermal capacity (>1000kJ) with advanced heat dissipation technology, allows for clear images, even for long or repeated procedures.
- ※High-resolution CCD camera with 1K×1K image matrix, over 4000 shades of gray, realizes more accurate diagnose.



- ※Advanced functions of Images optimization, strengthen module, real-time displaying the clear clinical images.
- ※Professional working station has more image post-processing functions such as the image W/L adjustment, region of interest balance, GAMMA correction, flip, noise reduction, smoothing, sharpening etc.
- ※Two monochrome 19" flat-screen monitors clearly visualize the smallest anatomical details.

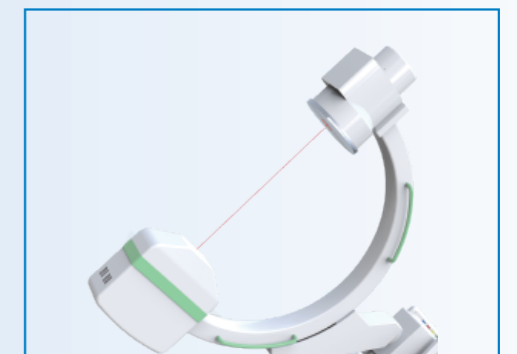


Perfect Digital Image Chain

Pictures for reference only,
subject to our available products

Reduce the X-ray radiation to the minimum Care for operators and patients health

- ※Short, sharp pulses for clear images and the radiation exposure for the operators and patients can be reduced to a minimum.
- ※Motorized iris collimator with multi-leaf, supports high accuracy for selected x-ray field size.
- ※Crosshair overlay corresponding with laser light, designed for easily checkpoint location before operation, avoiding unnecessary exposure.
- ※Professional remote controller for exposure, allows operators retreating to X-ray exposure.
- ※Professional storage system for single and continuous images, reducing the repeatability of the exposure.

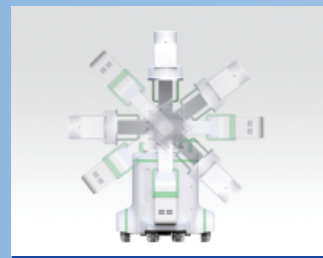


Intelligent control system make the operation more efficient and easier than ever before

- ※Hand controller on C-arm stand: control the mechanical and collimator movement, improve your workflow even you are away from the unit.
- ※Hand controller on the work station trolley: select the mode of fluoroscopy.
- ※Synchronized dual touch-screen panels mounted on C-arm stand, with intuitive user interface and APR parameters setting, make the exposure control at your hand all the time.



- ※Double rotatable flat-screen monitors on the trolley, clearly visualize the smallest anatomical details even at an angle.
- ※The wide opening and depth of the arc make for precise alignment with minimum interference with the operating area.



motorized rotated in 360°



motorized horizontal stretch



motorized horizontal stretch



motorized up and down



motorized slip along the orbit

※Four dimensional movement motorized movement for easy and accurate positioning.

Four-dimensional movement mechanical design provide you the most comfortable operation environment



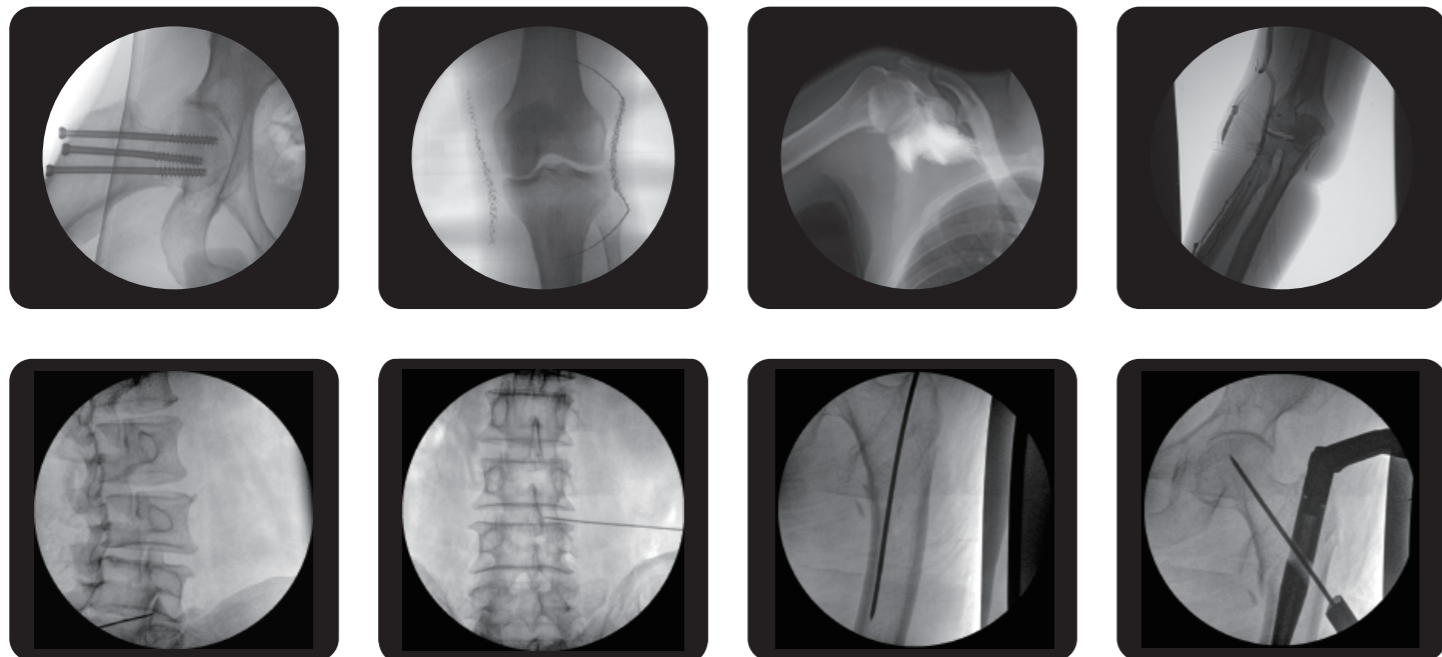
With cutting-edge technology and high performance, this system becomes a reliable partner in the OR for a vast range of surgeries.

Professional diagnostic and treatment platform delivers the optical performance for wider application.

- ※Pain management
- ※Orthopedics
- ※Urology surgery
- ※Spinal surgery
- ※Abdominal surgery
- ※Digestive department
- ※Gynecology



- ※A high performance imaging workstation and image processing system serves you a convenient interface for integration with network.
- ※Work-list registration for seamless integration in your hospital environment.
- ※Dicom 3.0 network interface for integration with PACS or RIS.
- ※CD burning for easy image transfer.



Technical Parameters

Item	PLX7000B	PLX7000C
High Frequency Inverter Power Supply	Output power: 12kW	Output power: 16kW
	Inverter frequency: 60kHz	Inverter frequency: 60kHz
Automatic, Manual Continuous Fluoroscopy	Tube voltage:40kV~125kV continuous adjustment	Tube voltage: 40kV~125kV continuous adjustment
	Tube current:0.3mA~4mA continuous adjustment	Tube current: 0.3mA~4mA continuous adjustment
Automatic, Manual Intensified Fluoroscopy	Tube voltage:40kV~125kV continuous adjustment	Tube voltage: 40kV~125kV continuous adjustment
	Tube current:0.3mA~8mA continuous adjustment	Tube current: 0.3mA~8mA continuous adjustment
Automatic, Manual Pulse Fluoroscopy	Tube voltage:40kV~125kV continuous adjustment	Tube voltage: 40kV~125kV continuous adjustment
	Tube current:0.3mA~30mA continuous adjustment	Tube current: 0.3mA~30mA continuous adjustment
	Pulse frequency:0.1-10 frame/s continuous adjustment	Pulse frequency: 0.1-10 frame/s continuous adjustment
DSI Digital Spot Film	0.1-10 frame/s can be chosen freely	0.1-10 frame/s can be chosen freely
Radiography Tube Voltage, mA	40kV~125kV 160mA	40kV~125kV 200mA
X-ray Tube Special For High Frequency	Rotary anode focus: 0.3/0.6	Rotary anode focus: 0.3/0.6
	Anode thermal capacity: 212kJ	Anode thermal capacity: 212kJ