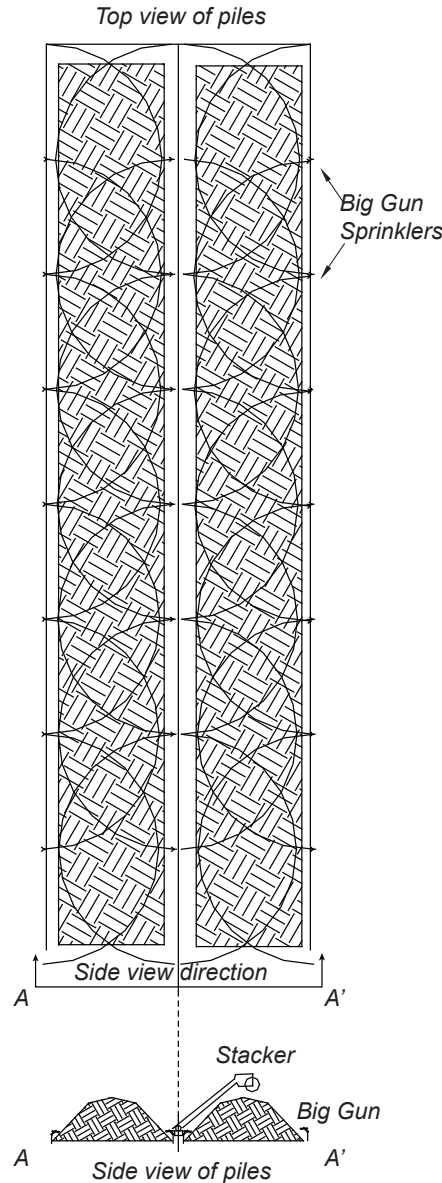
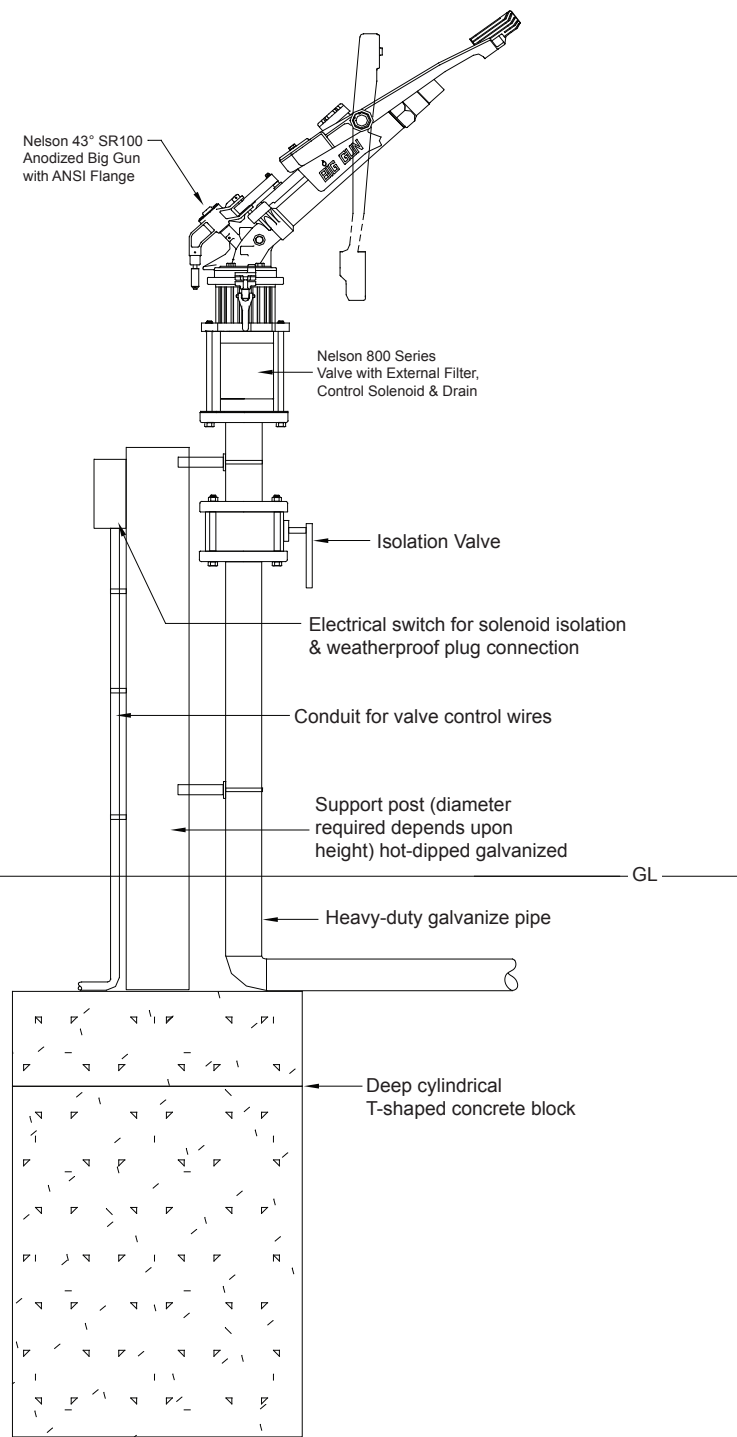


BIG GUN® SPRINKLERS for Industrial Applications

One method for mounting the Big Gun is on a riser near the base of the pile. See drawing below for details of a 100 Series Big Gun installation.



Mounting Design must always consider thrust force and drive arm action as well as wind distortion.

One basic spacing rule of thumb is to have 100% overlap of the spray pattern. For example a sprinkler that throws 100 feet (30.5 m) radius would be spaced not more than 100 feet (30.5 m) apart. Doing this will give some assurance for adequate coverage of water in windy conditions.

CAUTION: If freezing conditions are to occur then plan for a method to drain water from all above ground pipe, stand pipes and risers.

WARRANTY AND DISCLAIMER: Nelson Big Gun® Sprinklers are warranted for one year from date of original sale to be free of defective materials and workmanship when used within the working specifications for which the products were designed and under normal use and service. The manufacturer assumes no responsibility for installation, removal or unauthorized repair of defective parts. The manufacturer's liability under this warranty is limited solely to replacement or repair of defective parts and the manufacturer will not be liable for any crop or other consequential damages resulting from defects or breach of warranty. THIS WARRANTY IS EXPRESSLY IN LIEU OF ALL OTHER WARRANTIES, EXPRESS OR IMPLIED, INCLUDING THE WARRANTIES OF MERCHANTABILITY AND FITNESS FOR PARTICULAR PURPOSES AND OF ALL OTHER OBLIGATIONS OR LIABILITIES OF MANUFACTURER. No agent, employee or representative of the manufacturer has authority to waive, alter or add to the provisions of this warranty, nor to make any representations or warranty not contained herein.

This product may be covered by one or more of the following U.S. Patent Nos. 3,744,720, 3,559,887 and other U.S. Patents pending or corresponding issued or pending foreign patents.

NELSON
 Nelson Irrigation Corporation
 848 Airport Rd., Walla Walla, WA 99362 USA
 Tel: 509.525.7660 Fax: 509.525.7907 info@nelsonirrigation.com
 Nelson Irrigation Corporation of Australia Pty. Ltd.
 35 Sudbury Street, Darra QLD 4074 info@nelsonirrigation.com.au
 Tel: +61 7 3715 8555 Fax: +61 7 3715 8666

WWW.NELSONIRRIGATION.COM

INDUSTRIAL Applications

the original
BIG GUN®
 SPRINKLER



Why choose a Nelson Big Gun®

- The **Nelson name** is synonymous with the best quality available.
- **Heavy-duty construction** ensures long wear life & reliability.
- **Greatest range of options.** Full & part-circle sprinklers available in a variety of trajectory, nozzle & coating options.
- **Valve combinations available** for maximum system efficiency.
- **Easy to operate, maintain and repair** with readily available parts and documentation.

Advantages for Industrial Applications

- Efficient dust suppression
- High volume in short time
- Rugged durability in dirty & corrosive conditions
- Large nozzles less likely to plug, filtration requirements minimal
- All ball bearings are sealed

IT'S THE ONE FOR THE JOB



Nelson Big Gun® sprinklers are ideal for a wide range of industrial applications. With a full range of models available (see *The Original Big Gun®* brochure), flow rates of 30-1200 GPM (6.8-275 m³/hr) can be achieved with maximum uniformity to match a variety of needs.

MINING DUST SUPPRESSION

The rugged durability of Nelson Big Gun® sprinklers make them a favorite for dust suppression. Big Guns are preferred because of the ability to move a large amount of water in a short time. The large nozzle is less likely to plug and the filtration requirements are minimal. All bearings on the gun are sealed ball bearings. Some sprinklers are mounted on high towers in order to throw over the piles. Alternatively, a high trajectory Big Gun sprinkler (fixed 43° and adjustable 15-45° models available) can achieve the necessary stream height to reduce tower height and clear the top of the piles.

SPECIAL OPTIONS:

ANODIZED, POWDER COATED AND STAINLESS STEEL BIG GUNS® for sprinkling with corrosive waters.

COUNTERBALANCE KIT for operation of the Big Gun® with a tilted riser.

WEDGE INSERT for modified trajectory.

HEAVY-DUTY BRONZE BRAKE for operation in environments with airborne, abrasive, dust particles (100 Series only).



NELSON
WWW.NELSONIRRIGATION.COM

