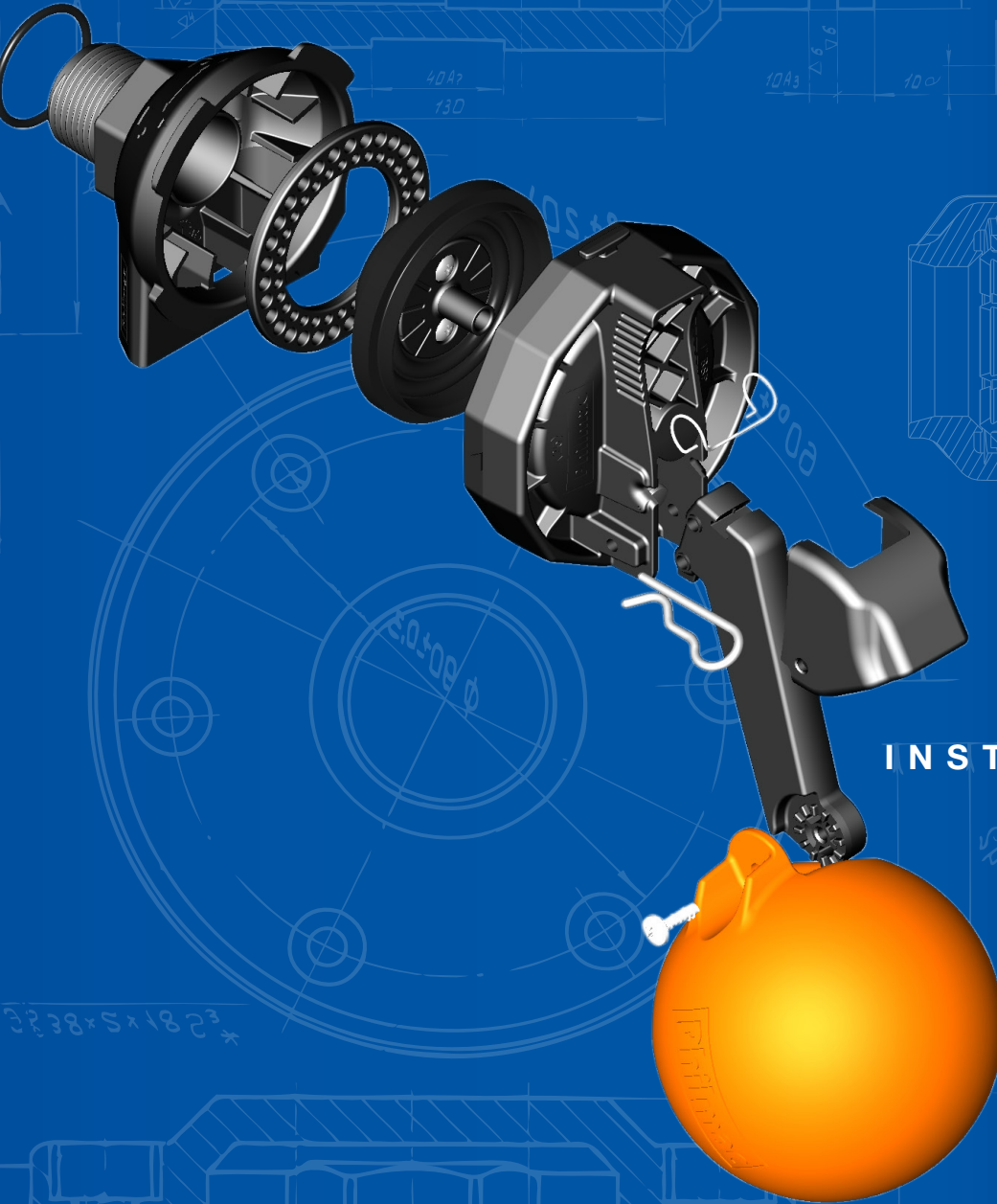


OPTI PHIL

1" FLOAT VALVE

HIGH PERFORMANCE, COMPACT FLOAT VALVE FOR LARGE AND MEDIUM TROUGHS WITH HIGH DEMAND



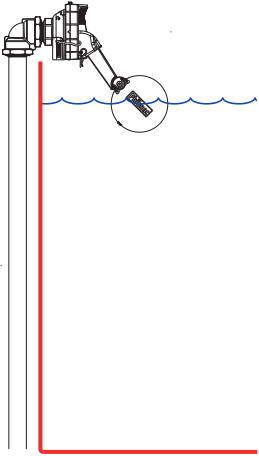
INSTALLATION GUIDE

Philmac

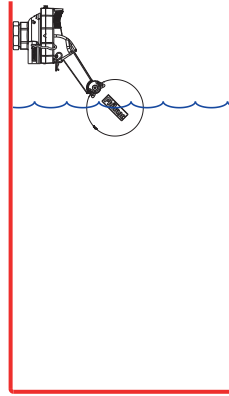
The connection you can trust.

OPTI PHIL INSTALLATION INSTRUCTIONS

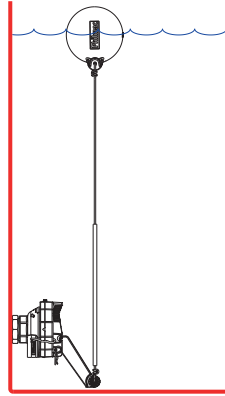
MOUNTING POSITIONS



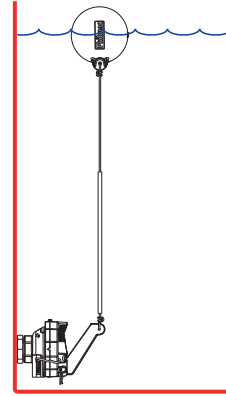
Above water - Overhead



Above water - Side wall



Below water - Side wall



Below water - Side wall lever reverse*



Below water - Bottom mount

* Water outlet position can be adjusted by removing the cap and rotating the body 90°

ABOVE WATER INSTALLATION



1 Apply PTFE tape in a clockwise direction



2 Screw in the float valve by hand, valve is suitable for final tightening with a wrench



3 Ensure float valve is in the vertical position*

BELOW WATER INSTALLATION



6 Remove small R-Pin that holds the pivot pin in place



7 Remove pivot pin, dispose of spring cover



8 Unclip damper spring from cap



9 Remove spring retainer from float arm and remove damper spring



10 Spring retainer and damper spring are not required for underwater installation



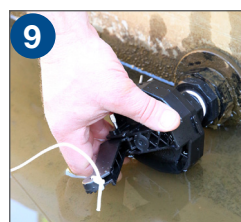
6 Reinstall float arm using pivot pin and replace the R-Pin*



7 Using a Phillips head screwdriver unscrew float



8 Attach float to float arm using supplied cord and anti-tangle tube (trimmed to suit)



9 Screw float valve into position and thread string through plastic tube and attach to float



10 Adjust length of Cord to suit application