

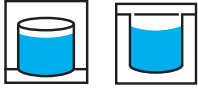
# CM BOOSTER SELF-PRIMING

Approved for  
Drinking Water  
AS/NZS 4020

2  
YEAR  
WARRANTY

INDUSTRIAL QUALITY, SELF-PRIMING PRESSURE BOOSTER

## WATER SOURCE



Above  
Pump Level

Below  
Pump Level

## APPLICATION



Household  
Water

Irrigation

- Designed and built to suit industrial applications, so **easily handles larger domestic rain water supply or mains boosting tasks**
- **Superior stainless steel construction**
- Suitable for pumping from **water sources above and below the level of the pump**, including from below ground tanks
- The robust pump controller features the highest level of **customisable protection and automated pump control**
- Very **quiet operation** that won't disturb your family or neighbours
- **Easy installation - plug & pump** - Connect to the pipework, prime the pump, plug into a power outlet and you're ready to pump



55 dB Max.

**LOW NOISE**



## PUMP CONTROL & PROTECTION FEATURES



### INDUSTRIAL QUALITY

Constructed from high-grade, corrosion resistant materials, for years of trouble free pumping.



### DRY-RUN PROTECTION

The pump will be stopped if no water is detected at the inlet, preventing internal damage and protecting your motor from damage.



### ANTI-CYCLING PROTECTION

The pump will be stopped and alarm activated if it repeatedly turns on and off over a short period of time (called 'cycling'), which could indicate a leaking pipe or dripping tap.



### MAX CONTINUOUS RUN TIME

If the pump runs continuously for more than 30 minutes the motor will be stopped and alarm activated. Could indicate a pipe fracture or outlet left unattended.

be  
think  
innovate

**GRUNDFOS**

## PROTECTED INSTALLATION RECOMMENDED

To maximise the life of your Grundfos pump, it is important to shield it from harsh weather conditions. Undercover installation protects the pump from:



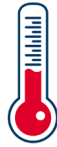
**HEAVY RAIN**



**DIRECT SUNLIGHT**



**FREEZING OR FROSTY CONDITIONS**

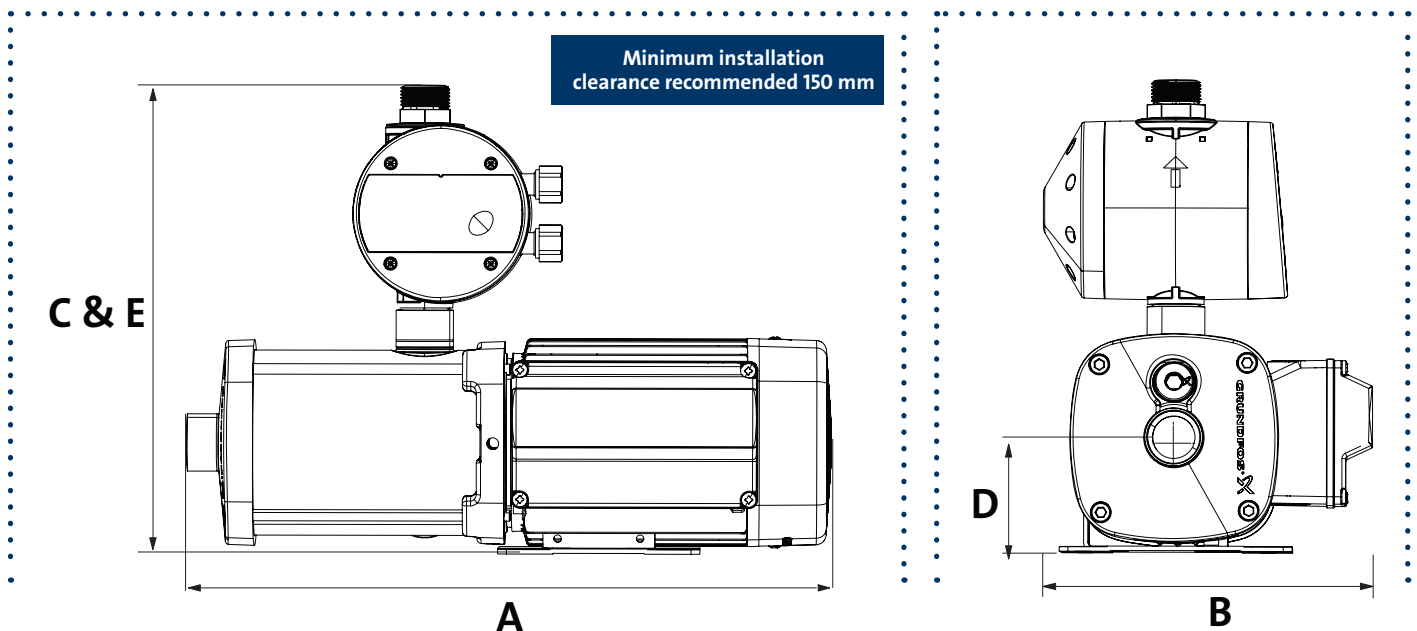


**HIGH TEMPERATURE**



**KEEP THE PUMP WELL VENTILATED TO PREVENT OVERHEATING**

## FIND SPACE FOR YOUR PUMP



Model	Connections		Dimensions (mm)				
	Inlet	Outlet (PM)	A (l)	B (w)	C (h)	D (inlet)	E (outlet)
<b>CMB-SP 1-36</b> 98507562	1" Female	1" Male	377	158	317	75	317
<b>CMB-SP 3-28</b> 98507627			377	158	317	75	317
<b>CMB-SP 3-37</b> 98507628			377	158	317	75	317
<b>CMB-SP 3-47</b> 98507629			413	158	317	75	317
<b>CMB-SP 3-56</b> 98507630			453	158	317	75	317
<b>CMB-SP 5-28</b> 98507635			377	158	317	75	317
<b>CMB-SP 5-47</b> 98507636			453	158	317	75	317