

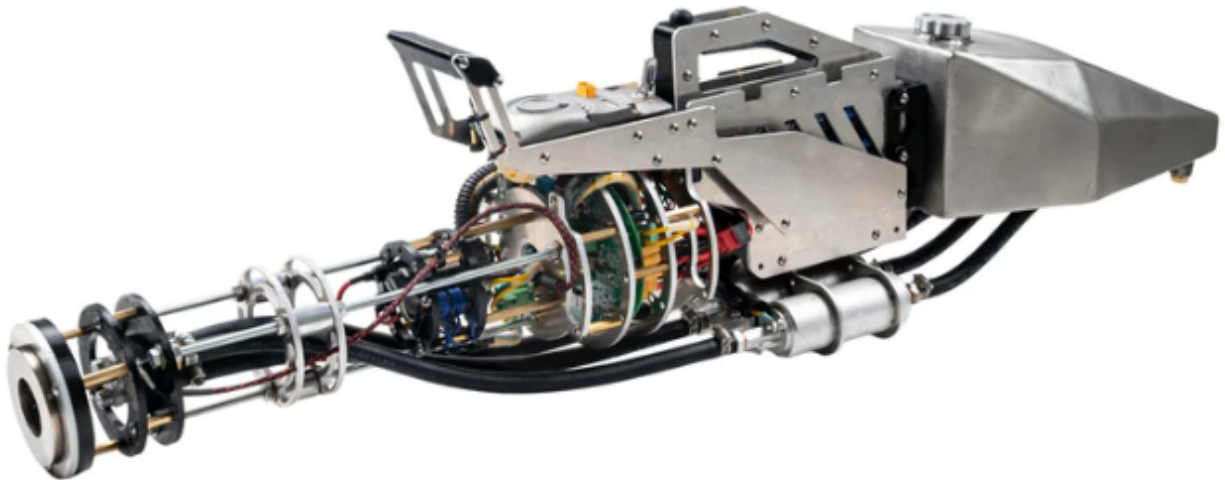


# The Big Boy

Flamethrower

User Manual

V 2023.7.15



# CONTENTS

|                                |    |
|--------------------------------|----|
| SPECIFICATIONS.....            | 2  |
| DISCLAIMER.....                | 2  |
| GENERAL SAFETY WARNINGS.....   | 3  |
| PRODUCT DESCRIPTION.....       | 6  |
| OPERATING INSTRUCTIONS.....    | 7  |
| CHARGING THE BATTERIES.....    | 9  |
| STORAGE.....                   | 11 |
| LIMITED LIFETIME WARRANTY..... | 11 |
| FCC COMPLIANCE.....            | 12 |

# Specifications

|                 |   |
|-----------------|---|
| Model:          | The Big Boy V 2022.10.1                   |
| Rated Voltage:  | 18-24V DC                                 |
| Rated Current:  | 50A                                       |
| Throw Distance: | 45-50 feet                                |
| Battery Life:   | 10 minutes continuous fire (at max power) |
| Dimensions:     | 40" L x 12" W x 16" H                     |

## Includes:

- (1) Prometheus Industries carry case (unless requested otherwise)
- (1) Big Boy Flamethrower
- (1) Battery charger
- (1) Battery cell balancing cable
- (1) Battery charging cable.



**WARNING:** To reduce the risk of injury, all users must read and understand this operator's manual before operating this device. Save this manual for future reference.

**DISCLAIMER:** Prometheus Industries will not be responsible or liable for any damages you or any third party may suffer as a result of use or misuse of this product.

# General Safety Warnings

**DANGER**

**FIRE**

**FUMES**

**OZONE**

**PLASMA**

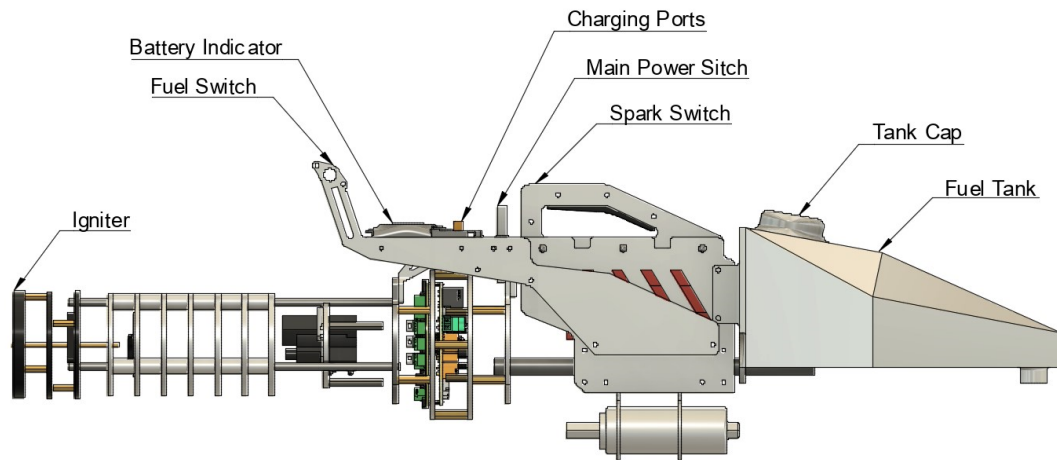
**READ ALL WARNINGS AND INSTRUCTIONS BEFORE USING THIS PRODUCT. DO NOT DISCARD THESE WARNINGS AND INSTRUCTIONS.**

This flamethrower uses gasoline, which is a flammable product. Failure to comply with these warnings and instructions may result in an explosion or fire that may cause property damage, personal injury, or death. Read the instructions and warnings in this manual and familiarize yourself with the flamethrower before using. Do not try to operate the flamethrower before reading instructions.

- Review instructions and warnings periodically to maintain awareness.
- Keep the flamethrower out of reach of children and anyone who has not read instructions.
- Do not point the flamethrower towards self, other persons, animals, or objects.
- Never attempt to use the flamethrower as a cigarette lighter..
- Never attempt to modify the flamethrower construction, and never use unapproved accessories or fuels.
- Treat the flamethrower as you would any fine tool or instrument. Do not drop, throw, or otherwise abuse.
- Do not use a leaking, damaged, or malfunctioning flamethrower.
- Wear safety glasses and protective gear when using the flamethrower.
- Radiant energy can harm your eyes. Wear glasses with an appropriate lens shade number (see OSHA Standard contained in 29 CFR 1926.102).
- Only use the flamethrower in well-ventilated areas.
- Never use the flamethrower near combustibles. Be careful around motor vehicles or any gasoline-fired products and beware of hidden fuel lines and tanks. Do not attempt to ignite combustibles using plasma.
- Be careful when using the flamethrower on windy days. Wind may carry the flamethrower's heat back toward you or other areas not intended to be heated. Windy conditions may also cause sparks to be blown into other areas with combustible materials.
- Heating an object may cause heat to be conducted to adjacent objects that may be combustible or become pressurized when heated. Always check to make sure no unintended objects are being heated.
- Do not touch the tip of the flamethrower. It can get extremely hot during use. Take precautions to protect yourself and others from accidental burns. Do not touch plasma.
- Never leave the flamethrower unattended when turned on.

- Always have a fire extinguisher and a bucket of water nearby when you use the plasma thrower.
- This plasma thrower consumes oxygen and must only be used in well ventilated areas. Do not use it in a confined place.
- Do not use if you have a pacemaker. The electrical arc produces significant radio noise, and any impact it could have on life-support devices has not been thoroughly tested.
- Only charge batteries with the accompanying battery charger.
- Do not use in the rain or when relative humidity exceeds 75%
- Do not place the device on the ground while attempting to start the ignition process.
- Do not put face or hands near the plasma.
- Do not stare at plasma.
- Only use fuels approved by Prometheus Industries. The optimal fuel that we have found is diesel fuel.

# Product Description



Main Power switch - Activates or Deactivates the Flamethrower. Nothing will happen if this switch is set to "OFF".

Fuel Switch - A basic on/off switch that controls whether fuel is being discharged or not.

Spark Switch - A basic on/off switch that controls whether the spark is running.

Fuel pump - Pumps the fuel through the hoses

Battery indicator - Indicates the battery level: 0-100%

Battery - Powers the system

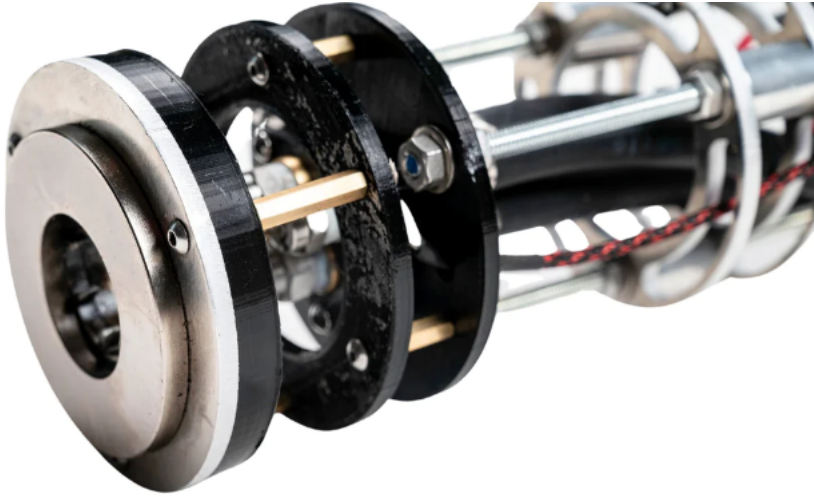
Fuel tank cap - This is where you pour in fuel

Fuel handle - Houses the Fuel Switch. This handle helps to balance the flamethrower, and provides easier control for the user.

Spark handle - Houses the Spark Switch. You hold most of the weight of the flamethrower with this handle.

# Operating Instructions

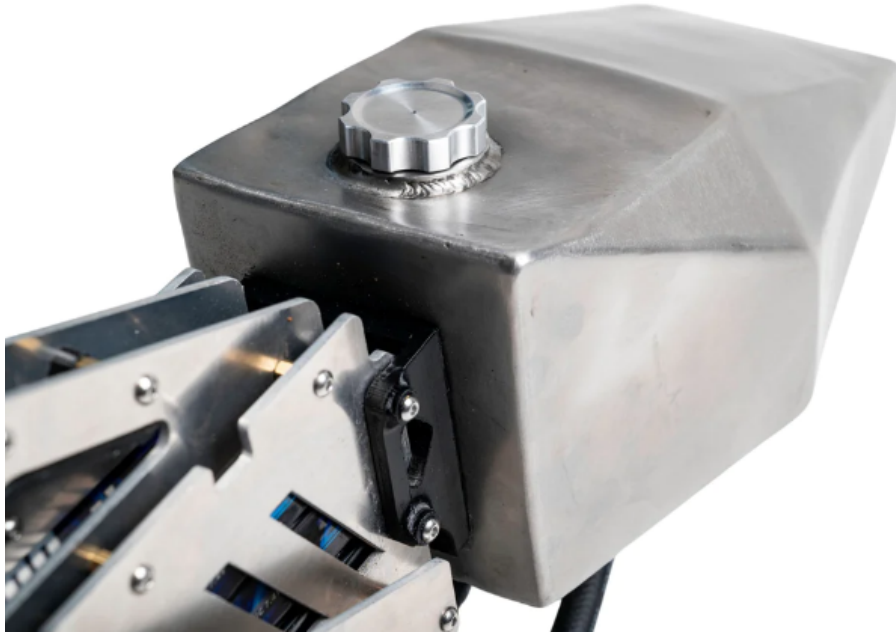
1. Inspect the ignition assembly and verify that no wires are damaged or out of place.



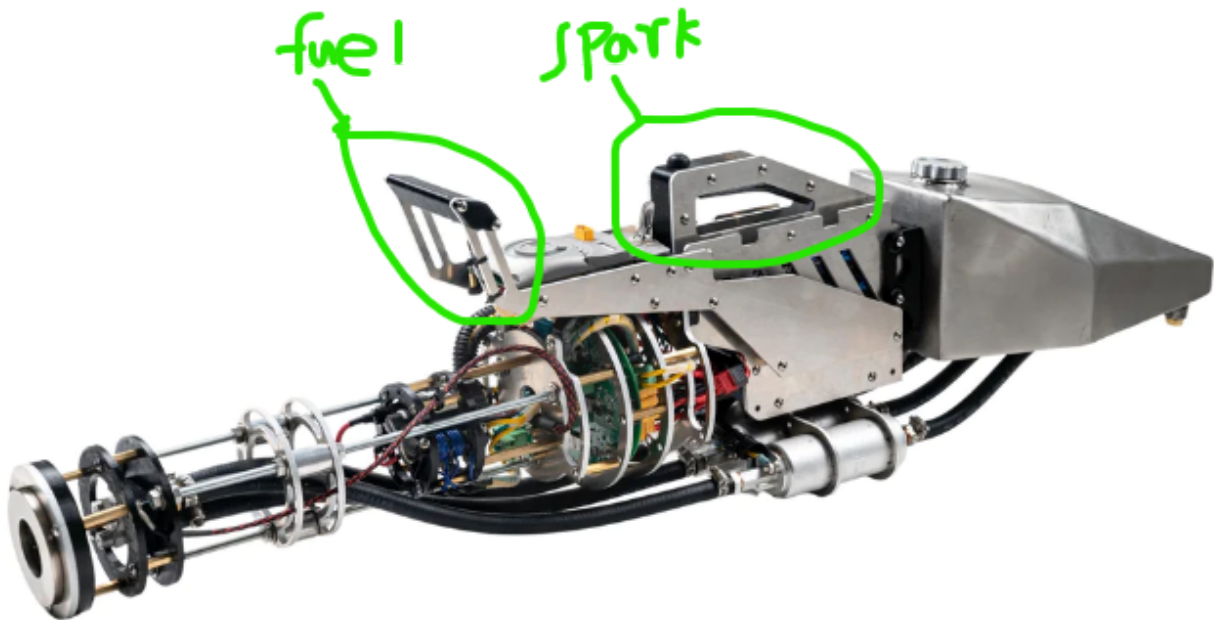
2. Power on the system by flipping the power switch to “ON”. The yellow battery gauge on the top of the flamethrower indicates the battery level.



3. Pour the fuel into the gas tank. For best results, use diesel fuel. Diesel/gas mixtures may cause a small flame at the ignition area



4. Grab the spark handle with your left hand, and the gas handle with your right hand.





5. Point the flamethrower in a safe direction and press the spark switch to create the high-voltage plasma.



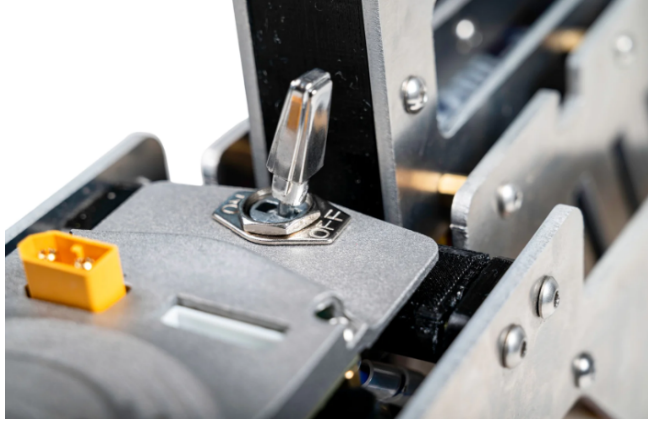
6. Press the fuel switch. Be ready for fire!

7. Release the fuel trigger to stop shooting fuel, then release the spark switch to stop creating the spark.

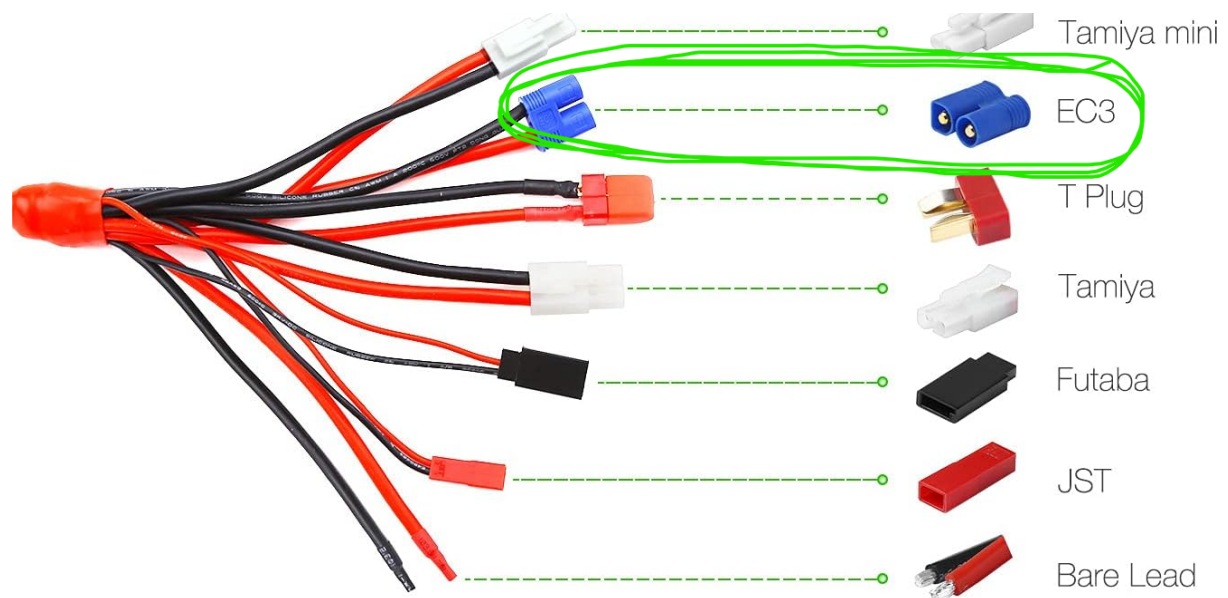
8. Power off the system by setting the power switch to the “OFF” position.

# Charging the Batteries

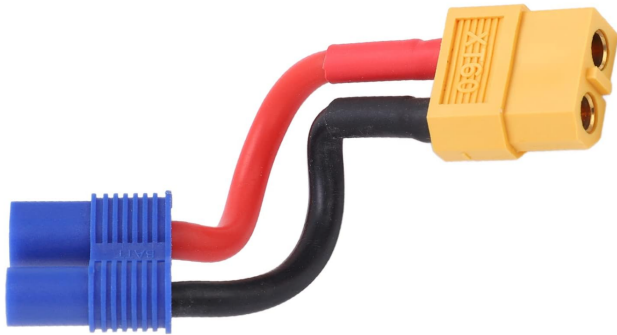
1. Make sure that flamethrower is off by setting the power switch to the “OFF” position.



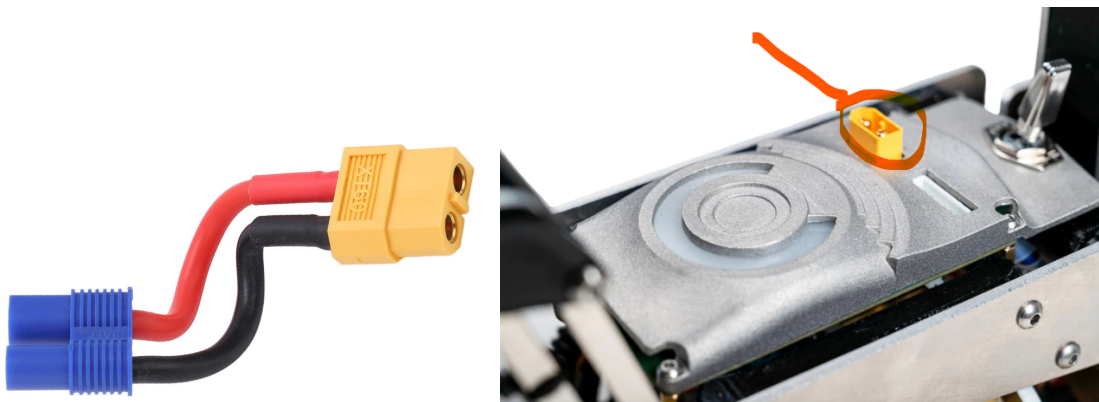
2. Take your battery charger, and find the blue EC3 connector



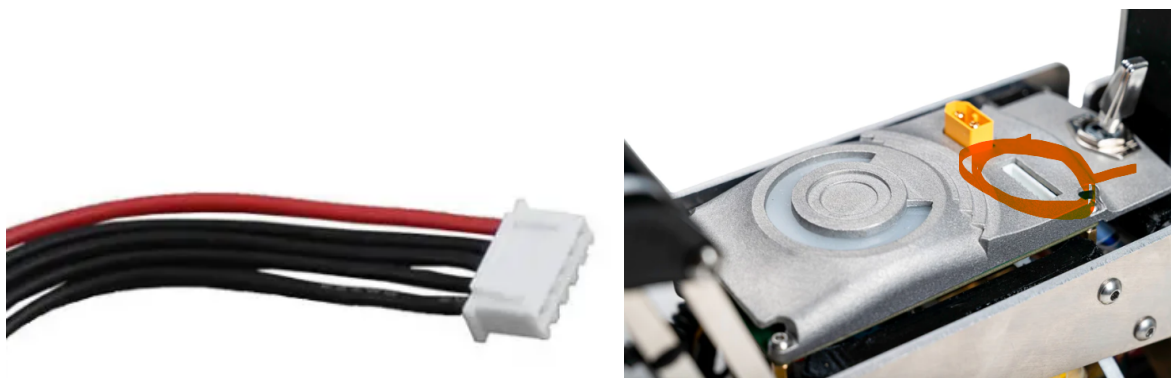
3. Take your EC3 to XT-60 Adaptor cable and attach the blue EC3 connectors



4. Plug the yellow XT-60 connector Adapter cable into the yellow XT-60 connector in the battery charger charging port. Plug the white JST-XH connector into the battery charger cell balancing port.



5. Plug the balancing cable into the power panel.



6. On the charger, select Lithium BATT and press ENTER.



7. Select LiPo Balance CHG AUTO and 6.0A.



8. Hold ENTER for 2 seconds.



9. Press ENTER again





10. You may need to wait 30 minutes or more for the battery to fully charge. The battery charger will make a high-pitched sound to indicate a full charge. When the battery is fully charged, press the “Stop” button.



# Product Storage and Maintenance

- Wipe down the tip of the flamethrower with a paper towel to remove carbon buildup.
- Only store the flamethrower once it has cooled to room temperature.
- Ensure all gasoline has been removed from the system before storing.
- Store the flamethrower in the storage case that was shipped with your order.
- Store the flamethrower and case in a well-ventilated area.

# Limited Lifetime Warranty

Prometheus Industries warrants to the original purchaser that The Big Boy Flamethrower is free from defects in material and workmanship when the product is initially purchased. This warranty is valid for all purchases of the Big Boy on or after April 2, 2022. This warranty does not apply to a product that has been damaged as a result of improper use. This warranty is void if the product is repaired or modified in any way by anyone other than Prometheus Industries or an approved 3rd party. Prometheus Industries will repair the product if it proves to be defective in materials or workmanship.

At the choice of Prometheus Industries, a replacement product may be provided instead of repairing a defective product. The sole obligation of Prometheus Industries and your exclusive warranty are limited to such repair or replacement.

To make a claim under the Limited Lifetime Warranty, contact us on our website [www.prometheusindustries.co](http://www.prometheusindustries.co)

Please provide proof of date of purchase when making a claim.

Prometheus Industries makes no other warranties concerning the product. In no event shall Prometheus Industries be liable for incidental or consequential damages. Some states do not allow the exclusion or limitation of incidental or consequential damages, so the above limitation or exclusion may not apply.

This warranty gives you specific legal rights, and you may also have other rights which vary from state to state.

## **FCC COMPLIANCE:**

This device complies with Part 18 of the FCC Rules.

Operation is subject to the following two conditions:

- (1) This device may not cause harmful interference, and
- (2) this device must accept any interference received, including interference that may cause undesired operation. Changes or modifications not explicitly approved by Prometheus Industries could void the user's authority to operate this equipment.

Note: This equipment has been tested and found to comply with the limits for a Class A miscellaneous device, pursuant to Part 18 of the FCC Rules. These limits are designed to provide reasonable protection against harmful interference in an industrial installation. This equipment generates, uses, and can radiate radio frequency energy and, if not used in accordance with the instructions, may cause harmful interference to radio communications. However, there is no guarantee that interference will not occur in a particular system. If this equipment does cause harmful interference to radio or television reception, which can be determined by turning the equipment off and on, the user is encouraged to try to correct the interference by increasing the distance between the equipment and receiver.





**PROMETHEUS**  
INDUSTRIES

[www.prometheusindustries.co](http://www.prometheusindustries.co)