




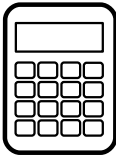
Floor Carpet Measuring Guide

Measuring a room for new carpet can seem daunting but it really needn't be. Our step-by-step measuring guide has been designed to help you through the process with helpful hints and tips which make the job quick and easy. There's even a Floor Carpet Planner included in the guide so you can keep all your measurements and calculations in one place.

1 Be prepared

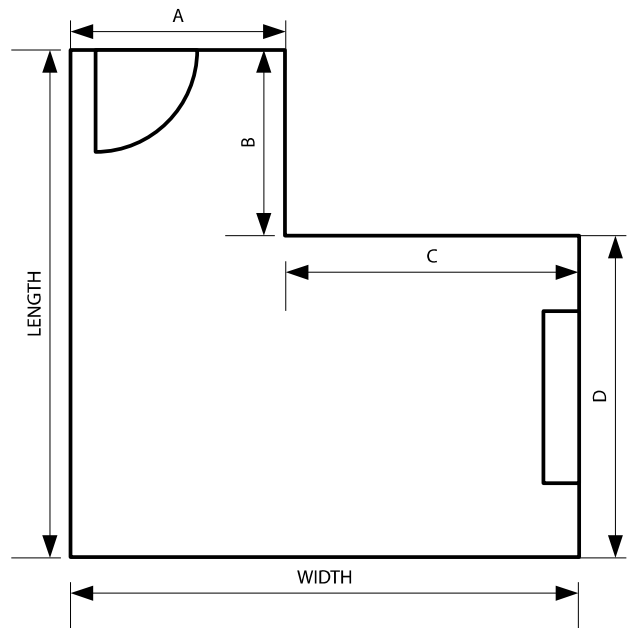
Before you begin, print this guide so you can refer to it when measuring your room and make sure you have the following items to hand.

You'll need:

 <p>This Guide</p>	 <p>Pen or Pencil</p>
 <p>Tape Measure</p>	 <p>Calculator</p>

2 sketch out the room

Using the Floor Carpet Planner, draw a simple outline sketch showing the overall shape of the room and the positions of any doors and fireplaces.



3 Measure the length and width of the floor

For a simple room you only need to measure the length and the width in centimetres and mark these on your sketch. For 'L' shaped rooms you should also measure distances A, B, C and D as shown on the diagram above.

Take your time, measuring at a few different points to ensure you determine what the widest dimensions of a room are - it's easy to miss a small recess behind a door!

TIP: Forget fireplaces and units as they won't affect the maximum measurement. Alcoves are the widest points of a room - think of chimney breasts and units as being cut out of what you have to buy.

4 Add 15cm to each measurement

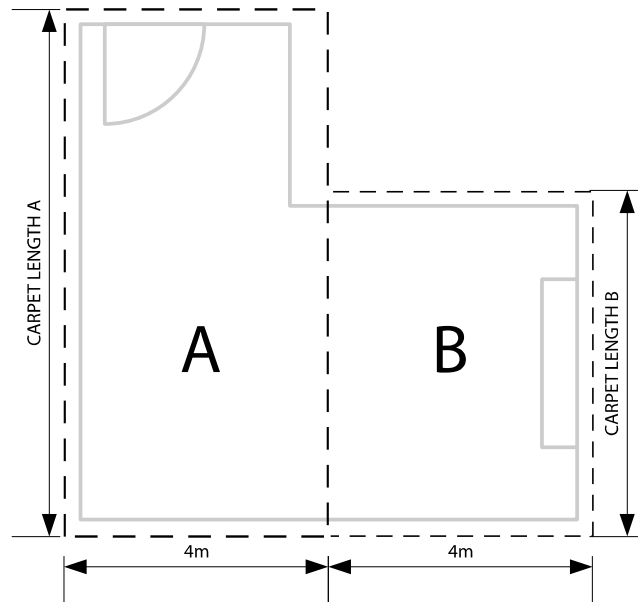
Adding 15 centimetres to each measurement ensures sufficient carpet is available to flow into doorways (and under the door) as well as allowing for wonky walls.

Surprisingly, walls can waver considerably over the course of 4 or 5 metres even if they appear to be straight. Measuring carpets too tight means you'll be left short of the skirting board!

5 Divide the room into roll widths

To calculate the total carpet required, divide the length or width of the room (including your 15cm overlap) into either 4m (400cm) or 5m (500cm) roll widths. To avoid colour variations do not mix roll widths. Next add up the total lengths created by this division of the room (as shown by sections A and B in the example diagram) and round up to the nearest metre. Alternatively please call our sales & advice line on: **0121 369 0727** and we'll calculate the best fit for you.

TIP: Always ensure that you keep the flooring running in the same direction. If you change the direction then the pattern, texture and pile of the carpet will reflect light differently.



6 Place your order

If you have yet to select a carpet from the Interiors By Sutton range visit www.interiorsbysutton.com where you'll find our complete catalogue. Once you have completed steps 1-5 and know which carpet you'd like to buy there are two ways to order your carpet:

Phone

Our specialist staff are available from 9am-9pm Monday to Saturday to answer any queries and take orders over the phone.
Call us on: **0121 369 0727**

Online

Our web site provides a complete catalogue of our carpet range and you can order securely on-line using our simple shopping cart.
Visit us at: www.interiorsbysutton.com

If you are at all uncertain please call our sales & advice line on: 0121 369 0727 before ordering.

Interiors By Sutton - Carpet Planner

Sketch showing overall room dimensions and layout:



Room Length: cm + 15cm = cm / 400 or 500 = widths

Room Width: cm + 15cm = cm / 400 or 500 = widths

Aim for the fewest number of roll widths using either 400cm or 500m rolls for the most economical fit. DO NOT MIX ROLL WIDTHS. Please ensure all measurements are provided in centimetres.