

# Mounting instructions Sprayhood

## Before you start

In your package there are mounting templates in thin white paper, which is packed together with the canvas. On the templates, there are abbreviations for different fittings you might need depending on your boat model. Below are pictures showing the fittings and the ones you need for your specific canopy is packed in a plastic bag together with the frames and eventual rails.

## Tools you need

- 2,5 mm drill
- 3 mm drill
- 3,5 mm drill
- Counterbore
- Star-Screwdriver
- Pointy marker pen
- Sikaflex

**1** Place eventual rails on the front part of the edge or according to pictures packed together with the canvas.

**2** Drill holes and mount the rail screw by screw from the center and outwards. Use 3 mm drill for P-rail or 2,5 mm drill for U-rail. **Do not forget to counterbore the holes and seal with sikaflex.**

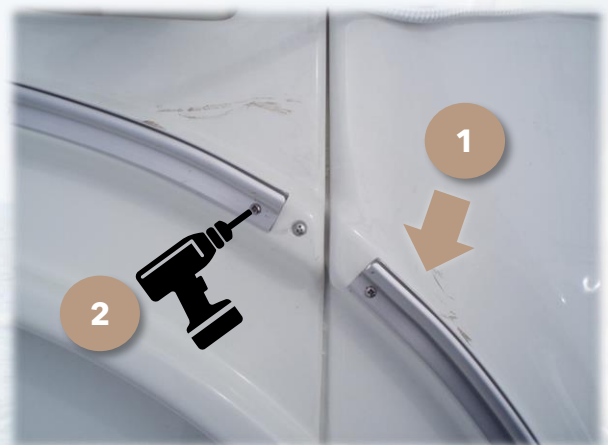


*Tip! Start with the center rail.*

**3** Put the templates on deck in line with the deck layout and other details drawn on the templates. Attach them with tape if needed.

**4** Use the pen to mark where holes for the fittings should be.

**5** Flip the template up-side-down and do the same thing on starboard/port side of the boat.



U-rail

P-rail



# Monteringsanvisning Sprayhood

6

Attach the fittings for the frames. For these you use the 3,5 mm drill. **Do not forget to counterbore the holes and seal with sikaflex.**



7

Attach the frames to the fittings.

8

Mount the front edge of the canvas into the rail and mount the canvas onto the frames.

9

Center the sprayhood and stretch it not too tight with the straps. Stretch evenly on both sides.

10

Attach the first 1-2 buttons/minax in the front divided between starboard and port side according to the canvas.

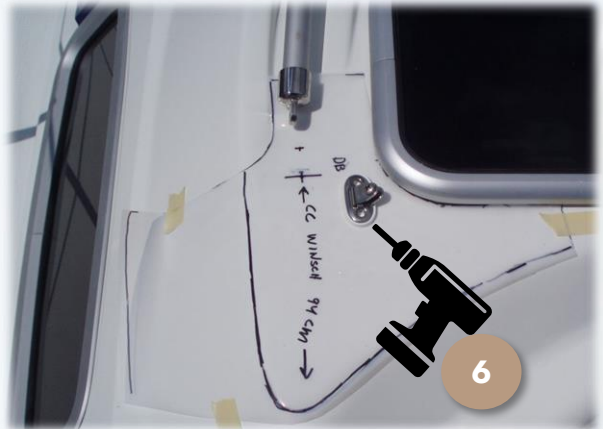
*OBS! For minax - use 3 mm drill or 3,5 mm!*

11

Stretch the sprayhood maximum using the straps.

12

Continue attaching buttons/minax alternating between starboard/port backwards towards the stern.



Sprayhood mounted into 3 rails



Sprayhood som monteras med en mittskena och plastknappar längs sidorna

# Definitions templates

## Explanation fitting types

DB	Rakt däcksbeslag
DBV	Vinklat däcksbeslag
DB XL	Däcksbeslag XL
RB or R	Rutgersson beslag
PK	Plastknapp (button)
KR or GF	Plastkrok, gripfix
L or LK	Lång norsk knapp (button)
TK	Tryckknapp
NB	Nyckelbeslag
M	Minax

## Explanation other

SH or SP	Sprayhood
T	Cockpit tent
XLT	XL cockpit tent
BB	Port
SB	Starboard



M



DB



DBV



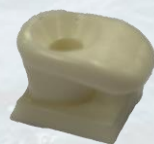
DB XL



RB/R



PK



KR/GF



L/LK



TK



NB

**KAPELL**  
& ANNAT

