

morphy richards

Oil Filled Radiator

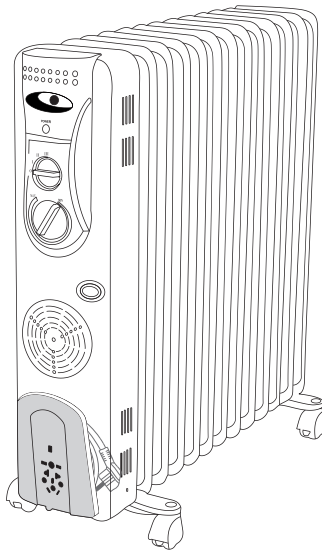
OFR 09 / 11 / 13F

SAFETY

IS: 302-2-30
CM/L-9477201



Please read and keep these instructions



getting the best from
your new Oil Filled Radiator

2year
guarantee
2 ans de garantie / 2 ans de garantie


www.morphyrichards.com
www.morphyrichardsindia.com

Important Safeguards

When using an electrical appliance, basic safety precautions should always be observed, including the following:

Read all instructions before using

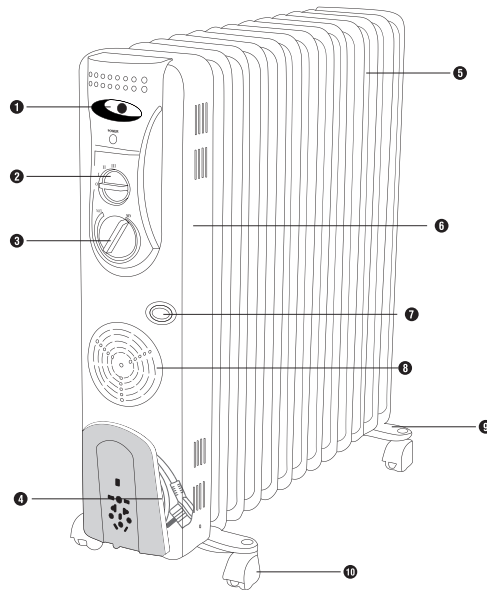
WARNING: To reduce the risk of fire, electrical shock, or injury to person:

- The product is for household use only.
 - Connect the appliance to single phase AC supply of the voltage specified on the rating plate.
 - The meaning of figure  in marking is "DO NOT COVER".
 - In order to avoid overheating, do not cover the heater.
 - Never leave the heater unattended while it is in use. Always turn the product to the OFF position and unplug it from the electrical outlet when not in use.
 - Extreme caution is necessary when any heater is used by or near children, invalids or elderly person and whenever the heater is left operating and unattended.
 - The heater must not be located immediately below an electrical socket-outlet.
 - Do not run cord under carpeting and do not cover cord with throw rugs, runners or the like. Arrange cord away from traffic area and where it will not be tripped over.
 - Do not operate the heater with a damaged cord or plug, or after the heater malfunctions, has been dropped, or damaged in any manner.
 - If the supply cord is damaged, it must be replaced by the manufacturer or its service agent or a similarly qualified person to avoid a hazard.
 - Avoid the use of an extension cord as this may overheat and cause a risk of fire.
 - Use the heater in a well-ventilated area.
- Do not insert or allow objects to enter any ventilation or exhaust opening. To prevent a possible fire, do not block air intakes or exhaust openings in any manner. Do not use on soft surfaces, like a bed, where openings may become blocked. Use the heater on flat, dry surfaces only.
- Do not place this heater near flammable materials, surfaces or substances, as there may be a risk of fire. Keep the above flammable materials, surfaces or substances at least 1m from the front of the product and keep them away from the sides and rear.14. Do not use the heater in any areas where petrol, paint or other flammable liquids are stored e.g. Garages or workshops as a hot, arcing or sparking parts inside the heater.
 - Don't use this heater in the immediate surroundings of a bath, a shower or a swimming pool. Never locate the heater where it may fall into bathtub or other water container.
 - This heater is hot when in use. To avoid burns and personal injury, do not let bare skin touch hot surfaces. If provided, use handles when moving the product.
 - Be sure that no other appliances are in use on the same electrical circuit as your product as an overload can occur.
 - This heater is filled with a precise quantity of special oil.
 - Repair requiring opening of the oil container are only to be made by the manufacturer or his service agent who should be contacted if there is an oil leakage.
 - Regulations concerning the disposal of oil when scrapping the appliance have to be followed.
 - The heater should not be used in a room, of which the floor area is less than 5 M².
 - The images shown in the manual are indicative the actual product may be different.

Save these instructions

Specifications

MODEL NO.	FINS	RATED VOLTAGE	POWER
OFR 09	9	230V~50/60Hz	2000W
OFR 11	11	230V~50/60Hz	2500W
OFR 13F	13	230V~50/60Hz	2900W



- ❶ Carry handle
- ❷ Power selection knob
- ❸ Thermostat control
- ❹ Power cord
- ❺ Radiator fins
- ❻ Front cover
- ❼ P.T.C. Fan Heater Switch
- ❽ P.T.C. Fan Heater*
- ❾ Castor-mounting plate
- ❿ Castor Wheels

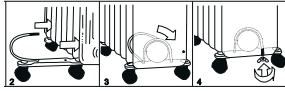
* This feature is available only with OFR 13F. The appliance is equipped with additional function for convection warm air.

To activate this function, simply press the fan switch in front of the oil heater.

Assembly Instructions

The heater is packaged with the feet unattached. You must attach them before operating the heater.

WARNING: Do not operate without feet attached. Do operate the heater only in upright position (feet on the bottom, controls on the top), any other position could create a hazardous situation.



1. Place the radiator body upside-down on a scratch-free location, make sure it is stable and will not fall.
2. Screw off the wing nuts from the U-shaped bolt provided, attach the U-shaped bolt to the U-facing flange between first and second fins (near the front cover).
3. To attach the castor mounting plate to the radiator body, you should insert the threaded ends of the U bolt in the holes on the castor mounting plate.
4. Screw the wing nuts back to the U bolt and fasten the wing nut properly.

Note: do not over tighten, which may cause the damage of radiator flange.

5. Screw off spherical nut from the castor, align the shaft to the hole of the castor mounting plate, insert in, and screw on the spherical nut.
6. Repeat 2, 3, 4 and 5 on the rear of radiator for mounting of the rear castors. Note: the rear castors must be mounted between the end two fins.

Instructions for use

1. Before using the heater, make sure that it is on a flat and stable surface. Damage may occur if it is placed on an incline or decline.

2. Set all the controls to OFF position and insert the plug into a socket-outlet with well grounded. Be sure that plug fits firmly.
3. Rotate the thermostat knob clockwise to MAX position and switch the heater on as follow: the switch I for low heat, the switch II for medium heat and both switches on for high heat.
4. When your room reaches the desired temperature, now slowly rotate the thermostat knob counter clockwise until the pilot light goes out. The thermostat can now be left at this setting. As soon as the room temperature has dropped below the set temperature, the unit will switch it self on automatically until the set temperature has been reached again. In this way the room temperature remains constant with the most economical use of electricity.
5. If you want to change the room temperature setting, rotate the thermostat knob clockwise to raise the temperature, or counter clockwise to lower it.
6. This heater includes an overheat protection system that shuts off the heater when parts of the heater are getting excessively hot.
7. To completely shut the heater off, turn all the controls to OFF, and remove plug from the socket-outlet.

The following ratings can be achieved by using the power selection knob :

Model No.	Wattages
OFR 09	800W – 1200W – 2000W
OFR 11	1000W – 1500W – 2500W
OFR 13F	1000W – 1500W – 2500W + 400W (PTC Fan)

Maintenance

1. Always remove the plug from the socket-outlet and allow the radiator to cool down before clean the heater.
2. Wipe radiator with a soft damp (not wet) cloth.

Warning :

Do not immerse the heater in water.

Do not use any cleaning chemicals such as detergents and abrasives.

Do not allow the interior to get wet as this

could create a hazard.

3. To store away the heater, wind the cable round bobbin and store the heater in a clean dry place.
4. In case of malfunction or doubt, do not try to repair the radiator yourself, it may result in a fire hazard or electric shock.

Technical Data :

Power Supply : 230V ~ 50/60 Hz

Wattage :
(OFR 09/11/13F) 2000W / 2500W / 2900W

Morphy Richards products are intended for household use only

Morphy Richards has a policy of continuous improvement in product quality and design. The Company, therefore, reserves the right to change the specification of its models at any time.

Products & parts are indicative only, the actual product may differ.

morphy richards

Morphy Richards Ltd, Mexborough,
South Yorkshire, England, S64 8AJ