



Bellababy

Microwave Steam Sterilizer User Manual

BLA8913



Read all instructions BEFORE assembly and use of the product.
IMPORTANT! KEEP FOR FUTURE REFERENCE.

Register your product and get support at

USA: service-us2@bellababy-med.com
UK: service-eu@bellababy-med.com

Sterilizer size: Diameter: 27.8cm/10.94inch, Height: 16.8cm/6.61inch

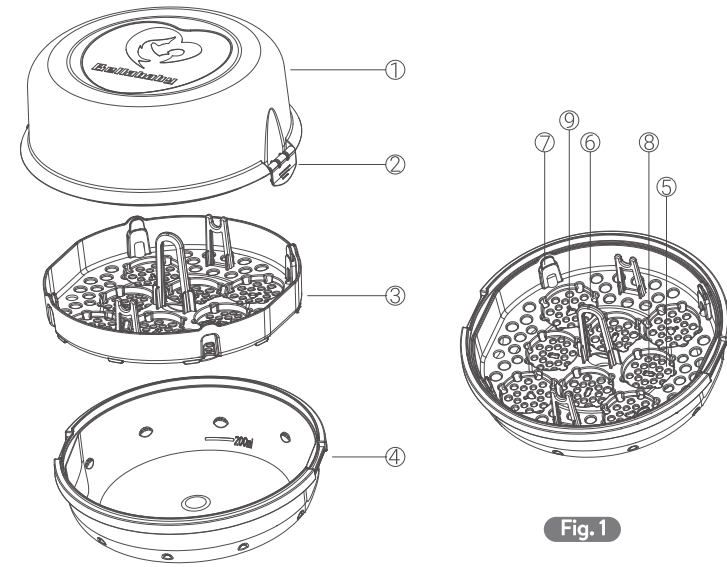


Fig. 1

After-sales Guarantee:

Congratulations on your purchase and welcome to Bellababy! To fully benefit from the support that Bellababy offers, register your product at service-us2@bellababy-med.com OR service-eu@bellababy-med.com. We will provide you with the following services:

1. Lifetime warranty, 180-day return or exchange (due to quality issues).
2. 24-hour after-sales consulting service.

General description (Fig. 1)

- | | | |
|-----------|--------------------|----------------------------|
| 1. Lid | 4. Base | 7. Dome cap holders |
| 2. Clips | 5. Bottle cavities | 8. Slots for large bottles |
| 3. Basket | 6. Teat cavities | 9. Slots for breast pumps |

Important

Read this user manual carefully before you use the microwave steriliser and save it for future reference.

Warning

- Let the steriliser cool down before you remove it from the microwave. Be careful when you move or open the steriliser, because the water in it can still be hot.
- Do not remove the lid from the steriliser immediately after sterilising, as the steam that comes out is very hot. Let the steriliser cool down, as steam can cause burns.
- Only use water without any additives.
- Always make sure that the base is filled with water when you use the steriliser in the microwave.
- Do not put bleach or other chemicals in the steriliser.
- Do not place metal items in the steriliser, as this may cause damage to the microwave.
- Do not overload the steriliser, otherwise the items are not sterilised properly.
- Only sterilise baby bottles and other items that are suitable for sterilisers. Check the user manual of the items you want to sterilise, to make sure they are suitable for sterilisers.
- This steriliser is intended for household use only.

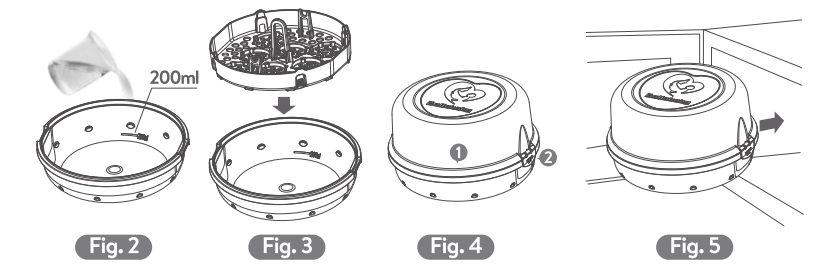
Caution

- Children should be supervised to ensure that they do not play with the steriliser.
- Always make sure the base is filled with 200ml water before you start sterilising.
- After each use, pour any remaining water out of the steriliser after the water has cooled down.
- Always let the steriliser cool down before you store it.
- Always wash your hands before you touch the sterilised items.
- Do not expose the steriliser to extreme heat or direct sunlight.
- Do not place the steriliser on a hot surface.
- If you use a combination oven (with grill function), make sure that the oven or grill is switched off and has cooled down before you put the steriliser in it.

Before first use

Before you use the steriliser for the first time, clean it thoroughly as described below.

1. Remove the basket from the base.
2. Fill a baby bottle or a measuring cup with exactly 200ml tap water and pour this into the base (Fig. 2).



The amount of water needs to be exactly 200ml. When the base contains too much water, the items will not be sterilised properly. When the base does not contain enough water, this can cause damage to the steriliser or microwave.

3. Place the basket in the base. (Fig. 3)
4. Put the lid on the steriliser (1) and push down the clips to lock the lid into place (2). (Fig. 4)
5. Place the steriliser in the microwave. (Fig. 5)

Note: Make sure that the microwave is clean and dry before you start sterilising.

Note: If you have a combination oven, make sure that the oven or grill is switched off and has cooled down before you put the steriliser in it.

6. Select the appropriate microwave wattage and time (see the table in chapter "Using the microwave steriliser") and let the microwave operate.
7. After the microwave has finished, open it and let the steriliser cool down before you remove it from the microwave.
8. Pull open the clips (1) and remove the lid (2).
9. Pour out the remaining water and rinse the base and basket thoroughly.

Preparing for use

Filling the basket

Before you put the items to be sterilised in the basket, clean them thoroughly in the dishwasher or clean them by hand with hot water and some washing-up liquid. Make sure you remove all milk residues.

Note: Make sure all items to be sterilised are completely disassembled and place them in the basket with their openings pointing downwards, to prevent them from filling with water.

Note: Do not stack the items too closely together. The steam has to be able to circulate around the items to ensure effective sterilisation.

There are several ways to fill the basket:

Four feeding bottles

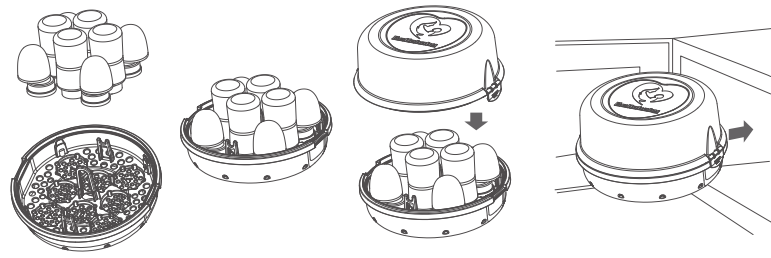


Fig. 6

1. Place the bottles upside down in the bottle cavities.
 2. Place the teats in the teat cavities.
 3. Place the screw rings loosely on top of the teats.
- Note: Larger screw rings only fit if placed in slanted position over the teats.
4. Place the dome caps in the dome cap holders.

Two large feeding bottles (330ml/11oz)

1. Insert the rim of the bottles into the slots for large bottles.
 2. Place the teats in the teat cavities.
 3. Place the screw rings loosely on top of the teats.
- Note: Larger screw rings only fit if placed in slanted position over the teats.
4. Place the dome caps in the dome cap holders.

Four storage cups and lids

1. Place the storage cups upside down in the basket.
2. Place the lids vertically around the bottles.

Two breast pumps and two feeding bottles

Do not place the electrical parts in the steriliser.

1. Fully disassemble the breast pump.
2. Insert the rim of the pump body in the breast pump slots in the bottom of the basket.
3. Place the bottles upside down in the bottle cavities.
4. Place the remaining non-electrical parts of the breast pump in any unobstructed space in the basket.

Note: Make sure steam can circulate around these parts.

Using the microwave steriliser

Only place items in the steriliser that are suitable for sterilising. Do not sterilise your bottle brush or items that are filled with liquid, e.g. teething rings filled with cooling fluid.

Note: Before you sterilise bottles and other items, clean them first.

1. Remove the basket from the base.
2. Fill a baby bottle or measuring cup with exactly 200ml tap water and pour this into the base. (Fig. 2)

The amount of water needs to be exactly 200ml. When the base contains too much water, the items will not be sterilised properly. When the base does not contain enough water, this can cause damage to the steriliser or microwave.

3. Place the basket in the base. (Fig. 3)
4. Place the items to be sterilised in the basket (see chapter "Preparing for use").
5. Put the lid on the steriliser (1) and push down the clips to lock the lid into place (2). (Fig. 4)
6. Place the steriliser in the microwave. (Fig. 5)

Note: Make sure that the microwave is clean and dry before you start sterilising.

7. Select the appropriate microwave wattage and time (see table below) and let the microwave operate.

Note: If you have a combination oven, make sure that the oven or grill is switched off and has cooled down before you put the steriliser in it.

Note: Do not exceed the sterilising time indicated in the table.

Microwave specifications

Wattage	Sterilising time	Cool-down time
1200W~1850W	2min.	2min.
850W~1100W	4min.	2min.
500W~800W	6min.	2min.

8. After the microwave has finished, open it and let the steriliser cool down before you remove it from the microwave.

Be careful, hot steam may come out of the microwave.

9. Remove the steriliser from the microwave.

Note: Make sure you keep the steriliser level to avoid leaking or spilling hot water.

Note: The sterilised items remain sterile for up to 24 hours in the microwave steriliser if you do not remove the lid.

10. Pull open the clips (1) and remove the lid (2).

11. Remove the bottles and other items from the basket. Use the tongs to remove the smaller items.

Be careful, hot steam may come out of the steriliser and the sterilised items may still be hot.

12. When you have removed the sterilised items, pour out the remaining water, rinse the base and basket thoroughly and wipe all parts dry.

Cleaning

Clean the lid, the basket and the base after every use, to prevent scale from building up.

Never use scouring pads, abrasive cleaning agents or aggressive liquids such as bleach, petrol or acetone to clean the steriliser.

Note: Let the steriliser cool down before you clean it.

1. Clean the steriliser parts in hot water with some washing-up liquid.

Note: You can also clean the steriliser parts in the dishwasher.

2. After cleaning, dry all parts properly.

Note: After cleaning, store the steriliser in a clean, dry place.



Bellababy

Manufacturer: Bellababy Medical Devices Inc
Address: 30 N Gould St Ste R Sheridan, WY 82801 USA
Importer: Bellababy Medical Devices Inc
Address: 30 N Gould St Ste R Sheridan, WY 82801 USA
Phone: 626-8100060
UK (REP) U.K. RUPEX LTD
326 CLEVELAND ROAD, LONDON E19 2AN
Email: service-eu@bellababy-med.com
Tel: +44 845 257 6082
Date of manufacture: 04,2022
MADE IN CHINA