

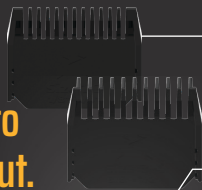
MANTACHI

by FAS alliance



User Guide

Say hello to the MANTACHI cut.



2 TRIM GUARDS

Four length settings: 1/8", 1/4", 3/8", or 1/2"

REPLACEABLE BLADE

Our ceramic blade is rust-resistant and easily slices through coarse or thick hair while helping reduce pulling, nicks, or scrapes to give you the smoothest cut.

SPOTLIGHT

4000k LED light to shine in the darkest situation

MULTI-CYCLE POWER SWITCH

When the Trimmer is on:

- Long press for 5 seconds to turn the spotlight on/off.

When the Trimmer is off:

- Short press to turn the trimmer on/off.
- Double press to turn the spotlight off/on.
- Triple press to activate/deactivate Travel Lock.

CHARGING & POWER INDICATOR

Featuring a high-capacity 1000mAh Li-ion battery, providing up to 3 hours of uninterrupted usage. Perfect for travel.



Fully charges within in 2 hours using the MANTACHI charger.

CHARGING DOCK

Holds the trimmer upright providing a more hygienic storage solution.

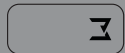
The Whole Package



Cleaning Brush



Charging Cable



Travel Case



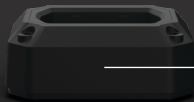
ASSISTANCE

For assistance, visit our website:

www.fasalliance.com or call

1-626-246-6568.

Online information is available 24 hours a day,
7 days a week.



Clipper Size

Haircut Length

0

1/16"



1

1/8"



2

1/4"



3

3/8"



4

1/2"



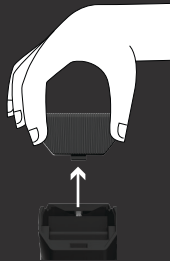
Keep it Sharp

- !** Ensure trimmer is turned off and removed from charging dock before replacing the blade. Do not use the trimmer if blade is damaged. Throw broken blades away immediately.



For optimal performance and hygienic operation, blade should be replaced every 3 months.

- 1 Push top of the blade with your thumb in the direction of the arrow to snap it out.
- 2 Put replacement blade into trimmer body with blade-side up and press it back until it snaps in place.



Keep it Clean



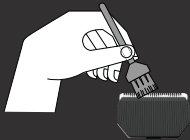
TURN OFF



UNPLUG

Ensure trimmer is turned off and removed from charging dock before cleaning or replacing blade modules. Do not use solvents to clean trimmer.

- 1 Remove blade. Using the cleaning brush, brush hair trimmings out of blade slots and in between blade teeth.



- 2 Rinse head under running water. shake off excess



- 3 Wipe with a soft cloth and store in dry place.

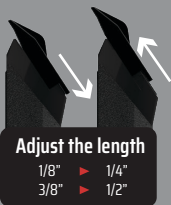
Your Personal Guard

ATTACH TRIM GUARD

Slide it over the front of the trimmer with the notches aligned with the grooves on the sides. Adjust the length of the guard by moving the notches up or down.

REMOVE TRIM GUARD

Push up from the bottom of the guard and slide it off the trimmer body.



Trim and Go

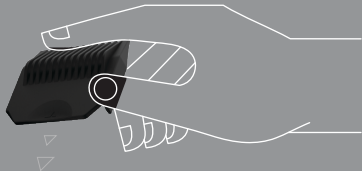
Without the trim guard

Trimming the short hair

Holding the appliance with the power switch facing outwards, trim by bringing the blade in contact with the skin.

Design precise lines

- 1 Place the blade at a right angle on the edge of where you want to make a precise line.
- 2 Move the blade away and down from the area you want to leave, and cut the remaining beard.



Taste of Power

Charge with or without dock



Do not use while charging.



- Charge trimmer only when needed. Do not overcharge.
- Do not plug in cable with wet hands.

CHARGING PORT

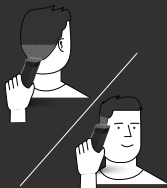
USB-C Charging Port



With the trim guard

To trim most effectively, move the trimmer against the hair growth direction. Make sure the surface of the comb always stays in contact with the skin.

Make well-controlled movements. Touch the hair lightly with the trimmer.



MANTACHI

Electric Beard & Hair Trimer



IMPORTANT SAFETY INSTRUCTIONS

Please save these instructions for future reference and read through them thoroughly before using the product. When operating an electric device, it is important to take basic safety precautions, such as the following:

DANGER

- Do not reach for a corded product that has fallen into water. Unplug it immediately.
- Do not place or store the product where it can fall or be pulled into a tub or sink. Do not immerse the product in water or other liquid.
- Always unplug this product from the electrical outlet immediately after use, except when the product is (re)charging.
- Unplug and remove the power supply cord from this product before cleaning.
- The batteries used in this product may present a fire or chemical burn hazard if mistreated. Do not disassemble, heat above 70°C, or incinerate.
- Do not attempt to open the product to remove/replace the built-in rechargeable battery.

WARNING

To reduce the risk of burns, fire, electric shock, or injury to persons:

- Close supervision is required when this product is used by, on, or near children, or persons with limited physical, sensory, or mental capabilities or invalids.
- This appliance is intended to cut hair and is capable of cutting skin if not used carefully.
- This product is for use on human hair only. Do not use the product for any other purpose.
- Use this product only for its intended use as described in this manual.
- Do not use attachments not specified by FAS Alliance INC.
- Never operate this product if it has a damaged power cord or dock, if it is not working properly, after it has been dropped or damaged, or dropped into water while plugged in. Contact FAS Alliance Inc. customer service to determine if the product is under warranty.
- Keep the appliance away from heated surfaces. Do not place anything heavy on or pinch the dock power cord. Keep the air openings free of lint, hair, and similar objects.
- Never drop or insert any object into any opening.
- Do not operate the appliance where aerosol (spray) products are being used or where oxygen is being administered.
- Always check cutters, cutting unit, and guards before using the product. Do not use the product if cutters, cutting unit, or guards are damaged, as injury may occur.
- Always attach the power cord to the product first, then to the power outlet. Be certain the plug is inserted firmly into the product up to the mark indicated on the plug. To disconnect, turn the product off then remove the power cord from the outlet.
- Never put the product in direct sunlight or store at a temperature above 70°C.
- Never immerse the product in water.

DISPOSAL

- This product contains a rechargeable lithium-ion battery which must be disposed of properly. Dispose of the battery safely according to your local environmental laws and guidelines.
- Do not attempt to open the product to remove/replace the built-in rechargeable battery.

STORAGE

- Be sure the product is turned off. Remove the cord from the outlet and the product before storing it in a safe, dry location where it will not be crushed, banged, or subject to damage.
- Do not wrap the cord around the product when storing.
- Store the cord in a safe location where it will not be cut or damaged.
- Always store the product, attachments, and power cord in a moisture-free area. Make sure the cord is disconnected from the product.

ONE-YEAR LIMITED WARRANTY

FAS Alliance Inc. warrants to the person who originally purchased the products listed below, that those products (except cutters and guards) will be free from defects in workmanship and materials for a period of one year from the date of purchase, subject to these conditions. To approve your warranty claim, the following conditions must be met:

- (a) you must have purchased the product from [FASalliance.com] or an authorized MANTACHI™ dealer;
- (b) you must provide proof of your product purchase date;
- (c) if requested, you must return the product to MANTACHI™; and
- (d) you must have used the product only as intended and in accordance with the product's instructions.

If a defect occurs under these circumstances and during the Warranty Period, we will repair or replace, at our discretion, the defective product or part. Normal wear and tear is not warranted. We may not be able to replace limited edition or discontinued products. If not, we will replace these products with an equivalent model based on availability. We may make changes to products and designs in the time you purchased your product and submitted a warranty claim. Products repaired or replaced under this warranty may or may not incorporate these changes.

IMPORTANT: This warranty does not cover damage resulting from an accident, misuse or abuse, lack of reasonable care, the affixing of any attachment not provided with the product, or loss of parts or subjecting the product to any but the specified voltage or batteries.

NO RESPONSIBILITY IS ASSUMED FOR ANY SPECIAL, INCIDENTAL OR CONSEQUENTIAL DAMAGES. In order to obtain warranty service, simply go to [info@fasalliance.com] for assistance and further guidance.