



**BREY-KRAUSE MANUFACTURING**  
 1209 W. LEHIGH ST., BETHLEHEM, PA 18018  
 PHONE: 610-867-1401 FAX: 610-866-1433  
 www.breykrause.com  
 Brey-Krause Mfg. reserves the right to make changes in design and/or materials without formal notice and without incurring obligation.

© BREY-KRAUSE MFG. 2022

DATE:

2/16/2023

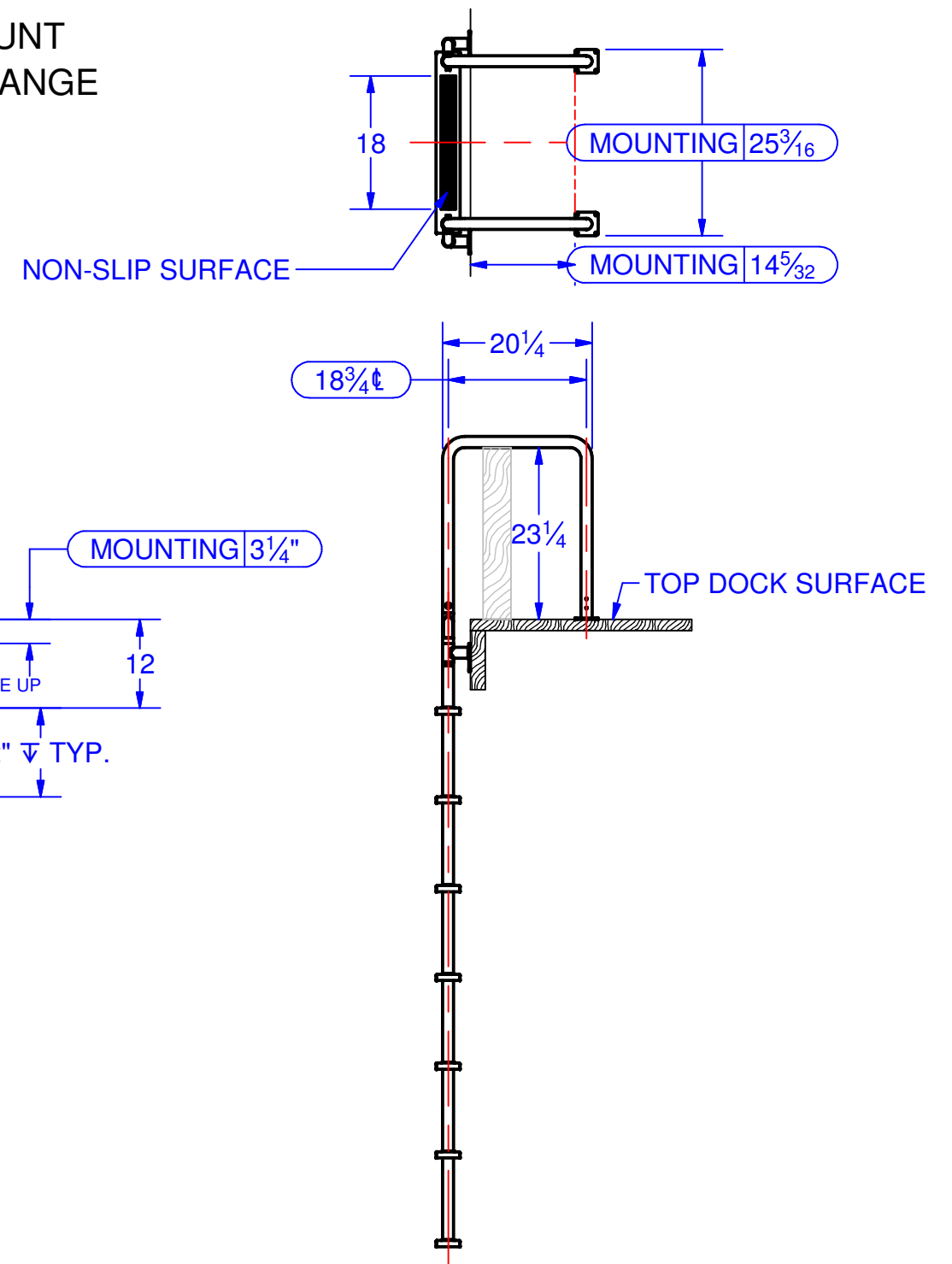
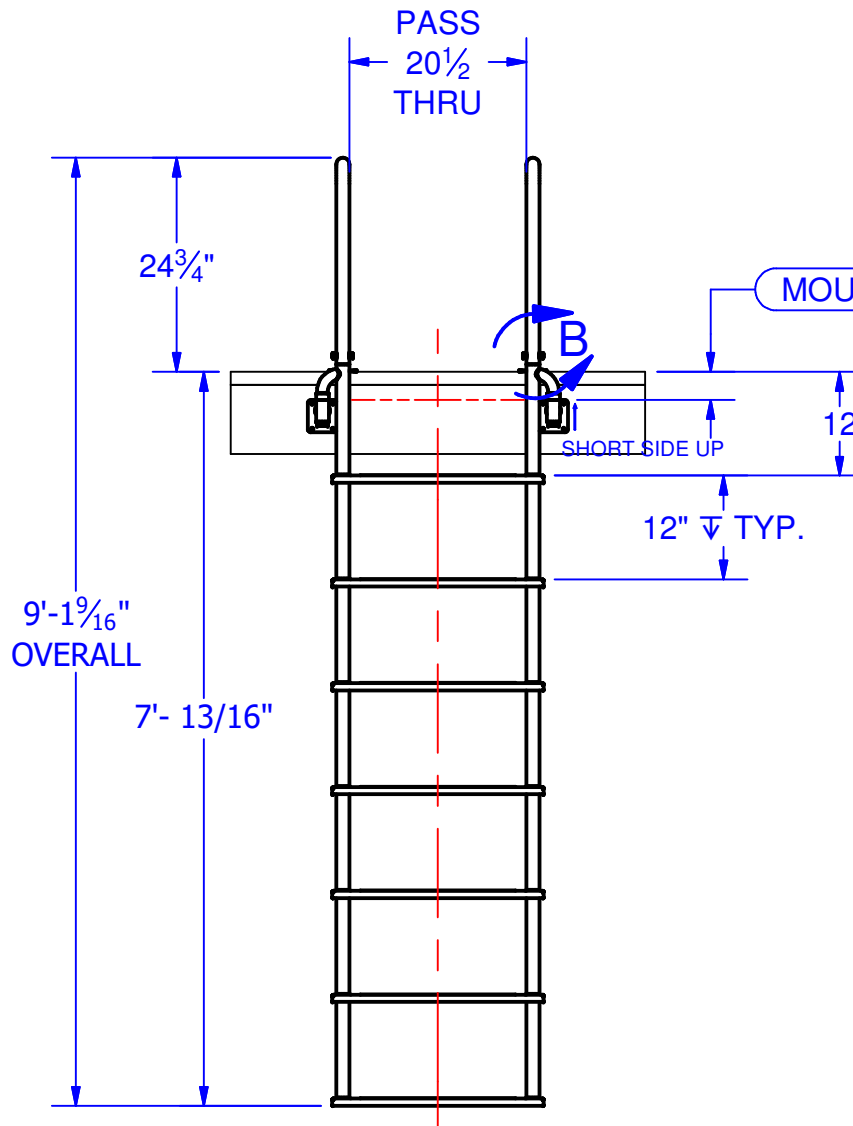
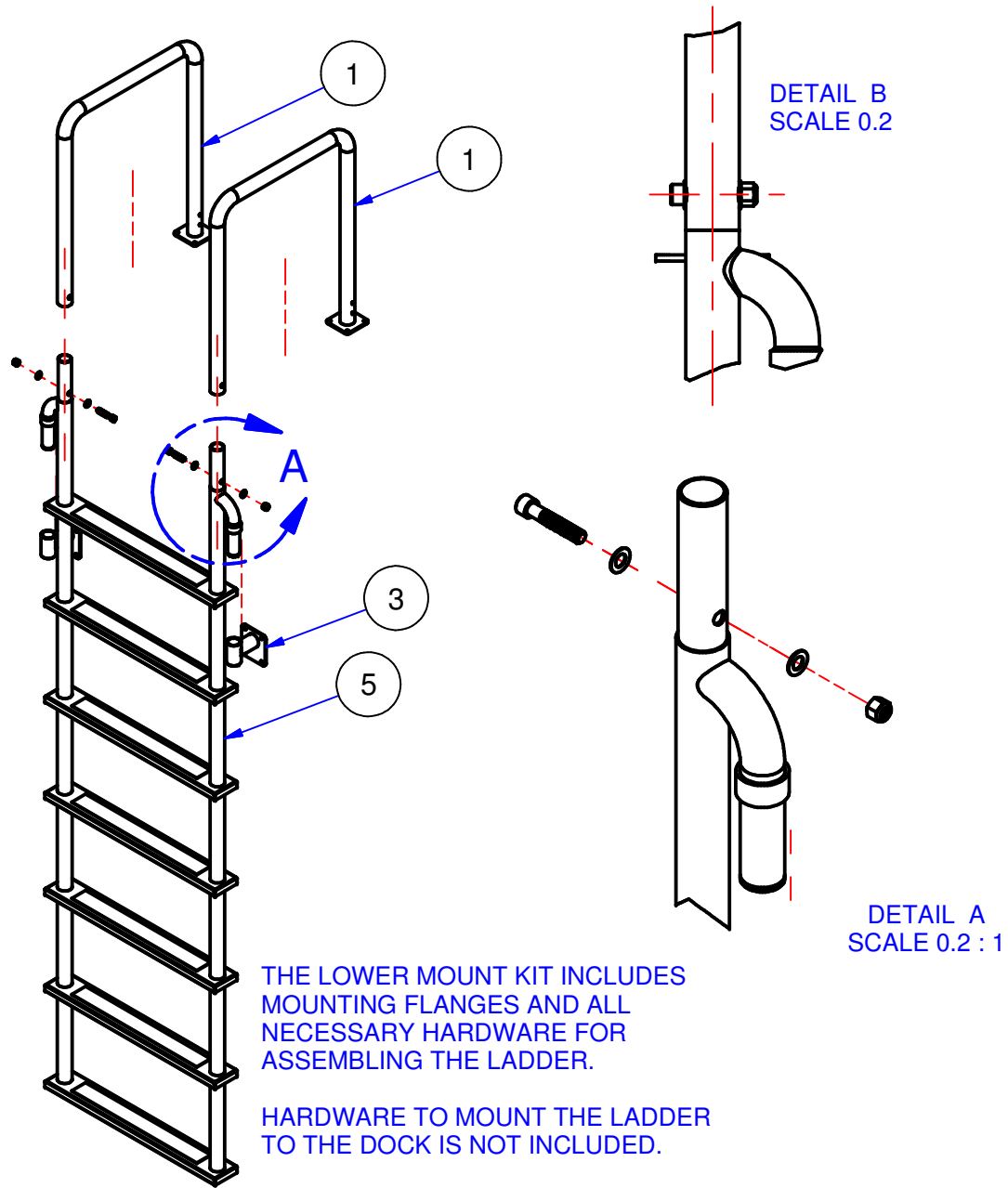
B

FILE: L-1228-LB\_Tech\_DATA

# TECHNICAL DATA

L-1228-LB

(7) STEP DOCK LADDER, FRONT MOUNT  
 18<sup>3</sup>/<sub>4</sub>" DEEP UPPER RAIL, WELDED FLANGE



Parts List			
ITEM	QTY	PART NUMBER	DESCRIPTION
1	2	L-1221-03-LB	18 3/4" UPPER RAILS, WELDED
3	1	L-1208-LB	LOWER MOUNTING KIT
5	1	L-1207-LB	LOWER LADDER, 7 STEP

**INSTALLATION:**

1. Install the (2) upper rail assemblies square to the top surface of the dock using the 14<sup>5</sup>/<sub>32</sub>" dimension from the front dock mounting surface, rail to rail 25<sup>3</sup>/<sub>16</sub>" apart to the outside of the flanges.
2. Slide the lower ladder fully into the upper rails and install the bolts. Use a scrap piece of wood (2x4) cut to 23<sup>1</sup>/<sub>4</sub>" to support the upper rails while you mount the lower ladder.
3. Slide the slip support flanges onto the lower ladder mounting posts, short end up. Use the 3<sup>1</sup>/<sub>4</sub>" dimension as a reference to maintain the ladder plumb. Check the ladder with a level and mount them to the front face of the dock. Check that all bolts are tight. (Note the mounting dimensions on the drawing)

**Operation:**  
 Only one person at a time should use the ladder.

The ladder is not to be used as a mooring point for boats or personal watercraft.

The mounting bolts used to secure the ladder flanges should be inspected periodically for tightness.

Assembled Ladder Weight: 52 Lbs.