

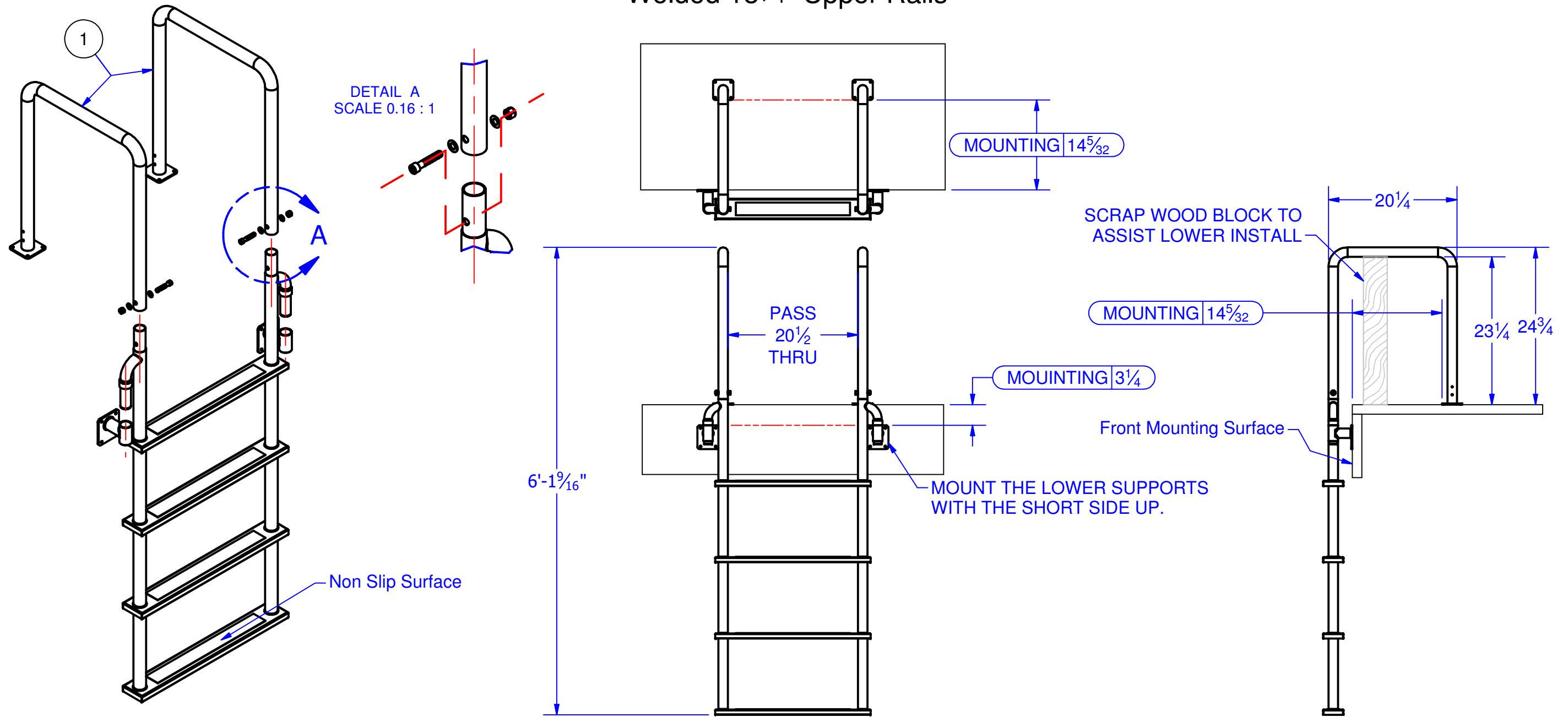


Brey-Krause Manufacturing
 1209 W. Lehigh St., Bethlehem, PA 18018
 Phone: 610-867-1401 Fax: 610-866-1433
 www.breykrause.com
 Brey-Krause Mfg. reserves the right to make changes in design and/or materials without formal notice and without incurring obligation.

Technical Data Sheet

© Brey-Krause Mfg. 2017

L-1220-LB 4 Step Front Mount Welded 18³/₄" Upper Rails



Parts List			
ITEM	QTY	PART NUMBER	DESCRIPTION
1	2	L-1221-03-LB	Upper Rail Assembly, Welded
2	1	L-1204-LB	4 Step Lower Ladder
3	1	L-1208-LB	Lower Mounting Kit

Installation:

1. Install the (2) Upper Rail Assemblies to the top surface of the dock using the 14⁵/₃₂" dimension from the front dock mounting surface.
2. Bolt the Lower Ladder to the Upper Rails with the supplied hardware. Use a scrap 2x4 cut to 23¹/₄" to support the upper rails while you mount the lower ladder supports.
3. Slide the Lower Mount Slip Assemblies onto the Lower Ladder Mounting Posts. This will properly locate them to mark the hole locations. Mount them to the front dock surface, checking that the ladder is plumb and square. Tighten all screws and bolts. Note the mounting dimensions in the front and side view.

The Brey-Krause Front Mount Dock Ladder is fabricated from 16 gauge 304 stainless steel tubing with a light buff satin finish.

It mounts to the dock using upper and lower mounting assemblies, each mount has (4) holes to accommodate 1/4" mounting hardware, supplied by the user. (16) bolts/screws will be needed. All other necessary hardware is supplied with the ladder.

The (4) 3" wide steps are 12" apart and topped with anti-slip material.