

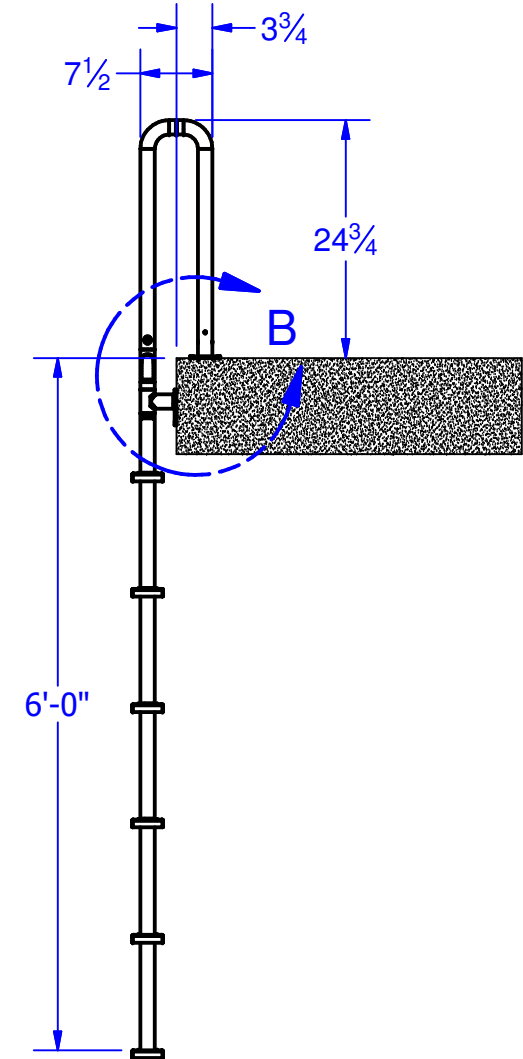
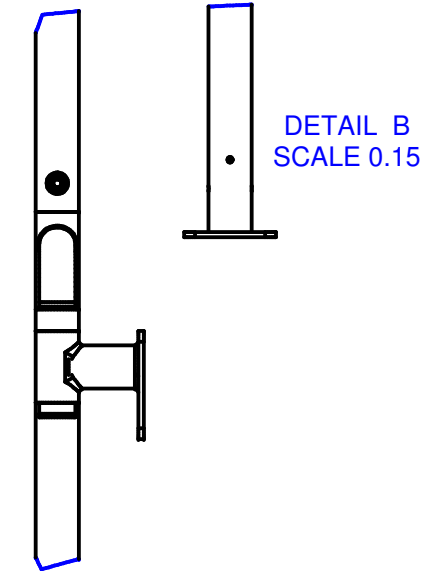
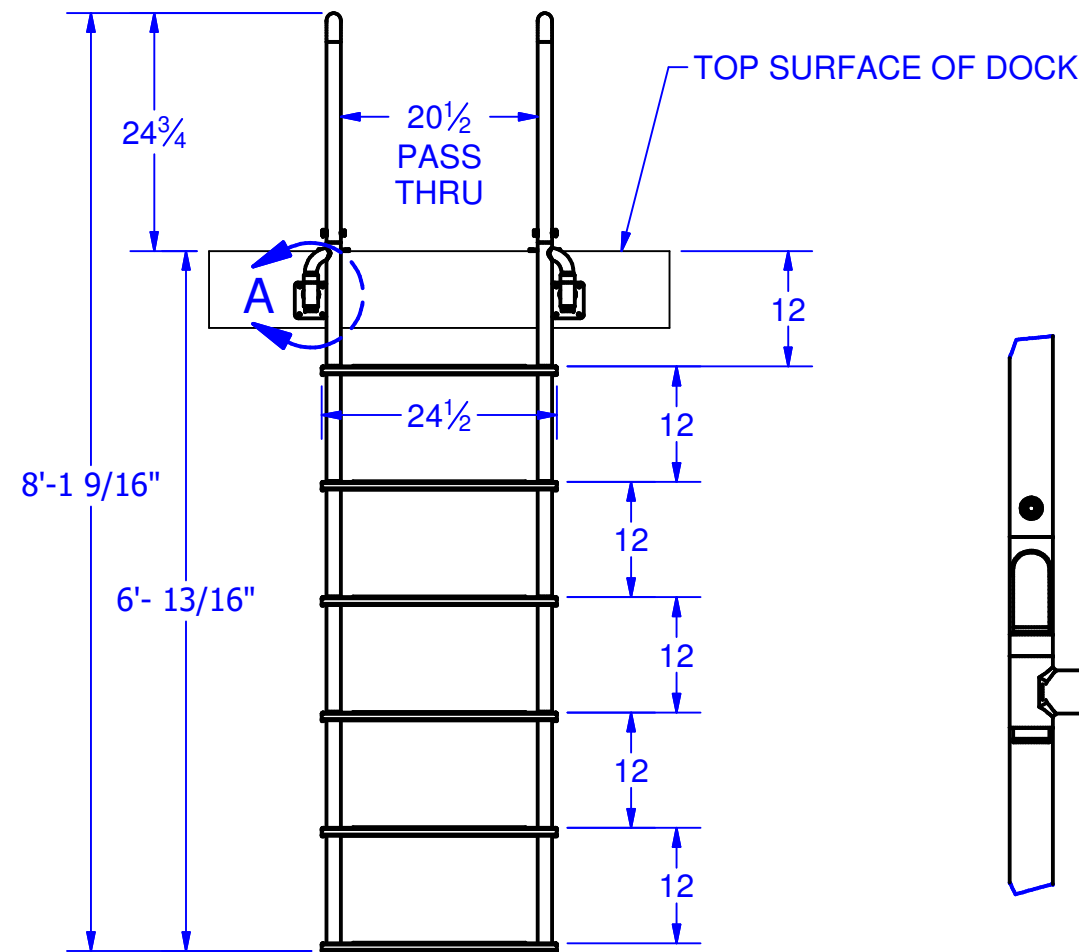
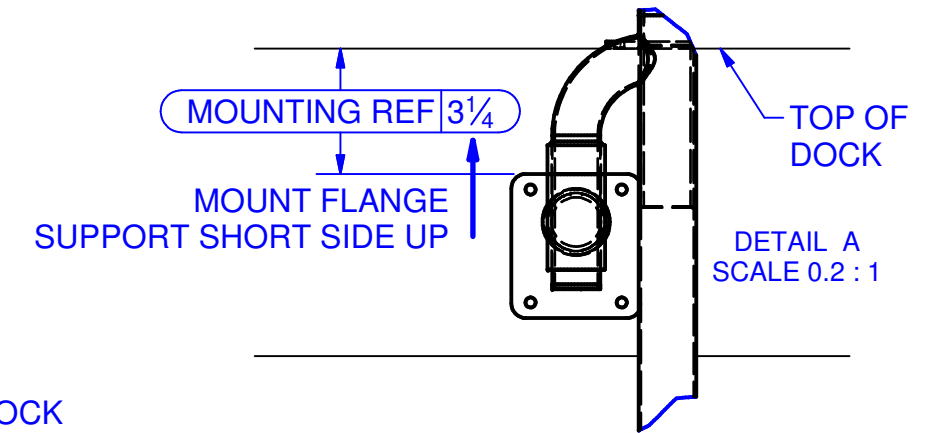
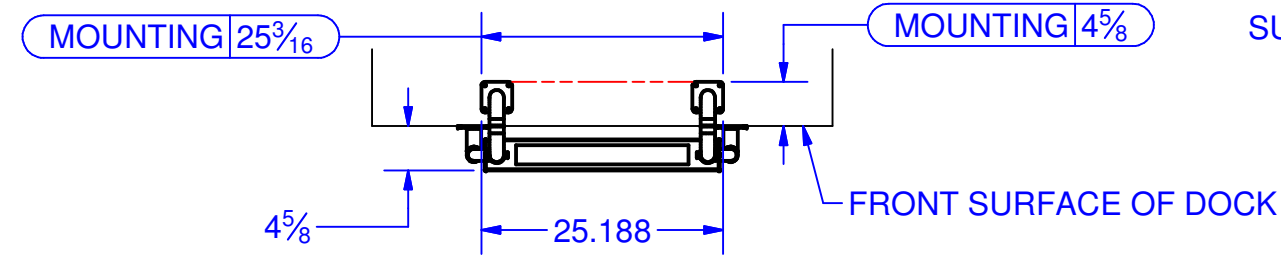
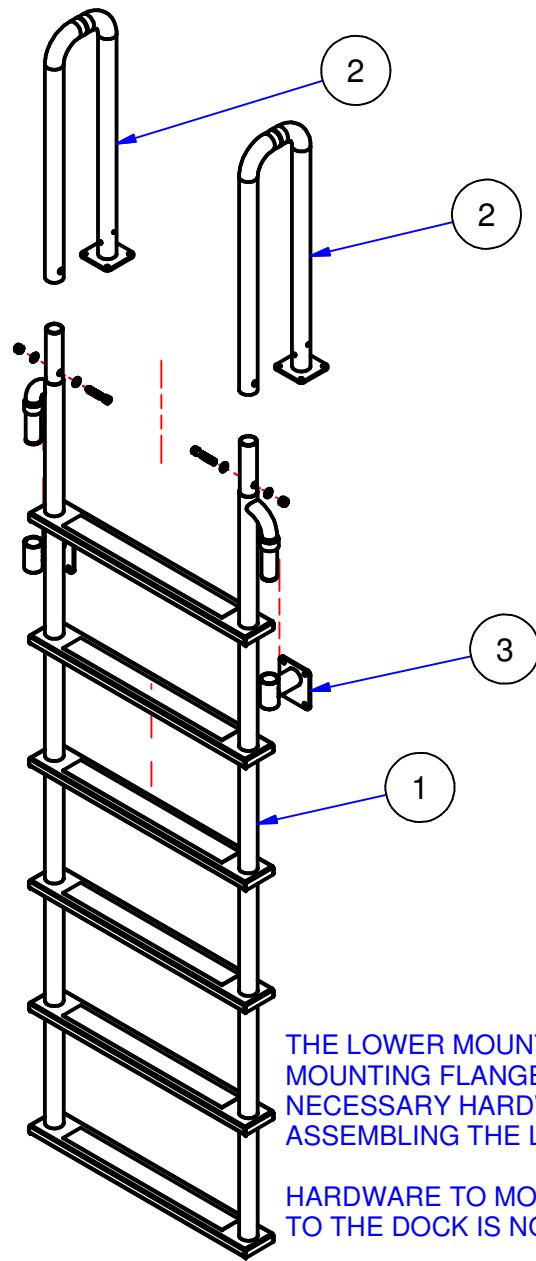


Brey-Krause Manufacturing
 1209 W. Lehigh St., Bethlehem, PA 18018
 Phone: 610-867-1401 Fax: 610-866-1433
 www.breykrause.com
 Brey-Krause Mfg. reserves the right to make changes in design and/or materials without formal notice and without incurring obligation.

Technical Data Sheet

L-1216-LB
 (6) STEP DOCK LADDER, FRONT MOUNT
 6" DEEP UPPER RAIL, WELDED FLANGE

Parts List		DESCRIPTION
ITEM	QTY	PART NUMBER
1	1	L-1206-LB
2	2	L-1210-06-LB
3	1	L-1208-LB



Recommendation for Steel Stud Anchors for Concrete

(not supplied with ladder).

Zinc Yellow-Chromate Plated, $\varnothing 1/4"$, 1³/₄ long, 1¹/₄" minimum insertion depth. McMaster-Carr #98880A111 or equivalent. This is a minimum recommendation; ladder must be mounted per local building code requirements.

Installation:

- 1) Bolt the upper hand rails to the lower ladder, position the ladder in the desired location on the dock. Slide the slip supports onto the lower ladder and mark the screw hole positions for the slip supports.
- 2) Drill and mount the slip supports (Item 3) to the dock, assuring the proper location. Mount (Item 3) short side up for easier fastener installation. (See Detail A) Slide the ladder onto the slip supports, check location and assure the ladder is plumb.
- 3) Mark, drill and mount the bolts for the upper hand rail flanges.

Operation:

Only one person at a time should use the ladder.
 The ladder is not to be used as a mooring point for boats or personal watercraft.
 The mounting bolts used to secure the ladder flanges should be inspected periodically for tightness.
 Assembled Ladder Weight: 45 Lbs.