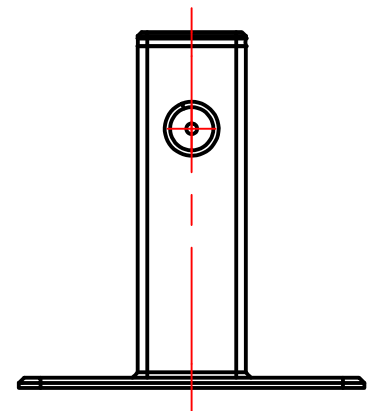
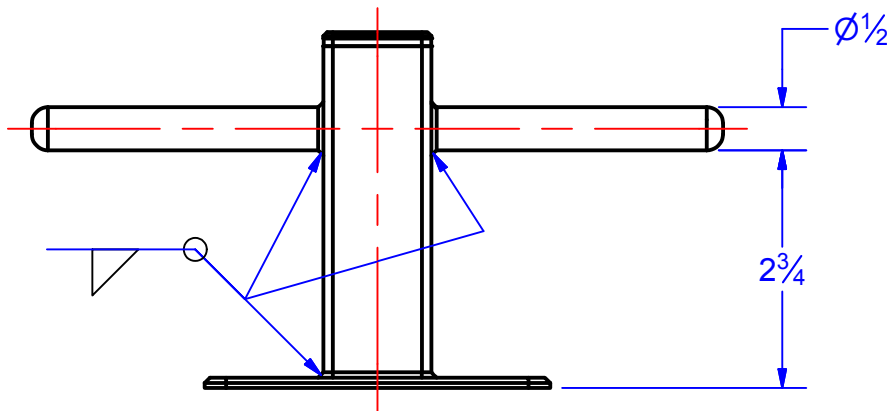
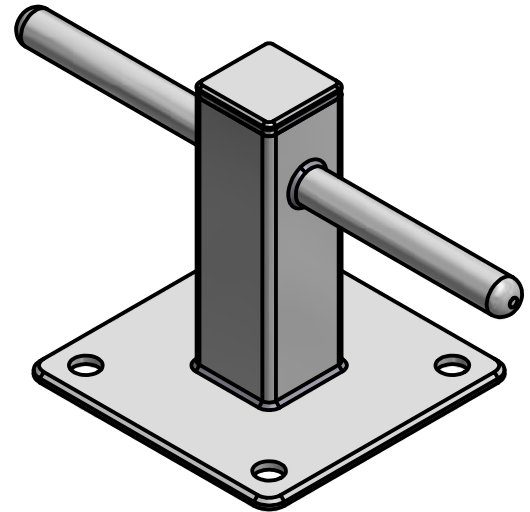
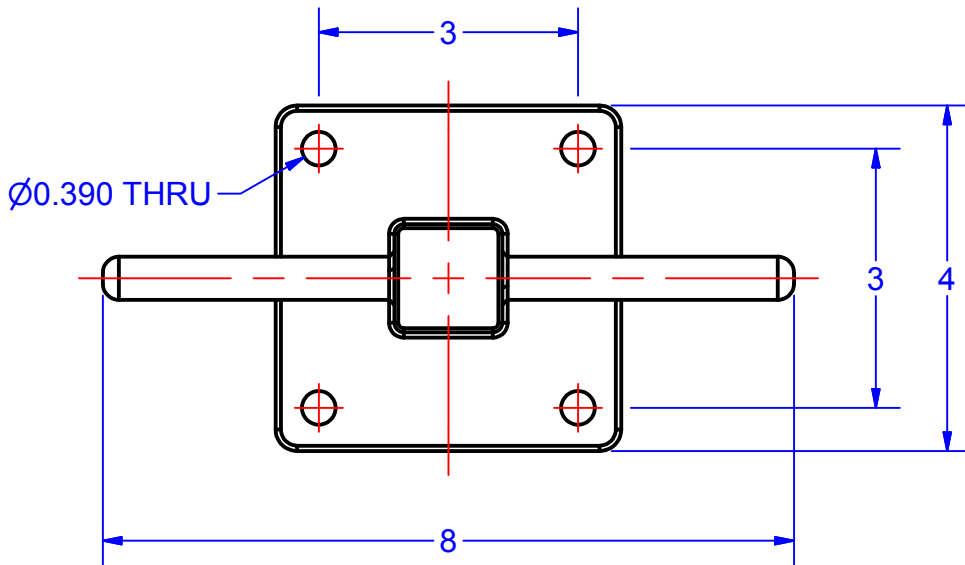




# TECHNICAL DATA SHEET

L-0715-SS  
8" DOCK BOLLARD

|                                |                     |
|--------------------------------|---------------------|
| DRAWN BY:<br>K. R. Reinhart    | 5/7/2014            |
| TOLERANCES:                    |                     |
| FRACTION : $\pm \frac{1}{8}$ " | X.XX : $\pm 0.015$  |
| $\angle$ : $\pm 1^\circ$       | X.XXX : $\pm 0.005$ |



### CONSTRUCTION:

$\square 1\frac{1}{4}$ " x 0.065 WALL 304 STAINLESS STEEL TUBING. THE MOUNTING PLATE IS 11 GAUGE 304 STAINLESS. ALL PARTS ARE TIG WELDED COMPLETE AND PASSIVATED FOR CORROSION PROTECTION. OVERALL FINISH IS #4 SATIN.

### INSTALLATION:

CLEAT CAN BE SURFACE MOUNTED TO DOCK OR POST WITH (4) BOLTS OR SCREWS (NOT PROVIDED). SEE DRAWING FOR HOLE LOCATIONS.

### OPERATION:

IS CONVENTIONAL, CLEAT CAN ALSO BE ORDERED WITH POLYESTER POWDER COATING FOR AREAS WHERE HIGH VISIBILITY IS DESIRABLE.

POWDER COATED CLEAT IS PART NUMBER L-0715-PC (SPECIFY COLOR). STANDARD COLORS AVAILABLE ARE SAFETY YELLOW AND WET WHITE. OTHER COLORS ARE AVAILABLE VIA SPECIAL ORDER.