

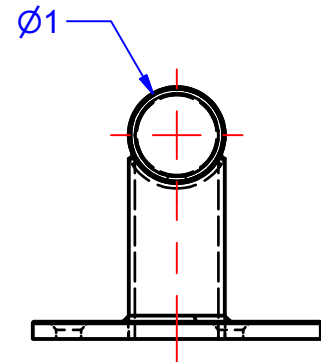
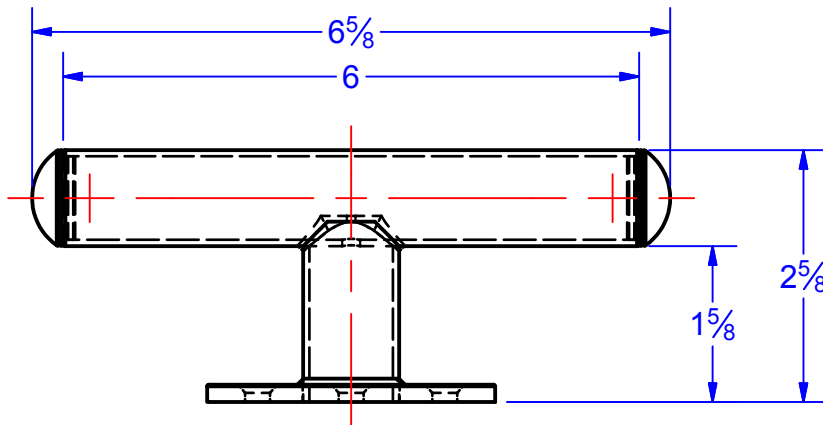
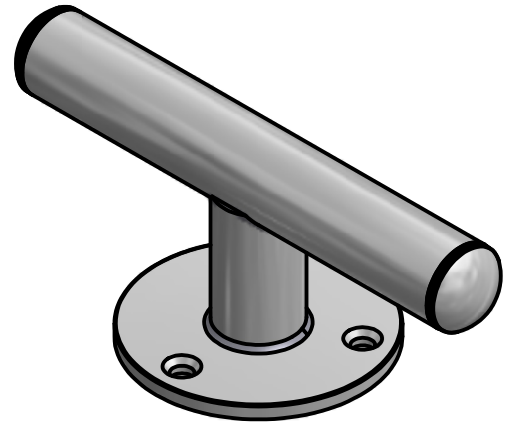
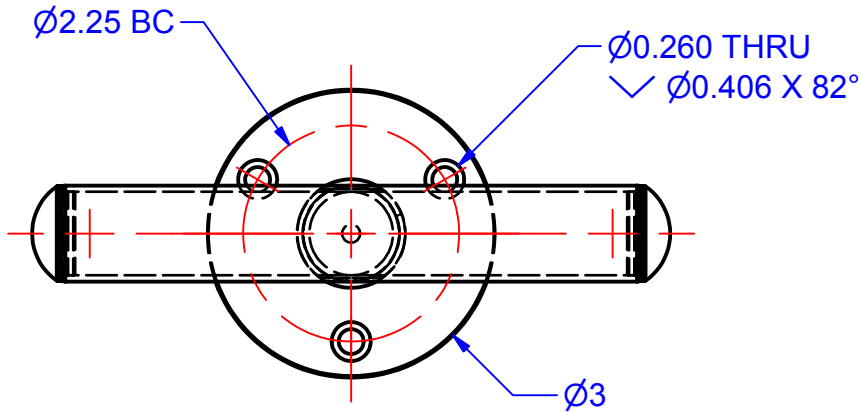


TECHNICAL DATA SHEET

L-0706-SS
6" DOCK CLEAT

DRAWN BY:
K. R. Reinhart 5/5/2014

TOLERANCES:
FRACTION : $\pm \frac{1}{8}$ " X.XX : ± 0.015
 \sphericalangle : $\pm 1^\circ$ X.XXX : ± 0.005



CONSTRUCTION:

Ø1" x 0.065 WALL 304 STAINLESS STEEL TUBING. THE MOUNTING FLANGE IS STAMPED FROM 7 GAUGE 304 STAINLESS. END CAPS ARE 303 STAINLESS STEEL. ALL PARTS ARE TIG WELDED COMPLETE AND PASSIVATED FOR CORROSION PROTECTION. OVERALL FINISH IS #4 SATIN.

INSTALLATION:

CLEAT CAN BE SURFACE MOUNTED TO DOCK OR POST WITH (3) FLAT HEAD SCREWS (NOT PROVIDED). SEE DRAWING FOR SCREW LOCATIONS.

OPERATION:

IS CONVENTIONAL, CLEAT CAN ALSO BE ORDERED WITH POLYESTER POWDER COATING FOR AREAS WHERE HIGH VISIBILITY IS DESIRABLE.

POWDER COATED CLEAT IS PART NUMBER L-0706-PC (SPECIFY COLOR). STANDARD COLORS AVAILABLE ARE SAFETY YELLOW AND WET WHITE. OTHER COLORS ARE AVAILABLE VIA SPECIAL ORDER.