

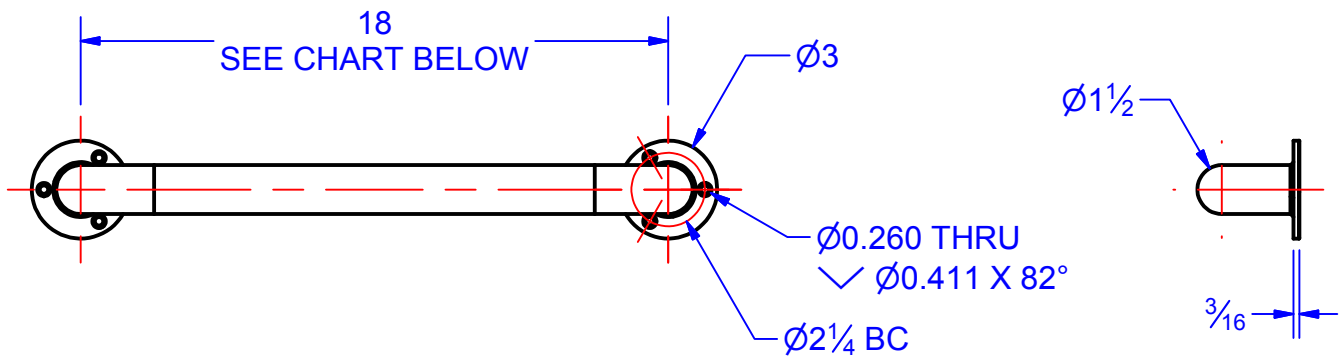
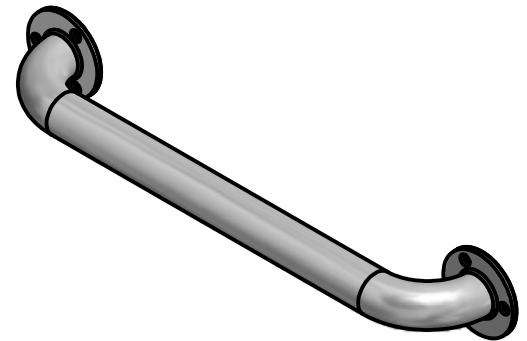
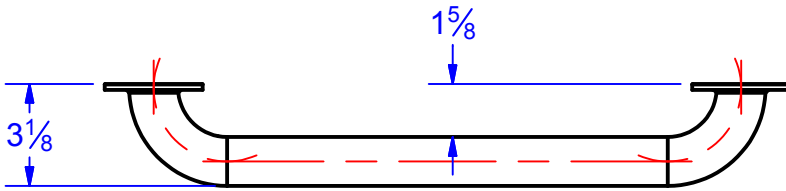


TECHNICAL DATA SHEET

DOCK GRAB BAR
D-75XX-SS-TOP

DRAWN BY:
K. R. Reinhart 5/12/2014

TOLERANCES:
FRACTION : $\pm \frac{1}{8}$ " X.XX : ± 0.010
 \angle : $\pm 1^\circ$ X.XXX : ± 0.005



CONSTRUCTION:

$\varnothing 1\frac{1}{2}$ " x 0.049 WALL 304 STAINLESS STEEL TUBING. MOUNTING FLANGES ARE STAMPED FROM 7 GAUGE 304 STAINLESS. ALL PARTS ARE TIG WELDED ON THE TOP SIDE AND PASSIVATED FOR CORROSION PROTECTION. OVERALL FINISH IS #4 SATIN.

INSTALLATION:

THE BAR CAN BE SURFACE MOUNTED TO DOCK OR POST WITH (3) $\frac{1}{4}$ " FLAT HEAD SCREWS (NOT PROVIDED). SEE ABOVE FOR SCREW LOCATIONS.

GUIDE SPECIFICATION:

USE THE CORRECT PART NUMBER BELOW FOR THE DESIRED BAR LENGTH.

TAB CHART

PART NUMBER	BAR LENGTH
D-7510-SS-TOP	12"
D-7511-SS-TOP	16"
D-7512-SS-TOP	18"
D-7513-SS-TOP	24"
D-7515-SS-TOP	42"
D-7516-SS-TOP	36"
D-7517-SS-TOP	48"
D-7521-SS-TOP	30"