

BEAUTIFULLY
SIMPLE

BRING YOUR IDEAS TO LIFE

COUNTLESS
POSSIBILITIES

Kitch™

BS25DRDOCE & BS25DR2DOCE

MODULAR CABINET SYSTEMS
100% --- CANADIAN MADE

Inspect the Product

A friendly reminder to unwrap and inspect your Kitch products before assembly and installation. You may find a blemish, but no sweat! Our KitchBOX parts are universal, so just rotate the blemish toward the back of your cabinet.

If a remake is required, please take photos of any damages along with the label on the piece and email them to hello@mykitch.ca. We'll review and advise what the next steps will be for you. **You have 15 DAYS from receiving your products to report these to us.**

Tools Required

- #2 Robertson (square drive) screwdriver or screwdriver bit.
- *Hardware needed:*



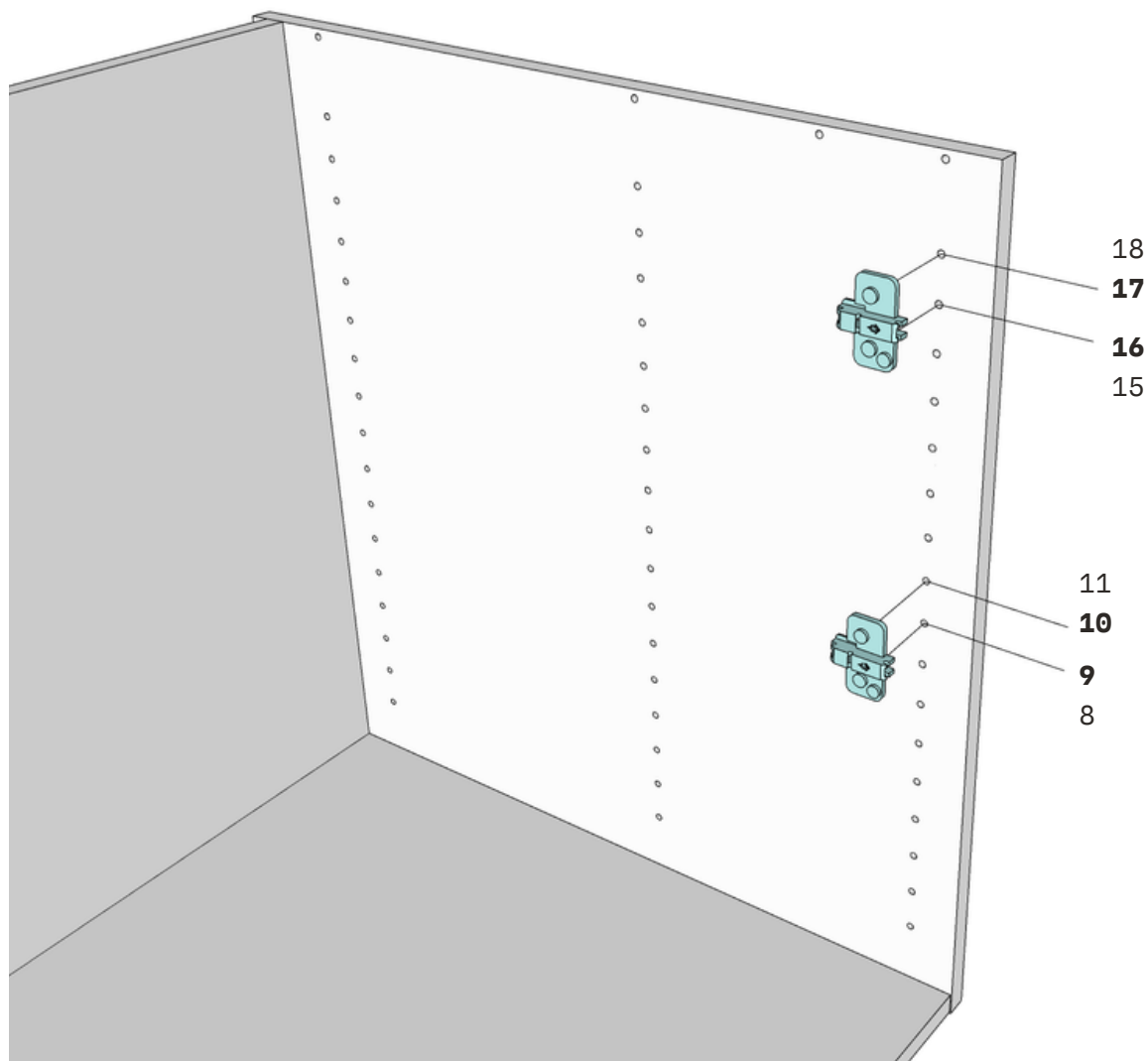
Before Assembly

Before you follow the steps below to assemble your configuration, you will need to assemble the BaseBOX and DrawerBOX by following the QR code below.



CLICK OR SCAN

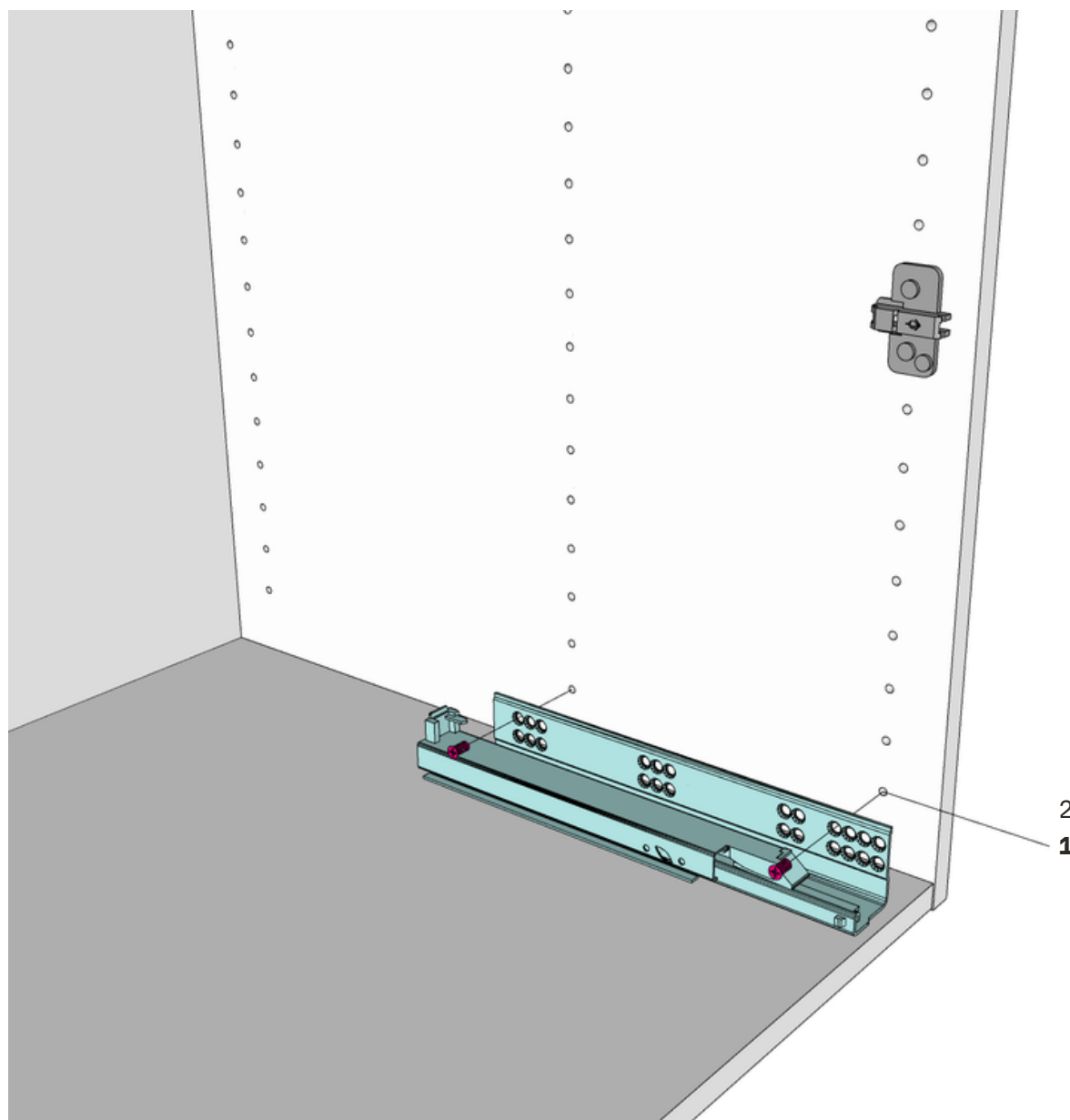
Step 1



Insert the hinge plates into holes 9 & 10 and 16 & 17 of the side Gable (KPGA).

Helpful hint: The arrow on the hinge plate should point toward the front of the cabinet.

Step 2

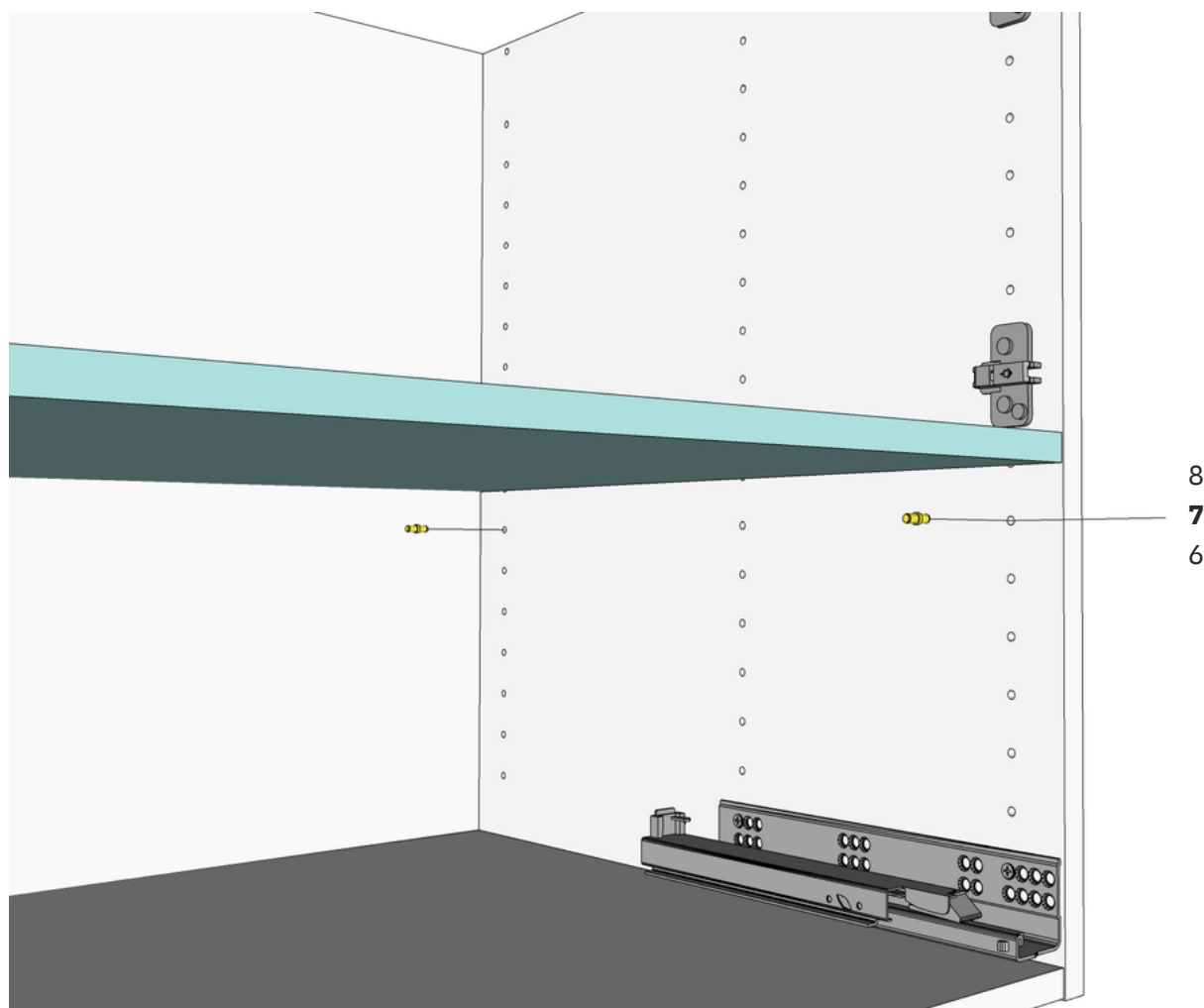


Align each Drawer Guide with the corresponding hole numbers on each Gable (KPGA). With the **Drawer Guide Screws** provided, screw through the Drawer Guide holes 4 & 12 into the cabinet gable.

Hardware needed:

4

Step 3

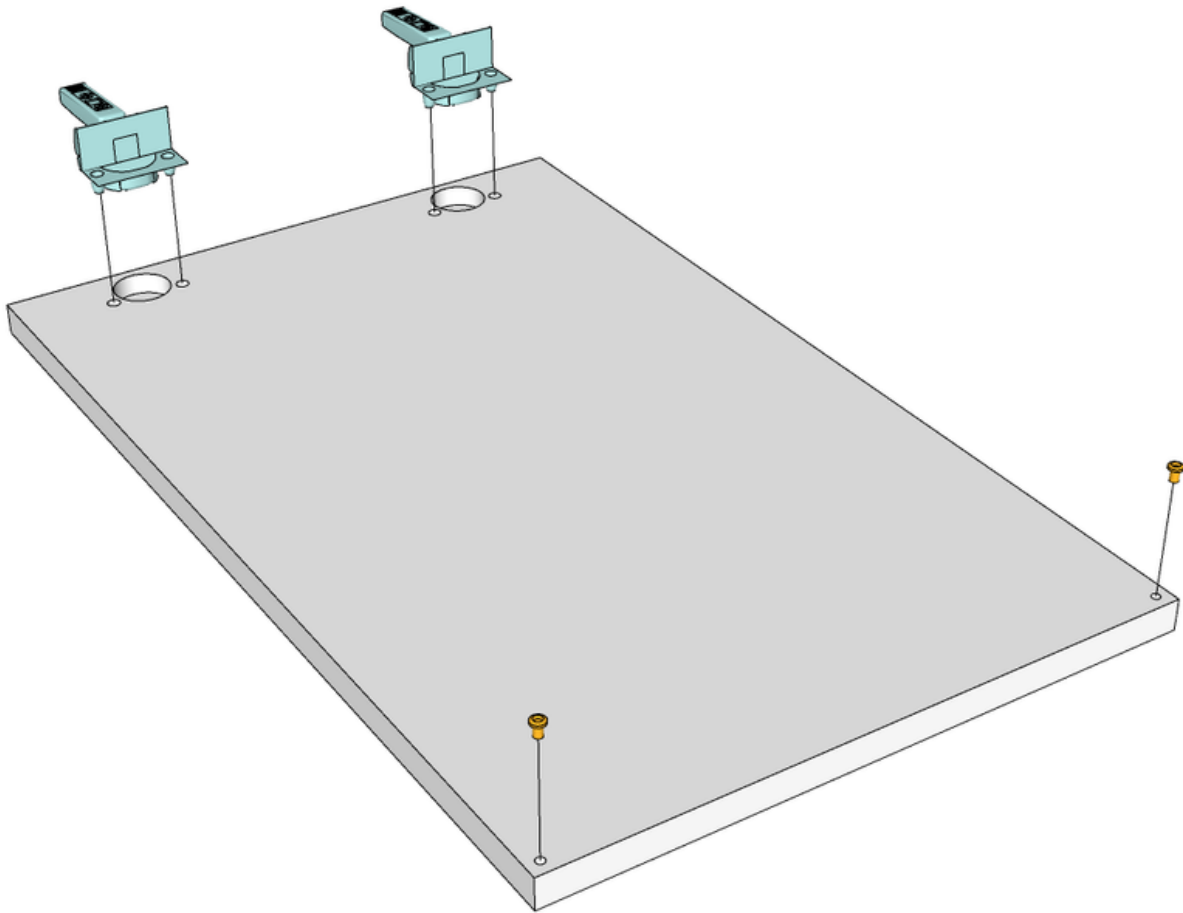


Insert the **Adjustable Shelf Pins** into hole 7, front and back, then, place the Shelf (KPAS) on top of the pins.

Hardware needed:

5

Step 4

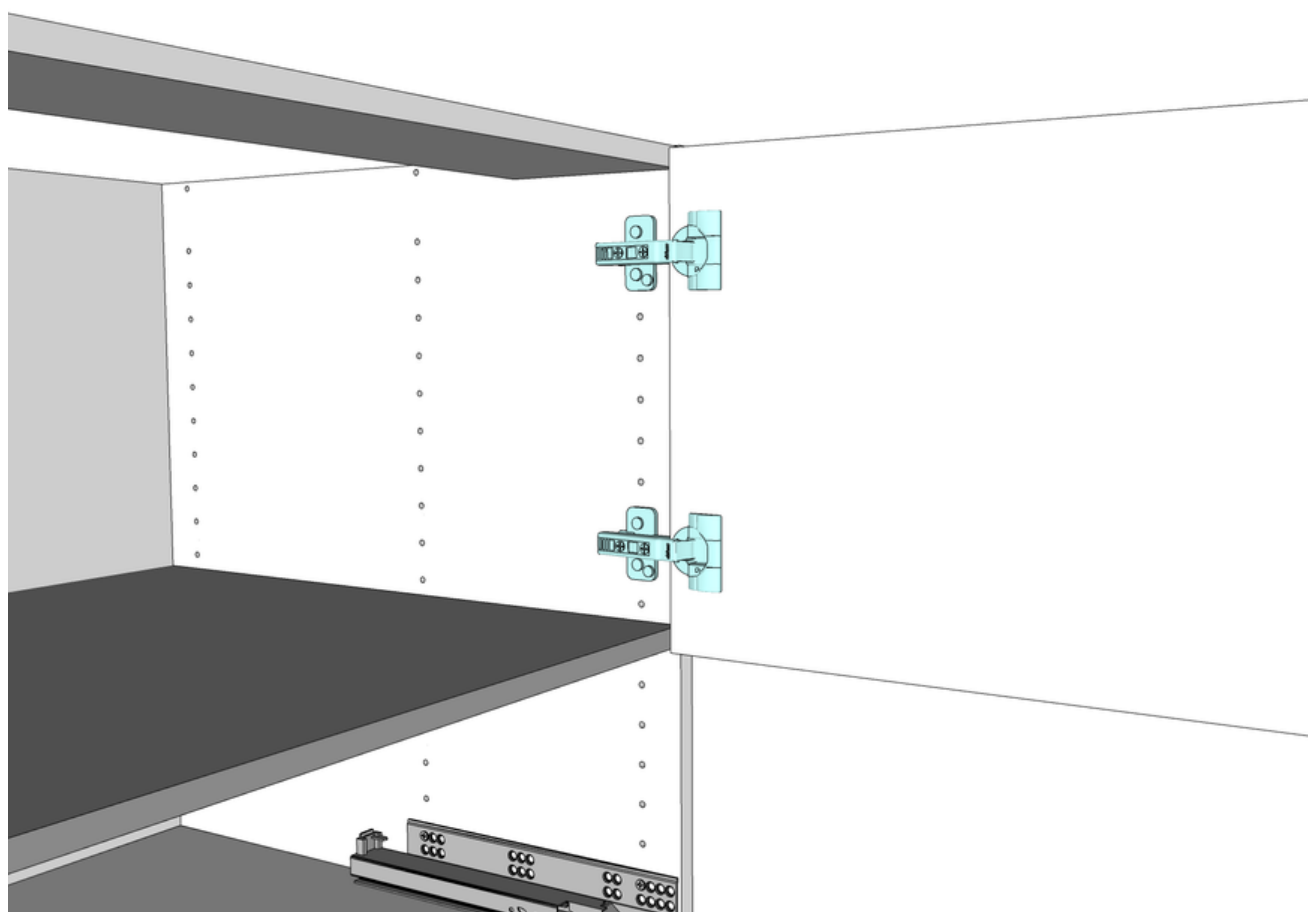


Attach the hinges to the Door/s (KPDO) and insert the bumpers.

Hardware needed:

6

Step 5



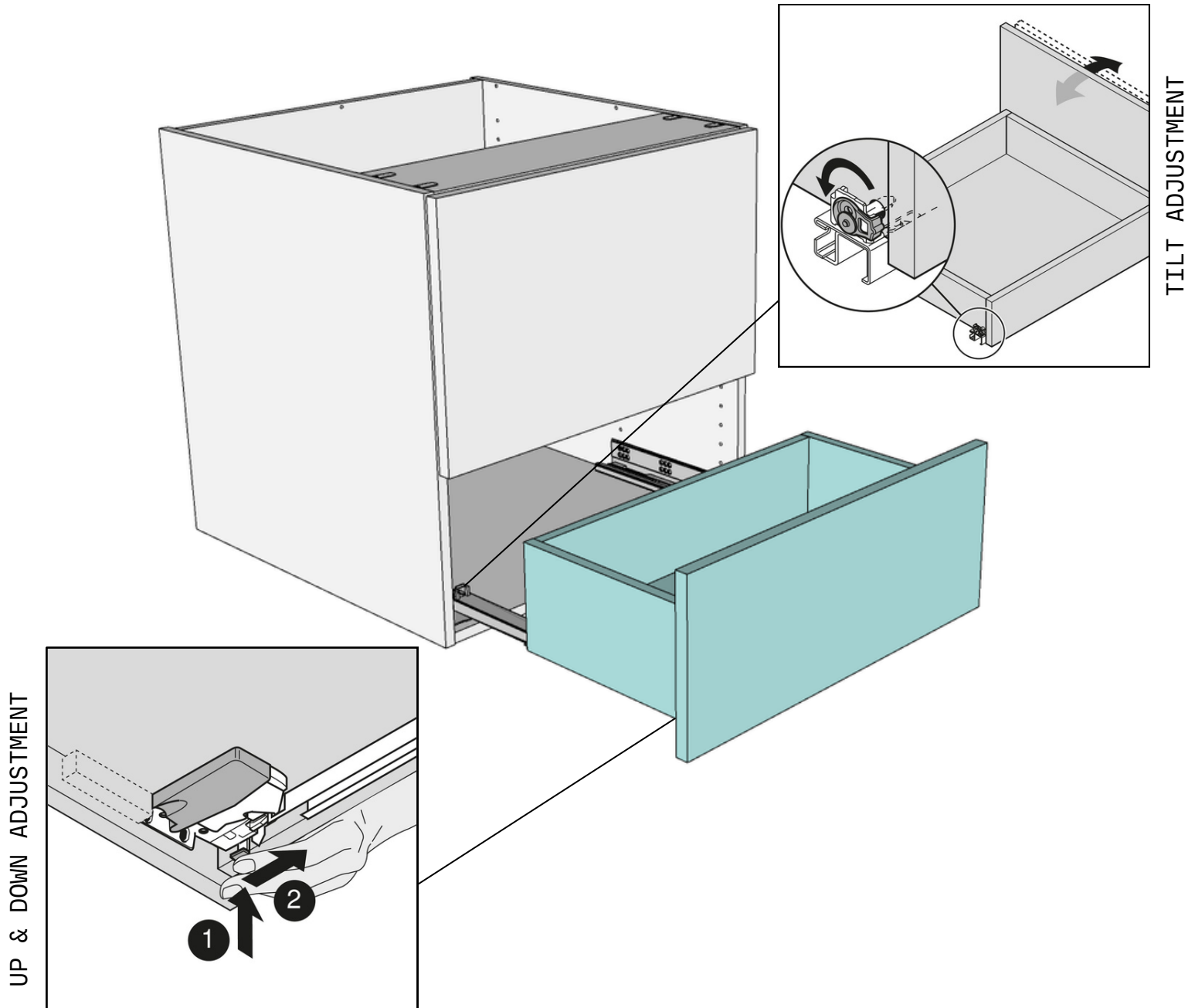
Attach the Door/s (KPDO) onto the hinge plates on the Gable (KPGA) and click into place. Adjust the door/s as required.

HINGE ADJUSTMENT



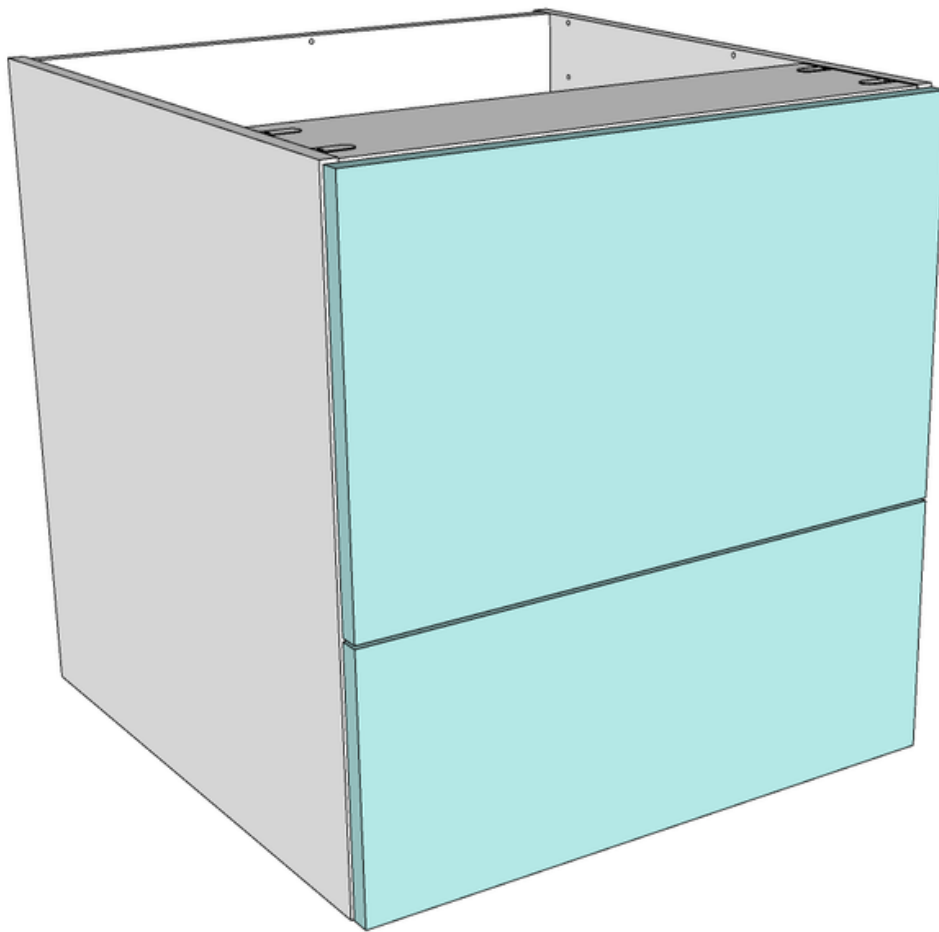
CLICK OR SCAN

Step 6



Pull the Drawer Guides out from the cabinet and align the DrawerBOX onto each of the guides. Push back into place until you hear a "click" sound.

Step 7



Your BaseBOX cabinet configuration is now assembled.