

BEAUTIFULLY
SIMPLE

BRING YOUR IDEAS TO LIFE

COUNTLESS
POSSIBILITIES

Kitch™

BR30J

MODULAR CABINET SYSTEMS
100% --- CANADIAN MADE

Inspect the Product

A friendly reminder to unwrap and inspect your Kitch products before assembly and installation. You may find a blemish, but no sweat! Our KitchBOX parts are universal, so just rotate the blemish toward the back of your cabinet.

If a remake is required, please take photos of any damages along with the label on the piece and email them to hello@mykitch.ca. We'll review and advise what the next steps will be for you. **You have 15 DAYS from receiving your products to report these to us.**

Tools Required

- Cordless drill with adjustable torque settings.
- Kitch Assembly Tool.
 - *Recommended drill settings:* low speed, with torque setting at 50% of capacity, maximum torque of 2.5Nm (1.8ft. lbs).
- #2 Robertson (square drive) screwdriver or screwdriver bit.
- *Hardware needed:*



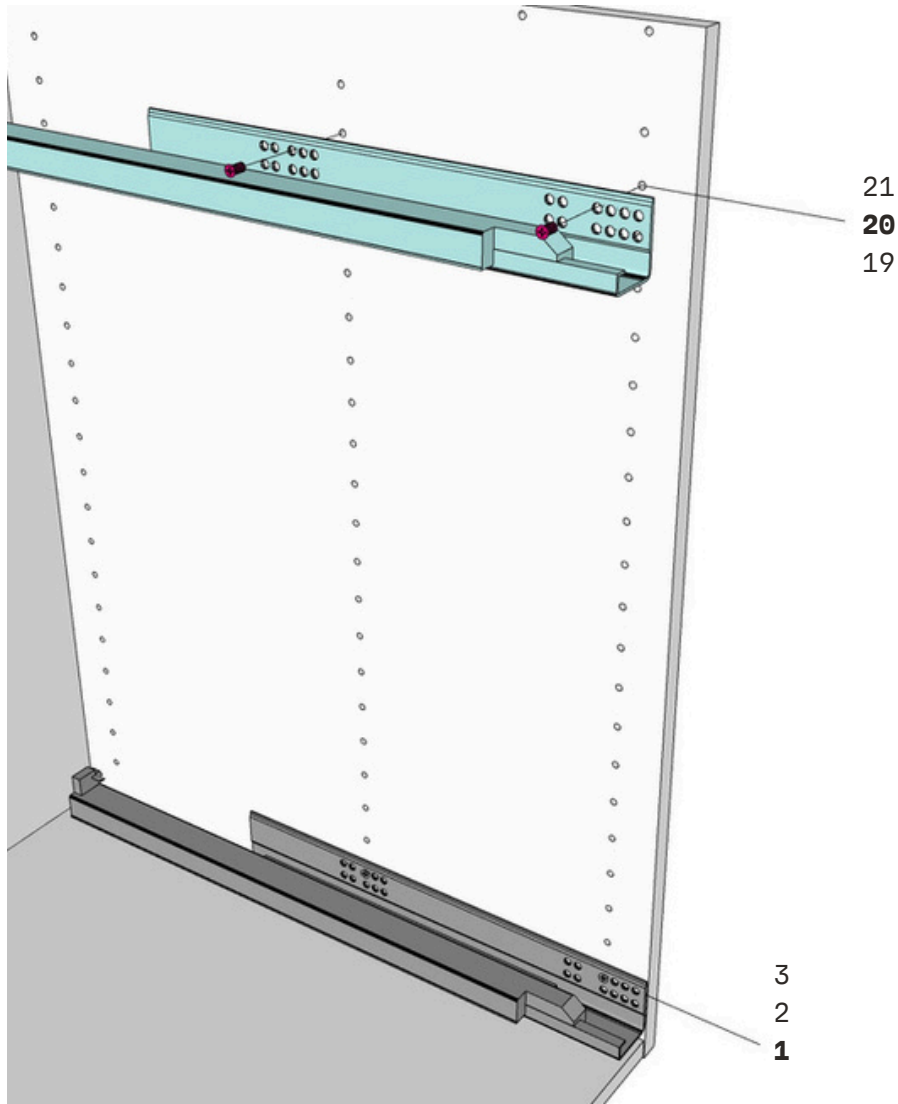
Before Assembly

Before you follow the steps below to assemble your configuration, you will need to assemble the BaseBOX and Inner DrawerBOX by following the QR code below.



CLICK OR SCAN

Step 1

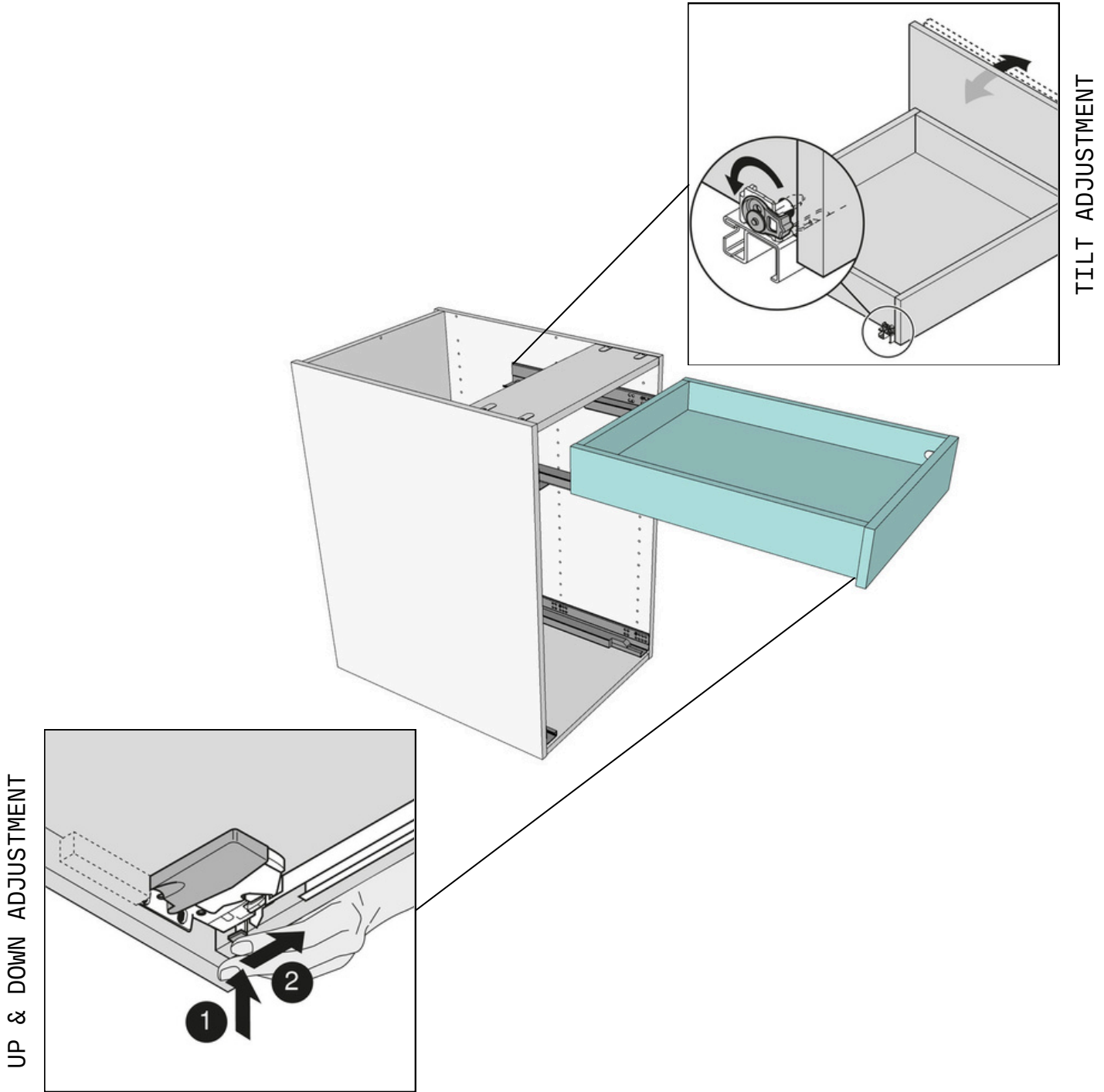


Align each Drawer Guide with the corresponding hole numbers on each Gable (KPGA). With the **Drawer Guide Screws** provided, screw through the Drawer Guide holes 4 & 9 into the cabinet gable.

Hardware needed:

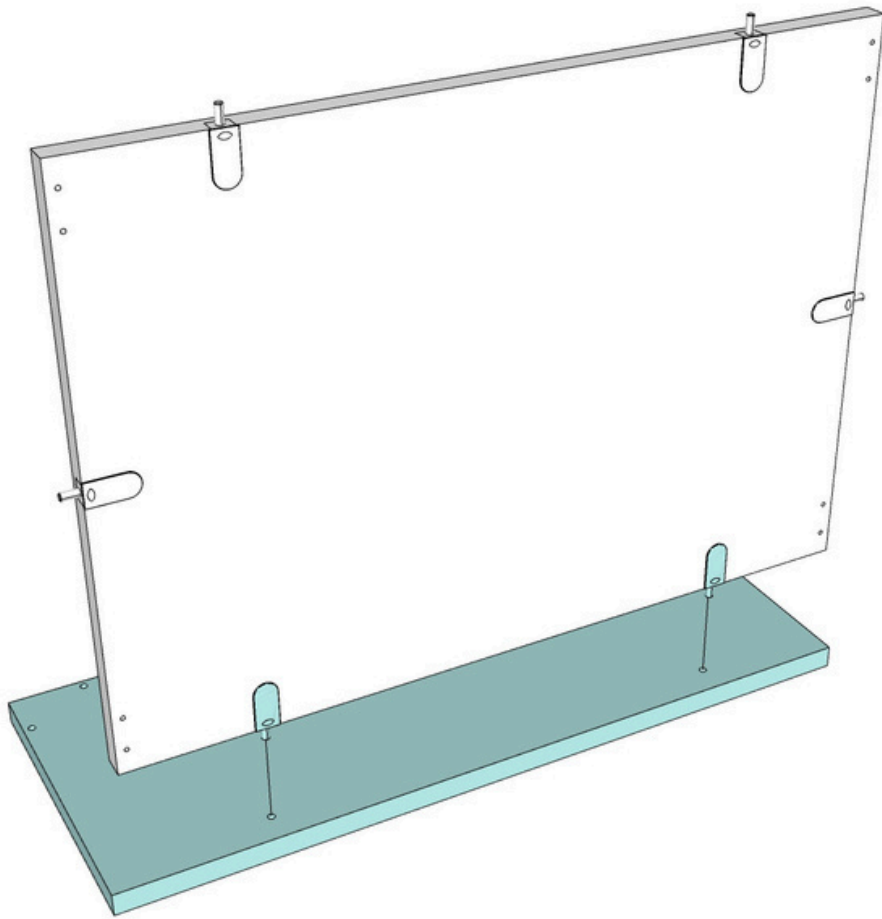
4

Step 2



Pull the top Drawer Guides out from the cabinet and align the Inner DrawerBOX onto the guides. Push back into place until you hear a "click" sound.

Step 3

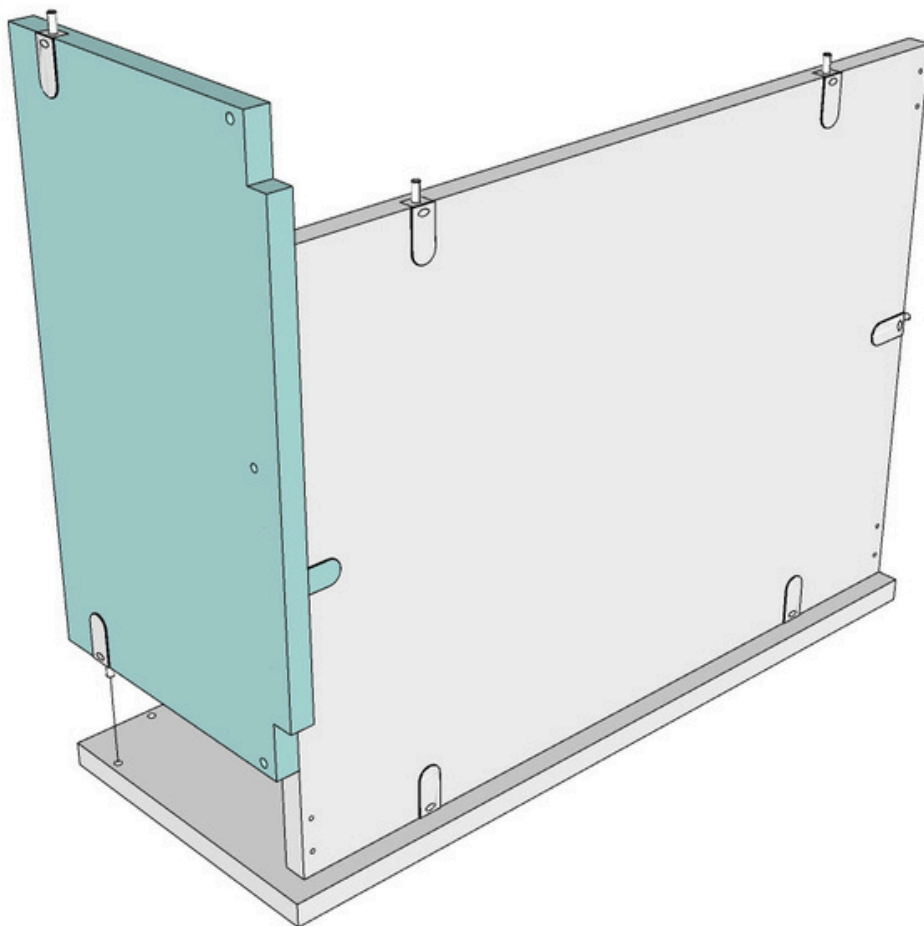


Attach the Drawer Bottom (KPDBO) to a Drawer Side (KPDSD) using the **Kitch Assembly Tool**.

Hardware needed:

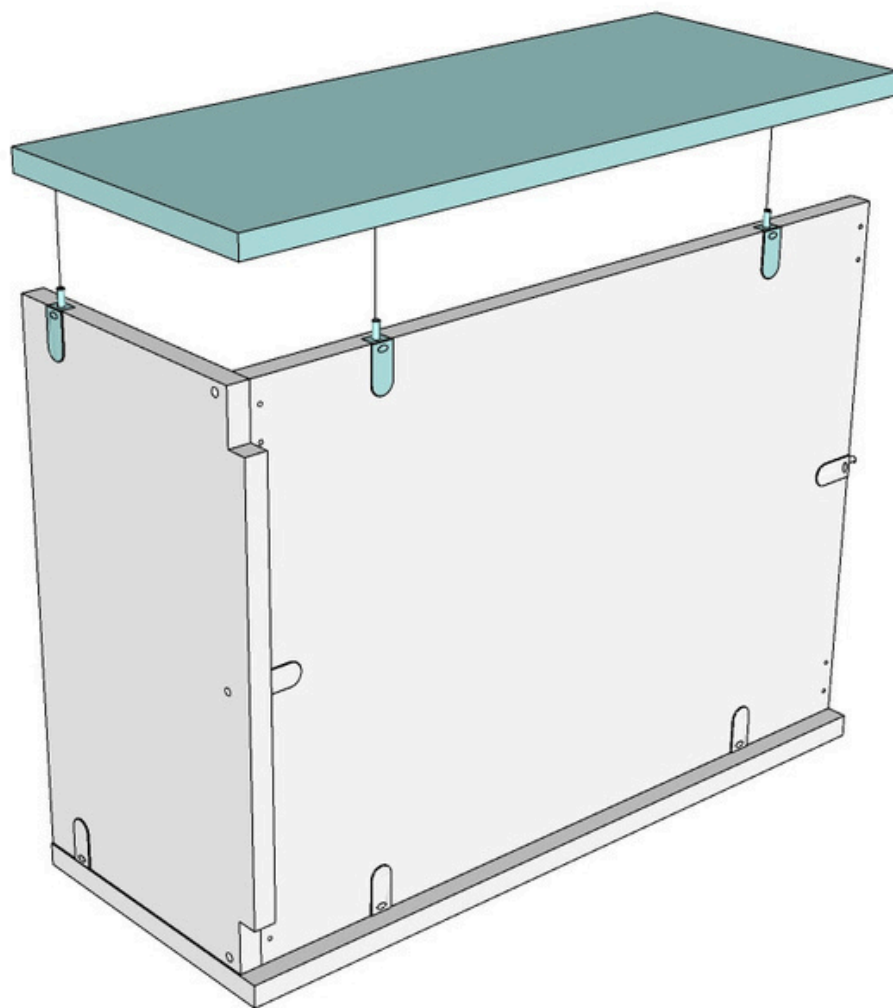


Step 4



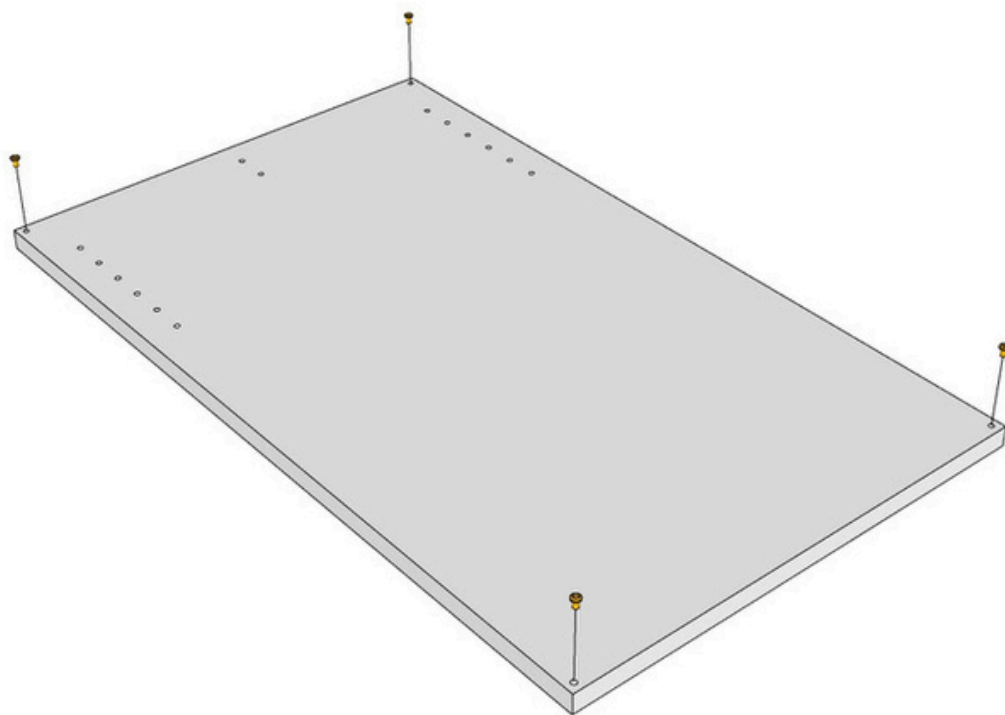
Attach the Drawer Back (KPDBA) to the Drawer Side (KPDSD), then, tighten the bottom fixing to the drawer back.

Step 5



Attach the other Drawer Side (KPDSD) to the Drawer Back (KPDBA) and Drawer Bottom (KPDBO).

Step 6

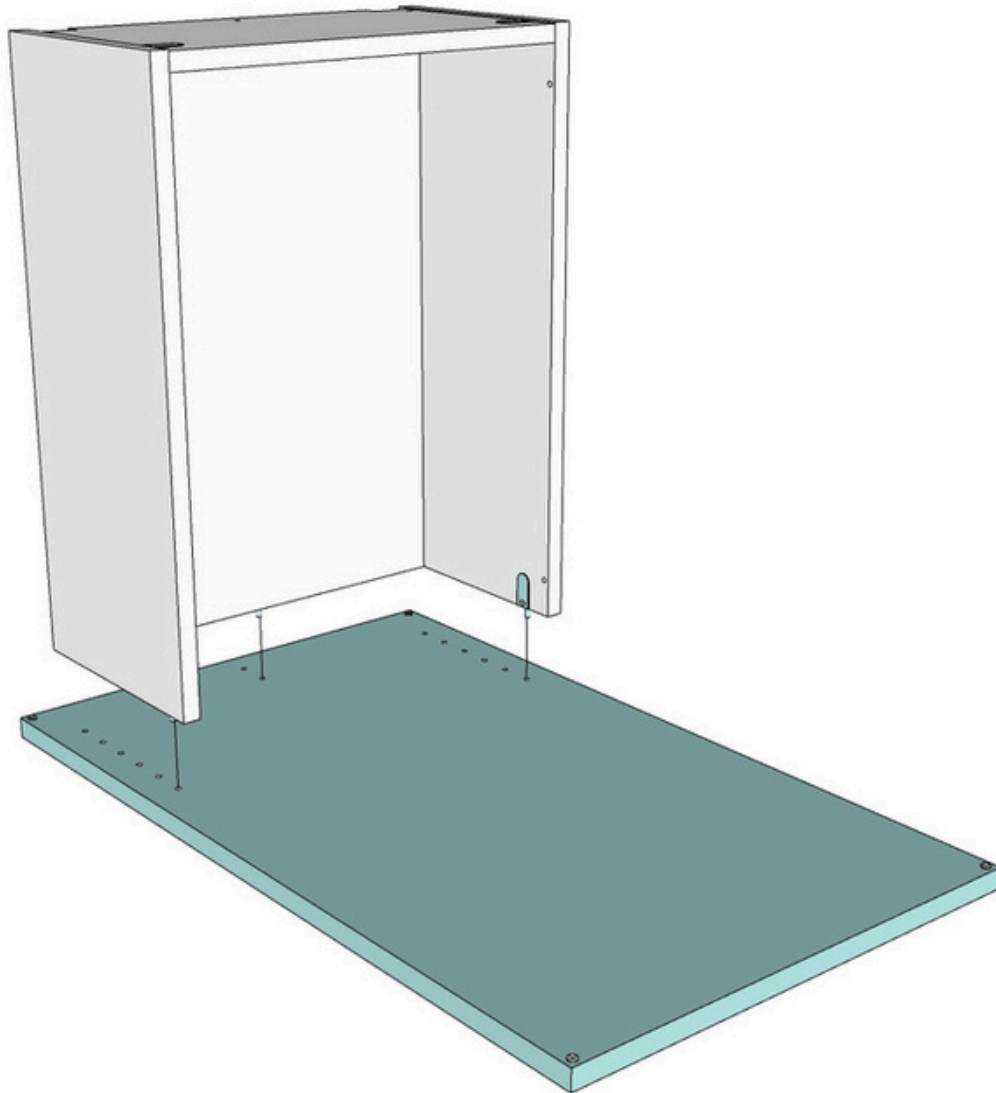


Insert the **bumpers** to the Drawer Front (KPDF).

Hardware needed:

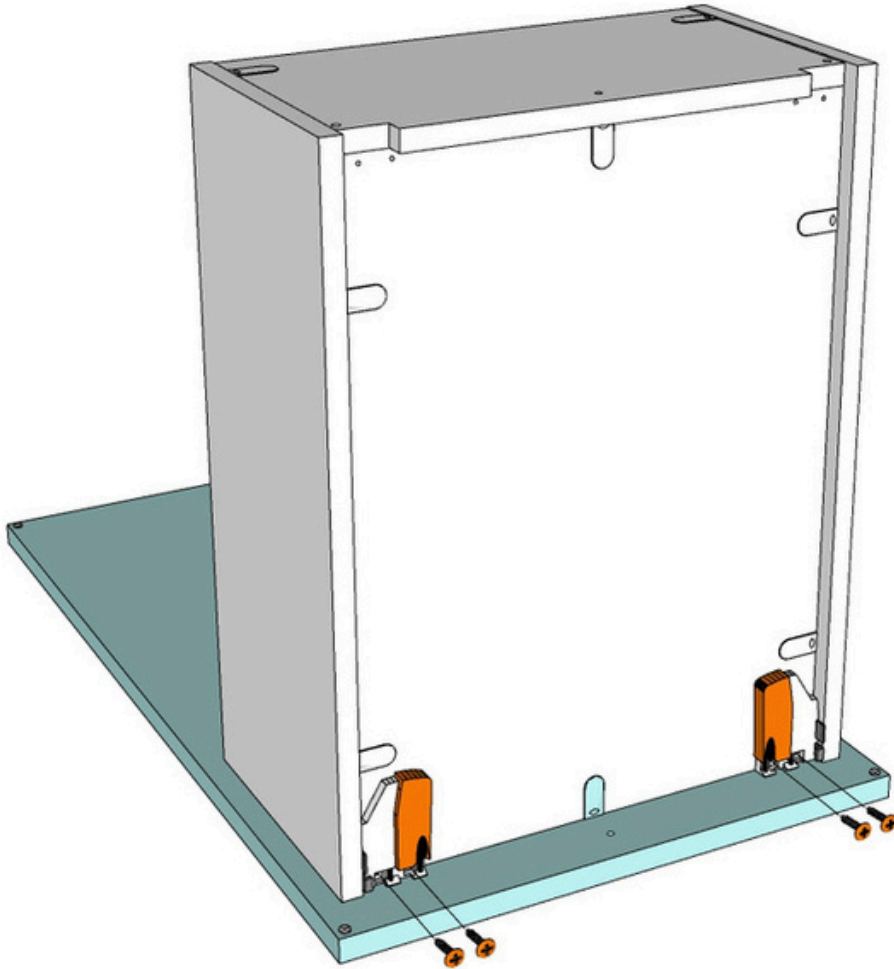
6

Step 7



Attach Drawer Sides (KPDSD) to the Drawer Front (KPDF).

Step 8



Tighten the Bottom (KPDBO) to the Drawer Front (KPDF).

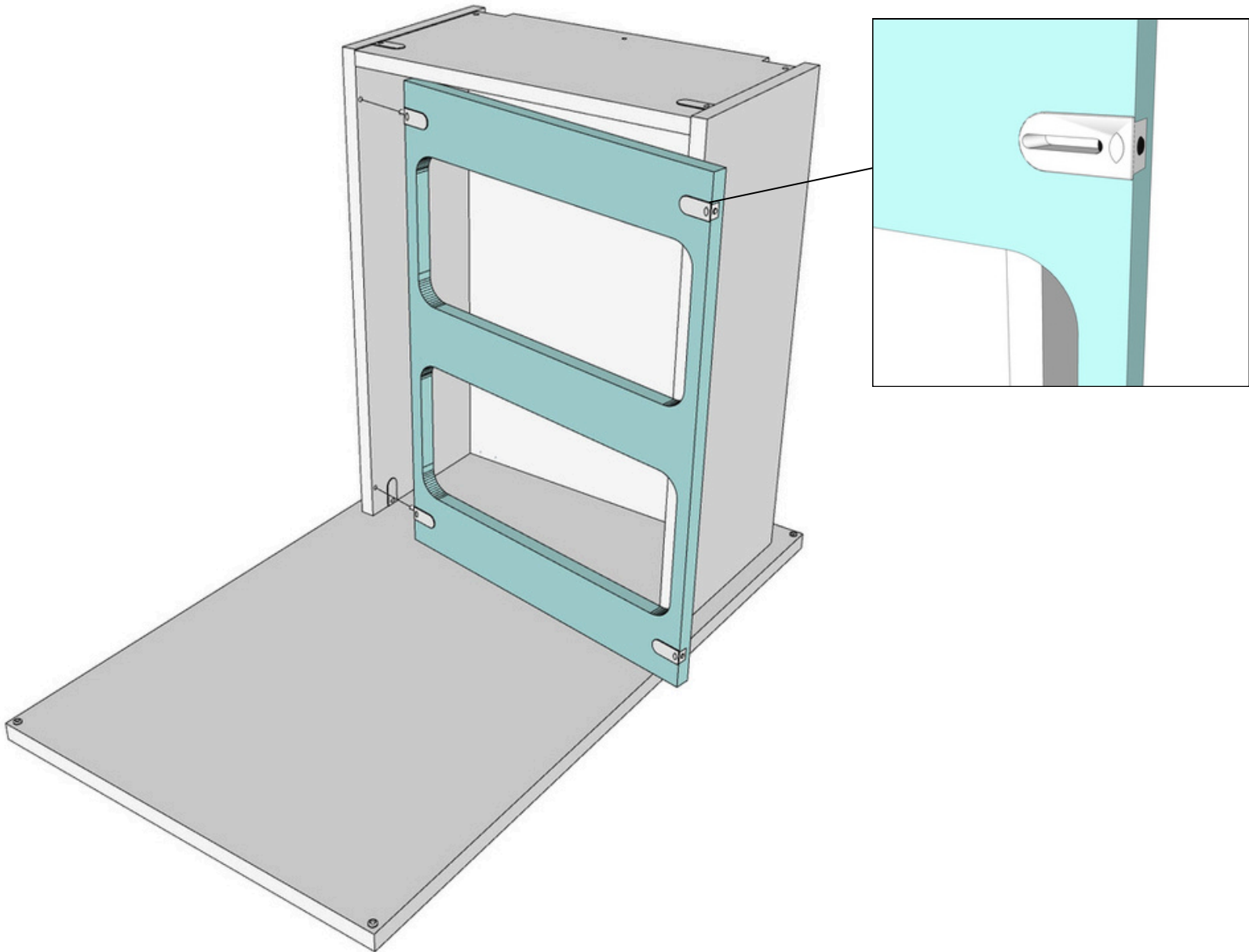
Using a #2 Roberston (square driver) screwdriver or driver bit, attach the locking devices to the Drawer Bottom (KPDBO) with the **screws** provided.

Helpful hint: the locking devices have a left and right side. They provide up-and-down adjustment once the cabinet is installed to even out gaps.

Hardware needed:

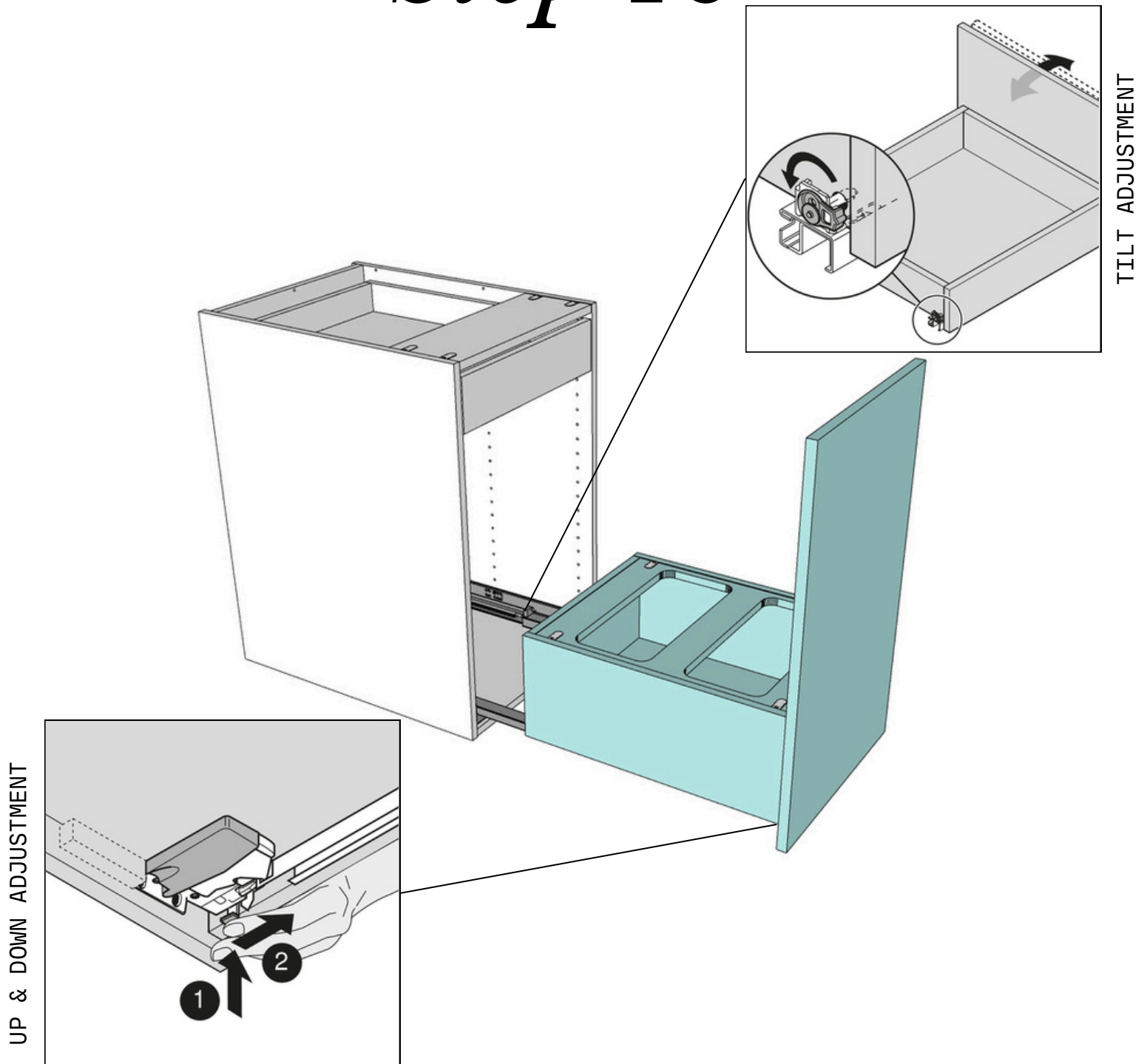
3

Step 9



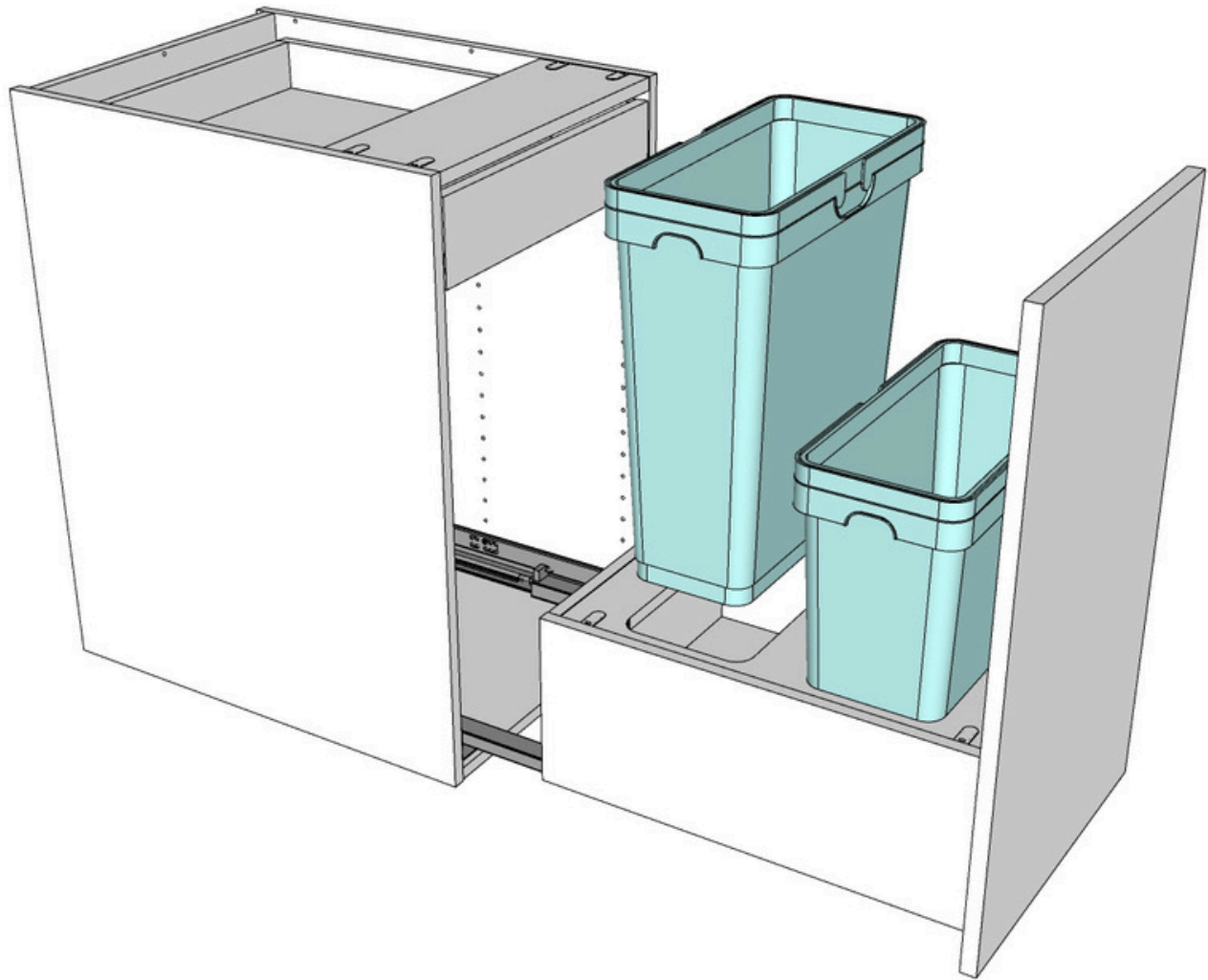
On the right side of the Garbage Drawer Bottom (KPDBO1822GR), unscrew both fixings so that the thread is flush with the edge of the panel, then, tighten the left side fixings to the left Drawer Side (KPDSD) followed by the right side.

Step 10



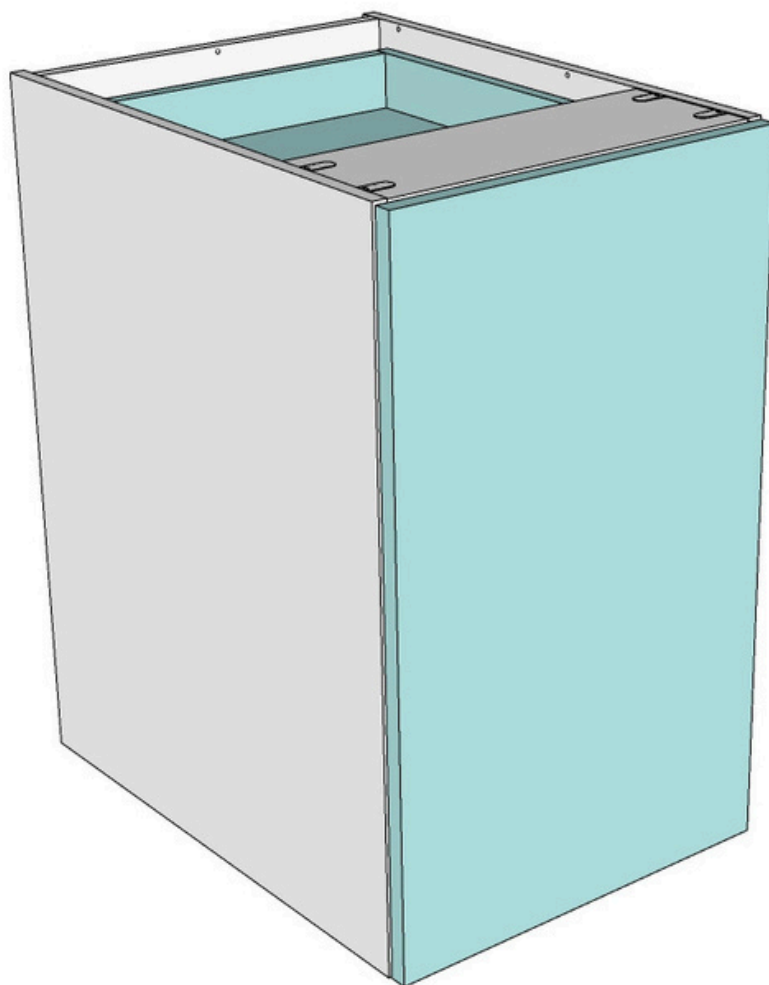
Pull the bottom Drawer Guides out from the cabinet and align the High Bin DrawerBOX onto the guides. Push back into place until you hear a "click" sound.

Step 11



Insert the Bins (041-PCO-LA30-AG) into the DrawerBOX.

Step 12



Your BaseBOX cabinet configuration is now assembled.