

BEAUTIFULLY
SIMPLE

BRING YOUR IDEAS TO LIFE

COUNTLESS
POSSIBILITIES

Kitch™

B303DRICCC

MODULAR CABINET SYSTEMS
100% --- CANADIAN MADE

Inspect the Product

A friendly reminder to unwrap and inspect your Kitch products before assembly and installation. You may find a blemish, but no sweat! Our KitchBOX parts are universal, so just rotate the blemish toward the back of your cabinet.

If a remake is required, please take photos of any damages along with the label on the piece and email them to hello@mykitch.ca. We'll review and advise what the next steps will be for you. **You have 15 DAYS from receiving your products to report these to us.**

Tools Required

- #2 Robertson (square drive) screwdriver or screwdriver bit.
- *Hardware needed:*

4

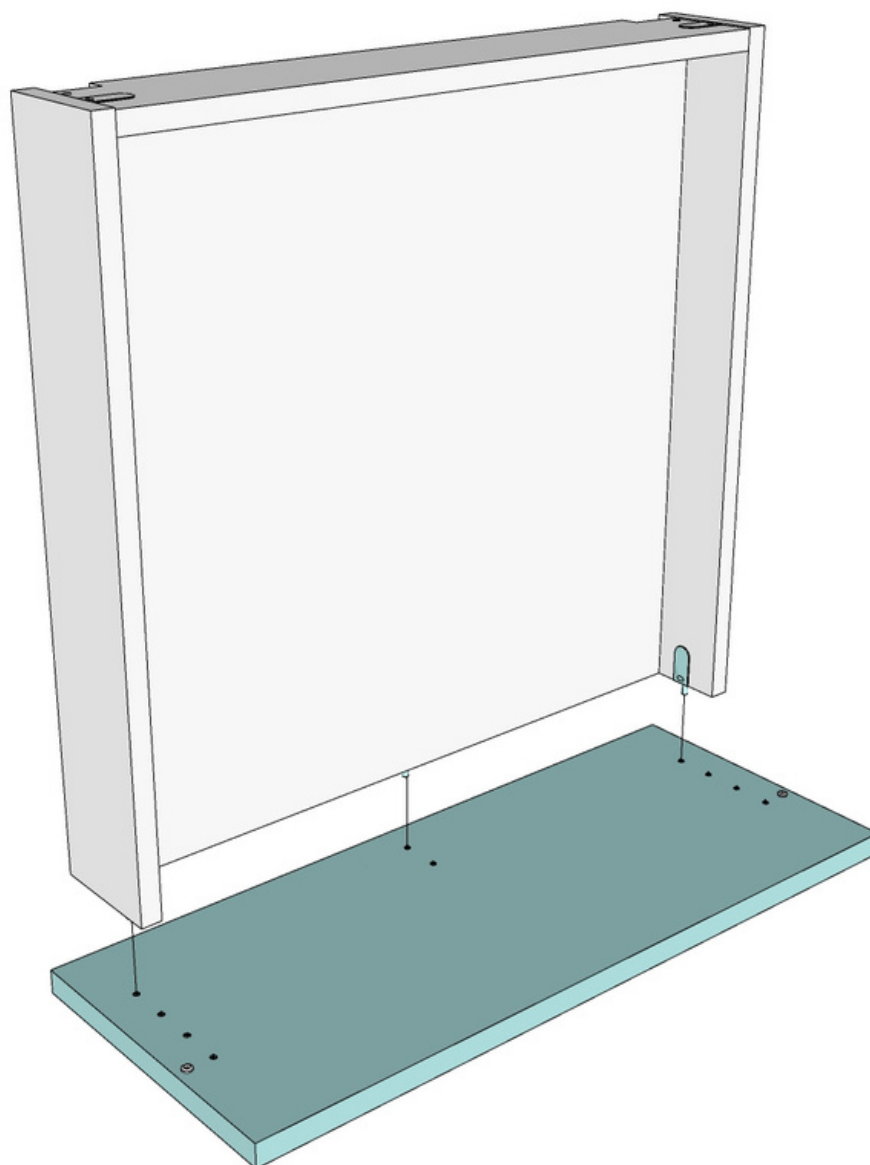
Before Assembly

Before you follow the steps below to assemble your configuration, you will need to assemble the BaseBOX and DrawerBOX by following the QR code below.



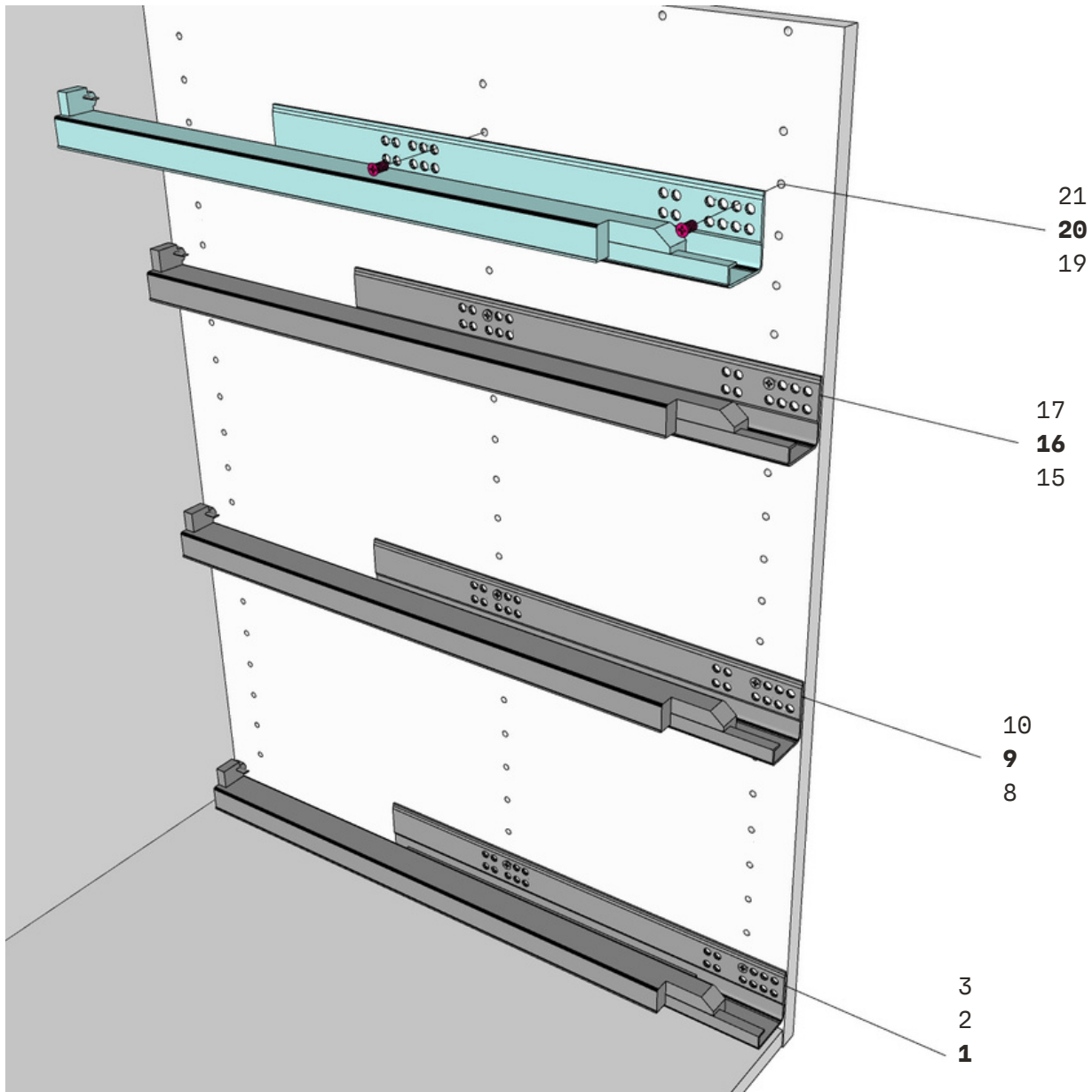
CLICK OR SCAN

Step 1



When assembling the top exterior Low Drawer Box, attach the Drawer Front (KPDF) to the bottom row of holes.

Step 2

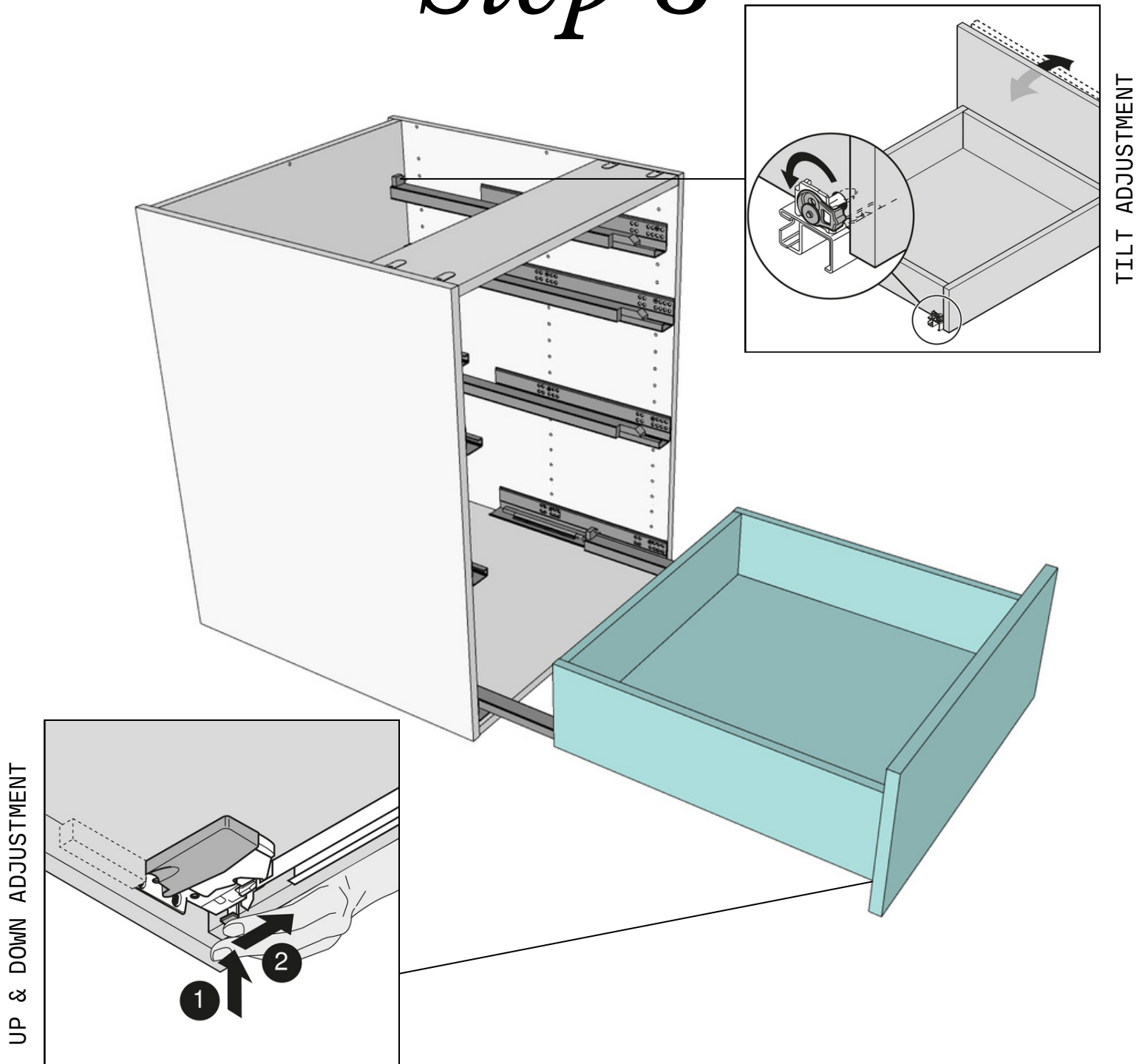


Align each Drawer Guide with the corresponding hole numbers on each Gable (KPGA). With the **Drawer Guide Screws** provided, attach the bottom three Drawer Guides through holes 4 & 9 and the top set through holes 2 & 7.

Hardware needed:

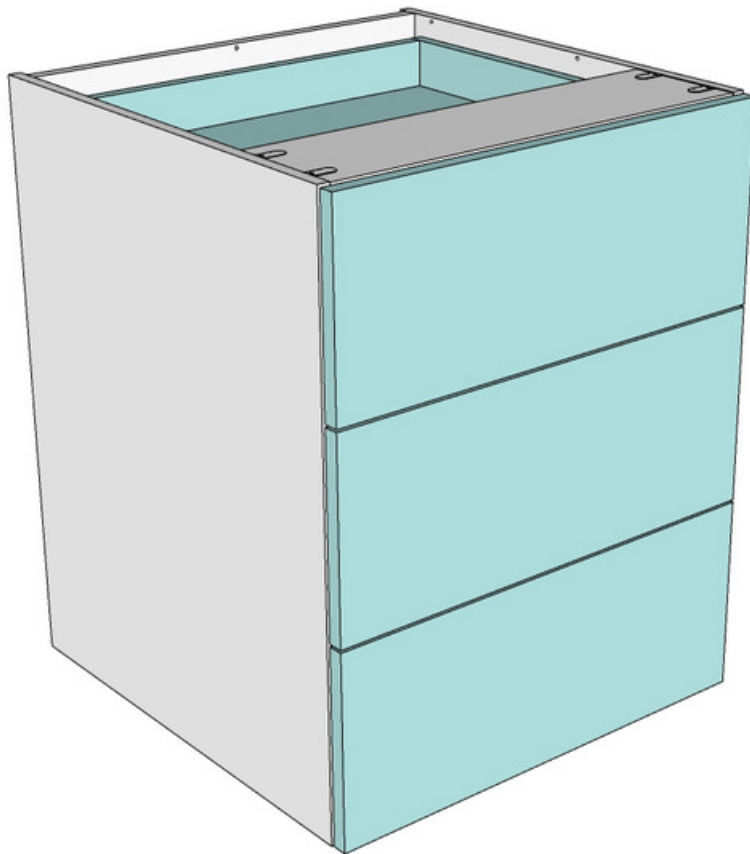
4

Step 3



Pull the Drawer Guides out from the cabinet and align each DrawerBOX onto each of the guides. Push back into place until you hear a "click" sound.

Step 4



Your BaseBOX cabinet configuration is now assembled.