

BEAUTIFULLY  
SIMPLE

BRING YOUR IDEAS TO LIFE

COUNTLESS  
POSSIBILITIES

# Kitch™

## B202DRCC

MODULAR CABINET SYSTEMS  
100% --- CANADIAN MADE

## Inspect the Product

A friendly reminder to unwrap and inspect your Kitch products before assembly and installation. You may find a blemish, but no sweat! Our KitchBOX parts are universal, so just rotate the blemish toward the back of your cabinet.

If a remake is required, please take photos of any damages along with the label on the piece and email them to [hello@mykitch.ca](mailto:hello@mykitch.ca). We'll review and advise what the next steps will be for you. **You have 15 DAYS from receiving your products to report these to us.**

## Tools Required

- #2 Robertson (square drive) screwdriver or screwdriver bit.
- *Hardware needed:*

4

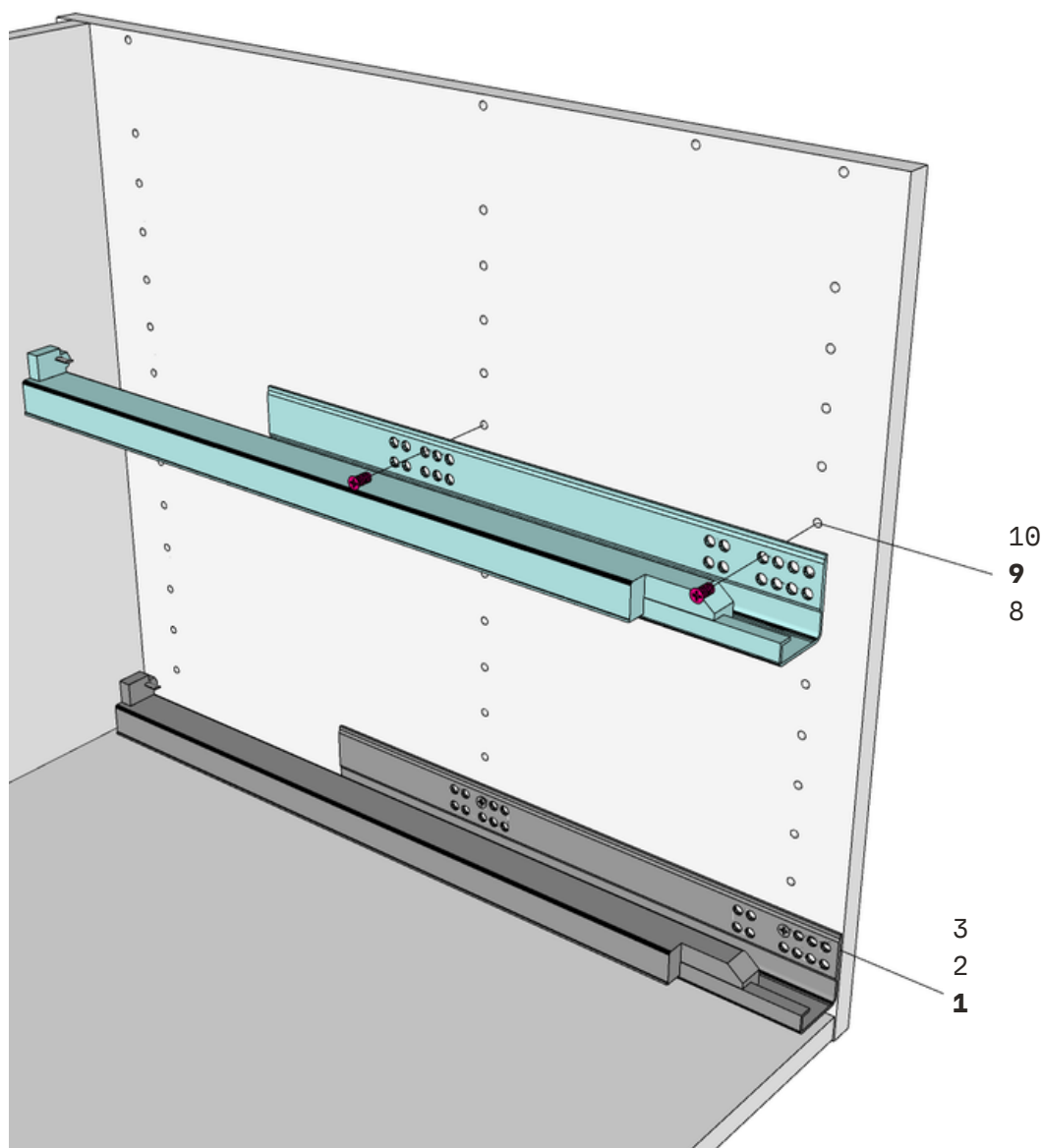
## Before Assembly

Before you follow the steps below to assemble your configuration, you will need to assemble the BaseBOX and DrawerBOX by following the QR code below.



CLICK OR SCAN

# Step 1

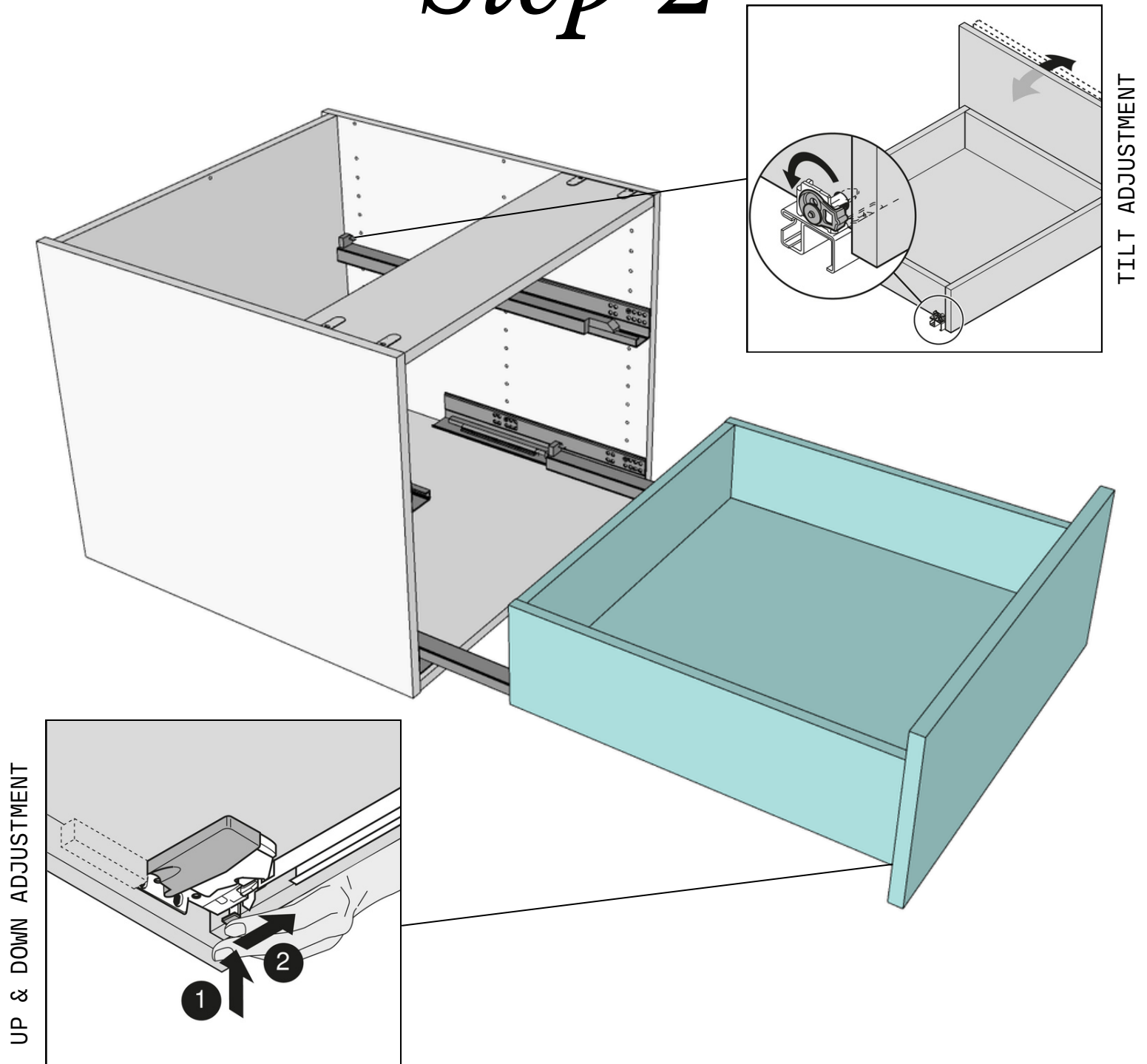


Align each Drawer Guide with the corresponding hole numbers on each Gable (KPGA). With the **Drawer Guide Screws** provided, screw through the Drawer Guide holes 4 & 9 into the cabinet gable.

*Hardware needed:*

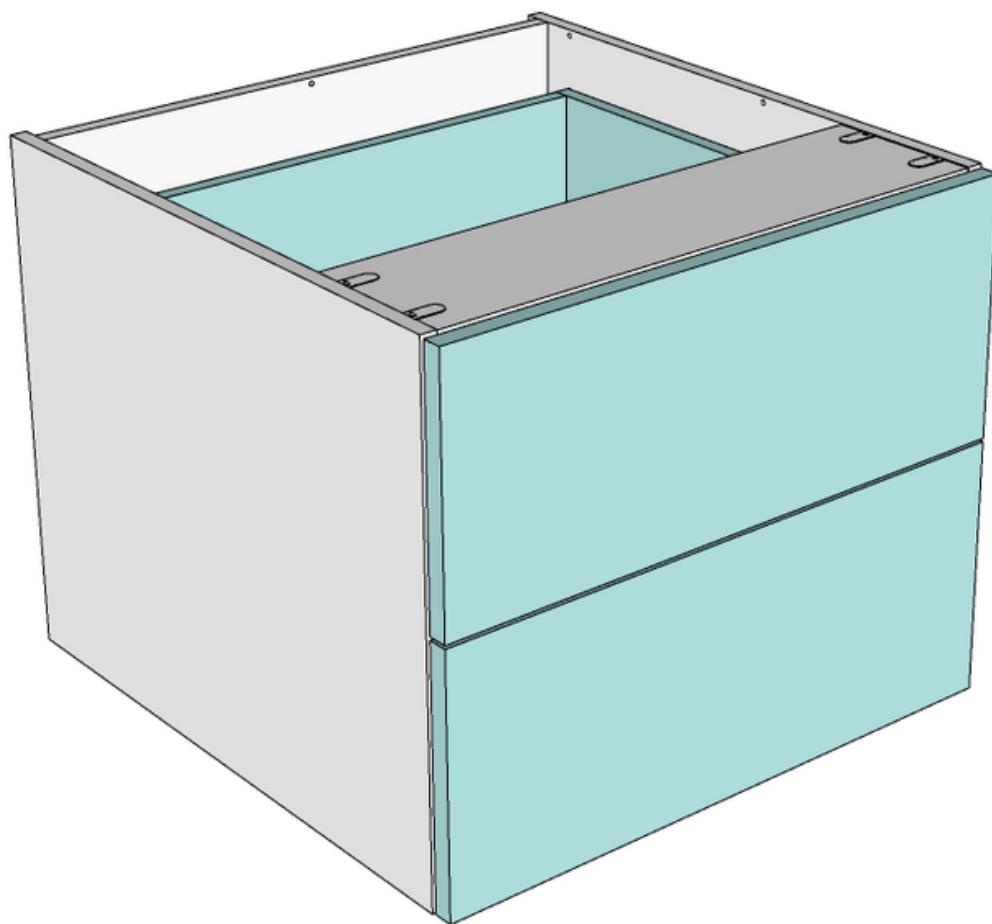
4

# Step 2



Pull the Drawer Guides out from the cabinet and align each DrawerBOX onto each of the guides. Push back into place until you hear a "click" sound.

# *Step 3*



Your BaseBOX cabinet configuration is now assembled.