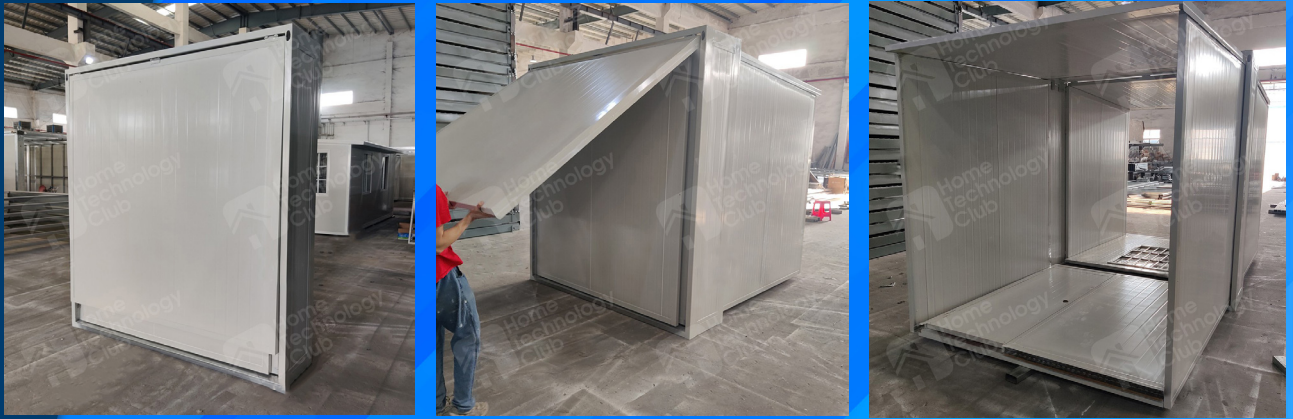


IVY EXPANDABLE FLATPACK CONTAINER UNIT



EXPANDABLE CONTAINER UNIT SUITABLE FOR SMALLER SCALE DESIGNS

Perfect for use as a small office or pop-up booth, the IVY unit is our smallest and most versatile product. Due to its compact size & flatpacked design, the container is easily transportable and shipping the unit once packed up doesn't take up lots of space, saving you on additional freight costs.

Simple Installation ○

The expandable design of the container unit allows it to be folded out from itself and only requires a few screws to keep it rigid and upright.

Easily Relocatable ○

The IVY has a solid and durable structure, however with the expandable design traits, it can be easily relocated and delivered with ease.

Multi-Purposed Portable Building ○

The IVY can be used for quick accommodation, retail use, storage or a workspace. Your imagination is the limit with the endless possible applications for the IVY.

SPECIFICATIONS

IVY	
Size	4630mm (L) x 2170mm (W) x 2500mm (H)
Weight	Approx ~750kg
Material	EPS Sandwich Panel

INSTALLATION SNAPSHOT



The IVY will arrive flatpacked for ease of transportation and efficient expansion and installation. It is important to place the unit upright to begin the installation process.

The interior floor and walls are then folded out from each side of the container, these can be screwed into place in order to make the unit structurally sound.



Once the floor and walls have been expanded the unit takes shape as a cozy container unit with approximately 10sqm of floor space.

Your IVY unit is now prepared for additional fitout and fixtures at your own discretion.



IMAGES



The IVY is able to withstand the natural elements of the Australian climate.

In order to level out the unit, we recommend using besser blocks or building piers as footings.

The interior floor and walls are sealed from the inside which makes the container watertight and structurally sound.



The IVY has capabilities to run off-grid sustainable power with the addition of our solar products. We are able to fit the containers out with electrical connections in the form of multiple GPO's as well as lighting for your unit.

CONTACT US for more information on our full range of container homes and our fitout and delivery services.

8 Precision Place, Mulgrave, NSW 2756
 (02) 4545 2599
 Monday-Friday 9am-5pm