

TAILWATERS TRAVEL | WORLDWIDE ANGLING DESTINATIONS

WHITE RIVER TROUT CLUB

FLIPPIN, ARKANSAS



TAILWATERS
TRAVEL CO
ESTD 2007

TABLE OF CONTENTS

06 [DESTINATION DESCRIPTION](#)

08 [FISHING PROGRAM](#)

12 [ACCOMMODATIONS](#)

18 [TRAVEL](#)

20 [WHEN TO GO?](#)

24 [NON-ANGLING ACTIVITIES](#)

29 [RATES](#)





ABOUT US

OUR TRAVEL SERVICES ARE FREE OF CHARGE!

YOU THE CLIENT DON'T PAY A PENNY FOR OUR TRAVEL SERVICES!

Our destination recommendations, organization, and pre-trip planning services are completely free of charge - and oftentimes less expensive than booking direct with a lodge or outfitter. We can assist with every question, concern, or special request related to your adventure at zero cost!

WE HAVE BEEN THERE

We do not send our clients to any destination we have not visited ourselves. From the remote rivers of the Kamchatka Peninsula, the marshes of Southern Louisiana, to the sandy flats of the Seychelles, we have experienced the travel involved, eaten the food, fished with the guides, understand the seasonality, and exactly what gear and tackle is most productive.

FINDING THE DESTINATION THAT IS RIGHT FOR YOU

Whether you are looking for a family holiday, a long weekend getaway, or a hard-core fish camp, we have assembled a catalog of destinations that fits the billing. Super exotic trips to far-off spots like Seychelles, Patagonia, or Bolivia are today's cutting edge epic adventures, while the beachfront home in the Bahamas with tailing bonefish out back may be what you are after. The affordable three-day trip to Louisiana for trophy redfish is a home-run, specialized permit fishing trips may be on the menu, or a mountain destination with loads of non-angling activities for the whole family is an option. We have the first-hand experience and personal relationships in place to send you and your group to the right spot at the right time of year.

NOT EVERYTHING TO EVERYONE

We do not pretend to be the experts on every single fishery or fishing lodge on the planet. Some competing agents will list dozens of lodges or outfitters in a single region. We know from nearly twenty years experience there is no way to maintain a sincere or realistic connection with a specific lodge with such a cumbersome catalog of offerings. Managers, politics, food, travel logistics, guides, the health of the fishery, and personal relationships change at fishing lodges often! Tailwaters takes a less is more approach by choosing to represent the best of the best operators in the business. Tight relationships and legitimate partnerships with our operators ensure our clients are properly paired up with a destination at the top of its game. What's the point of offering two dozen fly-out lodges in Alaska when you can cherry pick the best? We are not the Wal-Mart of the fly-fishing travel industry - and don't want to be.

BEST PRE-TRIP PLANNING IN THE BUSINESS

When you book a trip with us you will receive one of our destination specific pre-trip planner & outfitting guides. These comprehensive packets contain everything from maps to gear & tackle recommendations, information about commercial travel arrangements, lodge policy, country information, itinerary, travel insurance and much more. Our outfitting guides have been meticulously prepared to provide you with the most informative and up to date pre-trip planning reference in the industry. Although we are always on call at the office, our outfitting guides are the ultimate go-to resource for questions or concerns about planning your trip.

WHITE RIVER TROUT CLUB // ARKANSAS

DESTINATION DESCRIPTION

LOCATION: FLIPPIN, ARKANSAS ON THE WHITE RIVER. 8 MILES SOUTH OF THE BULL SHOALS DAM.

PRICE: \$ \$1,950 / PER PERSON (3 NIGHTS / 2 DAYS)

SPECIES: BROWN TROUT, RAINBOW TROUT, CUTTHROAT TROUT, BROOK TROUT, TIGER TROUT

WRTC has redefined the typical NW Arkansas trout fishing experience with fresh upscale accommodations and a next level guiding operation. This owner-operated lodge recently completed an extensive construction / remodel, and is hands down the nicest place on the banks of this infamous trophy trout fishery.

The White River Trout Club overlooks the White River near Flippin, Arkansas - arguably one of the best trout fisheries in the lower forty-eight. While the property was originally established as a fishing lodge in the early 70's, the premises were completely transformed with an extensive remodeling project in 2022, and the White River Trout Club was born. Located at the end of a quiet country road on 900 feet of riverfront property, WRTC offers the most complete, service oriented lodging and sophisticated fishing experience in NW Arkansas.

Focused primarily on fly fishing, the club is an ideal retreat for fishermen, outdoor enthusiasts, and those looking to host private events - such as corporate or church retreats, family reunions, bachelor parties or weddings. Whether you're an avid angler, or just looking for a scenic getaway - WRTC has a little something for everyone. WRTC is located just eight miles below Bull Shoals Dam, so guests have immediate access to the best fishing on the entire White River.

WRTC should always be considered an option for both the long weekend trout fix as well as a full week proper fishing holiday. With a reasonable price point, over the top service, a convenient location, and a world class trophy trout fishery; we could not be more excited to offer this one of a kind destination.





FISHING PROGRAM

The White River is becoming a global trophy trout fishing destination. Rightfully so, as it is home to some of the largest brown trout in the world. While most people come to the White for a once-in-a-lifetime brown, the rainbow population is not something to ignore. Besides rainbow and brown trout, the White River and Norfolk River also has cutthroat and brook trout regularly available. The White hosts a strong population of trout for nearly 100 miles and most of the fishing is done within the first 45 miles of the Bull Shoals dam.

WRTC guests have easy access by virtue of their prime location. And with the use of a custom style river boat with a jet motor and oars, allowing guides to fish anglers in super skinny water as well as the ability to cover 20+miles in a day's fishing. The other main option would be a drift boat which is the most popular method out west. The drift boat can be a great option for when the river is very low and the trout are spooky and need a stealthier approach, but it is also the main way to float the warm-water rivers and creeks for when the angler wants to mix things up and chase bass and carp instead of trout.

| DIVERSITY OF THE FISHERY

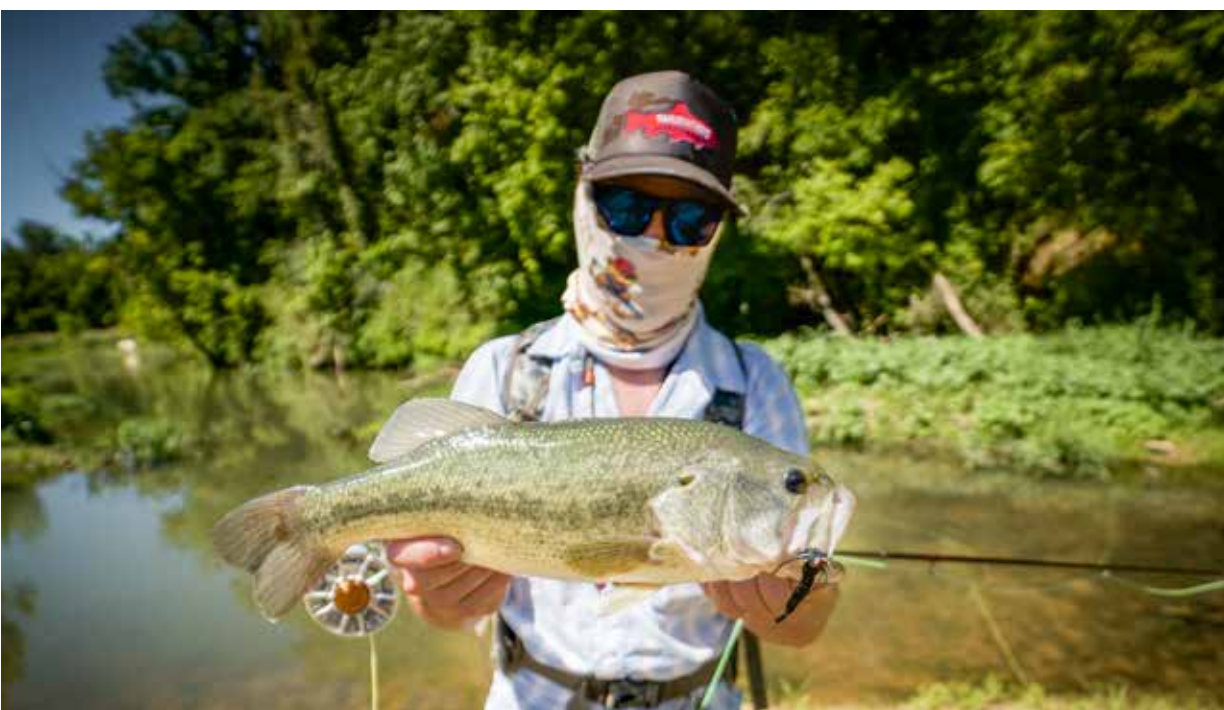
Two other available fisheries in the area are Bull Shoals and Norfolk Lake. They play host to some of the best bass fishing in the country, with the most notable and targeted species being largemouth, hybrid and striped bass. More unique options such as carp and walleye are available for the fly angler to target.

| THE WHITE RIVER SYSTEM

The White River, in its entirety, is an impressive river system beginning around Fayetteville, Arkansas. The river flows north and has two dams along the way before it reaches the most well-known trout section on the system. The dam at Bull Shoals Lake, is where most people's knowledge of the White River trophy water begins and continues nearly 100 miles south. The main reason this river stays cold enough for trout to live comfortably for all those miles is because the White's little sister and lesser-known river, the Norfolk, a short but very sweet tailwater that only runs 4.5 miles in length. Despite the Norfolk River being only a few miles long, it flows into the White forty miles downstream and pumps a lot of cold water and nutrients, allowing the water to become even cooler and support trout for another 50+ miles. Both rivers have had world record brown trout and are unique and fantastic in each of their own right. Having two trout-filled tailwaters only a short drive from each other allows guests to have options to choose from, enabling us to accommodate the angler's exact wants and desires for their day of fishing.

| OTHER OPTIONS

While trout fishing is king in this part of the state, most people often overlook the other amazing warm-water fisheries that are also in their backyard. The most notable being the Buffalo River, Crooked Creek and the Kings River. All three of these watersheds, just like the White and Norfolk, are unique and offer something very special to the anglers in search of warm water species. The smallmouth and largemouth bass, as well as carp, are the main incentive for anglers to explore their waters, not to mention the beautiful scenery and surrounding National Parks.





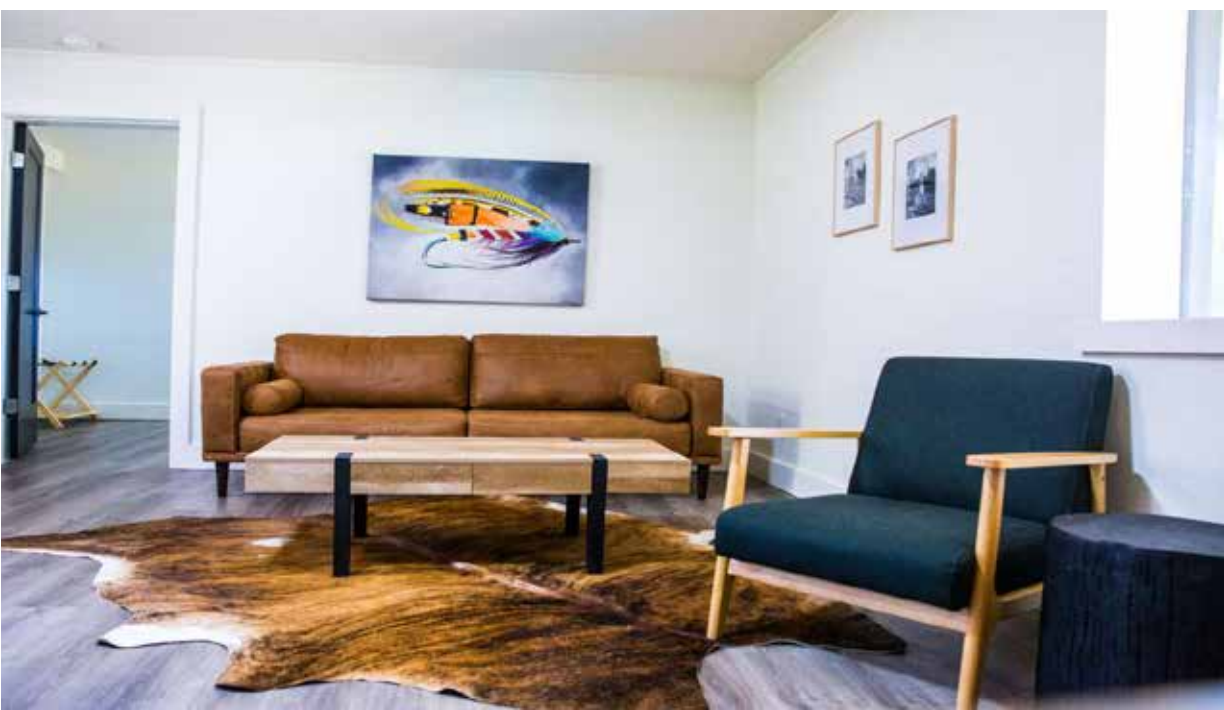
ACCOMMODATIONS

The club is home to thirteen riverfront cabins and the “Horseshoe”, which consists of ten individual units of various sizes under one roof but connected by a covered walkway. Additional improvements include the Pavilion - a stand alone building for gathering with indoor and outdoor space, billiards and shuffleboard tables and a fireplace. Guests also enjoy a super nice bar/dining room and commercial kitchen, private dining/conference building, a legit fly shop, swimming pool, boat dock and private boat ramp. The six acre property boasts plenty of riverside green space complete with fire pits, outdoor lounge areas, a basketball court, and an event lawn and patios - all situated under a canopy of massive hardwood trees. The property looks more like a beautiful park than a lodge.

| THE RIVERFRONT CABINS

Guests booked with the more inclusive packaged trips enjoy single occupancy accommodations in the updated, spacious, and luxurious riverside cabins. Private rooms are included / standard in the packaged cost for packaged trips. Every cabin is laid out a bit differently and adaptable for groups of all sizes. The cabins all have large common areas and private baths, porches and seating areas, and a heightened sense of privacy.







| THE HORSESHOE BUILDING

Twelve rooms that have been newly renovated and designed for a perfect river experience. All rooms contain Queen-sized mattresses. Each room boasts of a flat screen TV and a kitchen ranging from full to partial depending on the unit including microwave, refrigerator, coffee pot/fillers, pots & pans, mixing bowls, cups, plates, electric range, cutting boards, and numerous gadgets/utensils. A charcoal grill is available upon request. Complimentary WiFi is also available for guests on property. Anglers to explore their waters, not to mention the beautiful scenery and surrounding National Parks.

| FOOD & BEVERAGE

WRTC's custom bar houses a collection of beer, wine, and liquor. On site dining options include a variety of catered meals as well as a limited bar menu. Swing by for a post-fishing cocktail or a treat to tide you over before dinner. In addition to the dining hall, be sure to stop by the lodge office/shop before your trip for some coffee and grab and go breakfast.

| THE PAVILLION

Follow the covered pathway to our favorite spot on the property - the pavilion! This 2500 sqft. riverside oasis is custom designed to fully enjoy the beauty of the riverside landscape; from the angle of the building that points directly downstream toward the bluff, to the floor-to-ceiling windows overlooking The White River, our pavilion is the heart of the club. Complete with multiple TV's, billiards and shuffleboard tables, cornhole, card table, darts, floor-to-ceiling fireplace, and plenty of indoor and outdoor seating and lounge-space.

| FLY SHOP

The closest shop to the water to buy terminal gear, flies and outerwear, located on the banks of the White River, is NOW OPEN at the White River Trout Club! WRTC has partnered with Tailwaters Fly Fishing Company to open "The Outpost" on site at the lodge. This quaint, 800 square foot Fly Shop is fully stocked with a focus on terminal tackle, flies, and seasonal technical wear. Just a few hundred feet from the White River, the Outpost is designed as a place to promote the sport of fly fishing, build community and outfit anglers while having a cold beer from the bar. The WRTC Outpost is open to local guides, club guests, and all anglers fishing our surrounding rivers. The property dock also allows easy access for anglers to come shop from the river.



TRAVEL

Guests at the WRTC have multiple options for both commercial and private aviation as well as easy access by car/truck.

BOONE COUNTY AIRPORT | HARRISON, ARKANSAS

Situated just forty minutes away from the WRTC, Boone County Regional Airport (HRO) Airport offers commercial flights serviced by Southern Airway Express, with direct flights from both DFW Airport and Memphis International Airport. HRO offers rental car services through both Hertz (870-743-1432) and Enterprise (870-365-7407).

MARION COUNTY REGIONAL AIRPORT | MARION COUNTY, ARKANSAS

If you plan to fly private, Marion County Regional Airport is located just 15 minutes away from the lodge. Marion County Regional Airport provides a 5,000 ft airstrip, access to fuel, and aircraft tie-downs.

SPRINGFIELD-BRANSON NATIONAL AIRPORT | SPRINGFIELD, MISSOURI

Located two hours from the lodge, Springfield-Branson National Airport (SGF) services all major airlines and offers daily flights from a variety of major cities. Several rental car companies are located at SGF.



NORTHWEST ARKANSAS NATIONAL AIRPORT | HIGHFILL, ARKANSAS

Located 2 ½ hours from the lodge and just outside of the Fayetteville/Bentonville area, Northwest Arkansas National Airport (XNA) services all major airlines and offers daily flights from a variety of major cities. Several rental car companies are located at XNA.

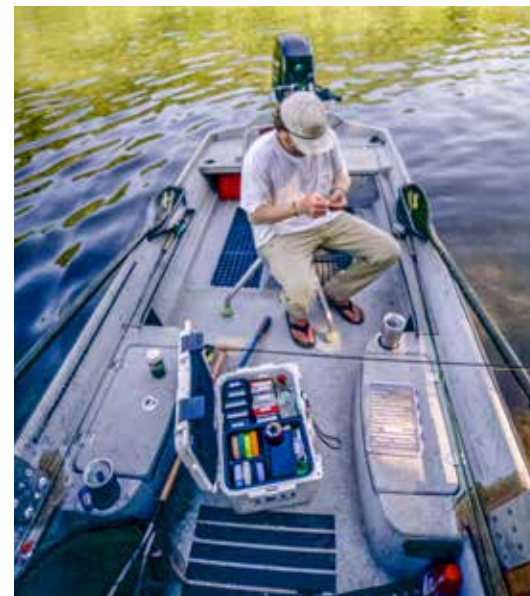


WHEN TO GO?

ALL THE RIVERS IN THE REGION INCLUDING THE WHITE OFFER GREAT FISHING YEAR ROUND! EACH SEASON OFFERS A FEW NUANCES RELATED TO THE WEATHER, HATCHES, AND STYLE OF FISHING - BUT THERE IS NOT A BAD MONTH TO BE THERE. WHETHER SWINGING BIG FLIES IN THE WINTER, ENJOYING BIBLICAL CADDIS HATCHES IN THE SPRINGTIME, OR CHUNKING HUGE FOAMY TERRESTRIAL DRY FLIES IN THE SUMMER AND EARLY AUTUMN, ANGLERS SHOULD EXPECT EQUAL OPPORTUNITY FOR GREAT FISHING TWELVE MONTHS A YEAR.

WINTER

Streamer fishing is what most people think of when they hear the White River. The winter months can be a great time to fish some of the largest streamer patterns you can think of. The ability to cast well is extremely important in this game. The brown trout get very aggressive this time of year because they are trying to get one last meal in before they start their spawn or they just spawned and need to pack on pounds after they have gone a long time without feeding. Streamer fishing is a super effective way to target wintertime fish - and nymphing can also be productive and produce some real giants. Dry fly fishing can also be an option during the colder months, all it takes is a warmer winter day to get the midges happy and hatching and the trout will be looking up.





SPRING

The first real hatches of the year begin during the Spring and their timing is all relative to the air and water temperatures. The White River will begin to see caddis flying around in March, but April and May is prime time. This is a very special season on the river because every year the hatch gets thicker and more prominent. Spring can be one of the best times on the White River for an angler to connect with a brown trout of a lifetime. The brown's love caddis and they tend to lose all sense of security and doubts that they may show during the rest of the year. This hatch lends the option of any technique to the angler as nymphs, dry flies, swinging wet flies and soft hackles and even tight line euro style fishing are all productive methods.

Following the Caddis chaos is the often overlooked Sulphur hatch, which is a very well known mayfly ranging from the midwest to the northeast parts of the country. We start to see the sulphurs about the same time the caddis hatch begins to wane, generally around late May, and can continue as long as August. During this hatch, it allows the angler to fish any and every technique they prefer to do, as the fish will eat this bug in all of its five stages of their lifecycle. While it doesn't happen everyday on the river, this hatch can be prolific at times which results in some incredible dry fly fishing opportunities.

SUMMER

The summer heat gets numerous types of terrestrials very active and can be some of the most exciting dry fly and foam fishing one may ever experience. Most people just say summertime "hopper fishing" but there is much more than just hopper's including Japanese beetles, Cicada's, large spiders, as well as many other big flying insects. The beginning of this "season" is always blurry but generally can start being productive around mid June and can last through late fall. The best way to mentally approach this time of year and this technique of targeting large trout on the surface is to think of it as streamer fishing with a dry fly. The most productive way to fish this time of year is by covering a lot of water trying to find those aggressive fish that are looking up for a big meal. Good casting during this time of year can make or break an angler's day because these fish favor structure and trees, so most casts will be around or through trees, by logs, big boulders and any other places that allow fish to feel protected and willing to come to the surface to eat.

Throwing big dry flies can be addictive but don't write off the nymph fishing this time of year because trout feed primarily subsurface and with the amount and diversity of food beneath the water's surface, there is a greater chance of this method being more productive.

FALL

Fall is like Spring fishing in that it is also a transitional period and follows some phenomenal summer terrestrial fishing and is leading into winter fishing. This does not mean the fishing suffers. Depending on the weather, dry fly fishing can still be great and usually means the angler is throwing a terrestrial, caddis or midge. There are a few hatches during the Fall that most anglers look over, including blue wing olives, midges and smaller caddis, Fall is also the time when brown trout start to get ready for their winter spawn, so they are trying to pack on the pounds before they start finding their winter partner. Rainbow trout at this time will also have a false spawn so it can be beneficial to nymphing with an egg as a lead fly and if water conditions are right. Streamer fishing can also be a great way to find a large trout looking for a pre-spawn meal. The weather this time of year can be very comfortable and the angling traffic on the river tends to thin out much more than the peak seasons.



NON-ANGLING ACTIVITIES

The lodge itself is a super comfortable venue for non-angling companions to join. WRTC is a great spot for families to enjoy some restful time in a beautiful place with several amenities you would not expect.

ON-SITE AMENITIES

- Swimming Pool
- Rental boats
- Basketball court
- Pavilion
- Pool Table
- Shuffleboard
- TVs
- Sitting Areas & Fire Pits



OFF-PROPERTY LOCAL ACTIVITIES

- Indian Rock Cave & Trail
- Mountain Biking
- Kayaking & Paddleboard
- Shopping, Restaurants and Brewerie
- Bull Shoals Lake boat rentals and water activities





2023 RATES

(PRIVATE ROOM / SHARED BOAT)

5 NIGHTS / 5 DAYS FISHING - \$3,750 PER PERSON
5 NIGHTS / 4 DAYS FISHING - \$3,450 PER PERSON

4 NIGHTS / 4 DAYS FISHING - \$3,150 PER PERSON
4 NIGHTS / 3 DAYS FISHING - \$2,750 PER PERSON

3 NIGHTS / 3 DAYS FISHING - \$2,350 PER PERSON
3 NIGHTS / 2 DAYS FISHING - \$1,950 PER PERSON

2 NIGHTS / 2 DAYS FISHING - \$1,625 PER PERSON
2 NIGHTS / 1 DAYS FISHING - \$1,375 PER PERSON

SOLO FISHING SUPPLIMENT: \$300/DAY

WHAT'S INCLUDED

- » Accommodations
- » Premium accommodations in exclusive WRTC cabins
- » Guided Fishing
- » Rod/Reel Outfits & Flies & Terminal Tackle
- » All Meals
- » Beer in the boats
- » House Wine with dinner

WHAT'S NOT INCLUDED

- » Airfare to Harrison, Arkansas or independent travel arrangements
- » Premium Wine & Spirits / Bar Tab
- » Fishing License
- » Fishing Guide Gratuity and House Staff Gratuity

TERMS AND CONDITIONS:

A fifty percent deposit is required at the time of booking in order to confirm all reservations. Final balance is due thirty days from departure. All deposits and/or final payments are refundable up to 30 days prior to departure minus a \$100/night cancellation fee. Inside of 30 days, all deposits and/or final payments are non-refundable. Refunds or credits cannot be issued for fishing time lost due to inclement weather. Receipt of deposit and/or final payment is acknowledgment that the registrant has read and accepts the cancellation, refund and responsibility clauses. Travel insurance is highly recommended.



TAILWATERS FLY FISHING

1933 E. Levee St.

Dallas, Tx. 75207

travel@tailwatersflyfishing.com

tailwatersflyfishing.com

TAILWATERS TRAVEL

PO BOX 190226

Dallas, Tx. 75219

(888) 824-5420

(214) 219-2500