

# SUPPLY CHAIN MAP

Information compiled by  
Fraser Galloway  
Shriya Venkatesh  
Liming Zheng

for 480 QUEEN STREET  
by BVN



## Facade Section

## Material List

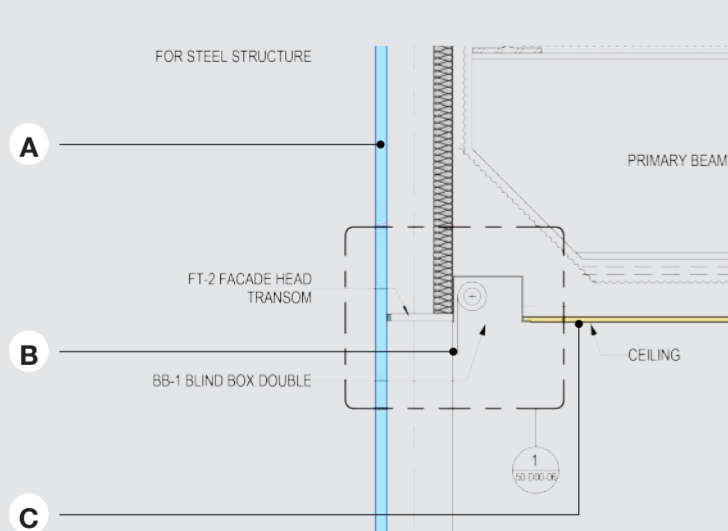


	Component	Manufacturer / Product	Manufacturer Location	Manufacturing Materials	Raw Material Location
A	Facade glazing	China Southern Glass / IGU Vision Panel	Shenzen, China	Silica Sand	Chongqing, China
B	Glare control blind	Vertilux (Euroscreen)	Keilor Park, VIC, Australia	Polyester (Synthetic fibre) Carbon black (pigment)	Europe Germany
C	Plasterboard ceiling	Gyprock (Square flushset CSR)	North Ryde, NSW, Australia	Gypsum Paper lining Clay Paraffin wax Vermiculite	South Australia, Australia Australia International - DID NOT DISCLOSE International - DID NOT DISCLOSE International - DID NOT DISCLOSE
D	Timber cladding	Sharp / Spotted Gum seasoned hardwood	Wacol, QLD, Australia	Hardwood (broadleaved tree)	North Queensland, Australia
E	Rubber sheet flooring	Nora / Ultra Grip	Hohnerweg, Weinheim, Germany	Natural rubber Natural minerals Colour pigments Rubber based glue	DID NOT DISCLOSE
F	External Patching Compound	Ardex Australia / Filler Compound Ardex A46	Seven Hills NSW Australia	Graded sand (Silica) Portland cement Calcium carbonate (binder) Calcium aluminate cement	Australia (AICS)
G	Acoustic panels	Autex Australia Pty Ltd / Autex Quietspace	West Heidelberg, VIC, Australia	Polyester fibre (polyethylene terephthalate (PET))	Australia
H	Marble flooring	Saba Bros Tiling / Chinese pink jade marble	Yatala, QLD, Australia	Nephrite (mineral) Jadeite (mined mineral) Resin (viscous liquid)	Xiamen, China
I	Tile flooring	Metz / Microgrip porcelain floor tile	Melbourne, VIC, Australia	Clay (natural rock or soil) Feldspars (abundant mineral) Quartz (common mineral) Kaolin (clay mineral) Limestone (sedimentary rock) Glaze / coating	Italy Germany Spain Portugal

## Material thumbnails



## Close-up Facade Section



## Building Images



Reference List - see 'Materials Map Reference List'



# SUPPLY CHAIN MAP

NIELSEN JENKINS / MATERIAL SUPPLY CHAIN MAP

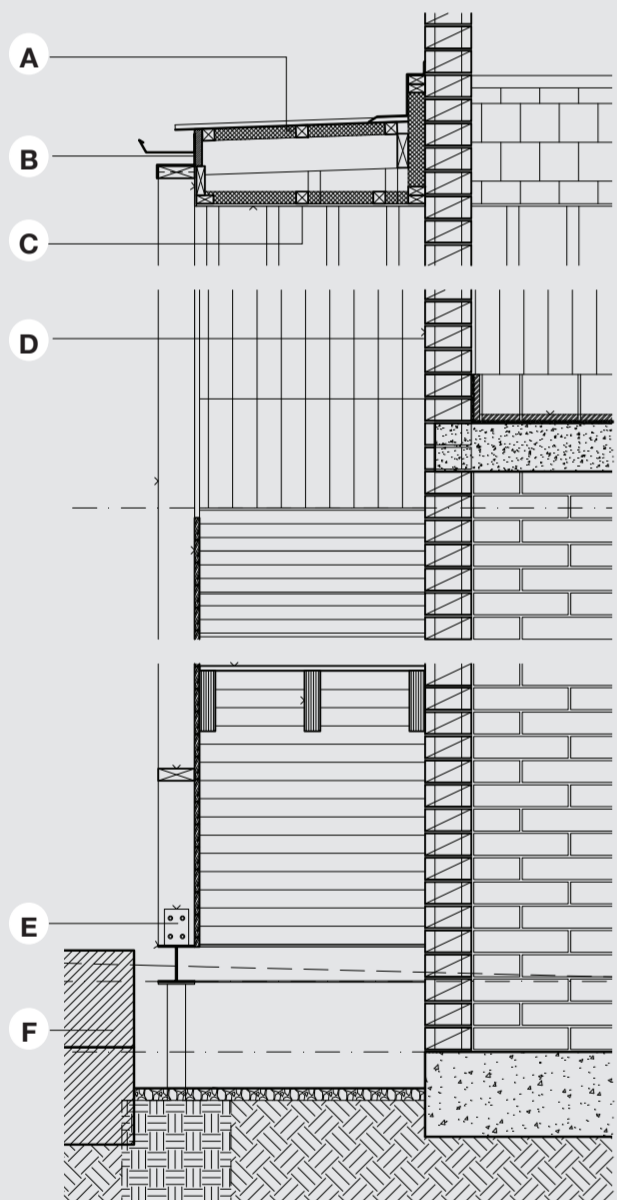
for K & T'S PLACE  
BY NIELSEN JENKINS

## Supply Chain Map



## Facade Section

## Material List



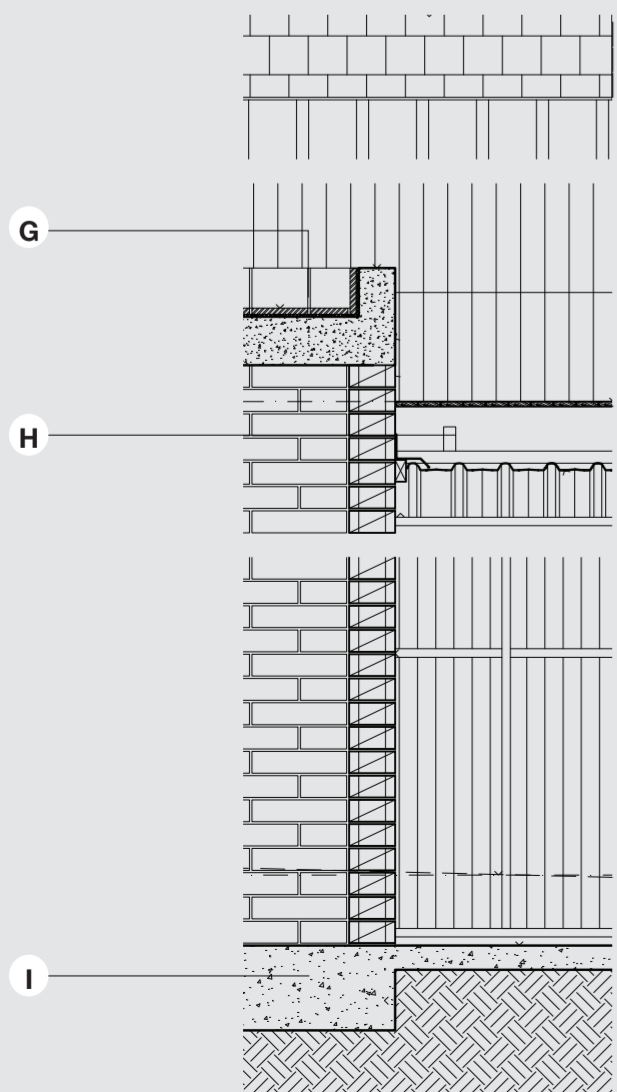
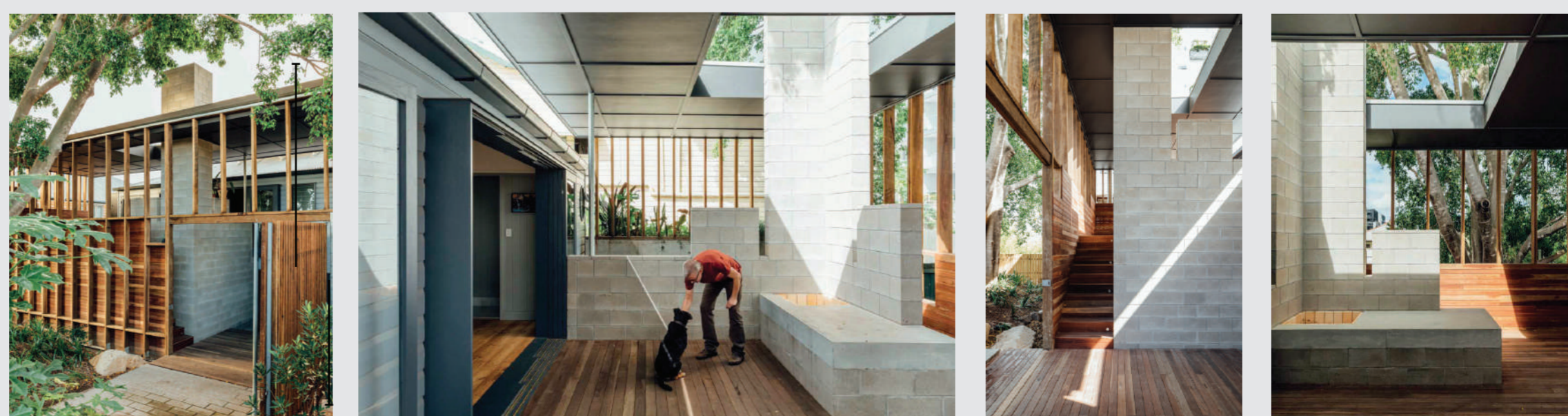
	Product	Manufacturer	Manufacturer Location	Manufacturing Materials	Raw Material Location
<b>A</b>	Profile Metal Sheeting	Lysaght under parent company 'Bluescope'	Steel Manufacturing: Port Kembla, NSW 4505, Australia Steel Paint Lines: Acacia Ridge, QLD 4110, Australia	Carbon Steel (95%): Iron Ore, Coals Metal Coating: Aluminium (Bauxite), Magnesium, Zinc, Silicome	Iron Ore: Hamersley Range WA 6716, Australia (Rio Tinto) Coal: Gunnedah NSW 2380, Australia Aluminium (Bauxite): Weipa, QLD 4874, Australia (Rio Tinto)
<b>B</b>	Fibre Cement Fascia: Scyon Stria 405	James Hardie	Carole Park, QLD 4300, Australia	Cellulose Fibre(from Plantation Pine) Portland Cement (Custom mixture) Sand(Containing Silica) Water	Beerburrum, QLD 4517, Australia Kooragang, NSW 2304, Australia Kinkuna, QLD 4670, Australia
<b>C</b>	Plasterboard Sheet: Gyprock Aquachek	CSR Gyprock	Coopers Plains, QLD 4108, Australia	Gypsum (95%) Paper Lining (100% recycled) Natural Gas	Lake Macdonell, SA 0872, Australia Surat Basin, QLD 4417, Australia
<b>D</b>	Concrete Block: 200mm Half Height	Brick Works (Austral Masonry)	Rochedale, QLD 4123, Australia	Cement, Sand Fine Gravel, Water	Ormeau, QLD 4208, Australia (Austral Masonry Ormeau) Port Kembla NSW 2505, Australia
<b>E</b>	Steel I-Beam: 400-600mm dia	Scott Metals	Woolloongabba, QLD 4102, Australia	Structural Steel: Iron, Carbon (0.05-0.25%) Manganese (1.03%) Zinc (galvanised)	Millstream, QLD 4888, Australia (Tablelands Mining Group) Muldu, QLD 4401, Australia (New Acland Coal Mine)
<b>F</b>	Sandstone Block: Hudson Stone Block	Adbri Masonry	Stapylton, QLD 4207, Australia	Crystalline Silica (67%) Undisclosed (33%)	Angaston, SA 5353, Australia (Penrice Quarry)
<b>G</b>	Fire Bricks: Regal Clay Bricks	Claypave Pty Ltd	New Chum, QLD 4303, Australia	Silica (73%), Aluminum(23%), Calcium, Magnesium, Iron, Potassium, Titanium(<5%)	Weipa, QLD 4874, Australia (Rio Tinto Weipa Mine) Ningi, QLD 4511, Australia (Southern Pacific Sands)
<b>H</b>	Timber Deck Joist: 140x45m	Finlayson's Timber and Hardware	East Brisbane, QLD 4169, Australia	Seasoned Treated Pine, F7	Melawondi, QLD 4570, Australia Imbil, QLD 4570, Australia
<b>I</b>	Concrete Footing: Hanson Slabcrete	Hanson	Coopers Plains, QLD 4108, Australia	Cement, Sand, Aggregate, Water based penetrating sealer	Upper Kedron, QLD 4055, Australia (Hanson Quarries Ferry Grove) Cudgen NSW 2487, Australia (Tweed Sands)

\* Denotes unconfirmed or speculated supplier or source.

## Material thumbnails



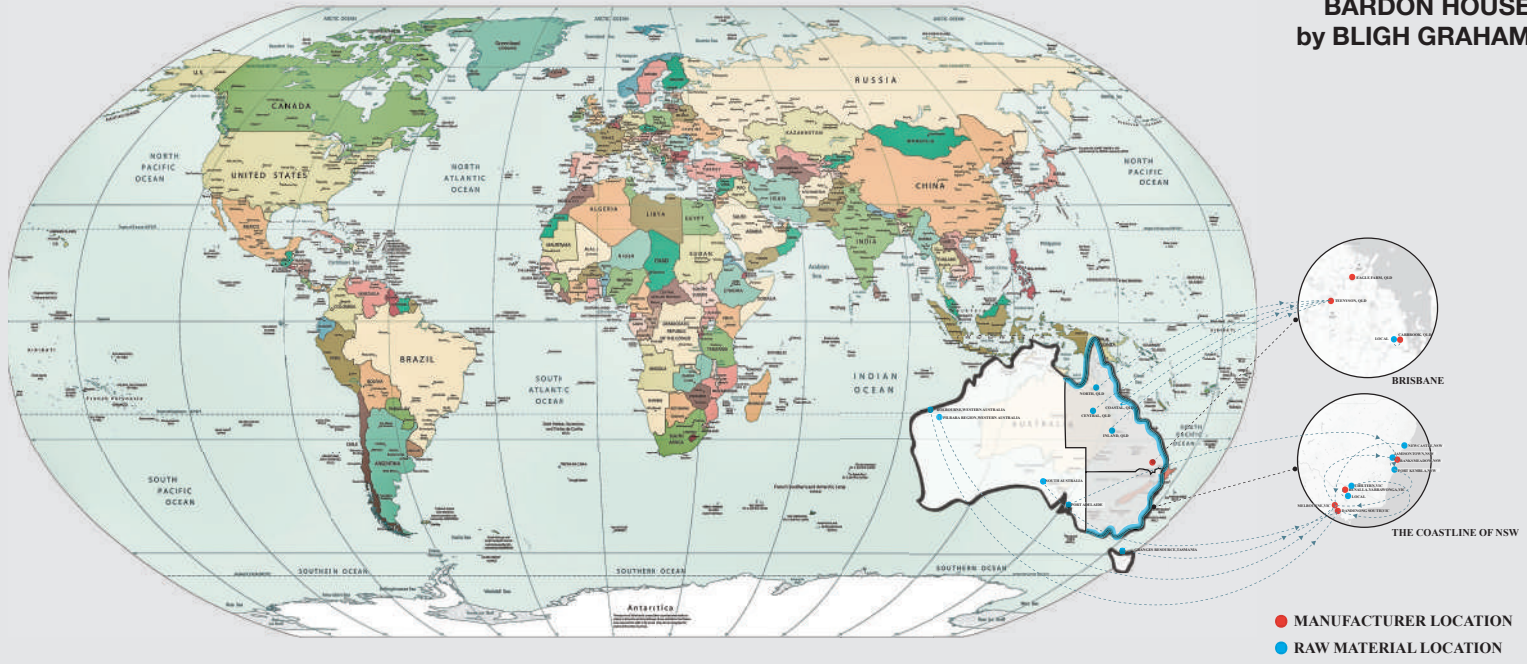
## Building Images



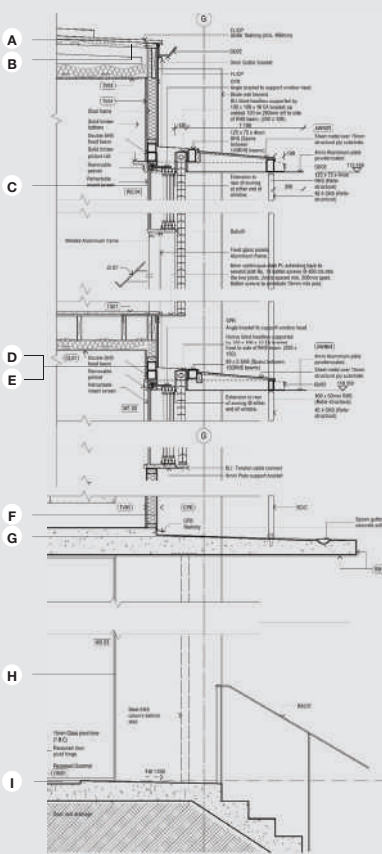


# SUPPLY CHAIN MAP

## BARDON HOUSE by BLIGH GRAHAM



### Facade Section

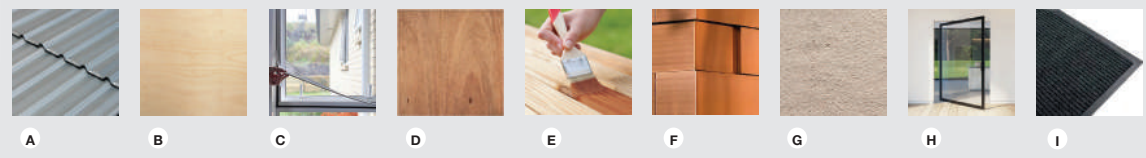


### Material List

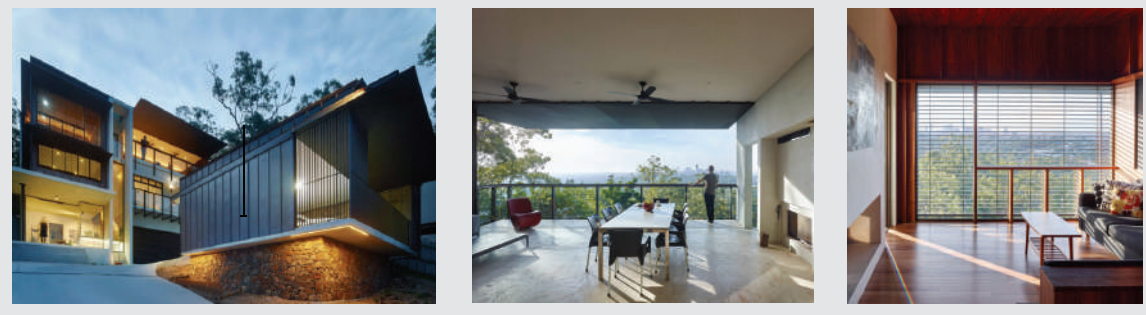
Component	Manufacturer / Product	Manufacturer Location	Manufacturing Materials	Raw Material Location
<b>A Roof Sheet</b>	Bluescope Steel Lysaght - Trimdek 0.42 BMT Zincalume finish	Melbourne, VIC, Australia	Iron ore (Mined Rock) Coal (Mined Rock) Fluxes (Chemical Additives) Scrap Steel (Recycled Material)	Pilbara region, WA, Australia Granges Resource, TAS, Australia Newcastle, NSW, Australia Port Kembla, NSW, Australia
<b>B Roof Lining</b>	Austral Plywoods Plywood Substrate	Tennyson, QLD, Australia	Hoop Pine (Plantation Timber)	North Queensland, Australia Central Queensland, Australia Inland Queensland, Australia Costal Queensland, Australia
<b>C Internal Blind</b>	Centor Retractable Insect Screen	Eagle Farm, QLD, Australia	Polyester fly mesh (Synthetic Fabric) Aluminium (Synthesis Metal) Stainless steel (Synthesis Metal) Brass (Synthesis Metal) Teflon (Synthetic Chemical) Nylon (Synthetic Fabric)	*WOULD NOT DISCLOSE
<b>D Lining</b>	D and R Henderson 16mm Particle board	Benalla, VIC, Australia	Radiata Pine Residues (Timber Residues) Local Sawmill residues (Timber Residues) Recycled wood (Recycled Material) MUF Resin (Thermosetting Polymers) Paraffin Wax	Benalla, VIC, Australia
<b>E Finish</b>	Urethane Coatings PURATHANE Waterborne timber finish.	Banksmeadow, NSW, Australia	Water Toluene (Chemical Additives) Stoddard Solvent (Chemical Additives) Trimethyl (Chemical Additives) Methyl Sebacate (Chemical Additives) 2-Butanone Oxime (Chemical Additives)	Jamisontown, NSW, Australia Port Adelaide, SA, Australia Melbourne, VIC, Australia
<b>F Exterior Cladding</b>	KME Germany KME TECU-Copper "Oxide"	Osnabrück, Deutschland, Germany	Cu-DHP (Recycled Material) Phosphorous (Chemical Additives)	Osnabrück, Deutschland, Germany
<b>G Finish</b>	River Sands Concrete Colour Systems CCS Stain Block	Carbrook, QLD, Australia	Isopropanol (Chemical Additives) Octyltriethoxysilane (Chemical Additives) Ethanol (Chemical Additives) N-butyl acetate (Chemical Additives)	Carbrook, QLD, Australia
<b>H Door Panel</b>	Viridian VTough 15mm Glass pivot door	Dandenong South, VIC, Australia	High quality sand (Mined Rock) Soda ash (Chemical Additives) Limestone (Mined Rock) Saltcake (Chemical Additives) Dolomite (Mined Rock)	Chiltern, VIC, Australia Roebourne, WA, Australia SA, Australia
<b>I Door Matt</b>	Birus Matting Systems Birus "Matador" in recessed frame. 600mm deep x 1200mm long matt rebate drained.	Dandenong South, VIC, Australia	Aluminium (Synthesis Metal) Steel (Synthesis Metal) Nylon (Synthetic Fabric) PVC Backing (Synthetic Polymer)	Dandenong South, VIC, Australia

\* Denotes unconfirmed or speculated supplier or source.

### Material Thumbnails



### Building Images



### Image List

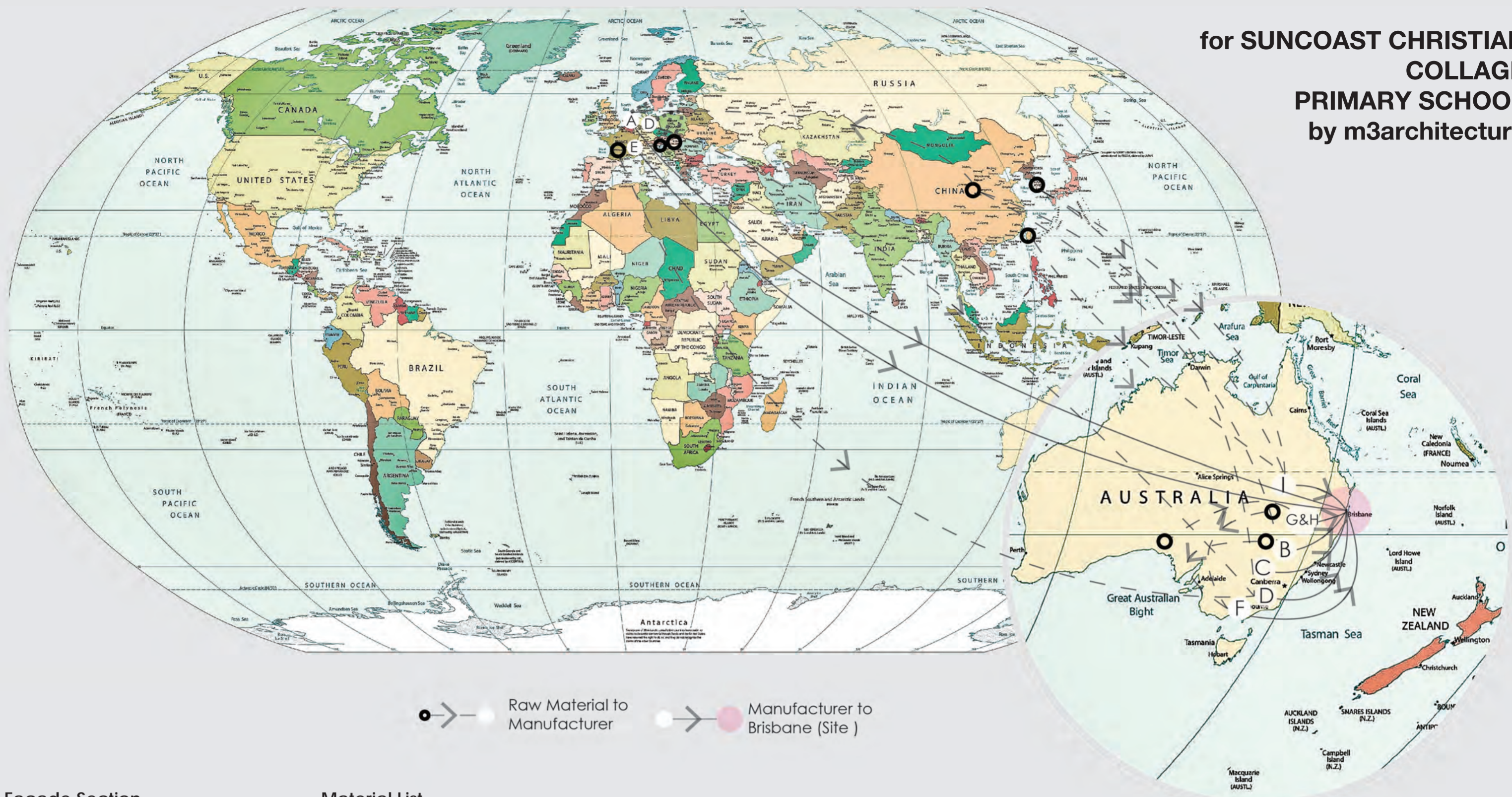
All material thumbnails sourced from: Google Images  
All building images sourced from: "Bardon House," Bligh Graham Architect, <https://blighgraham.com.au/project/bardon-house/>



# SUPPLY CHAIN MAP

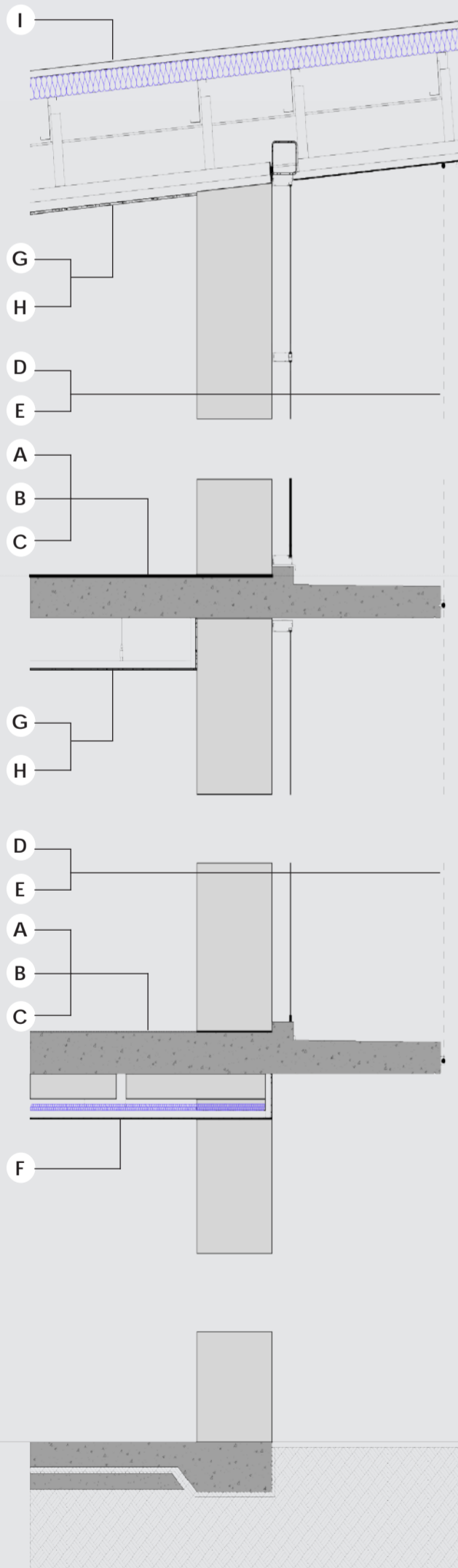
Information compiled by  
Andrew Kwok  
Daniëlle Hanssens  
Srinivas Paivela  
Atee Safaei

for **SUNCOAST CHRISTIAN  
COLLEGE  
PRIMARY SCHOOL**  
by **m3architecture**



● → Raw Material to Manufacturer      ● → Manufacturer to Brisbane (Site)

## Facade Section



## Material List

Component	Manufacturer / Product	Manufacturer Location	Manufacturing Materials	Raw Material Location
<b>A</b> Carpet Option 1	Desso from Tarkett Airmaster Nazca gold	Waalwijk Netherlands	Backing - Polyester fleece (polymer formulation PP Polypropylene Plastic & PET Plastic - Polyethylene Terephthalate)  Secondary Backing - calcium carbonate (lime), Polyolefin based layer with stabiliser, Glass Scrim and Fleece  Pile Fibre- Nylon (Polyamide 6 - PA 6 - PA6.6 Yarn)	Backing: Waalwijk, Netherlands Secondary Backing: Netherlands Pile: c. Croatia & Jiaying, Zhejiang, China
<b>B</b> Carpet Option 2	Milliken Ontera Carpet Tile - Selection TBA	Northmead, NSW, Australia	Yarn product of Aquafil (Recycled nylon) TRACTIONBACK (adhesive free backing, high friction coating) WELLBAC™ (CUSHION-BACKING)	Jiaying, Zhejiang, China Other materials sources: WOULD NOT DISCLOSE
<b>C</b> Carpet Option 3	Interface Carpet Tile - Selection TBA	Minto, NSW, Australia	Recycled Nylon (Yarn) Vinyl Composite - di-isononyl, recycled limestone, polyvinyl chloride (Secondary Backing)  Recycled Polyester - ethylene, recycled limestone, fibre-glass (Primary Backing)	Recycled Materials: Minto, NSW, Australia Raw Material Source: Undisclosed
<b>D</b> Screen Option 1	Carl Stahl X-Tend CXE 316 Stainless Steel Mesh 173x100mm	Siemensstraße 2, 73079 Süßen, Germany	CXE 316 Stainless Steel Mesh (Manufactured stainless Steel)	Germany or Hungary
<b>E</b> Screen Option 2	Ronstan Tensile Architecture with 1.5mm 316 grade stainless steel rope	19 Park Way, Braeside Victoria 3195, Australia	1.5mm 316 grade stainless steel rope (Manufactured stainless Steel)	France and South Korea
<b>F</b> Ceiling Option 1 (ground level)	Jakob Rope Systems 316 stainless steel Webnet 120x209 with 1.5mm 316 grade stainless steel rope	Switzerland*	316 stainless steel Webnet (Manufactured stainless Steel)  1.5mm 316 grade stainless steel rope (Manufactured stainless Steel)	WOULD NOT DISCLOSE
<b>G</b> Ceiling Option 1	Atkar Group Perforated FC Soffit, 6mm	Hallam, Vic, Australia	Asbestos-free fibre cement (James Hardie)  Cellulose fibre (from plantation-grown Radiata Pine trees)  Portland Cement (Cement Sheeting)	Carole Park, QLD, Australia Bathurst, NSW, Australia Portland, NSW, Australia
<b>H</b> Ceiling Option 2	Saint-Cobain CSR Gyprock Rigifone Matrix round perforated plaster-board	Acacia Ridge, QLD, Australia	Gypsum Rock (Description)  Fibreglass (Fibre)  Plastersers, foaming agents, additives (Admixtures)  Cross Fibred Paper (outer layer) Acoustic Tissue	Gypsum: Kevin, SA, Australia Other materials sources: WOULD NOT DISCLOSE
<b>I</b> Roof sheet Option 1	Armstrong Fine Fissured Ceiling Tiles (3570b 600x600)	Slack Creek, QLD, Australia	Mineral Fiber Core - Consists of fibers, perlite, recycled newspaper, and corn starch  Coating - Vinyl Latex Paint	34-54% Recycled Materials: Slacks Creek, QLD, Australia Raw Material Source: WOULD NOT DISCLOSE
<b>I</b> Roof sheet Option 1	Bluescope Steel Lysaght Klok zincalume roof sheeting	Archerfield, QLD, Australia	Aluminium coil (Zinc and Magnesium)	China South Korea Taiwan

\* Denotes unconfirmed or speculated supplier or source.

## Material thumbnails



## Building Images





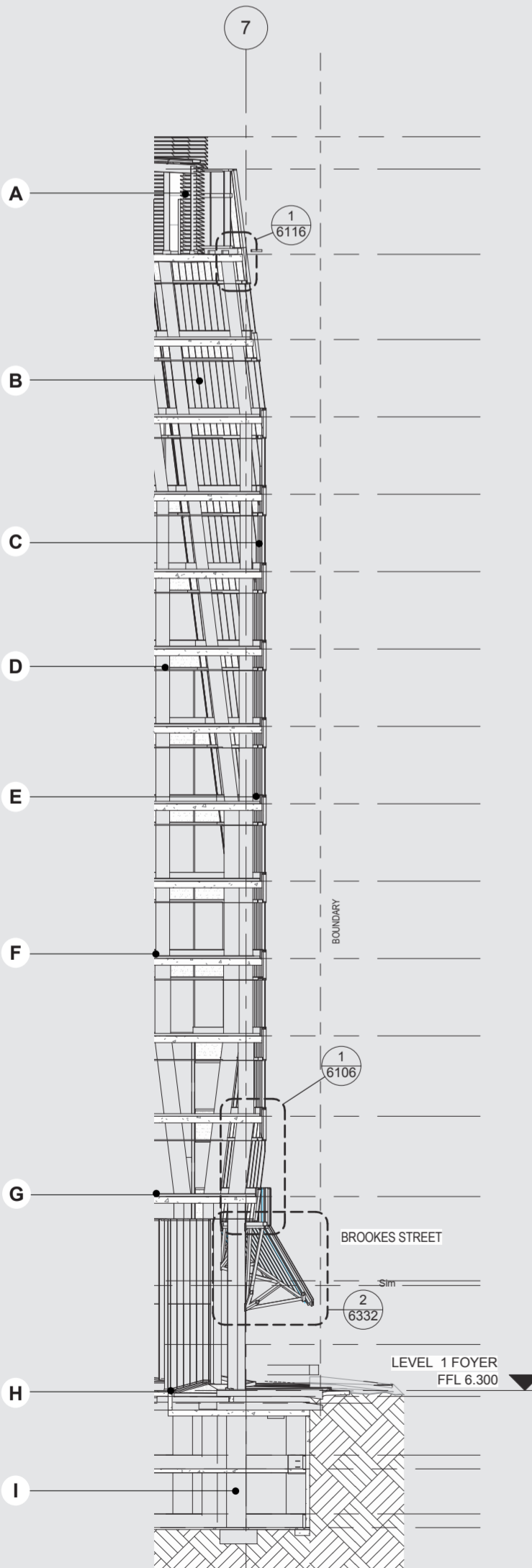
# SUPPLY CHAIN MAP

for AURIZON TOWER  
by JOHN WARDLE



## Facade Section

## Material List



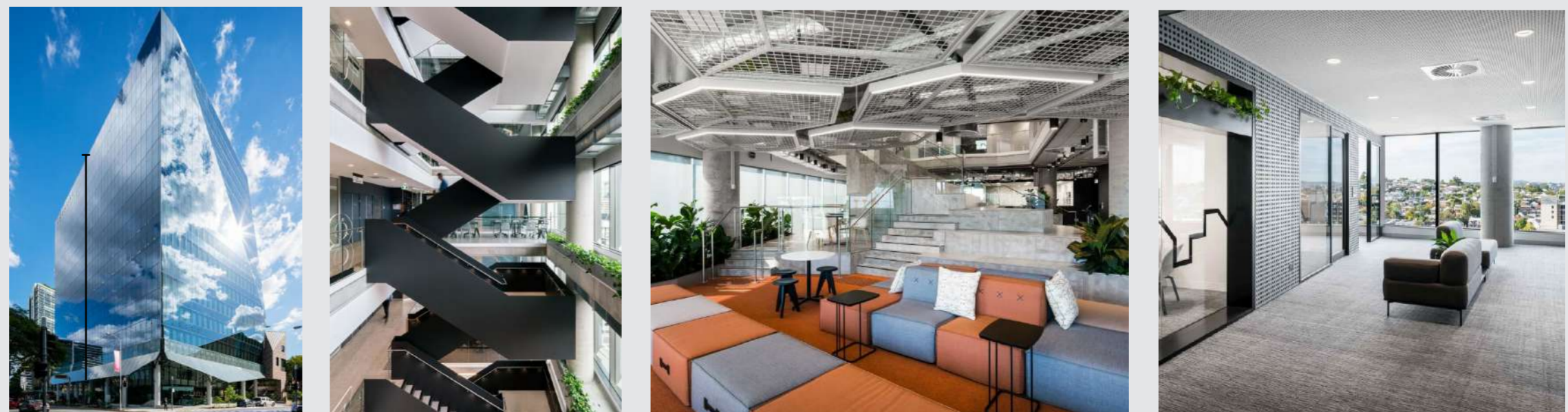
Component	Manufacturer / Product	Manufacturer Location	Manufacturing Materials	Raw Material Location
<b>A</b>	Aluminium Louvres LouverClad/ Nexus series - extruded Aluminum [1]	Bundamba, Brisbane, QLD, Australia.	Bauxite (mined aluminium ore) <sup>[2]</sup> Alumina (refined from bauxite)	Cape York, QLD, Australia. Boyne Island, QLD, Australia.
<b>B</b>	Aluminium Framing LouverClad/ WOULD NOT DISCLOSE	Bundamba, Brisbane, QLD, Australia.	Bauxite (mined aluminium ore) Alumina (refined from bauxite)	Cape York, QLD, Australia. Boyne Island, QLD, Australia.
<b>C</b>	Glass WOULD NOT DISCLOSE	WOULD NOT DISCLOSE	Sand (silica) <sup>[3]</sup> Soda Ash (sodium carbonate) Limestone (Mined rock) <sup>[4]</sup>	Sandy Creek, QLD, Australia. NSW (across state), Australia. <sup>[5]</sup>
<b>D</b>	Acoustic Ceiling OWA - Odenwald Faserplattenwerk GmbH/ OWAcoustic Premium Sinfonia	Amorbach, Germany.	Mineral Wool Fibre (MMVF: Manmade vitreous fibers) Natural binders Optional latices (Acrylics) <sup>[6]</sup>	Germany.
<b>E</b>	Insulation CSR Bradford Insulation/ Acoustigard - Acoustic Glasswool	Coopers Plains, QLD, Australia	Mineral Glasswool Fibre (Amorphous noncrystalline, bio-soluble) Heat-cured Resin (Gold appearance) Mineral oil (Solvent-refined dust suppression agent) <sup>[7]</sup>	Dandenong, VIC, Australia. (Virgin glass cut-offs) Virdian Glass WOULD NOT DISCLOSE (Other raw materials)
<b>F</b>	Carpet Godfrey Hirst/ Feltex "Light Speed" (Nebula)	Geelong, VIC, Australia.	100% BCF Nylon (Fiber) Bioshield® (Antimicrobial treatment) Stain Guard® (Stain Protection) <sup>[8]</sup>	WOULD NOT DISCLOSE
<b>G</b>	Raised Access Floor Plate ASP Access Floors Pty Ltd [Australian owned]/ Iconic Series. <sup>[9]</sup>	Changshou, Jietong, China.	Steel (Mined rock & recycled content) Limestone (Mined rock), Clay (Excavated Soil), Gypsum (Mined rock) Water (Natural/recycled resource) Fly ash (coal by-product) Screws (Metal fixing), Rubber (Amorphous/elastic - isoprene polymer), Zinc (Metal mineral - Galvanizing), Aluminium (lightweight metal) <sup>[10]</sup>	Changshou, Jietong, China. Changzhou, Jiangsu, China. (Remaining raw materials) China. <sup>[11]</sup>
<b>H</b>	Waterproofing Membrane Grace Construction Products/ Aquadard M UVR. <sup>[12]</sup>	Rocklea, Brisbane, QLD, Australia.	Rubber (Polyurethane chemical compound) Resin/Hardener (topcoat-solid/highly viscous substance) <sup>[13]</sup>	WOULD NOT DISCLOSE. <sup>[14]</sup>
<b>I</b>	Concrete Column Boral Concrete/ Smooth off-form.	Browns Plains, Brisbane, QLD, Australia.	Limestone (Mined rock), Clay (Excavated Soil), Gypsum (Mined rock) Slag (steel by-product) Fly ash (coal by-product)  Water (natural resource) Aggregates (granular materials)  Steel reinforcement (Mined rock/admixture). <sup>[15]</sup>	China, Japan, Thailand & Indonesia (Varied suppliers). Japan. Millmerran/Tarrong/Gladstone, QLD, Australia. (3 power stations) Brisbane, QLD, Australia. Ormeau/Narangba/Moreton Bay (sand), Brisbane, QLD, Australia. China/ Australia (varied supplier). <sup>[16]</sup>

\* Denotes unconfirmed or speculated supplier or source.

## Material thumbnails



## Building Images



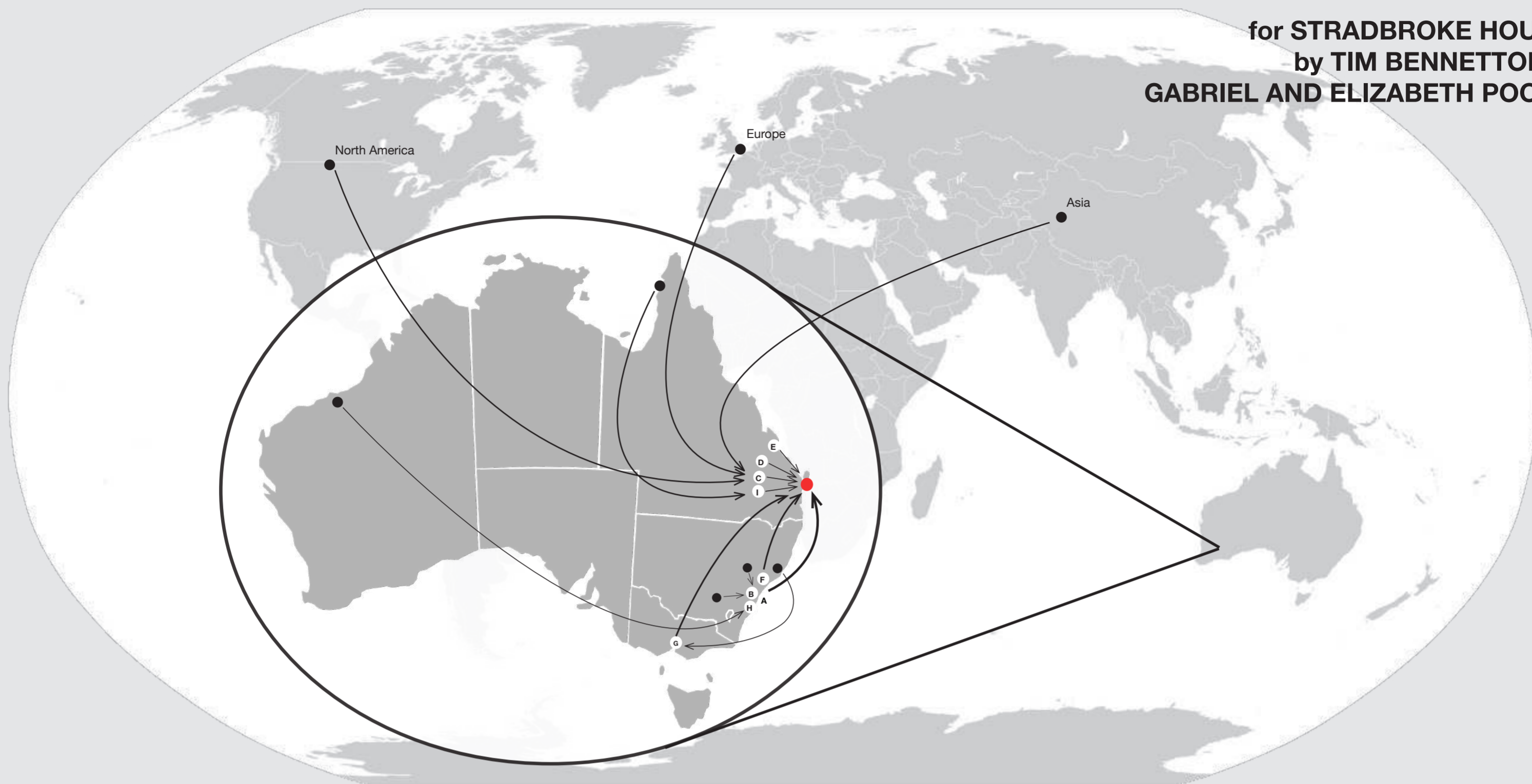
Reference list  
1. LouverClad, "Nexus Series Drainable Louvers." (LouverClad.com). <https://www.louverclad.com/products/nexus-series-drainable-louvers/> (accessed April 8, 2020).  
2. Australian Government - Geoscience Australia. "Bauxite." (Ga.gov.au). <https://www.ga.gov.au/data-pubs/data-and-publications-search/publications/australian-minerals-resource-assessment/bauxite> (accessed April 8, 2020).  
3. Government of South Australia Department for Energy and Mining. "Silica." (energymining.sa.gov.au). [http://www.energymining.sa.gov.au/minerals/mineral\\_commodities/silica](http://www.energymining.sa.gov.au/minerals/mineral_commodities/silica) (accessed April 15, 2020).  
4. NSW Department of Primary Industries. "Limestone." (Resourcesandgeoscience.nsw.gov.au). [https://www.resourcesandgeoscience.nsw.gov.au/\\_data/assets/pdf\\_file/0006/237867/Limestone.pdf](https://www.resourcesandgeoscience.nsw.gov.au/_data/assets/pdf_file/0006/237867/Limestone.pdf) (accessed April 15, 2020).  
5. Pilkington. "Glass - Raw Materials." (Pilkington.com). <https://www.pilkington.com/en/global/about/education/the-float-process/raw-materials> (accessed April 15, 2020).  
6. "Safety Data Sheet: OWA Acoustic." Himmel Interior Systems, accessed 09 April, 2020, <https://www.himmel.com.au/-/media/collector/files/technical-resources/msds/msds-owa-mineral-fibre-2017.pdf>  
7. "Glasswool SUI5." Bradford Insulation, accessed 09 April, 2020, <https://www.bradfordinsulation.com.au/~media/bradford/files/glasswool-suis.pdf>  
8. "Light Speed Versatile Flooring." Godfrey Hirst, accessed 09 April, 2020, [https://www.godfreyhirst.com.au/commercial/sites/default/files/feltex\\_carpets-light\\_speed-specification.pdf](https://www.godfreyhirst.com.au/commercial/sites/default/files/feltex_carpets-light_speed-specification.pdf)  
9. ASP Access Floors, 2019, accessed 09 April 2020. "Environmental product declaration of Icon Access Floor system." 1\*-26.  
10. Ibid, 2019.  
11. Wiszola, Paul & Zlatar, Angela, 2020. "Detailed information on ASP access floors." (Emails and phone calls, April 14, 2020).  
12. Grace Construction Products, 2013. "Aquadard M UVR system". Source: <https://www.polymer.com.nz/wp-content/uploads/2015/03/Aquadard-M-UVR.pdf>  
13. Ibid, 2013  
14. Uta1, T; Kong, R; Poasa, A & Whitehead, S. 2020. "WOULD NOT DISCLOSE INFORMATION." (customer service representatives, email/phone calls).  
15. Boral Concrete, June 2017, accessed 09 April 2020. "Concrete: The Boral Book of Concrete." V2.1. (Australia: Boral), 0-15. Source: [https://www.boral.com.au/sites/default/files/media/field\\_document/The%20Boral%20Book%20of%20Concrete.pdf](https://www.boral.com.au/sites/default/files/media/field_document/The%20Boral%20Book%20of%20Concrete.pdf)  
16. Mulkerin, Tony, 2020, information received 15 April 2020. "Concrete Raw material information." (technical services manager- QLD). Phone/ Email



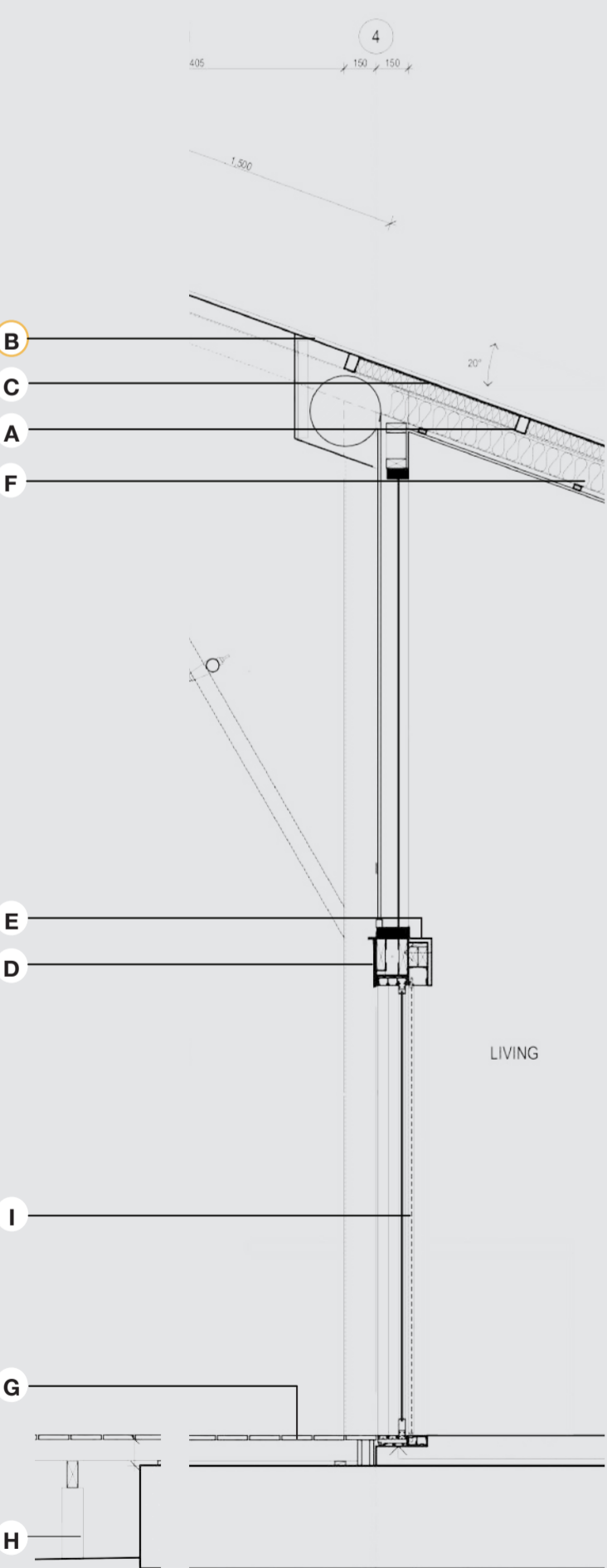
# SUPPLY CHAIN MAP

Information compiled by  
Michelle Lam Yuk King  
Kittidech Marayat  
James Ferguson

for **STRADBROKE HOUSE**  
by **TIM BENNETTON &**  
**GABRIEL AND ELIZABETH POOLE**



## Facade Section



## Material List

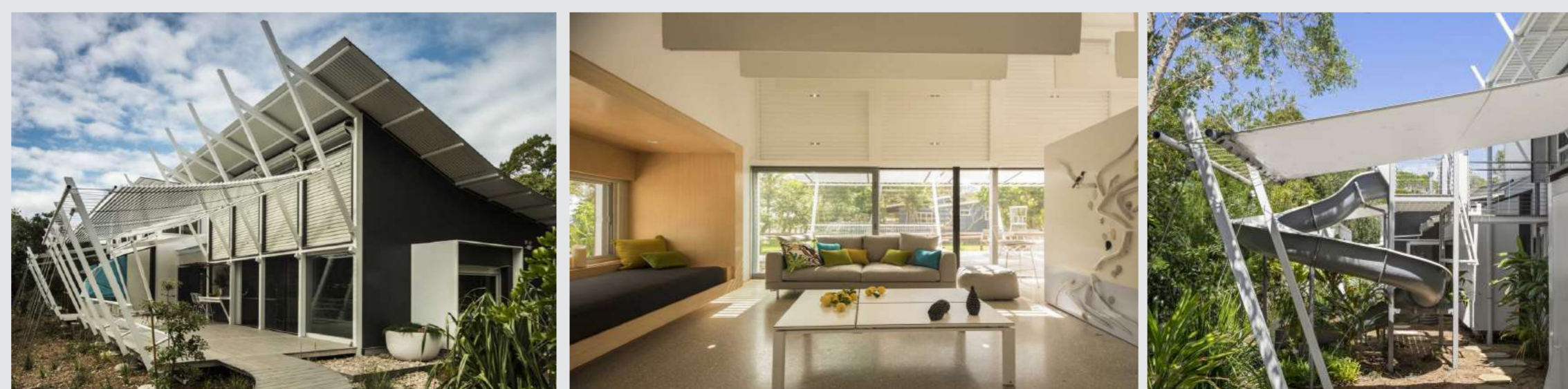
Component	Manufacturer / Product	Manufacturer Location	Manufacturing Materials	Raw Material Location
<b>A</b> Roof framing	BlueScope steel SHS steel section	Port Kembla, NSW, Australia	Iron ore (Minned rock) Coal (Minned rock) Fluxes- limestone (Purifying agent) Scrap	Pilbara Region, WA, Australia Illawarra escarpment, NSW, Australia Marulan, NSW, Australia Australia various locations
<b>B</b> Roof sheeting	BlueScope steel Custom Orb	Port Kembla, NSW, Australia	Iron ore (Minned rock) Coal (Minned rock) Fluxes- limestone (Purifying agent) Scrap	Pilbara Region, WA, Australia Illawarra escarpment, NSW, Australia Marulan, NSW, Australia Australia various locations
<b>C</b> Heavy duty metal roof sarking	Fletcher Insulation Sisalation	Heathwood, QLD, Australia	Aluminium foil Frame retardant adhesive Polyethylene extrusion (Plastic) Fibre glass (Fibre reinforced plastic) Kraft paper (Paper)	Various location across Australia, Europe, Asia, North America
<b>D</b> Fibre cement sheet	James Hardie Australia Easylap	Carole Park, QLD, Australia	Cement (Mixed material) Sand (Quartz) Cellulose Additive	Would not disclose
<b>E</b> Pine timber	Blinds by Peter Meyer	Brendale, QLD, Australia	Natural Cedar	Would not disclose
<b>F</b> Ceiling insulation	Bradford Anticon	North Ryde, NSW, Australia	Glasswool (Fibre of glass ) Thermosetting resin (Polymer )	Australia various locations would not disclose
<b>G</b> Composite timber decking	Modwood Flame Shield	Campbellfield, VIC, Australia	Recycled plastic Non-virgin pine products Fire retardant additive	Sydney, Australia Sydney, Australia would not disclose
<b>H</b> Hot dip galvanised steel decking structure	Bluescope Galvanised Steel	Port Kembla, NSW, Australia	Iron Ore Coal Limestone Zinc	Pilbara, Wa, Australia Illawarra NSW, Australia Marulan, NSW, Australia Australia various locations
<b>I</b> Insect Screen	Centor S1	Eagle Farm QLD, Australia	Aluminium Polyester / PVC	Weipa, QLD, Australia Over seas / Would not disclose

\* Denotes unconfirmed or speculated supplier or source.

## Material thumbnails



## Building Images



Reference list  
1. "Stradbroke House," Tim Bennetton Architects, accessed April 19, 2020, <http://www.timbenetton.com.au/projectdetail/16>  
2. Working Drawings of proposed residence at South Stradbroke QLD, "Tim Bennetton Architects" (Working Drawings, 2015), 43.



# SUPPLY CHAIN MAP

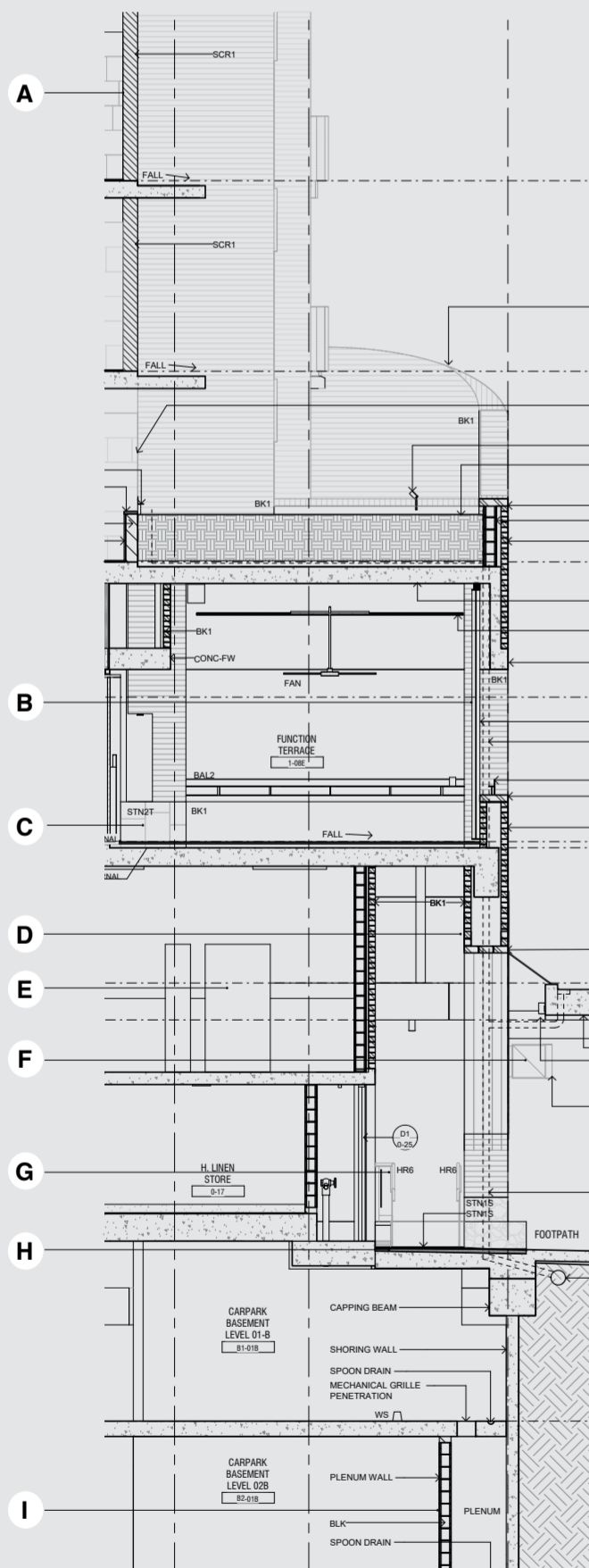
Information compiled by  
Nathalie Bloomfield  
Viraj Mhatre  
Nurul Aina Nadzri

for THE CALILE HOTEL  
by RICHARDS AND SPENCE



## Facade Section

## Material List



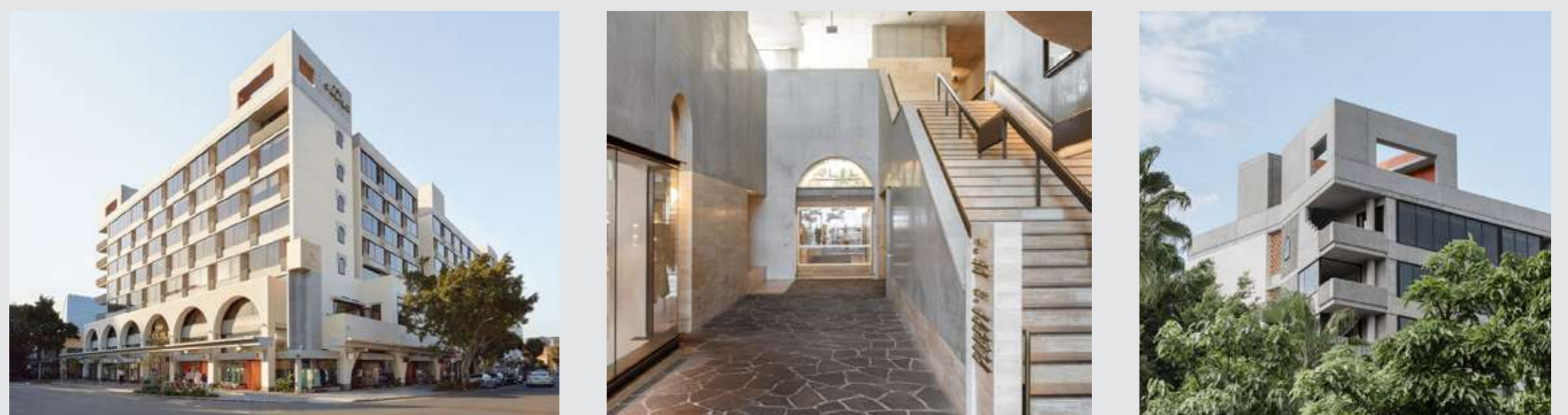
	Component	Manufacturer / Product	Manufacturer Location	Manufacturing Materials	Raw Material Location
A	<b>Custom Clay Block Screen - SCR1</b>	Claypave Extruded Clay Screen	1 Chum St, New Chum QLD 4303 Australia	Australian Clay	Fabricated in Brisbane
B	<b>Linen Curtain Wall - CURT3</b>	Sunbrella HQ Sunbrella Shadow Snow Fabric, Linen	Anderson, South Carolina, USA	Recycled Yarn (50%) (world wide), Sunbrella Virgin Fibre (50%) * raw materials undisclosed	*Global Supply
C	<b>Tavertine Stone Tile - STN2T</b>	Architectural Stone & Wood Smooth finish, square edge, 12mm thickness, filled and unfilled, sizing to suit tile setout	*No response from this supplier. Unable to make contact. Next point of call EcoOutdoor.	*Tavertine Stone	*Quarry located in Turkey
D	<b>Brick Wall - BK1</b>	Austral Bricks La Paloma Brick - 230 x 110 x 75, 290 mm to suit Header	Rochedale, 105 Gardner Rd, Rochedale QLD 4123 Australia	Clay, water, white sand	Ormeau, QLD 4208 Australia ( Austral Masonry Ormeau) Quarry nearby manufacturing facility
E	<b>Stainless Steel Ceiling Baffles - CBAF3</b>	RIMEX Metals Australia Custom stainless steel ceiling baffles in mirror finish, Gold	An-Ho Metal Industrial Co., Ltd. 7Fl., No. 27, Section 1, Chungshan North Road, Taipei, Taiwan, Republic of China	Iron alloy with added elements of chromium, nickel, silicon, manganese, nitrogen and carbon.	J.M.Li Stone Co., Ltd. Lotung Chen, Ilan, Taiwan ( part of Metal Ore Mining Industry)
F	<b>Custom Gold Aluminium Signage - SGNT01</b>	GMG Signs Powder coated custom aluminium signage Colour: to match polished brass, clear coat finish	GMG Signs - Unit 23/23 Ashtan Place, Banyo, QLD 4014 Mingtai Aluminium - 6 Changchun Rd, Zhongyuan Qu, Zhengzhou Shi, Henan Sheng, China, 450065 Dulux - 31 Hillside Road, Glenfield, Auckland 0627, New Zealand.	Aluminium 5005 sheets includes bauxite, magnesium, silica, Iron, copper. Powdercoating includes tinted pigments, resin, curing agents, additives.	*Marradong Western Australia 6390 *Haicheng, Anshan, Liaoning, China
G	<b>Handrail - HR6</b>	George Western & Sons Polished brass tube 38mm diameter Applied Research of Australia - clear armour lacquer sealant	China AROA - 69-75 Barndioota Road, Salisbury Plain, South Australia 5109	Brass Tubing made from Copper and Zinc. Lacquer sealant made from nitro-cellulose, plasticizers, pigments and shellac.	*Escondida, Chile, South America *McArthur, Northern Territory, Australia 0852
H	<b>Crazy Pave Stone Tiles - STN1S</b>	Architectural Stone & Wood Porphyry Crazy Pave Splitface Stone, 20-40mm thickness	*No response from this supplier. Unable to make contact. Next point of call EcoOutdoor.	*Assumed - Porphyry is a natural material mined in Italy as there is a low supply in Australia.	*Italian Porphyry Quarry *56GF+VR Cembra, Cembra Lisignago, Trentino, Italy
I	<b>Structural Concrete Block Wall - BLK</b>	Boral Concrete Australia Concrete footing Block, Grey 190x140mm	LOT 2104 Barker Rd, Gulfview Heights SA 5096	Cement, Lime and Sand	LOT 2104 Barker Rd, Gulfview Heights South Australia 5096

\* Denotes unconfirmed or speculated supplier or source.

## Material thumbnails



## Building Images



## Reference list

Austral Bricks Website, "La Paloma", Austral Bricks, assessed April 1, 2020, <https://australbricks.com.au/>.  
Claypave Website, "Bricks", Claypave, assessed April 15, 2020, <http://www.claypave.com.au/>.  
Footing Blocks, Boral, 2020, <https://www.boral.com.au/products/blocks/concrete-blocks/footing-blocks>.  
George Western & Sons PTY LTD, Brass Tube, 2020, Accessed April 4th 2020, <https://georgeweston.com.au/collections/brass-round-tube>.

GMG Signage Logistics PTY LTD, 2017, Accessed April 8th 2020, <http://www.gmg-signage.com.au/gmg-contact.htm>.  
Mingtai Aluminium Co. LTD, Aluminium 5005 Sheet Specifications, 2019-2020, Accessed 10th April [https://www.mingtai-al.com/aluminum-sheet/5005\\_Aluminum\\_Sheet.html](https://www.mingtai-al.com/aluminum-sheet/5005_Aluminum_Sheet.html).  
Rimex Metal Website, "T22 Range-Coloured Stainless Steel", Rimex Metals Australia, assessed April 1, 2020, <http://www.rimexmetals.com.au/index.html>.  
Sunbrella, "What is Sunbrella Fabric?", 2020, <https://www.sunbrella.com/what-is-sunbrella-fabric>.