



QCY MeloBuds Neo 真无线蓝牙耳机



使用前, 请下载安装QCY手机APP客户端
以获得更便捷的耳机操控体验

功能介绍

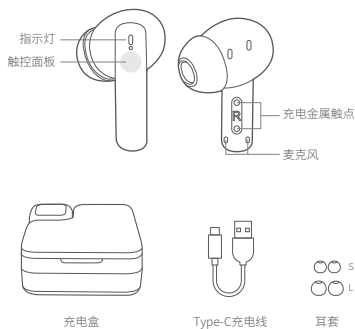


- ② 开机: 充电盒开盖 (耳机在充电盒内)
长按触控面板1.5秒 (耳机在充电盒外)
- ③ 关机: 耳机放入充电盒, 合盖
- ④ 接听/挂断: 双击触控面板
- ⑤ 拒接电话: 长按触控面板1.5秒
- ⑥ 播放/暂停: 双击触控面板
- ⑦ 上一曲: 长按左耳触控面板1.5秒
- ⑧ 下一曲: 长按右耳触控面板1.5秒
- ⑨ 语音助手: 三击左耳触控面板
- ⑩ 低延迟: 三击右耳触控面板
- ⑪ 音量+: 在听音乐时, 单击右耳触控面板
(仅左耳机支持, 若有需要开启此功能, 用户可在APP中开启; 请洽不支持此功能)
- ⑫ 音量-: 在听音乐时, 单击左耳触控面板
(仅右耳机支持, 若有需要开启此功能, 用户可在APP中开启; 请洽不支持此功能)

认识耳机

选择并组装耳套

中耳套适用于大多数人群, 建议从中耳套开始试戴。

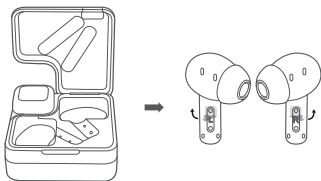


本说明书中的图片均为示意图, 可能与实物有偏差, 请以实物为准。

耳机配对

首次配对方法:

- 取出两只耳机, 同时撕掉耳机上的隔离膜, 再将两只耳机放回充电盒中, 合上充电盒盖子。(此步骤为新机激活)
 - 再次取出两只耳机。
 - 刷新手机蓝牙设备列表, 点击配对QCY MeloBuds Neo, 完成配对。
- * 充电盒打开盖子, 耳机自动开机, 若未自动开机, 请充电后重新尝试。



一键切换配对设备:

(此步骤为A设备切换B设备)
打开盖子, 左右耳机在充电盒中, 长按充电盒按键约3秒, 副耳灯常亮, 主耳白灯闪烁, 此时耳机进入设备配对模式在B设备上搜索QCY MeloBuds Neo, 点击连接。
* 耳机支持同时连接两台设备。

多设备连接

多设备连接方法:

- 耳机开机进入配对状态, 连接设备A后, 从手机端关闭蓝牙。耳机再次进入配对状态。
- 设备B打开蓝牙并点击耳机配对名QCY MeloBuds Neo, 完成配对。
- 设备A上打开蓝牙并点击已配对过的耳机配对名, 配对成功, 此时耳机端同时连接两台设备。



恢复出厂设置

清除配对记录

(此方法用于无法正常连接的情况)
耳机在充电盒内, 充电盒开盖, 长按充电盒按键10秒, 耳机红灯闪5次, 闪烁停止后复位完成。
* 恢复出厂设置后用首次配对的方法连接即可正常使用。

操作说明



- 请正确佩戴左右耳机, 戴上耳机后可微微转动调整, 找到个人舒适且稳固的位置。
- 麦克风风口往下, 朝嘴巴方向。
- 错误佩戴耳机会导致通话, 听觉都受到不同程度的影响。

耳机充电

充电中红色灯长亮, 充满电后灯熄灭

充电盒充电

充电中: 电量指示灯闪烁
充满电: 电量指示灯熄灭

充电盒电量提示

充电盒有电: 充电盒开盖, 电量指示灯长亮3秒后熄灭
充电盒低电: 充电盒开盖, 电量指示灯闪烁3次后熄灭

产品有害物质名称及含量

部件名称	有害物质					
	铅 (Pb)	汞 (Hg)	铜 (Cd)	六价铬 (Cr(VI))	多溴联苯 (PBB)	多溴二苯醚 (PBDE)
外壳	○	○	○	○	○	○
电路板组件	×	○	○	○	○	○
电池	○	○	○	○	○	○
充电线	×	○	○	○	○	○
附件	○	○	○	○	○	○

本表格依据SJ/T 11364的规定编制
○: 表示该有害物质在该部件所有均质材料中的含量均在GB/T 26572规定的限量要求以下。
×: 表示该有害物质至少在该部件的某一均质材料中的含量超出GB/T 26572规定的限量要求。

使用年限
如本手册所述, 在正常使用条件下, 本产品的环保使用期限为10年。
在此期间, 产品不会泄露任何危险物质, 本产品可以回收, 必须按照当地法规处理。



FAQ

- 1.Q: 只有一只耳机有声音怎么办?
A: 将两只耳机放回充电盒合盖, 再重新取出, 查看双耳是否都有声音, 若还是只有单只耳机有声音, 请对两只耳机恢复出厂设置。
- 2.Q: 手机提示无法连接怎么办?
A: 将手机上的配对记录删除, 删除后重新进行搜索配对连接即可。
- 3.Q: 听歌/通话声音怎么解决?
A: 安卓手机在蓝牙连接名字的右边有个设置图标, 点击进入, 关闭手机音频和媒体音频, 再重新开启, 若还是无声, 请将耳机重新与手机配对连接。
- 4.Q: 为什么视频/游戏有延迟?
A: 受使用环境、网络、手机编解码等因素的影响, 会引起手机传送音频数据到耳机时有不同程度的延迟。
- 5.Q: 听到的声音卡顿/断续怎么解决?
A: 在使用时若周围有大量的Wi-Fi、5G/4G信号、大功率电器等等产生干扰, 可能会引起卡顿、断续的情况, 换个环境或者重新配对连接就可以解决了。

若有售后服务需求, 请联系客服

电话: 4008-306-708

网址: www.qcy.com

制造商: 东莞市和乐电子有限公司

地址: 广东省东莞市道滘镇粤晖路325号

提示

1. 使用产品前请仔细阅读本使用说明书并请妥善保管;
2. 首次使用时, 请先将本产品充满电;
3. 如果产品长期(超过2个星期)不用, 请对其充电;
4. 必须选择正规厂家生产且经过国家CCC认证的充电器;
5. 若手机无法搜索到蓝牙耳机, 请将蓝牙耳机重新进入配对模式或将蓝牙耳机恢复出厂设置, 若手机程序出错, 请把手机蓝牙关闭再开启或重启手机。

电池安全

1. 请勿拆解或改装电池、插入异物、置入高温、或浸入水或其他液体中, 以免引起电池漏液、过热、起火或爆炸。电池只能由制造商更换。
2. 请勿跌落、挤压或穿刺电池。避免让电池遭受外部的压力, 从而导致电池内部短路和过热。

- 请勿以任何理由拆除或维修改装耳机, 否则可能会导致起火, 电子击穿甚至彻底损坏本产品;
- 请勿将产品置于温度过低或过高(0°C以下或45°C以上的环境温度下);
- 请避免靠近儿童或动物的眼睛使用产品指示灯;
- 请勿在雷暴天气下使用该产品, 雷暴可导致本产品工作不正常, 并增加触电的危险;
- 请勿用油及其他挥发性液体擦拭本产品;



长时间使用耳机可能会造成听力损害, 请合理安排使用时间。



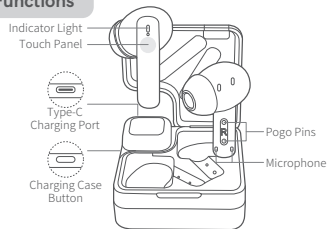
QCY MeloBuds Neo

True Wireless Earbuds



Download the QCY app to experience the full range of features such as ambient sound modes, EQ tuning, firmware updates, and more.

Functions

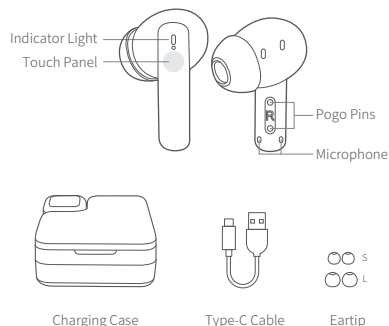


- ① Power On: Open the charging case (with earbuds inside) and long-press the touch panel for 1.5 seconds (if earbuds are outside the case).
- ② Power Off: Place the earbuds into the charging case and close the lid.
- ③ Answer/End Call: Double-tap the touch panel.
- ④ Reject Call: Press and hold the touch panel for 1.5 seconds.
- ⑤ Play/Pause: Double-tap the touch panel.
- ⑥ Previous Track: Press and hold the left earbud touch panel for 1.5 seconds.
- ⑦ Next Track: Press and hold the right earbud touch panel for 1.5 seconds.
- ⑧ Voice Assistant: Triple-tap the left earbud touch panel.
- ⑨ Low Latency Mode: Triple-tap the right earbud touch panel.
- ⑩ Volume +: Single-tap the right ear touch panel.
(Note: Note: This function is disabled by default. If needed, users can enable it in the app; this function is not supported during calls.)
- ⑪ Volume -: Single-tap the left ear touch panel.
(Note: Note: This function is disabled by default. If needed, users can enable it in the app; this function is not supported during calls.)

Overview

Choose Your Eartips:

Please try medium eartips first as they fit most people.

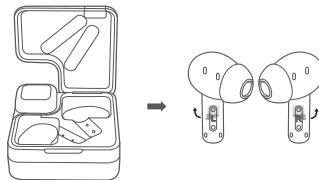


Note: The images in this manual are for reference only and may vary from the actual product. Please refer to the actual product for accuracy.

Bluetooth Pairing

Initial Pairing:

1. Take out both earbuds, peel off the isolation film from each, and place them back into the charging case. Close the lid to activate the new device.
 2. Retrieve both earbuds again.
 3. Refresh your phone's Bluetooth devices, pair with QCY MeloBuds Neo, and complete the setup.
- *Opening the charging case turns on the earbuds. If not, try again after charging.



One-Click Device Switching:

(This step switches from Device A to Device B.)

Open the lid, keep both earbuds in the charging case, and press the case button for about 3 seconds. The white light on the secondary earbud will remain on, while the white light on the primary earbud will flash. This indicates that the earbuds are now in pairing mode. On Device B, search for "QCY MeloBuds Neo" and click to connect.

*The earbuds support connecting to two devices simultaneously.

Multi-Device Connection

Steps for Multi-Device Connection:

1. Power on the earbuds to initiate pairing. After connecting to Device A, turn off Bluetooth on the phone. The earbuds will enter pairing mode again.
2. Enable Bluetooth on Device B and select "QCY MeloBuds Neo" for pairing.
3. On Device A, turn on Bluetooth and click the paired earbuds' name. Successful pairing means the earbuds are now connected to both devices simultaneously.



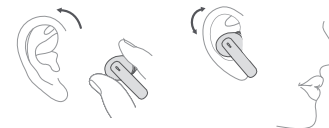
Factory Reset

Clearing Pairing Records (Use in case of connection issues)

Place the earbuds in the charging case, open the lid, press and hold the button on the charging case for 10 seconds, and the red light of earbuds will flash 5 times, indicating the reset is complete after the blinking stops.

* After the factory reset, follow the initial pairing method to connect for normal usage.

User Guide



1. Properly wear the earbuds on both the left and right sides. After wearing them, you can make slight adjustments by rotating to find a personally comfortable and secure position.
2. Ensure the microphone opening is facing downward towards the mouth.
3. Incorrect earbuds placement may affect both calls and hearing to varying degrees.

Earbuds Charging

The red light remains on during charging, and the light turns off after full charge.

Charging Case Charging

During charging: The battery indicator light flashes.

Fully Charged: The battery indicator light turns off.

Charging Case Battery Status

Sufficient battery: When the charging case is opened, the battery indicator light stays on for 3 seconds before turning off.

Low battery: When the charging case is opened, the battery indicator light flashes 3 times before turning off.

Warranty

Your QCY product purchase is covered by a one-year limited manufacturer warranty from the date of delivery. Please ensure you retain your purchase receipt. If any defects occur due to quality issues within the warranty period, kindly bring both the warranty card and the purchase receipt to the authorized dealer for complimentary replacement services.

Model Number:
Date of Purchasing:
User's Name:
User's Phone:
User's Address:
Shop's Name:
Shop's Address:
Comments:

The manufacturer's warranty is void under the following circumstances but not limited to:

- Improper or inadequate maintenance or modification.
- Accident, misuse, abuse, contamination, or other external causes.
- The use of unspecified adapter and accessories.
- Malfunctions or damages resulting from natural disasters, earthquakes, lightning, abnormal voltage, or environmental factors.
- Damages that occur as a result of one's failure to follow the instructions.

FCC Statement

This equipment has been tested and found to comply with the limits for a Class B digital device, pursuant to Part 15 of the FCC Rules. These limits are designed to provide reasonable protection against harmful interference in a residential installation. This equipment generates uses and can radiate radio frequency energy and, if not installed and used in accordance with the instructions, may cause harmful interference to radio communications. However, there is no guarantee that interference will not occur in a particular installation. If this equipment does cause harmful interference to radio or television reception, which can be determined by turning the equipment off and on, the user is encouraged to try to correct the interference by one or more of the following measures:

- Reorient or relocate the receiving antenna.
- Increase the separation between the equipment and receiver.
- Connect the equipment into an outlet on a circuit different from that to which the receiver is connected.
- Consult the dealer or an experienced radio/TV technician for help.

This device complies with part 15 of the FCC Rules. Operation is subject to the following two conditions:

(1) This device may not cause harmful interference, and (2) this device must accept any interference received, including interference that may cause undesired operation.

Changes or modifications not expressly approved by the party responsible for compliance could void the user's authority to operate the equipment.

Safety Precautions

1. Please carefully read and retain this user manual before using the product.
2. If the product is not used for an extended period (more than 2 weeks), please recharge it.
3. You must choose a charger produced by a legitimate manufacturer and certified by the national safety authority.
4. If your phone cannot detect the Bluetooth earbuds, either re-enter pairing mode or perform a factory reset on the Bluetooth earbuds. If there is a phone program error, close and reopen Bluetooth on the phone or restart the phone.
5. Do not disassemble or modify the battery, insert foreign objects, expose it to high temperatures, or immerse it in water or other liquids to prevent battery leakage, overheating, ignition, or explosion. Battery replacement should only be done by the manufacturer.
6. Do not drop, crush, or puncture the battery. Prevent external pressure that may lead to internal short circuits and overheating.
7. Do not dismantle or modify the earbuds for any reason, as it may result in fire, electronic breakdown, or permanent damage to the product.
8. Do not expose the product to extremely low or high temperatures (below 0°C or above 45°C).
9. Do not put the product indicator light near the eyes of children or animals.
10. Do not use the product during thunderstorms, as it may cause abnormal operation and increase the risk of electric shock.
11. Do not use oil or other volatile liquids to clean the product.
12. Please do not use this device for long periods of time and at high volume, as there is a risk of hearing damage.

Manufacturer: Dongguan Hele Electronics Co., Ltd.
Address: No. 325 Yuehui Rd. Daojiao Town Dongguan City
Guangdong Province China

Notice: This marking indicates that this product should not be disposed with other household wastes throughout the EU. To prevent possible harm to the environment or human health from uncontrolled waste disposal, recycle it responsibly to promote the sustainable reuse of material resources. To return your used device, please use the return and collection systems or contact the retailer where the product was purchased. They can take this product for environmental safe recycling.

