

## Computer Panel High Speed Saw NPC380

Nanxing Machinery  
Guangdong China



### Description

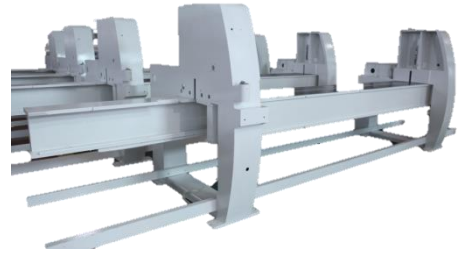
- ✓ Saw carriage by 2kw servo motor and moved via rack and pinion automatically moved to fit based on the width of panel, reduces travel distance. Max forward speed up to 90m/min, backward speed up to 120m/min;
- ✓ Pressure beam automatically self-adjusted according to the total height of panels, to shorten the travel range, hence higher efficiency;
- ✓ Powerful software so easy to use, including managing the work process with detailed reports, simulating cutting patterns, showing any error message, printing bar code and many more advantages, also user friendly HMI, making whole machine much reliable.

## Details

---

### 1. Machine frame

- Machine body constructed by high tensile strength steel, towards best finish by advanced welding with robots, further underdone with heat treatment, finally completed by CNC 5-axis milling to perfect precision, to ensure its highest quality and durability.



### 2. Professional assembly line

- Assembly is final and important step for better machine performance. Nanxing's professional assembly lines from machine body to small electrical components were by experienced technicians that guarantee machine standardization and performance.



### 3. Quality control

- Advanced measuring equipment and strict QC system also help to make sure the final machine we offer to our customers are of high quality;



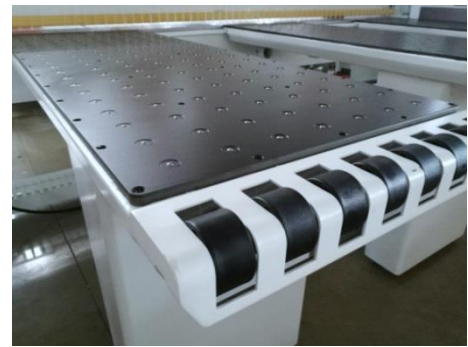
### 4. Steel table plate

- High stiffness steel plate with long service life, precision up to  $\pm 0.03\text{mm}$ , reducing the possible maintenance costs.



### 5. Air float feed table

- Full of air steel balls on table surface with a fan ensures a constant ease of panel stacks movement, the black table plate is rigid and wear proof for longer service life.
  
- Separate 3 pipes connected to 3 float tables with a 2.2kw air blower beneath the table supplies sufficient air. Flow rate: 5.2m<sup>3</sup>/min.



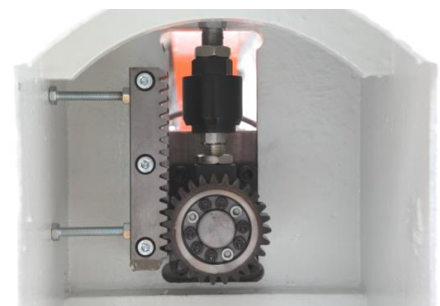
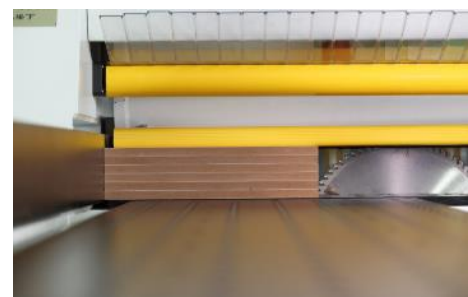
### 6. Side operation rod

- An extra operating rod on side guarantees the continuous cutting, operator could start the cutting without approaching the IPC in the process.



### 7. Pressure beam

- Pressure beam automatically self-adjusted according to the total height of panels, to shorten the travel range, hence higher efficiency.
- Single pressure beam makes evenly pressure applied on the whole work piece surface, increase the pressure apparently, thus reduce the chipping of work piece edge
- Movement of pressure beam by precise rack and pinion on both sides.



### 8. Hand protector

- A protective device will fall down before cutting, and rise after cutting, machine would stop emergently if there is something underneath, that keeps operators from hurt.



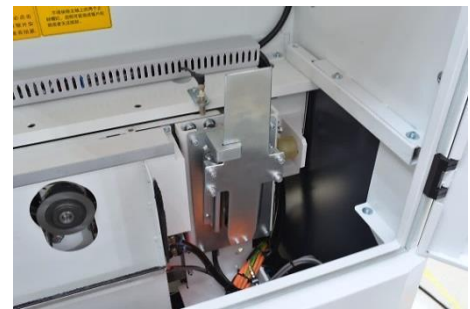
### 9. Piano dust cover

- Piano type dust cover provides a completely enclosed blade guard and prevents flying dust and chips.



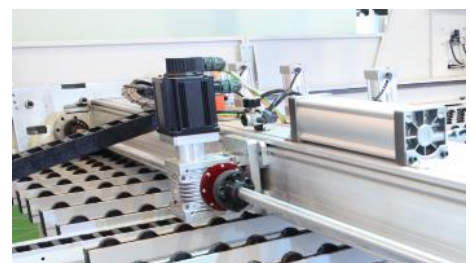
### 10. Side alignment

- Device fixed within saw carriage to push from side of board when running to cut, even for thin and soft board, at the same time to guide alignment for perfect square cut.



### 11. Gripper

- Firm joist steel supporter on both sides, precise positioning.
- Pneumatically controlled 9 grippers (standard configuration); Option with 13 pcs grasp work piece tightly without displacement during feeding, improving cutting precision effectively.
- Accurate and smooth movement of feeding unit is ensured by 2kw servo motor and long rack and pinion on both sides. Gear box with Germany brand.





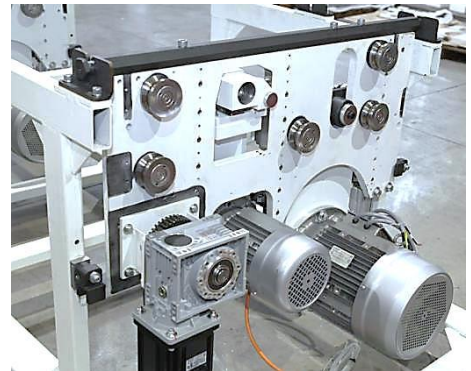
### 12. Anti- dropping device.

- The design prevents saw carriage from struck due to small work piece dropping, hence guarantees the stable working of saw carriage.



### 13. Saw unit

- Saw carriage by 2kw servo motor along rack and pinion, automatically moved to fit based on the width of panel, reduces travel distance. Max forward speed up to 90m/min, backward speed up to 120m/min.
- Both main saw and scoring saw with independent movements of up and down, also main saw automatically self-adjusted minimizing the lifting height for efficiency besides making best finish. Guiding rail with Germany brand for better stability.
- Quick exchange of main saw blade, ideal design for operator.



⚙ Main saw is 15kw, 4500rpm/min,  
inner  $\phi$  60mm outer  $\phi$  380mm

⚙ Scoring saw is 4300rpm/min  
inner  $\phi$  45mm outer  $\phi$  200mm

**Tip:** Saw blades are not included.



### 14. Dust collection

- Reduce flying chips and dust, convenient working condition contributes to extend service life.  
 $\phi$ 150mm\*3



**15. Automatic lubrication system**

- The automatic lubrication system greases the main components automatically that reduces the need of maintenance by operators.



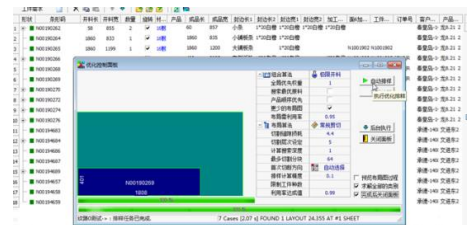
**16. Machine control**

- User-friendly HMI IPC coordinated with USB interface, network card, mouse and keyboard for easy operation; Chinese and English are available.
- Controlled by PLC Windows operating system and Nangxing's professional computer saw cutting software.



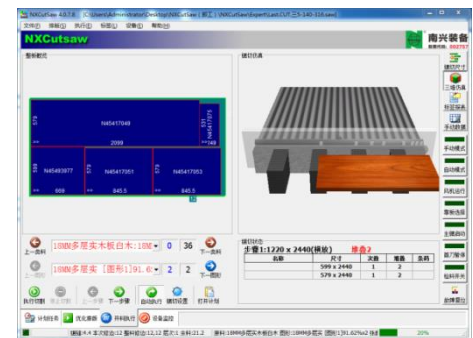
**17. Optimizing software NXParcto**

- Professional optimizing software equipped within machine for high handling efficiency and convenient operation, other worldwide popular software also possible to be applied.



**18. Operation software**

- Powerful software so easy to use, including managing the work process with detailed reports, simulating cutting patterns, showing any error message, printing bar code and many more advantages, also user friendly HMI, making whole machine much reliable.
- Additional function for re-work of any particular piece (scanner optional), a good helper for customized furniture production, completely solved problem raised from possible setting mistakes and occasional errors caused by operator.



### 19. Control cabinet

- Most of electric components of the machine are international brand for high quality and generality.

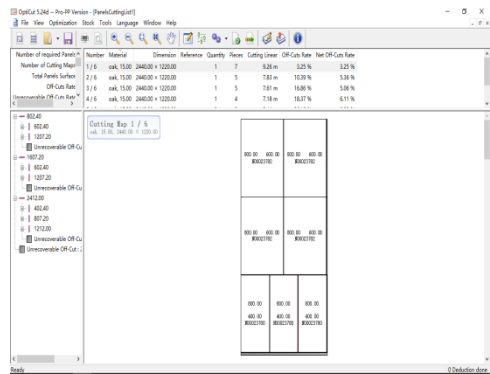


## Option

### 1. Printer



### 2. Opticut software



## Technical Data

<b>Cutting</b>	Max. cutting length	3,800mm
	Max. cutting thickness	90mm
<b>Main saw</b>	Motor power	15kw
	Rotating speed	4,500rpm/min
	Saw blade diameter	Φ380mm (maxΦ400)
	Saw blade shaft diameter	Φ60mm
<b>Scoring saw</b>	Rotating speed	4,300rpm/min
	Saw blade diameter	Φ200mm
	Saw blade shaft diameter	Φ45mm
<b>Saw carriage</b>	Motor power	2kw
	Forward speed	90m/min
	Backward speed	120m/min
<b>Feeding</b>	Automatic feeding motor	2kw
	Max. feeding speed	85m/min
<b>IPC</b>	15" Windows 7	USB port: 4 pcs
<b>Air Requirement</b>	0.6 MPa	
<b>Dust extraction</b>	Φ150mm*3;	28m/min
<b>Power supply</b>	AC3P380V/50Hz	
<b>Power</b>	Total power	23kw
<b>Overall size</b>	Length *Width *Height	7,400 x 5,900 x1,800mm
<b>Net weight</b>	6,600kg	

*\*Thanks for the attention!*

*The company continuous to improve the product specifications and design details, the specifications are shown here subject to change without notice. 80910*