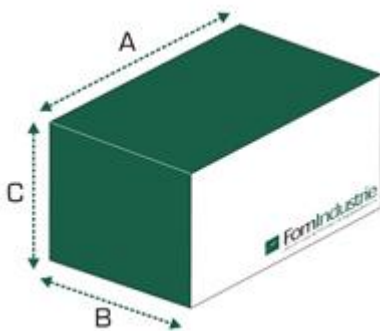


# BLITZ ALVA 500 M

Double head sawing machine with  $\varnothing$  500 mm tungsten carbide blades with motorized movement of the mobile head and pneumatic control of the head tilting



CE



Taglio Utile	A (mm)	B (mm)	C (mm)	Kg
m. 4	5700	1670	1950	1550
m. 5	6650	1670	1950	1830
m. 6	7750	1670	1950	2140

Ingombro rulliera testa mobile A + 3.100

Power supply	Total power installed	Air consumption for work cycle	Working pressure
3F - 380÷415 V - 50 Hz	5,4 kW	40 NL/cycle	7 bar



## Technical specifications:

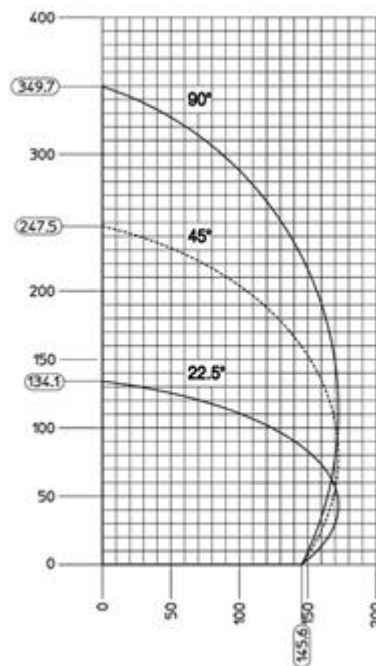
- Head tilting: 90°- 45°- 22.5° and intermediate angles achieved using stops at the front of the machine, protected against chips.
- No. 2  $\varnothing$  500 mm tungsten carbide saw blades
- Blade centering hole  $\varnothing$  32 mm with adapter ring
- Hydraulic tungsten carbide saw blade feed (adjustable blade exit speed – quick return)
- Direct motor to blade transmission
- Blade motors, three-phase 3HP (2.2 kW) – 2800 rpm Euro voltage 230/400V– 50Hz; 275/480V – 60 Hz
- $\varnothing$  28 mm saw blade shaft
- First head fixed, second head mobile with motorised automatic positioning
- Blade tilting 90°/ 45°/ 22.5° and intermediate angles by means of front-mounted mechanical stops suitably protected from chips
- Cutting zone guards
- No. 2 pneumatic vertical vices
- No. 3 pneumatic horizontal vices
- Customised devices to clamp special profiles (on request)
- Movable head roller table 2,4 m
- Atomised cutting lubrication kit
- Electrical switchboard separate from pneumatic one, both positioned vertically and easily accessible for inspection
- Set up for the extraction of chips and fumes
- Large size swarf collection box to allow easy collection
- Set up to take motorised conveyor belt for collecting offcuts and a rear motorised chips collection conveyor belt
- Real time control of functions by PLC
- Membrane type keypad protected from chips and sawdust
- Working pressure: 7 bar
- Compact Flash card reader

## Standard accessories:

- No. 2 Ø 500 mm tungsten carbide saw blades
- Cutting zone guards
- 1st retractable pneumatic intermediate profile support
- Electronic profile height measuring device
- Movable head roller table 2,4 m
- No. 3 horizontal vices
- Spray mist blade lubrication system
- Set up for the extraction of chips and fumes
- No. 1 Compact Flash
- Compact Flash card reader

## CUTTING DIAGRAM

See attachments



## Control unit TEX COMPUTER

### MICROVISION SMART (M version)



#### Electronic equipment description:

- Industrial type numerical control
- Alphanumeric keyboard with 52 keys and graphic display, dimensions 130 x 75 mm

#### Software description:

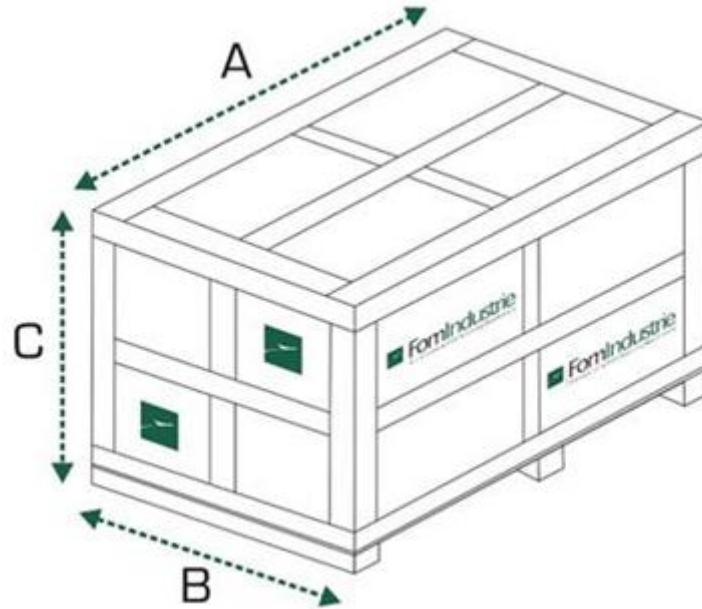
- Profile height with automatic compensation for tilted cuts (archives of 100 profiles save on Compact Flash)
- Head positioning with piece counter and cutting disabled function
- Compensation for extrusion tolerances and/or profile paint
- Formula and type program with 2 variables, H-height and L-width (archives of 100 formules and 100 typologies, save on Compact Flash)
- Software for manual cutting list
- Imports and exports cutting list from the office with Compact Flash
- Label printing device (optional)
- Software to install on PC for cutting list import

## Optionals:

- Additional charge for special three-phase voltage and cycles
- Additional charge for special power supply with transformer
- Additional charge for electrical version UL-CSA
- Additional charge for EAC (Eurasian Conformity) certification
- Additional horizontal vice
- PORTER Infeed roller table + vertical rollers 3 m
- PORTER Infeed roller table + vertical rollers 4,2 m
- Second retractable middle profile support (Rh) (4 - 5 m)
- Second retractable middle profile support (Rh) (6 m)
- Third retractable intermediate profile support Kit (6 m)
- Retractable external profile support for machine with 4 - 5 m working cut (floor fixing outside machine)
- Minimum quantity lubrication (MQL) with pure oil and with oil flow setting and impulse frequency
- Profile raising roller
- Digital head tilting degree indicators
- Adjustable buffer for vertical vice on both heads
- Adjustable double buffer for vertical vice, it's compulsory on both heads
- Label printer
- Paper roll for printer; min. n. 10 pcs (58x35 mm)
- Data conversion driver. For supported formats, see list in attachment.
- Perimeter fences and gate unit
- Centre machine chip conveyor
- Chips conveyor belt - 4 m
- Swarf conveyor belt - 5 m
- Chips conveyor belt - 6 m

## Optional: Packing

- Crate packing – 4 m
- Crate packing - 5 m
- Crate packing - 6 m



Working Cut	A (mm)	B (mm)	C (mm)	Kg
4 m	6300	1700	1800	1580
5 m	7300	1700	1800	1840
6 m	8300	1700	1800	2250