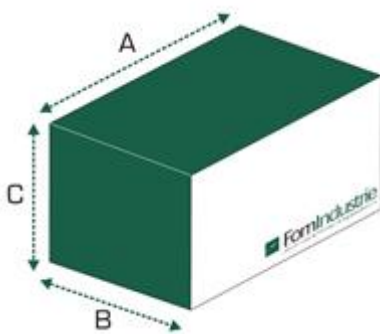


BAIHA L

Corner assembly machine (crimping machine)



CE



A (mm)	B (mm)	C (mm)	Kg
850	880	1500	420

Power supply	Total power installed	Air consumption for work cycle 42 NL/cycle	Working pressure 7 bar
--------------	-----------------------	---	---------------------------



Technical specifications:

- Internal crimping force multiplication cam system, capable of developing Thrust force of the crimping blades Kg. 5000 at 7 bars through pneumatic cylinder.
- Crimping positioning height from 0 to 180 mm
- Independent adjustment of the height of the two groups of blades. Position indicated by decimal display
- Possibility of crimping at two or three points
- Fold-away profile fence
- Simultaneous mechanical blades feed by means of a cog wheel system
- Blades stroke 16 mm
- Dimensions mm 880 x 850 x 1500 (h)
- Practical dashboard and swiveling

Dashboard



Working capacity

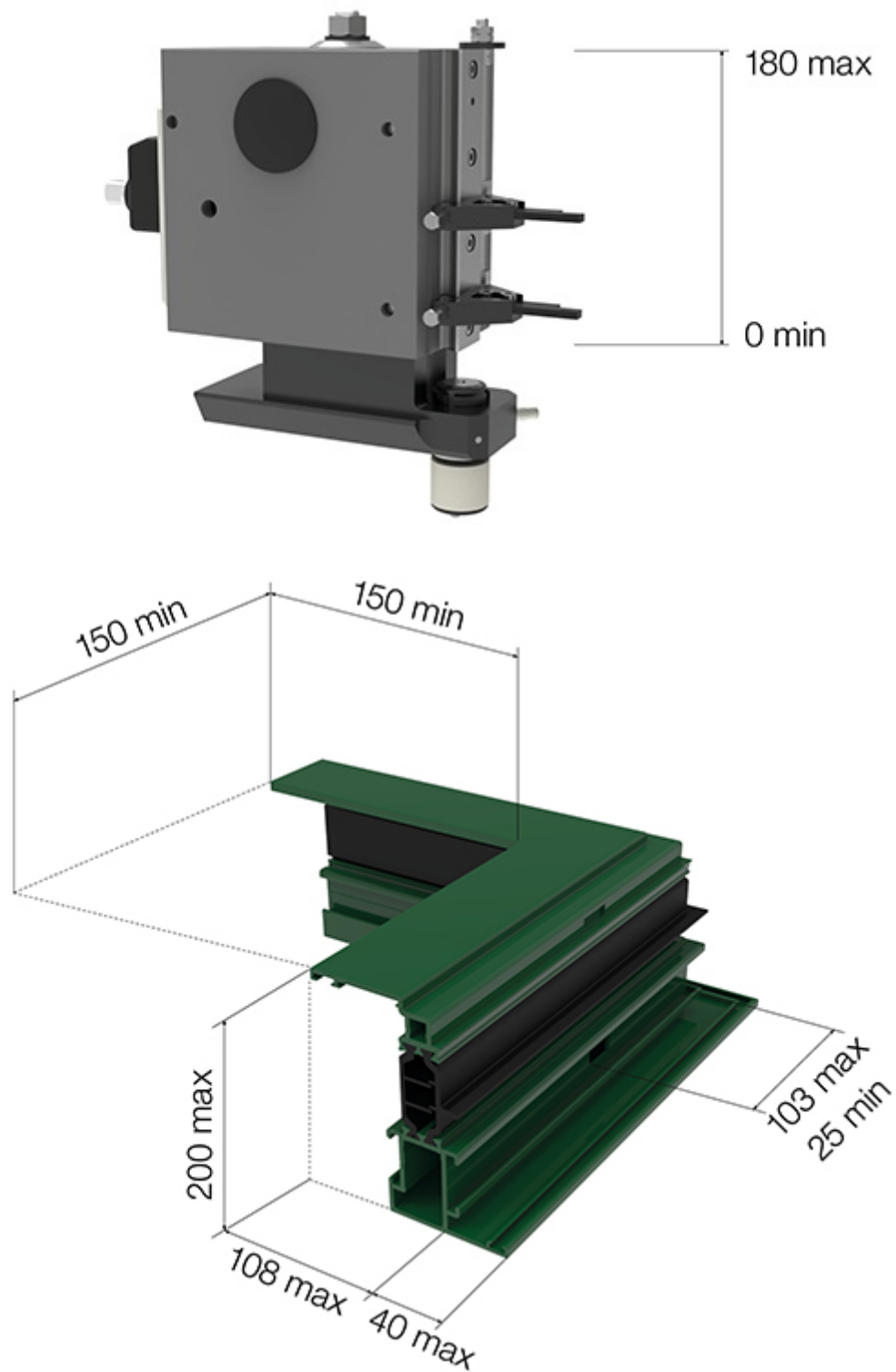


Diagram of the placement of standard tools at two points of crimping

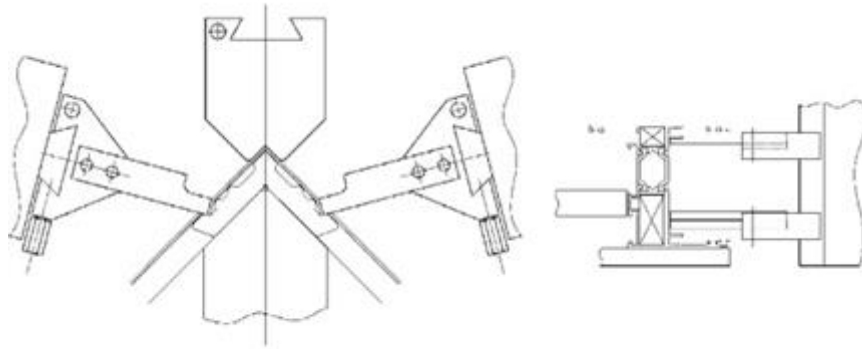
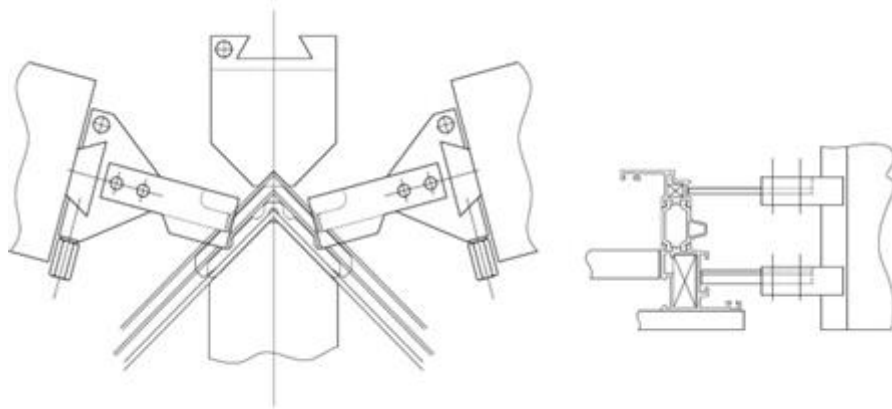


Diagram of the placement of special tools at two points of crimping

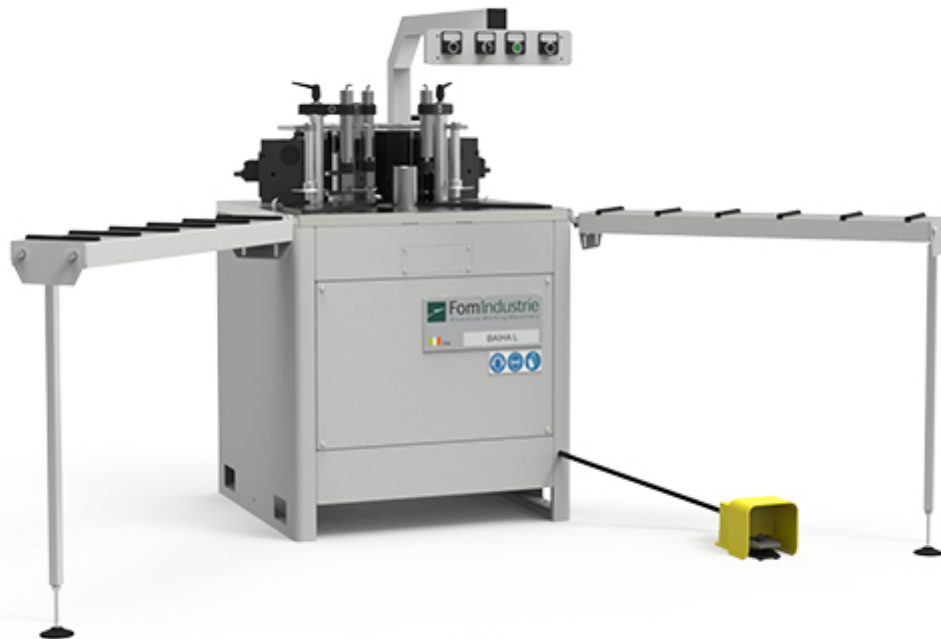


Standard accessories:

- No. 2 right tool-holder
- No. 2 left tool-holder
- N° 2 knives 2 mm thickness
- No. 4 tools 5 mm thickness
- N° 2 fold-away profile fences

Optionals:

- Additional right tool-holder
- Additional left tool-holder
- Additional tool 2 mm thickness
- Additional tool 5 mm thickness
- Swinging profile support
- Roller table kit
- Special tool

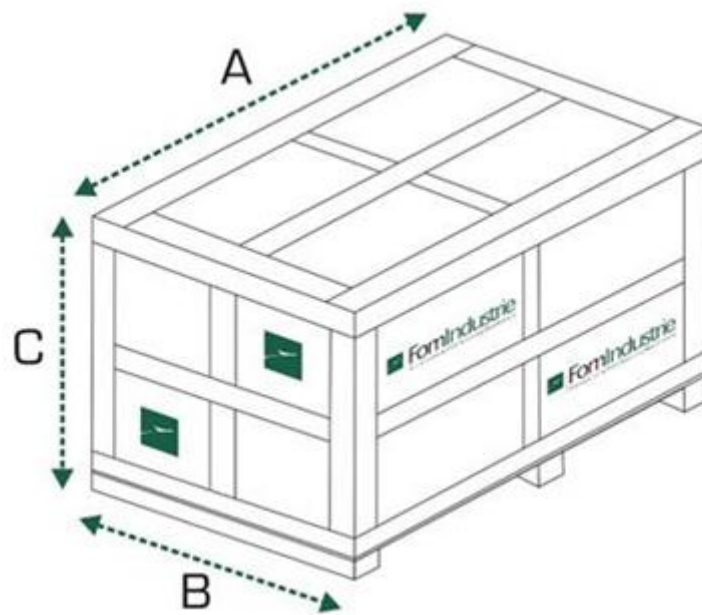
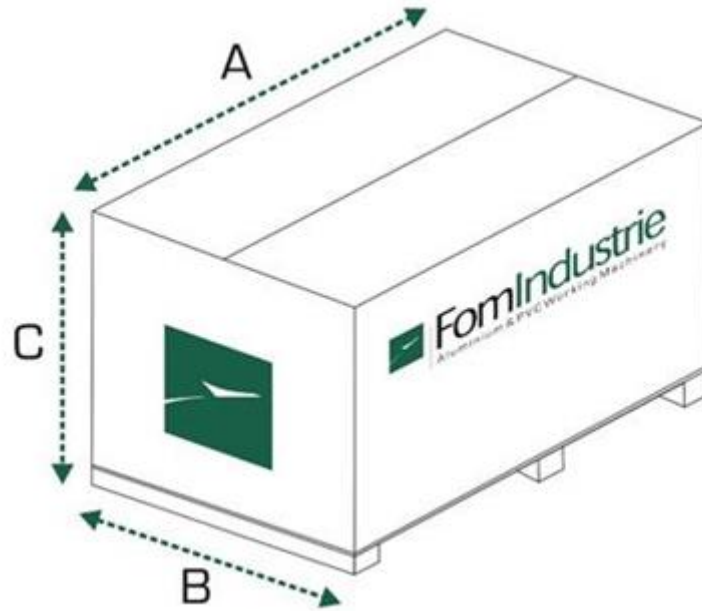


Machine with roller table kit (optional)

Optional: Packing

- Carton pallet packing with heat-shrink plastic bag

Crate packing



Carton packing				
A (mm)	B (mm)	C (mm)	Kg	
1155	1080	1780	432	
Crate packing				
A (mm)	B (mm)	C (mm)	Kg	
1095	1075	1650	491	