

Qualica-RD CAPELLA

The high quality waterproof Alien Gate (IP65)

CAPELLA is a **bidirectional turnstile** with selector, in case you want to parameterize unidirectionally, for high performance and high reliability access control. Silent and robust with a technology that guarantees an average of **10 million uses** without impact on the "**brushless**" mechanics.

3-year warranty. It has an arm of 850 or 900mm to allow the passage of **wheelchairs** and **pedestrians with luggage**. With automatic reset function (parameterizable) if the user is delayed more than 5 seconds, LED indicator of entry and closing and easy installation and maintenance.

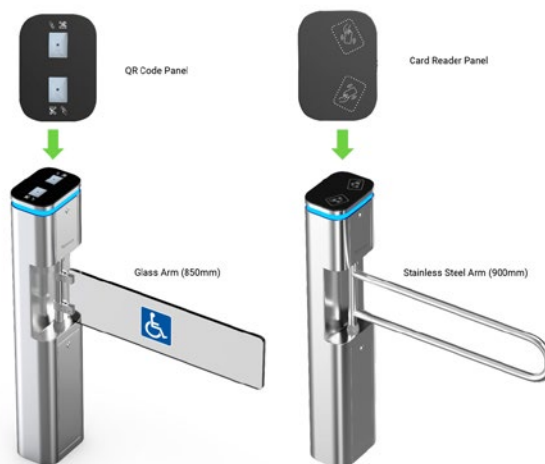
It is ideal for areas with pedestrian traffic: parks, schools, factories, libraries, cinemas, gyms, etc.



CAPELLA Turnstile

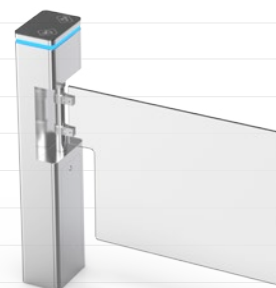
Features

- The top cover is made of black tempered glass.
- The 230 wide cabinet is flexible to install RFID card reader.
- 900 mm arm for wide passage, wheelchair, and pedestrians with large luggage can also pass.
- Decorative LED light bar, gives aesthetics and distinction.
- Automatic reset function: the turnstile arm will automatically lock within 5 sec. (can be adjusted) if passenger delay at the entrance.



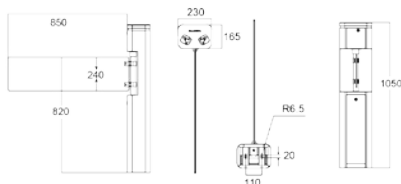
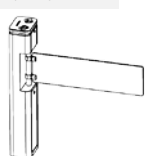
Technical specifications

Certification	Compliance CE, ROHS
Communication	Dry contact, Relay signal, RS485
Material	304 brushed stainless steel+ high-end black tempered glass
Arm material	304 Stainless Steel or Plexiglas-transparency
Dimension and Net Weight	230 * 165 * 1050mm / 25kg/pcs
Passage/arm Width	≤900mm/Stainless steel arm length: 900mm; Plexiglas-transparency arm length: 850mm
Passing Direction	Single directional and Bi-directional
MCBF	10 million
Power Supply	AC220V/110V, 50/60Hz
Operation Voltage / Power	24V DC / 20W
Operation Temperature	-20 °C - 75 °C
Operation Humidity	0 ~ 95% (No freeze)
Working Environment	Indoor / Outdoor Waterproof
Flow Rate	35~40 people per minute
LED Indicator	Unique blue LED strip
Emergency	Arms will open automatically
Flexibility	Integrate with any access control

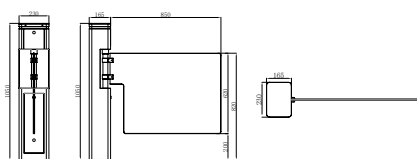
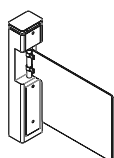


Dimensions (mm)

Transparent glass arm



Complete transparent glass arm



✓ Available in full glass.

