



3 years  warranty



Biometrics



RFID



Barcode



QR Code

Qualica-RD **CANOPUS**

The most technological and robust tripod on the market.

Qualica-RD CANOPUS is a tripod for access control with high performance and reliability. Its dimensions are reduced in order to adapt to spaces in the most optimal way.

It is one of the most silent and robust bi-directional turnstiles on the market, thanks to a technology that guarantees an average of **10 million uses** without impact on the **"brushless"** mechanics. **3-year warranty.**

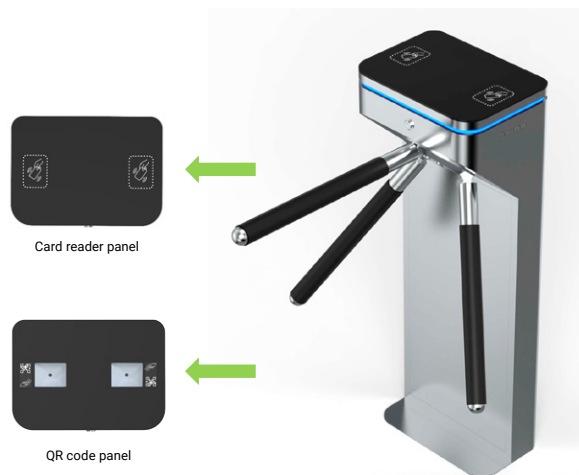
Ideal for hotels, gyms, buildings, shopping malls, supermarkets, reception areas, etc.



CANOPUS Tripod

Features

- Top cover is made of black tempered glass.
- Decorative LED light bar, gives a modern look.
- Automatic reset function: the turnstile arm will automatically lock within 5 sec (can be adjusted) if the passenger delay is given to the entrance.
- Multiple access controller boards, can be connected by TCP/IP through network cable.
- Control by central computer.
- Lathe circuit board is also with RS232 output, can be connected with mini PC.



Technical Specifications

Certification	Compliance CE, ROHS
Communication	Dry contact, Relay signal, RS485
Material	Polished 304 stainless steel + High-end black tempered glass
Arm material	304 Stainless Steel with rubber protector
Dimensions and net weight	360 * 260 * 980 mm / 35kg/pcs
Passage Width and direction	550mm (Arm length: 500mm) / Monodirectional and Bidirectional
MCBF	10 million
Power Supply	AC220V/110V, 50/60Hz
Operation Voltage	24V DC
Power Consumption	20W
Operation Temperature	-20 °C - 75 °C
Operation Humidity	0 ~ 95% (No freeze)
Working Environment	Indoor / Outdoor
Flow Rate	40 people per minute
LED Indicator	Unique blue LED strip (front+ top+side)
Emergency	Arms will drop down automatically
Flexibility	Integrate with any access control

Dimensions (mm)

