

COMPOSIZIONE: 37% LINO 63% COTONE
COMPOSITION: 37% FLAX 63% COTTON
COMPOSITION: 37% LIN 63% COTON
ZUSAMMENSTELLUNG: 37% LEIN 63% BAUMWOLLE
COMPOSICION: 37% LINO 63% ALGODON



Vale

Cat. 20

Vale

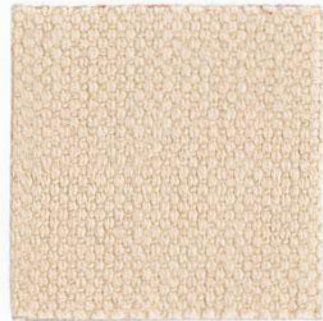
Cat. 20



24805



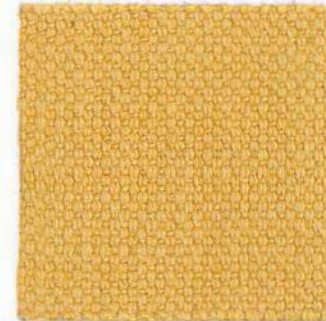
24802



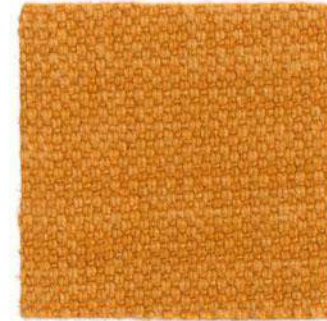
24801



24830



24813



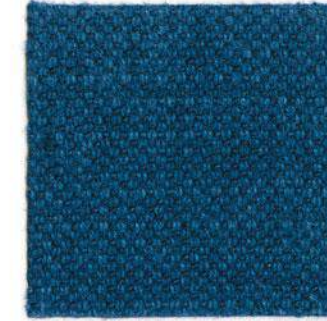
24817



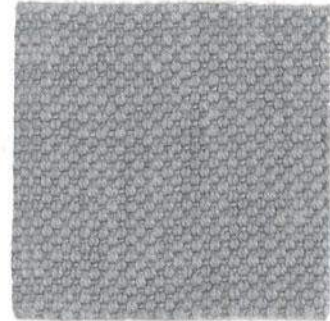
24834



24829



24856



24804



24810



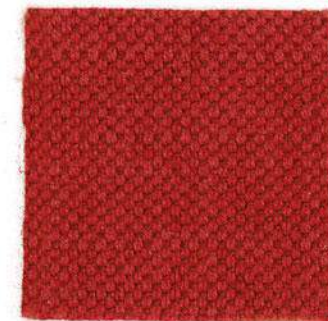
24837



24815



24842



24827



24820



24806



24803



24835



24818



24840



24848



24838



24844



24816

zanotta:

valente

cat. 20

COMPOSIZIONE: 53% COTONE 37% LANA 10% POLIAMMIDE

COMPOSITION: 53% COTTON 37% WOOL 10% POLYAMIDE

COMPOSITION: 53% COTON 37% LAINE 10% POLYAMIDE

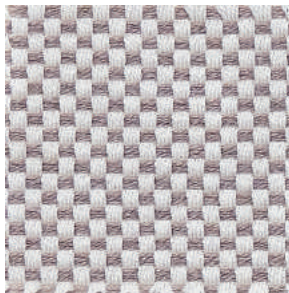
ZUSAMMENSTELLUNG: 53% BAUMWOLLE 37% WOLLE 10% POLYAMID

COMPOSICION: 53% ALGODON 37% LANA 10% POLIAMIDA

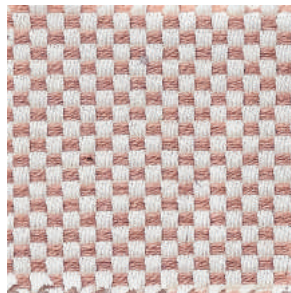


TEL. +39.0362 4981 FAX +39.0362 498900
WWW.ZANOTTA.IT

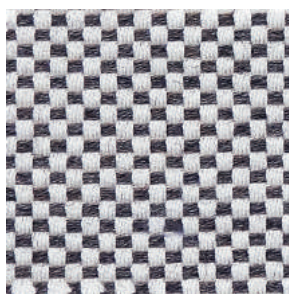
ZANOTTA SPA VIA VITTORIO VENETO 57
20834 NOVA MILANESE MB - ITALIA



27953



27907



27931



27936



27904



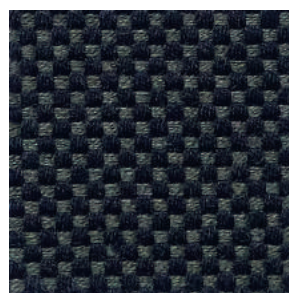
27914



27918



27940



27941



27959

COMPOSIZIONE: 61% VISCOSA 20% LINO 8% POLIESTERE 6% COTONE 3% ACRILICA 2% POLIAMMIDE

COMPOSITION: 61% VISCOSE 20% FLAX 8% POLYESTER 6% COTTON 3% ACRYLIC 2% POLYAMIDE

COMPOSITION: 61% VISCOSE 20% LIN 8% POLYESTER 6% COTON 3% ACRYLIQUE 2% POLYAMIDE

ZUSAMMENSTELLUNG: 61% VISKOSA 20% LEINEN 8% POLYESTER 6% BAUMWOLLE 3% ACRYL 2% POLYAMID

COMPOSICION: 61% VISCOSA 20% LINO 8% POLIÉSTER 6% ALGODON 3% ACRILICO 2% POLIAMIDA



TEL. +39.0362 4981 FAX +39.0362 498900
WWW.ZANOTTA.IT

ZANOTTA SPA VIA VITTORIO VENETO 57
20834 NOVA MILANESE MB - ITALIA



27801



27803



27840



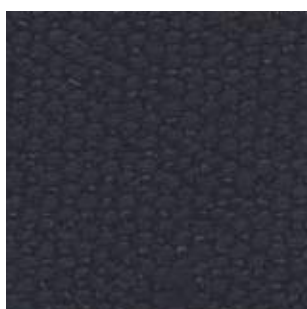
27853



27802



27824



27805



27804



27841



27826

COMPOSIZIONE: 39% VISCOSA 24% ACRILICA 19% COTONE 13% POLIESTERE 5% LINO

COMPOSITION: 39% VISCOSE 24% ACRYLIC 19% COTTON 13% POLYESTERE 5% FLAX

COMPOSITION: 39% VISCOSE 24% ACRYLIQUE 19% COTON 13% POLYESTER 5% LIN

ZUSAMMENSTELLUNG: 39% VISKOSE 24% AKRYL 19% BAUMWOLLE 13% POLYESTER 5% LEINEN

COMPOSICION: 39% VISCOSA 24% ACRILICO 19% ALGODON 13% POLIESTER 5% LINO



27702



27703



27756



27718



27740



27747



27704



27705



27706

COMPOSIZIONE: 81% PVC 19% POLIESTERE - RESISTENTE AL FUOCO
COMPOSITION: 81% PVC 19% POLYESTER - FLAME RETARDANT
COMPOSITION: 81% PVC 19% POLYESTER - FEU ENDURANCE
ZUSAMMENSTELLUNG: 81% PVC 19% POLYESTER - FEUERBESTÄNDIG
COMPOSICION: 81% PVC 19% POLIÉSTER - RESISTIENTE AL FUEGO



27505



27501



27506



27547



27557



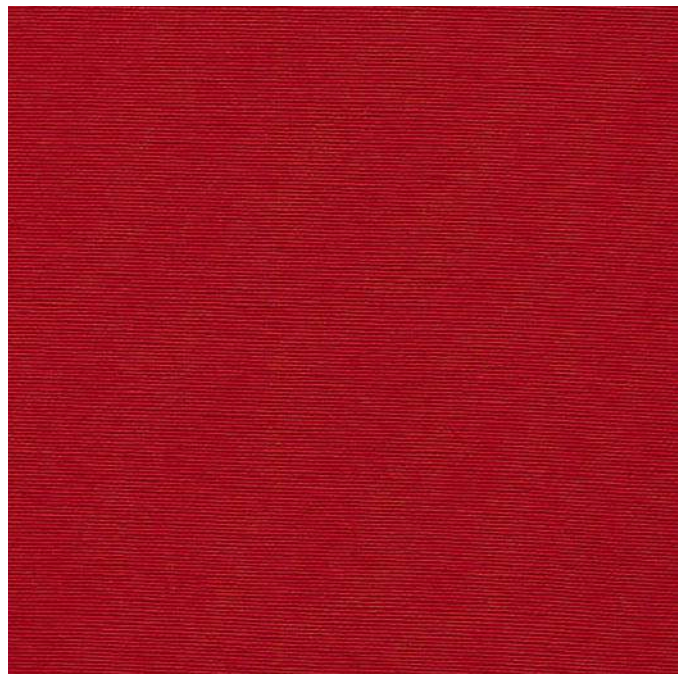
27514



27552



27517



27527

zanotta:

ecofire cat. 30

COMPOSIZIONE: 71% PVC 27% COTONE 2% POLIURETANO - RESISTENTE AL FUOCO

COMPOSITION: 71% PVC 27% COTTON 2% POLYURETHANE - FLAME RETARDANT

COMPOSITION: 71% PVC 27% COTON 2% POLYURÉTHANE - FEU ENDURANCE

ZUSAMMENSTELLUNG: 71% PVC 27% BAUMWOLLE 2% POLYHURETHAN - FEUERBESTÄNDIG

COMPOSICION: 71% PVC 27% ALGODÓN 2% POLIURETANO - RESISTIENTE AL FUEGO

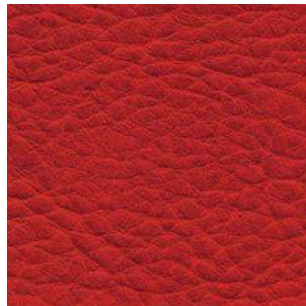


TEL. +39.0362.4981 FAX +39.0362.451038
WWW.ZANOTTA.IT

ZANOTTA SPA VIA VITTORIO VENETO 57
20834 NOVA MILANESE MB - ITALIA



31601



31627



31641



31603



31602



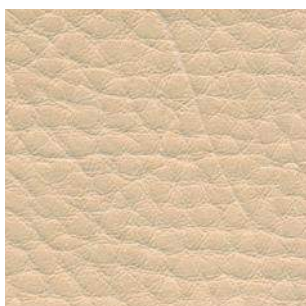
31629



31626



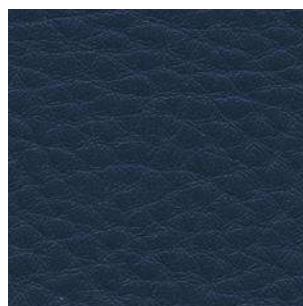
31605



31631



31616



31657



31606

COMPOSIZIONE: 100% POLIPROPILENE ADATTO PER USO ESTERNO
COMPOSITION: 100% POLYPROPYLEN SUITABLE FOR OUTDOOR USE
COMPOSITION: 100% POLYPROPYLEN INDIQUÉ POUR UN USAGE EXTÉRIEUR
ZUSAMMENSTELLUNG: 100% POLYPROPYLEN PASSEND FÜRS FREIE
COMPOSICION: 100% POLIPROPILENO INDICADO PARA USO EXTERIOR



26003



26093



26030



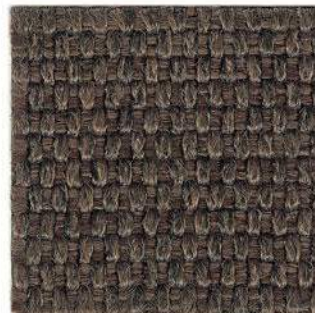
26090



26031



26091



26075



26098



26007



26097



26016



26096



26004



26094



26005



26095

COMPOSIZIONE: 72% LINO 14% COTONE 14% VISCOSA

COMPOSITION: 72% FLAX 14% COTTON 14% VISCOSE

COMPOSITION: 72% LIN 14% COTON 14% VISCOSÉ

ZUSAMMENSTELLUNG: 72% LEINEN 14% BAUMWOLLE 14% VISKOSE

COMPOSICION: 72% LINO 14% ALGODON 14% VISCOSA



27601



27617



27625



27642



27602



27654



27640



27644



27603



27614



27656



27627



27641



27616



27605



27606

zanotta:

COMPOSIZIONE: 75% VISCOSA 14% COTONE 11% LINO

COMPOSITION: 75% VISCOSE 14% COTTON 11% FLAX

COMPOSITION: 75% VISCOSE 14% COTON 11% LIN

ZUSAMMENSTELLUNG: 75% VISKOSE 14% BAUMWOLLE 11% LEINEN

COMPOSICION: 75% VISCOSA 14% ALGODÓN 11% LINO

tatto

cat. 30



TEL. +39.0362.4981 FAX +39.0362.451038
WWW.ZANOTTA.IT

ZANOTTA SPA VIA VITTORIO VENETO 57
20834 NOVA MILANESE MB - ITALIA



26821



26804



26831



26803



26818



26850



26847



26816

COMPOSIZIONE: 100% POLIESTERE - RESISTENTE AL FUOCO
COMPOSITION: 100% POLYESTER - FLAME RETARDANT
COMPOSITION: 100% POLYESTER - FEU ENDURANCE
ZUSAMMENSTELLUNG: 100% POLYESTER - FEUERBESTÄNDIG
COMPOSICION: 100% POLIÉSTER - RESISTIENTE AL FUEGO



26901



26927



26904



26917



26926



26929



26931



26943



26942



26944



26935



26908



26952



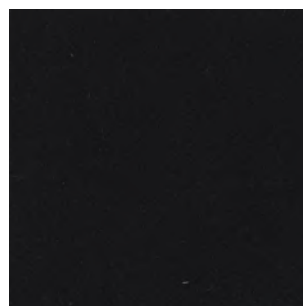
26940



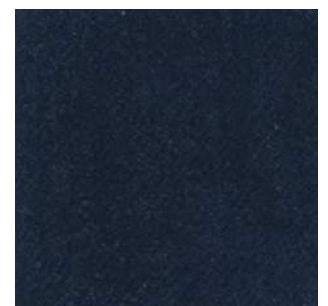
26936



26905



26906



26957

zanotta:

COMPOSIZIONE: 52% COTONE 15% VISCOSA 25% POLIESTERE 8% LINO

COMPOSITION: 52% COTTON 15% VISCOSE 25% POLYESTER 8% FLAX

COMPOSITION: 52% COTON 15% VISCOSE 25% POLYESTER 8% LIN

ZUSAMMENSTELLUNG: 52% BAUMWOLLE 15% VISKOSE 25% POLYESTER 8% LEINEN

COMPOSICION: 52% ALGODON 15% VISCOSA 25% POLIÉSTER 8% LINO

tegola

cat. 30



TEL. +39.0362.4981 FAX +39.0362.498900
WWW.ZANOTTA.IT

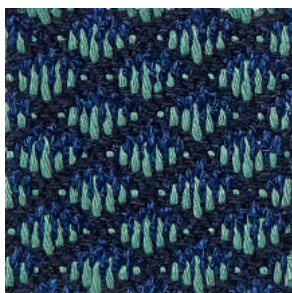
ZANOTTA SPA VIA VITTORIO VENETO 57
20834 NOVA MILANESE MB - ITALIA



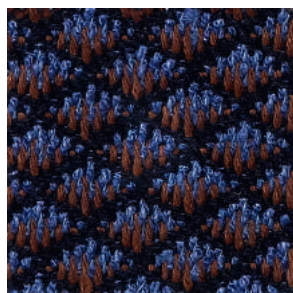
32353



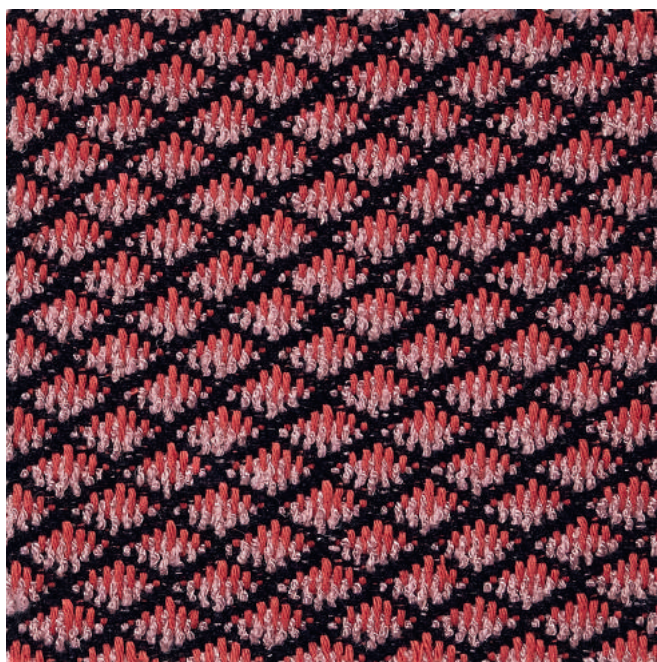
32315



32348



32359



32326

zanotta:

COMPOSIZIONE: **100% COTONE**
COMPOSITION: **100% COTTON**
COMPOSITION: **100% COTON**
ZUSAMMENSTELLUNG: **100% BAUMWOLLE**
COMPOSICION: **100% ALGODON**

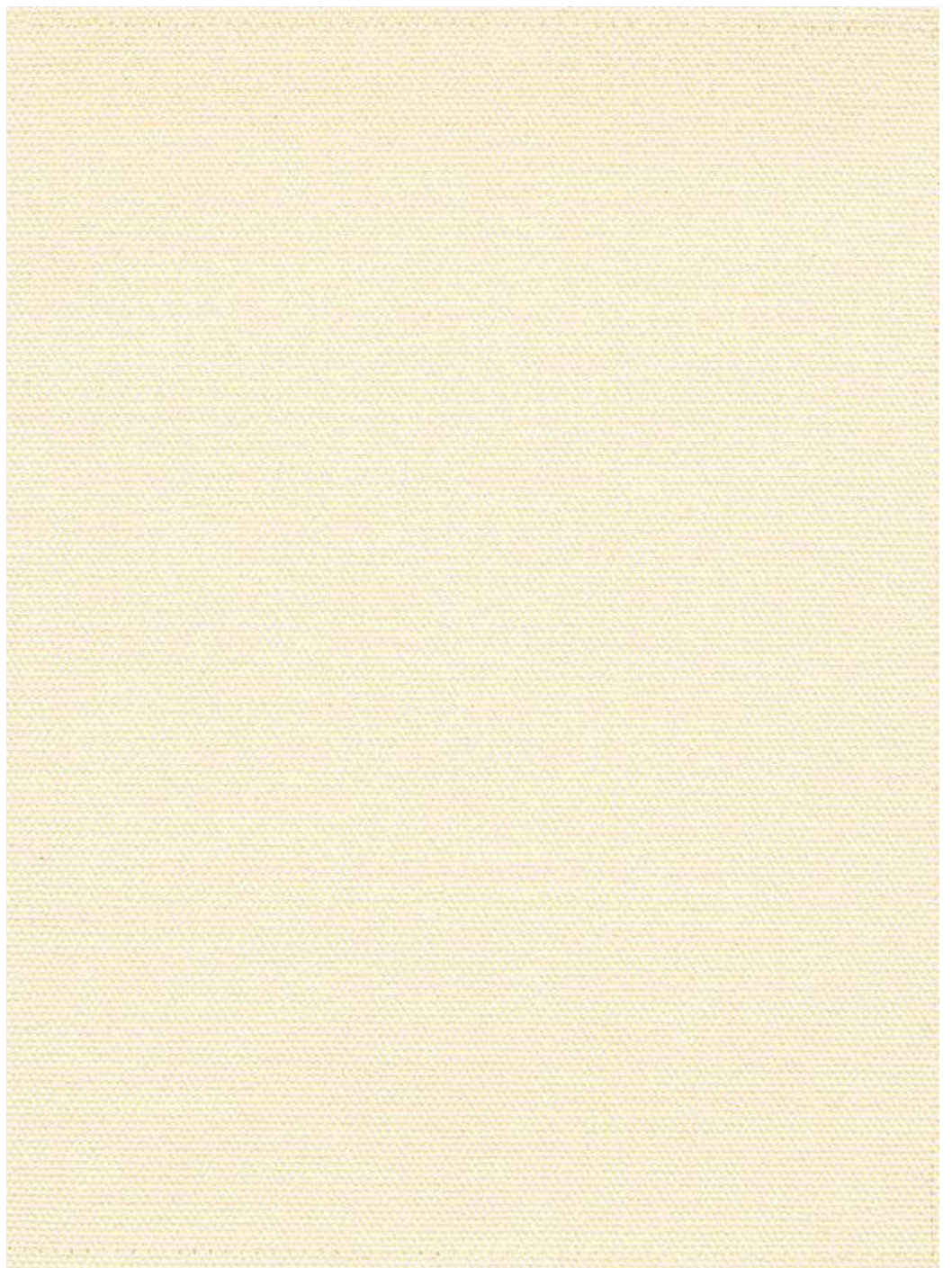
telastrong

cat. 30



TEL. +39.0362.4981 FAX +39.0362.498900
WWW.ZANOTTA.IT

ZANOTTA SPA VIA VITTORIO VENETO 57
20834 NOVA MILANESE MB - ITALIA



zanotta:

COMPOSIZIONE: 100% POLIESTERE RESISTENTE AL FUOCO
COMPOSITION: 100% POLYESTER FLAME RETARDANT
COMPOSITION: 100% POLYESTER FEU ENDURANCE
ZUSAMMENSTELLUNG: 100% POLYESTER FEUERBESTÄNDIG
COMPOSICION: 100% POLIÉSTER RESISTIENTE AL FUEGO

teolo

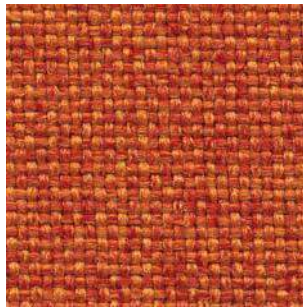
cat. 30



30602



30654



30617



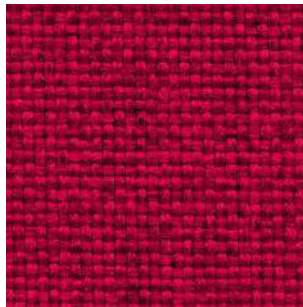
30614



30607



30655



30628



30629



30642



30604



30657



30658



30638



30605



30673



30606

TEL. +39.0362.4981 FAX +39.0362.498900
WWW.ZANOTTA.IT

ZANOTTA SPA VIA VITTORIO VENETO 57
20834 NOVA MILANESE MB - ITALIA

COMPOSIZIONE: 30% VISCOSA 19% LINO 14% COTONE 10% POLIESTERE 27% ACRILICO

COMPOSITION: 30% VISCOSE 19% FLAX 14% COTON 10% POLYESTER 27% ACRYLIC

COMPOSITION: 30% VISCOSE 19% LIN 14% COTON 10% POLYESTER 27% ACRYLIQUE

ZUSAMMENSTELLUNG: 30% VISKOSA 19% LEINEN 14% BAUMWOLLE 10% POLYESTER 27% ACRYL

COMPOSICION: 30% VISCOSA 19% LINO 14% ALGODON 10% POLIÉSTER 27% ACRILICO



31831



31803



31853



31804



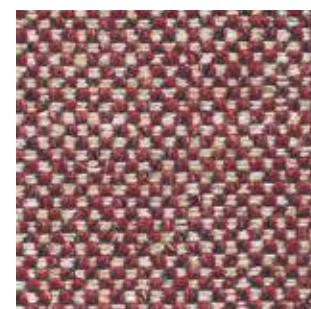
31825



31826



31827



31829



31819



31818



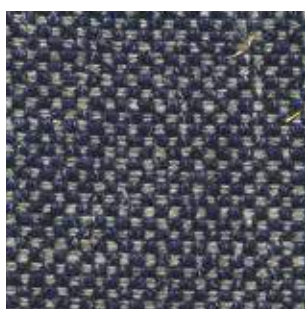
31841



31854



31852



31856



31816



31805

COMPOSIZIONE: 41% COTONE 36% ACRILICA 9% POLIESTERE 7% POLIAMMIDE 3% VISCOSA 2% LANA 2% LINO

COMPOSITION: 41% COTTON 36% ACRYLIC 9% POLYESTER 7% POLYAMIDE 3% VISCOSE 2% WOOL 2% FLAX

COMPOSITION: 41% COTON 36% ACRYLIQUE 9% POLYESTER 7% POLYAMIDE 3% VISCOSE 2% LAINE 2% LIN

ZUSAMMENSTELLUNG: 41% BAUMWOLLE 36% ACRYL 9% POLYESTER 7% POLYAMID 3% VISKOSE 2% WOLLE 2% LEINEN

COMPOSICION: 41% ALGODON 36% ACRILICO 9% POLIÉSTER 7% POLIAMIDA 3% VISCOSA 2% LANA 2% LINO



TEL. +39.0362.4981 FAX +39.0362.498900
WWW.ZANOTTA.IT

ZANOTTA SPA VIA VITTORIO VENETO 57
20834 NOVA MILANESE MB - ITALIA



32001



32030



32031



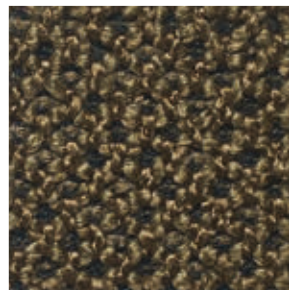
32004



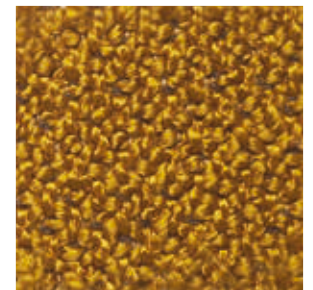
32003



32005



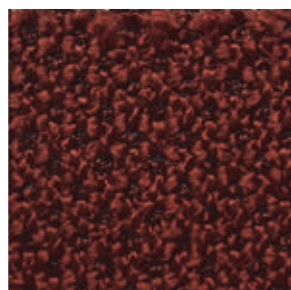
32041



32015



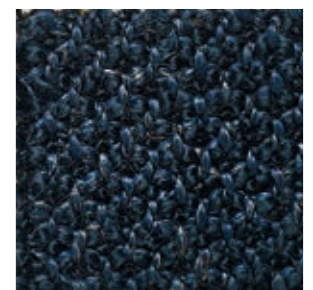
32017



32027



32059



32052

COMPOSIZIONE: 50% COTONE 33% VISCOSA 17% LINO
COMPOSITION: 50% COTTON 33% VISCOSE 17% FLAX
COMPOSITION: 50% COTON 33% VISCOSE 17% LIN
ZUSAMMENSTELLUNG: 50% BAUMWOLLE 33% VISKOSE 17% LEINEN
COMPOSICION: 50% ALGODON 33% VISCOSA 17% LINO

Toce



Cat. 30



26503



26593



26504



26530



26505



26557



26556



26551

COMPOSIZIONE: 100% COTONE
COMPOSITION: 100% COTTON
COMPOSITION: 100% COTON
ZUSAMMENSTELLUNG: 100% BAUMWOLLE
COMPOSICION: 100% ALGODON



31902



31914



31954



31903



31923



31925



31929



31927



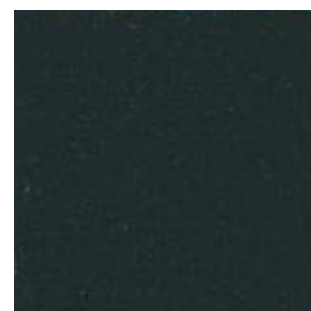
31937



31918



31946



31947



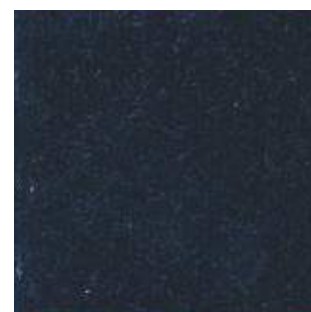
31952



31955



31956



31957



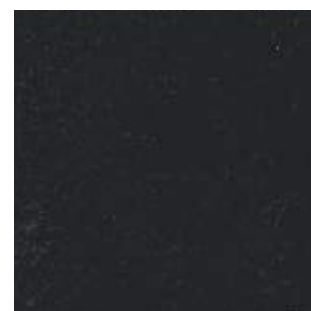
31904



31905



31920



31906

zanotta:

torre

cat. 30

COMPOSIZIONE: 56% COTONE 30% VISCOSA 14% LINO

COMPOSITION: 56% COTTON 30% VISCOSE 14% FLAX

COMPOSITION: 56% COTON 30% VISCOSE 14% LIN

ZUSAMMENSTELLUNG: 56% BAUMWOLLE 30% VISKOSE 14% LEINEN

COMPOSICION: 56% ALGODON 30% VISCOSA 14% LINO



TEL. +39.0362.4981 FAX +39.0362.498900
WWW.ZANOTTA.IT

ZANOTTA SPA VIA VITTORIO VENETO 57
20834 NOVA MILANESE MB - ITALIA



32101



32107



32131



32132



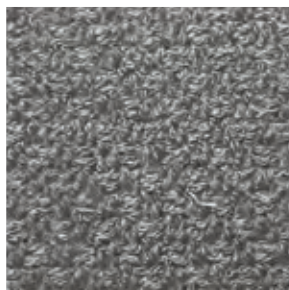
32113



32130



32142



32104



32105



32156

zanotta:

COMPOSIZIONE: 83% VISCOSA 17% POLIESTERE
COMPOSITION: 83% VISCOSE 17% POLYESTER
COMPOSITION: 83% VISCOSE 17% POLYESTER
ZUSAMMENSTELLUNG: 83% VISKOSE 17% POLYESTER
COMPOSICION: 83% VISCOSA 17% POLIÉSTER

tulip

cat. 30



TEL. +39.0362.4981 FAX +39.0362.498900
WWW.ZANOTTA.IT

ZANOTTA SPA VIA VITTORIO VENETO 57
20834 NOVA MILANESE MB - ITALIA



65901



65902



65903



65904

zanotta:

quadrifoglio

cat. 40

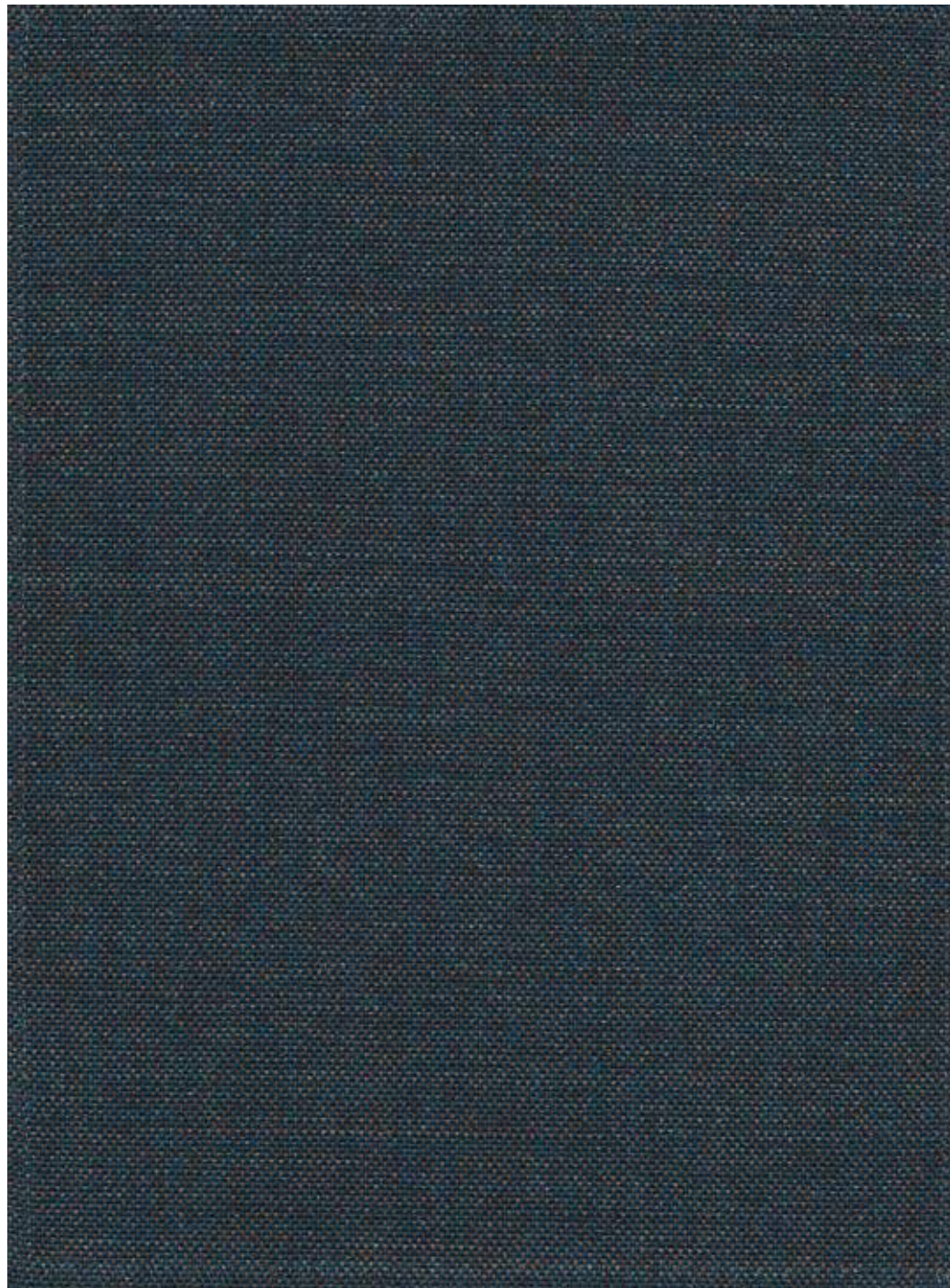
COMPOSIZIONE: 90% LANA 10% NYLON - RESISTENTE AL FUOCO

COMPOSITION: 90% WOOL 10% NYLON - FLAME RETARDANT

COMPOSITION: 90% LAINE 10% NYLON - FEU ENDURANCE

ZUSAMMENSTELLUNG: 90% WOLLE 10% NYLON - FEUERBESTÄNDIG

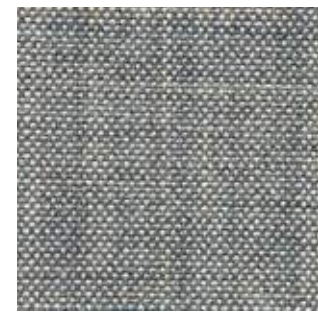
COMPOSICION: 90% LANA 10% NYLON - RESISTIENTE AL FUEGO



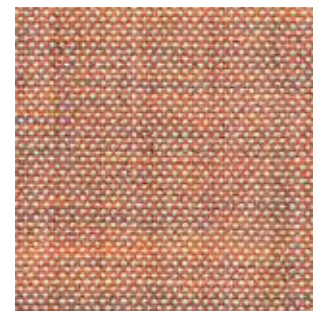
27057



27021



27004



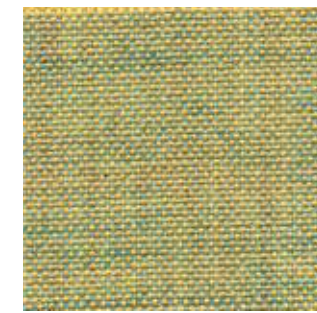
27023



27027



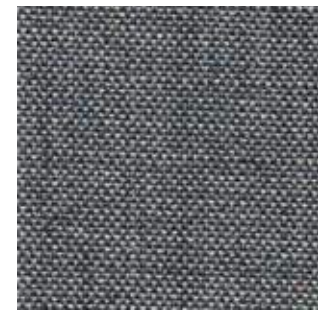
27017



27015



27030



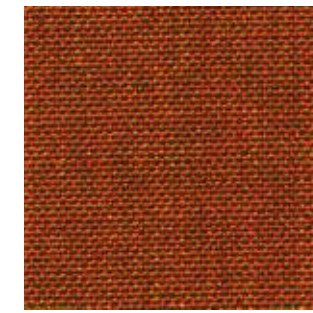
27008



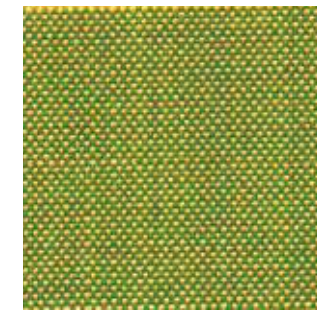
27052



27028



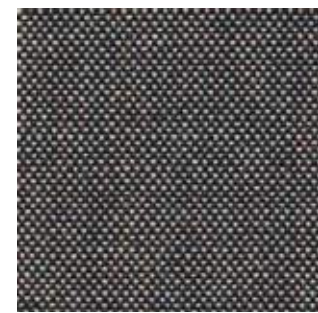
27026



27047



27014



27005



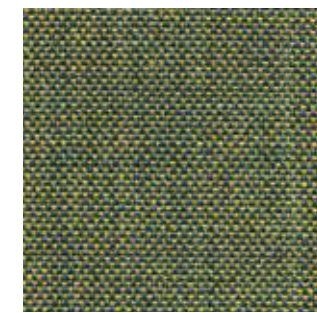
27050



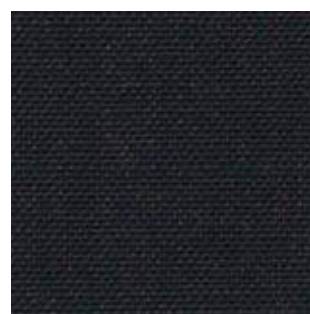
27029



27013



27042



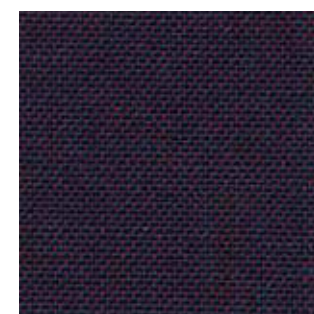
27038



27007



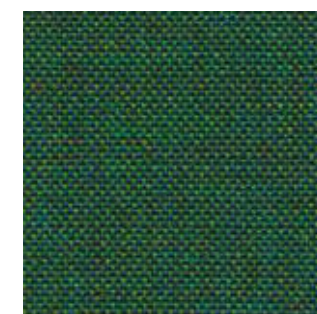
27006



27025



27049



27048

COMPOSIZIONE: 95% LANA 5% POLIAMMIDE RESISTENTE AL FUOCO

COMPOSITION: 95% WOOL 5% POLYAMIDE FLAME RETARDANT

COMPOSITION: 95% LAINE 5% POLYAMIDE FEU ENDURANCE

ZUSAMMENSTELLUNG: 95% WOLLE 5% POLYAMID FEUERBESTÄNDIG

COMPOSICION: 95% LANA 5% POLIAMIDA RESISTENTE AL FUEGO



TEL. +39.0362.4981 FAX +39.0362.498900
WWW.ZANOTTA.IT

ZANOTTA SPA VIA VITTORIO VENETO 57
20834 NOVA MILANESE MB - ITALIA



32228



32203



32254



32215



32218



32247



32216



32205



32256



32257

zanotta:

ped de poule

cat. 50

COMPOSIZIONE: 60% COTONE 25% VISCOSA 15% LINO

COMPOSITION: 60% COTTON 25% VISCOSE 15% FLAX

COMPOSITION: 60% COTON 25% VISCOSE 15% LIN

ZUSAMMENSTELLUNG: 60% BAUMWOLLE 25% VISKOSE 15% LEINEN

COMPOSICION: 60% ALGODÓN 25% VISCOSA 15% LINO



TEL. +39.0362.4981 FAX +39.0362.451038
WWW.ZANOTTA.IT

ZANOTTA SPA VIA VITTORIO VENETO 57
20834 NOVA MILANESE MB - ITALIA



64830



64851



64825



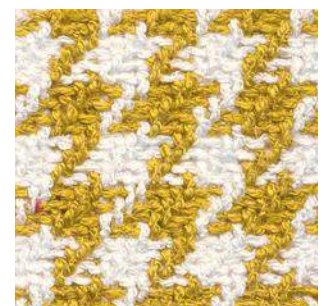
64804



64856



64829



64814

zanotta:

ecofire cat. 30

COMPOSIZIONE: 71% PVC 27% COTONE 2% POLIURETANO - RESISTENTE AL FUOCO

COMPOSITION: 71% PVC 27% COTTON 2% POLYURETHANE - FLAME RETARDANT

COMPOSITION: 71% PVC 27% COTON 2% POLYURÉTHANE - FEU ENDURANCE

ZUSAMMENSTELLUNG: 71% PVC 27% BAUMWOLLE 2% POLYHURETHAN - FEUERBESTÄNDIG

COMPOSICION: 71% PVC 27% ALGODÓN 2% POLIURETANO - RESISTIENTE AL FUEGO



TEL. +39.0362.4981 FAX +39.0362.451038
WWW.ZANOTTA.IT

ZANOTTA SPA VIA VITTORIO VENETO 57
20834 NOVA MILANESE MB - ITALIA



31601



31627



31641



31603



31602



31629



31626



31605



31631



31616



31657



31606