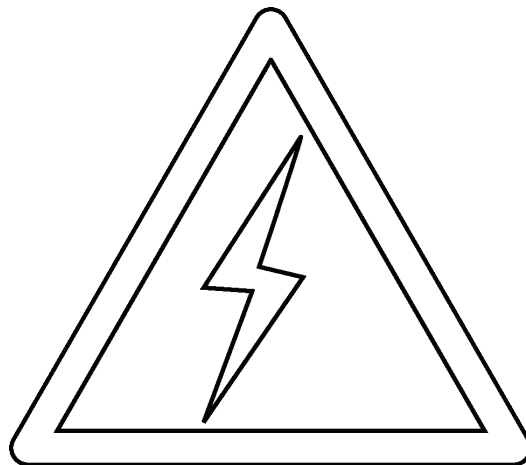
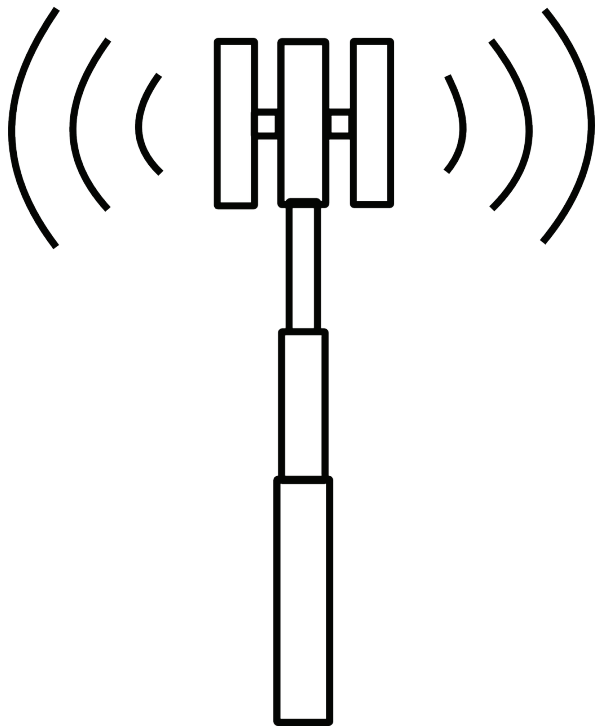
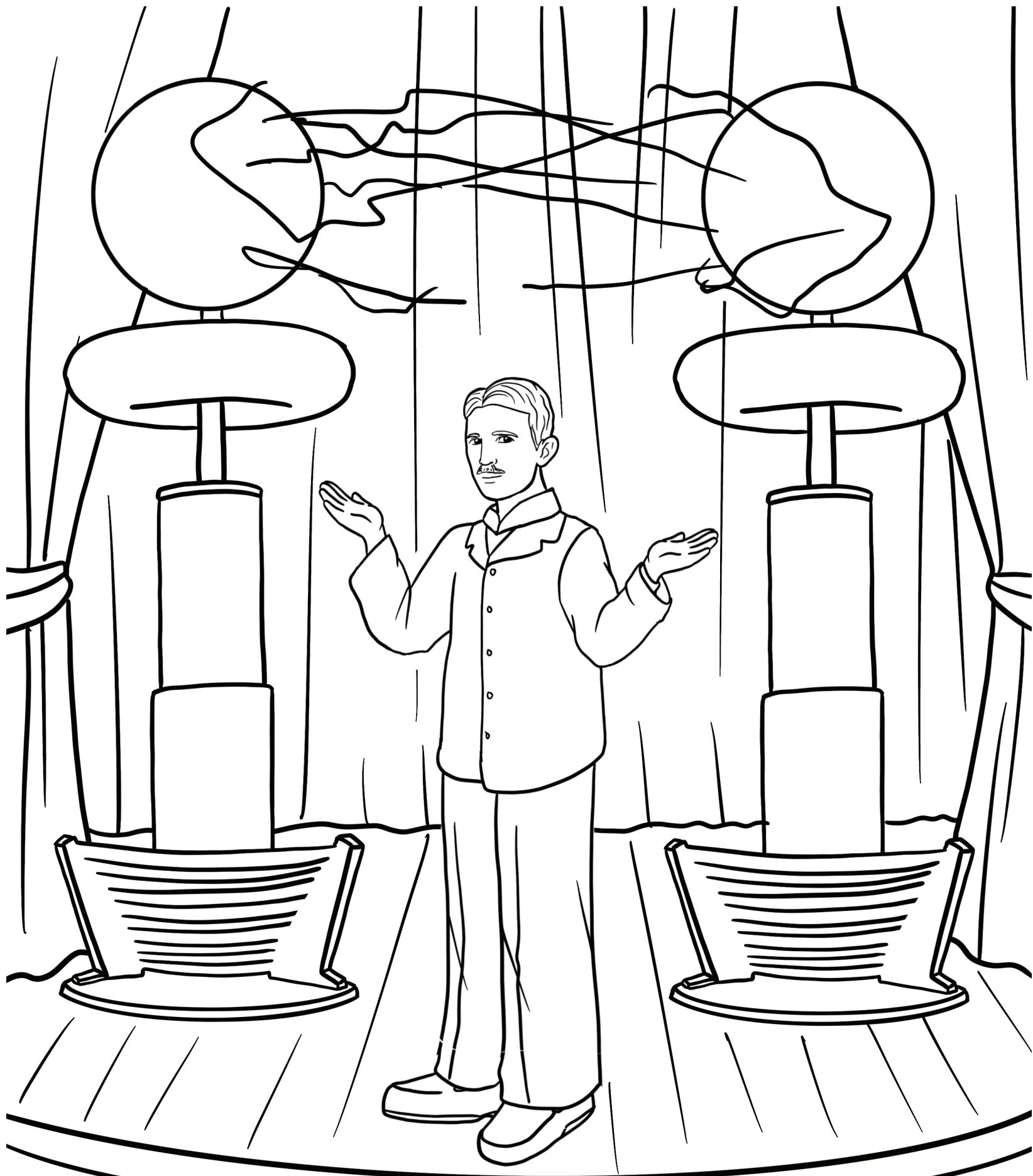


# Nikola Tesla

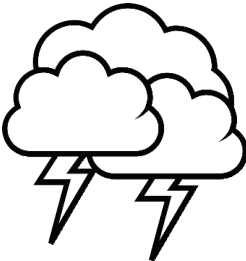
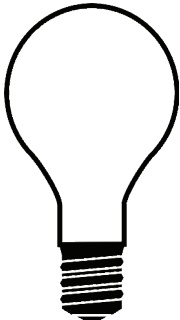
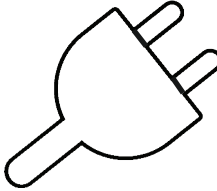
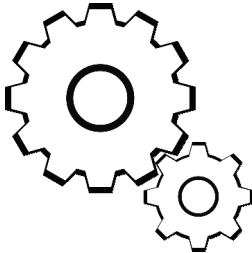
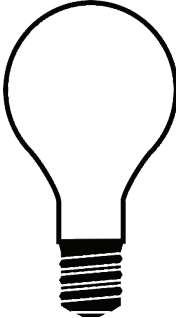
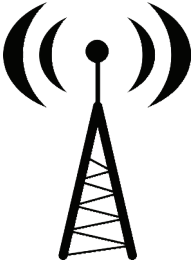
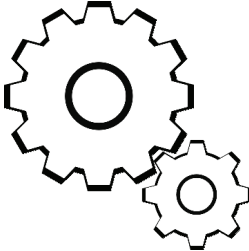
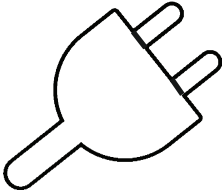
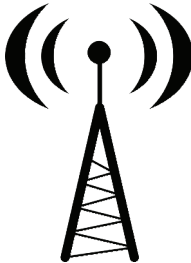
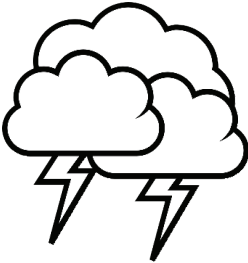
Nikola Tesla was born in 1856 in Croatia. He is a famous inventor, engineer, and scientist. An engineer is somebody that designs machines and systems. He is most famous for developing a type of electricity called alternating current (AC). This is the type of electricity that is used in homes all around the world. In addition to inventing the AC electrical system, he was also one of the first to work with x-rays and radio waves. One of his dreams was to create electricity that didn't need wires. Although he was able to do so in one experiment, it never became popular.





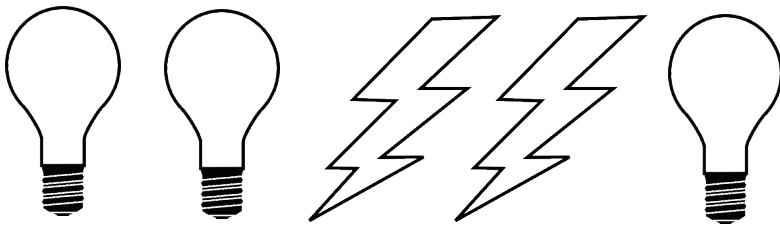
Nikola Tesla

Draw lines to connect the pictures that **match**.



Draw what comes next.

A A B C C A A B



X Y X Z X X Y X

