



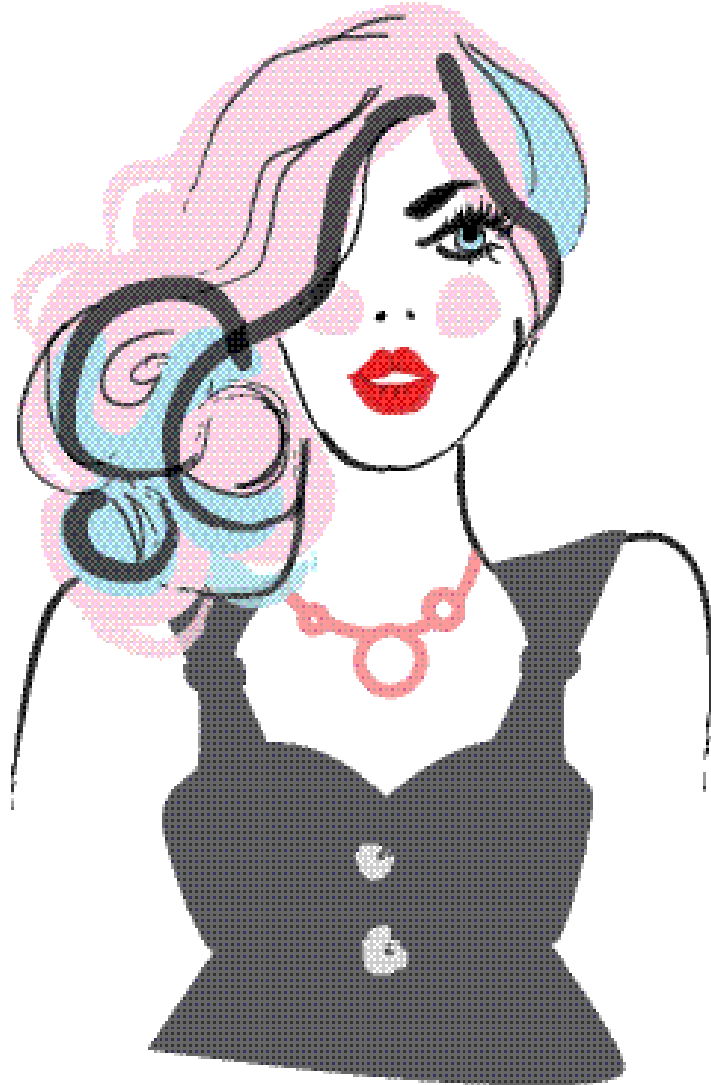
# HOW TO MATCH YOUR JEWELS *to your wardrobe*

---

We love jewellery and know how easily it can take an outfit from zero to one hundred! So take a peep inside, and learn all the insider tips on how best to wear your jewels to make you look and feel as fabulous as you truly are!

*Disclaimer: This guide is just a little bit of fun so please feel free to wear your jewels however makes you feel amazing!*

**RUBY OLIVE**  
JEWELLERY + ACCESSORIES



**Neckline:** Sweetheart

**Jewels:** Short to medium necklace

---

A little bit sweet, a little bit flirty - the sweetheart neckline has plunging scalloped edges that resemble the top of a heart. The neckline suits Short to Medium length necklaces, depending on the depth of the plunge and the size of the bust. You want the necklace touching the skin only, not the top of the shirt.



**Neckline:** Scoop

**Jewels:** Medium to long necklace

---

Ah the modest scoop neckline. You can go for gold on Medium to Long length necklaces, making sure the feature of the necklace doesn't cross over the top of the shirt. Adjustable necklaces work a treat with this neckline, allowing you to make longer or shorter depending on the size of the bust.

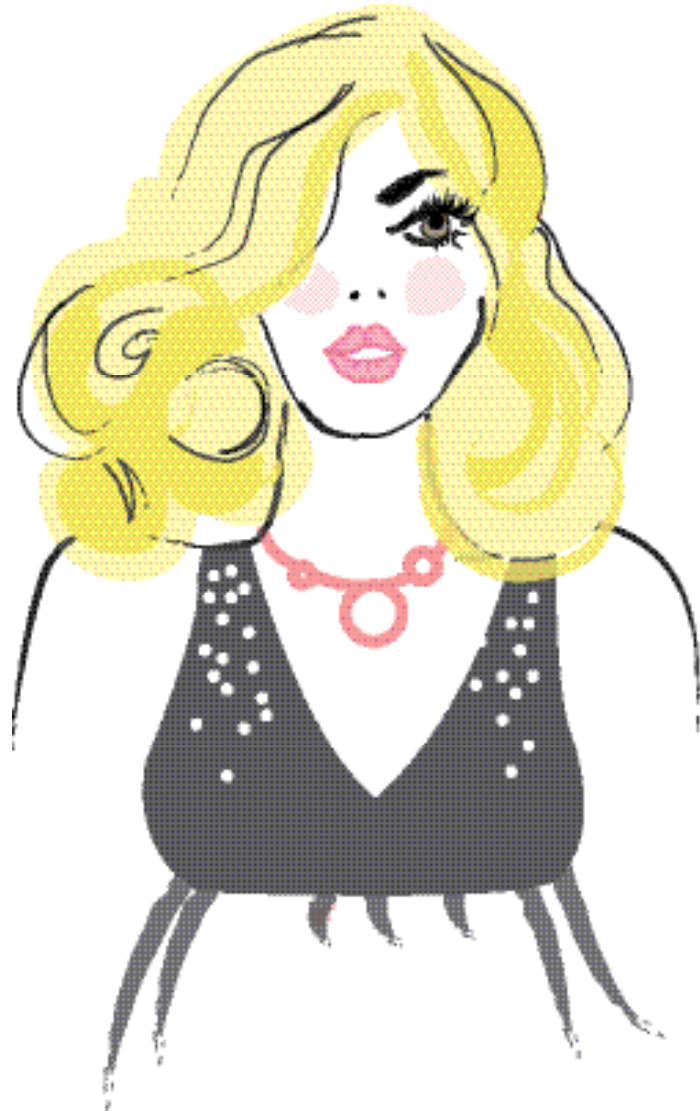


**Neckline:** High

**Jewels:** Statement Earrings

---

A high neckline is always appropriate, for work, for cocktails, anytime! It cuts high on the neck and often leaves the shoulders exposed. Wear with a pair of Statement earrings or a Medium to Long necklace. If there is detail on the neckline it's best to go with just a necklace, you don't want too much going on in the one area!



**Neckline:** V-neck

**Jewels:** Short to medium necklace

---

A low neckline that reveals a little cleavage (or a lot if you're game)! Best worn with Short to Medium necklaces, making sure the bottom of the necklace isn't touching the top. You don't want your statement piece getting hidden by the fabric or trapped between the girls!



**Neckline:** Square

**Jewels:** Short to medium necklace

---

Three sides to a square that hang down off the shoulders and cut across the chest horizontally. Wear the square neckline with Short to Medium necklaces, making sure to get a good balance between the size of the square and the necklace, if the square is wide across you'll do best with a bigger necklace, if it's smaller then a simpler piece will do!



**Neckline:** Turtle

**Jewels:** Statement Earrings

---

A Winter staple, the turtleneck has a fold of fabric that rolls down, but still sits high around the neck. Wear with a pair of Statement earrings, making sure they aren't bumping into the top of the neck. Or go for a Medium to Long necklace, simple styles look elegant with this neckline.



**Neckline:** Crew

**Jewels:** Medium to Long Necklace

---

The humble crew neck, you'll find it on most t-shirts and it's one of the easiest to wear. Medium to Long necklaces look fab on this neckline, and don't be afraid to make a statement - this classic neckline just begs for one!





**Neckline:** Boat

**Jewels:** Medium to Long Necklace

---

Oui oui! This classic Parisian neckline is an elegant statement in itself, it widens past the collarbones to hang on the shoulders! Wear with Medium to Long length necklaces, with pendant styles usually suiting best!

THE MOST  
IMPORTANT  
RULE OF ALL?

---

*Have fun!*

WWW.RUBYOLIVE.COM

**RUBY OLIVE**

JEWELLERY + ACCESSORIES