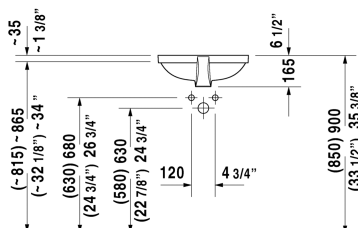
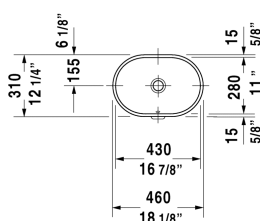


Bathroom_Foster Vanity basin # 0336430000

| < 16 7/8" Inch > |



Vanity basin	Dimension	Weight	Order number
undermount basin, with overflow, without faucet deck, hardware included, cUPC® listed*, 16 7/8" Inch			
Colors			
00 White			
Variant			
	16 7/8" x 11" Inch	15 lb	0336430000
Infobox			
* Complies with following standards: ASME A112.19.2/CSA B45.1, Measurements of undercounter models represent interior measurements			
Sanitary ceramics with the special WonderGliss surface finish will remain clean and attractive-looking for a long time to come. When ordering WonderGliss please add a "1" as eleventh digit to the model number.			
Hardware for stone countertops, (with the exception of # 046651)		0.4 lb	005028

All drawings contain the necessary measurements which are subject to standard tolerances. They are stated in inch & mm and are non-binding. Exact measurements, in particular for customized installation scenarios, can only be taken from the finished ceramic piece.