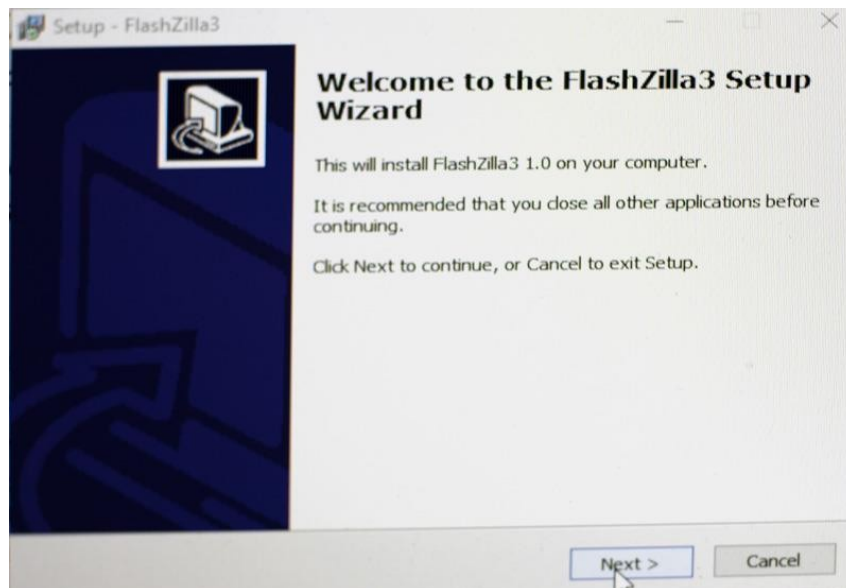


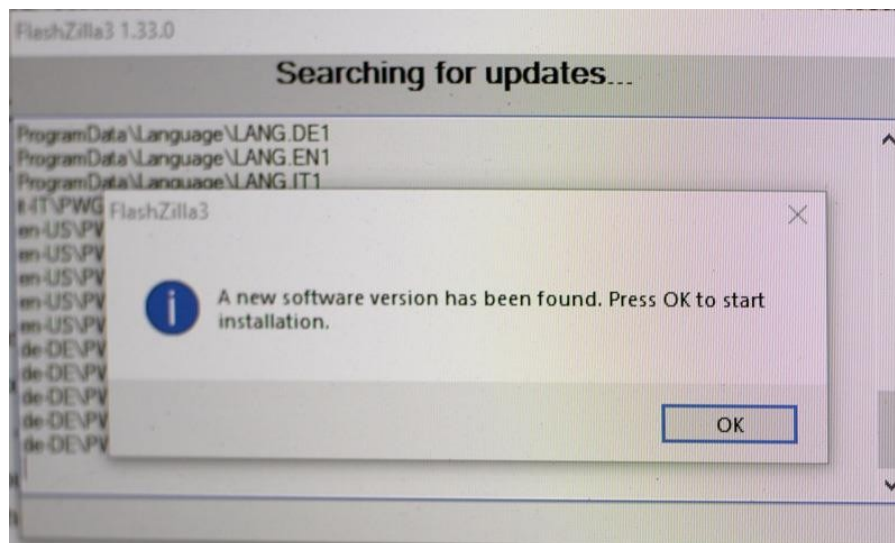
UPDATED FLASHZILLA GUIDE

With the aim to better serve our customers, we have updated the instructions for the Flashzilla V3 device. If you run into any issues, please contact info@rawtekinc.com with pictures and description of the difficulty.

- 1) Download the device software to your PC by clicking [HERE](#)



- 2) Plug in device to your computer using the USB Cable, open the program, and let the device connect and automatically update.



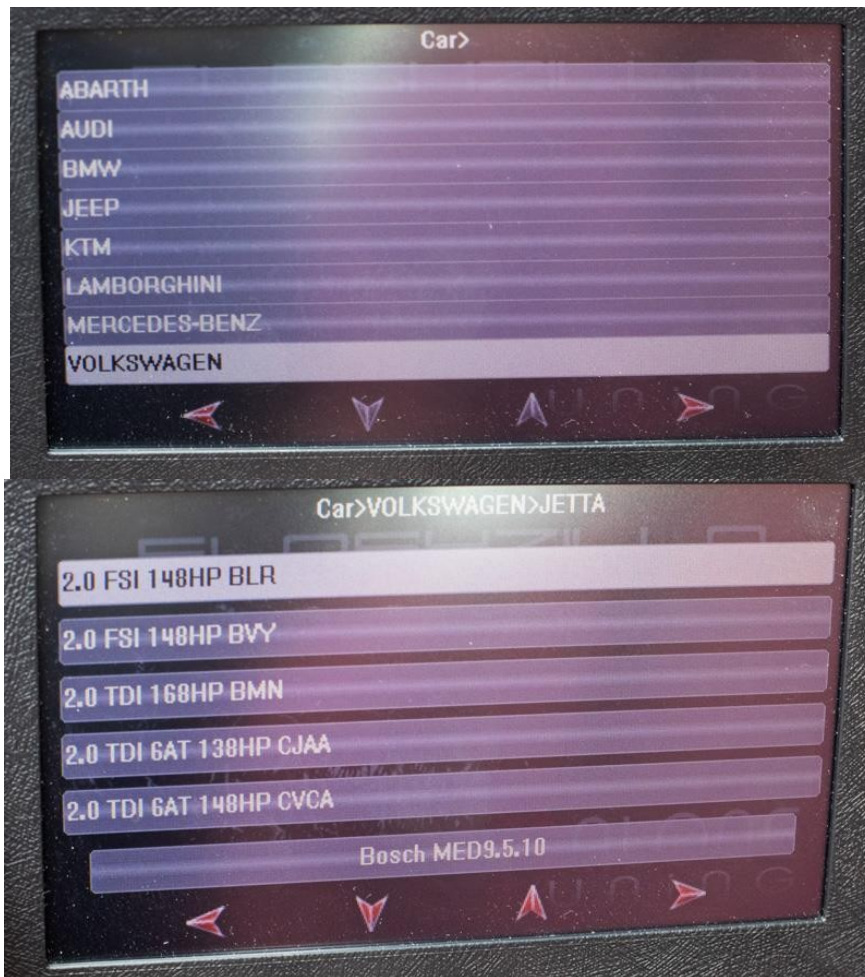


3) Once device has updated, unplug from computer and connect it to your car via the OBD II port.

4) Turn the key to the ON position (do not start the car) and tap the "Tuning" icon on the Flashzilla screen



5) Select vehicle manufacturer, then the model, then the engine size.



Here is a quick guide to what you should be looking for:

- 2000-2003 Jetta, Golf, or Beetle 1.9L TDI, then choose engine code **ALH** under VW Jetta, Golf or Beetle.
- 2004-2006 Jetta, Golf, or Beetle 1.9L TDI, then choose engine code **BEW** under VW Jetta, Golf or Beetle.
- 2004-2004 Passat 2.0L TDI, then choose engine code **BHW** under VW Passat. You may also try BEW engine code under Jetta, Golf, or Beetle.
- 2009-2014 Jetta, Golf, Beetle, or A3 TDI, then choose engine code **CJAA** under VW Jetta.
- 2012-2014 Passat TDI, then choose engine code **CKRA** (under Passat VII). You may need to download the full template file linked above.

-
-
- 2015+ Jetta, Golf, Passat, or A3 TDI, then choose engine code **CUUB** under VW Jetta, or CRLB.
 - any 2011+ **3.0L** TDI (VW, Audi, and Porsche Cayenne), then choose engine code **CRCA** under VW Touareg, or **CNRB**.

=====
=====

If you don't see your vehicle (ECU) listed, then you can download updated template files below. [Click here](#) for installation instructions.

- **DO NOT CHANGE YOUR TEMPLATE TO THE WRONG SCREEN, all newer devices will be 4.3"**, please contact us if you're unsure.
 - For larger 4.3" screen FlashZilla v3+:
 - [Base template containing popular cars, but not all of them \(faster loading\).](#)
 - [Full template containing virtually all cars.](#)

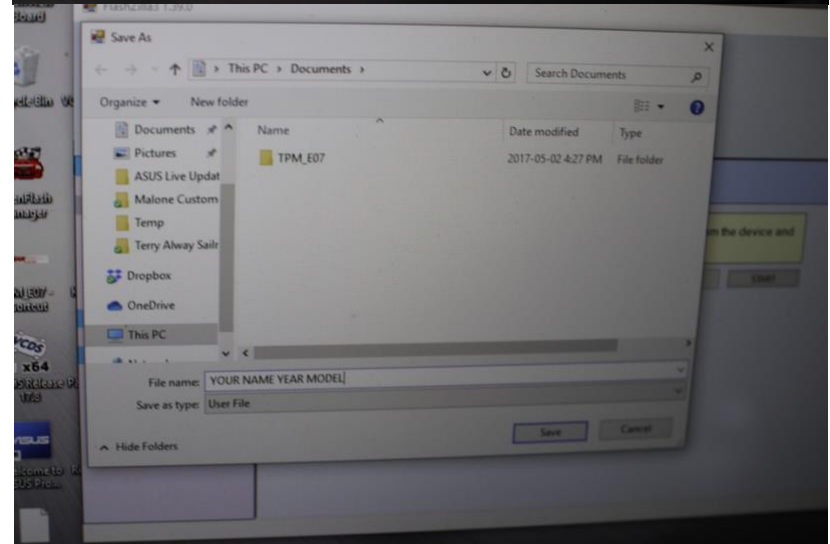
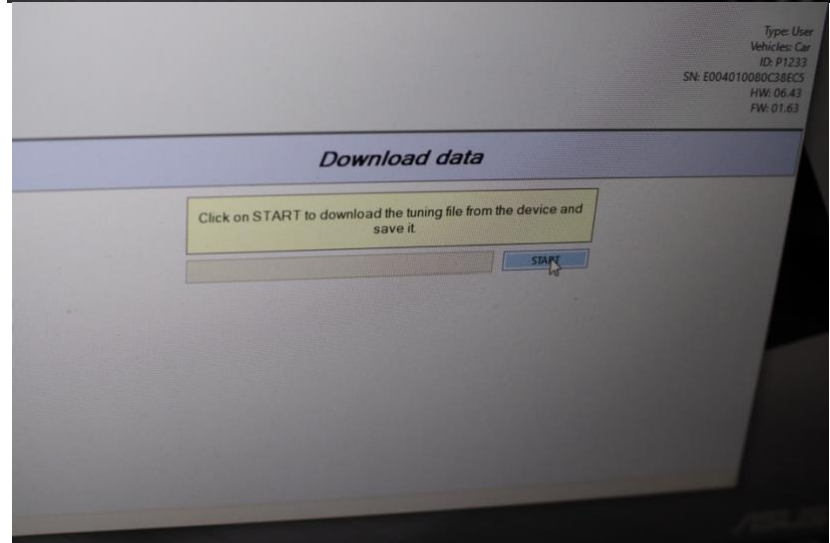
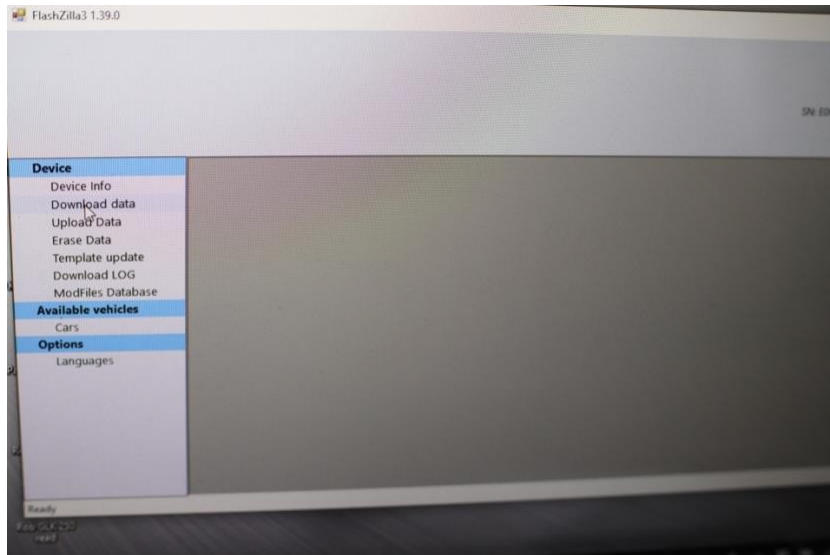
6) Once you have chosen the correct engine you will be prompted to read the stock (original) file. Follow the prompts for switching the key to the on and off positions.





7) Once stock file has been read, disconnect device from vehicle and connect it back to the computer. With the program open, click "Download data". It will prompt you to save the file. Save file under order name and year/model of car.

For Example : John Doe 2012 Jetta

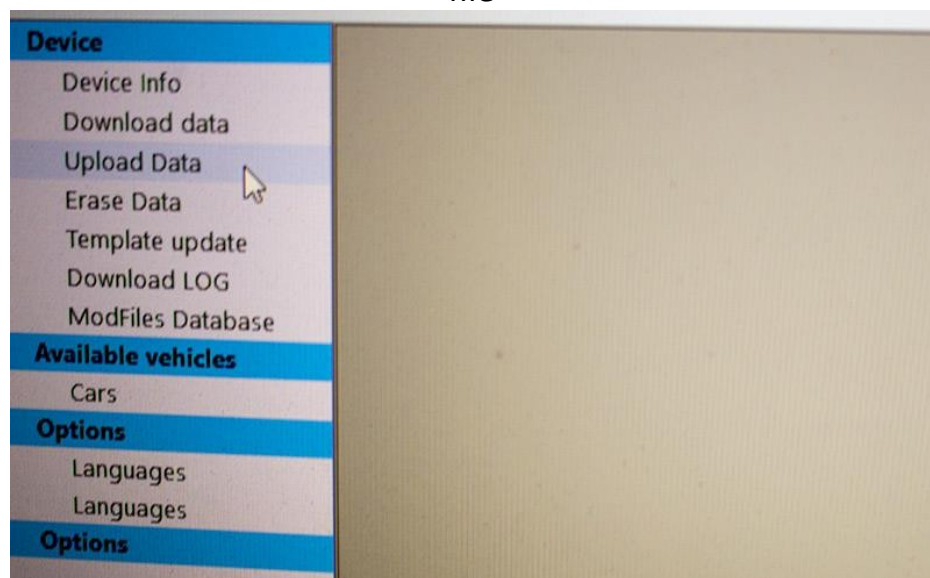


8) After saving the file, send an email to: TUNING@RAWTEKINC.COM and

make sure to attach the .usr file that you just saved
PLEASE INCLUDE THE WEB ORDER NUMBER ASSOCIATED WITH THE TUNE.

Once the tune is received, it will take roughly 24hr for you to get the new file back. Weekends do not count

9) After getting your new Malone tune sent back to you, save the new file and then, with your Flashzilla connected, click "upload data" and select the new file



10)After loading tune, connect Flashzilla to car and tap on the tuningicon and follow the same steps as you did for reading the stock tune.

ALL DONE!!

Special Notes:

If you see "**Calibration file not found**" message on FlashZilla's screen while trying to read the vehicle's ECU, then you will also see numbers that look like this: **03L906019HH_8180**. It simply means that a stock file matching your ECU is not in our online database yet. Please let us know via e-mail the full calibration number that you saw on screen. If we have the stock file that matches this number, then we will upload it to the online database (this may take up to 24 hours during business days) and inform you. Then you will need to connect the device to your computer and start the FlashZilla software again. It will automatically update online. You can try reading your car again.

A battery charger or jump cable (connected to another car that's running) is recommended to stabilize your car's power during the ECU write operation. **THIS IS REQUIRED for 2010-2014 Golf, Jetta, and Beetle.** Pulling the radiator fan fuse is an alternative, but using a charger is still recommended.

Please contact us if you need assistance.