

MOUNTING & LENGTH CHARTS—LOAD ADJUSTING SHOCKS

PART NO.	MOUNTING		LENGTHS			SPRING	PARTS PACK	PART NO.	MOUNTING		LENGTHS			SPRING	PARTS PACK
	Upper	Lower	Comp.	Ext.	Trav.				Upper	Lower	Comp.	Ext.	Trav.		
SENSA-TRAC® LOAD ADJUSTING SHOCK ABSORBERS								SENSA-TRAC® LOAD ADJUSTING SHOCK ABSORBERS —							
58241	L1/CP3	LS36	9.750	14.375†	4.625	45#	P19	Continued							
58253	S4	LS38	10.500	16.125†	5.625	40#	P1135	58595	LS39	LS39	13.000	20.875	7.875	60#	P185
58263	S4	XP4	9.125	13.750†	4.625	45#	P1134	58598	LS74	LS74	14.625	22.125†	7.500	V/R	None
58270	S4	XP4	8.750	13.000†	4.250	45#	P1134	58600	XP7	LS47	16.125	26.750†	10.625	60#	None
58273	S4	XP4	8.750	13.000†	4.250	45#	P1134	58601	L1	LS26	14.250	23.000	8.750	60#	None
58275	S4	LS38	9.250	14.000†	4.750	45#	P1135	58602	L1	LS26	13.375	21.750	8.375	60#	None
58411	XP7	L1/CP3	12.500	20.000†	7.500	28#	P576	58604	L1	LS26	15.750	26.375	10.625	60#	None
58417	L1	S4	11.375	18.125	6.750	28#	P1137	58605	S4	LS26	12.375	19.750†	7.375	60#	P1135
58427	S4	LS7	14.250†	21.500	7.250	25#	P1278	58606	XP7	LS47	14.000	22.375†	8.375	60#	None
58428	S4	L1/CP3	12.625	20.375†	7.750	28#	P576 & P1136	58608	L1	LS26	14.250	23.000	8.750	V/R	P827
58484	L2	L2	14.125	23.125	9.000	60#	None	58609	XP7	LS47	15.375	25.250†	9.875	60#	None
58486	L1	L1	11.125	18.000	6.875	V/R	P101	58610	LS47	LS47	15.250	24.625	9.375	60#	None
58496	L2	L2	13.000	21.250	8.250	V/R	P76	58612	XP7	LS47	14.625	23.750†	9.125	60#	None
58497	L1	L1	14.000	23.375	9.375	V/R	P829	58613	XP8	LS39	14.625	22.375	7.750	37#	None
58510	S4	L1/CP3	12.750	21.375	8.625	V/R	P577 & P591	58614	XP8	LS39	15.625	25.125	9.500	37#	None
58518	S4	LS38	12.125	19.625	7.500	60#	P1134	58615	LS47	LS47	15.250	24.625	9.375	60#	None
58523	XP7	LS47	14.500	22.750†	8.250	V/R	None	58616	LS28	LS26	11.875	18.125†	6.250	V/R	None
58527	LS37	LS37	11.625	19.000	7.375	60#	None	58617	XP7	LS26	15.500	25.125†	9.625	37#	P941
58539	S4	S4	10.625	17.875	7.250	V/R	Two P1134	58618	L1	LS26	15.750	26.125	10.375	37#	P827
58540	XP7	LS14	12.875	21.500	8.625	V/R	P436	58619	L1	LS25	13.500	21.500†	8.000	V/R	P827
58551	XP7	S4	12.125	20.375	8.250	V/R	P1137	58620	LS28	LS28	11.250	17.000†	5.750	45#	None
58552	LS41	LS37	11.125	18.000	6.875	V/R	None	58624	LS27	LS26	10.625	15.750†	5.125	45#	None
58559	S4	LS38	13.625	22.750	9.125	60#	P1135	58625	S4	LS26	13.375	22.125	8.750	60#	P1135
58567	L1	L1	12.500	20.375	7.875	60#	P573	58627	L1	L1	14.250	22.500†	8.250	V/R	None
58568	S4	L1/CP3	12.375	19.875†	7.500	V/R	P576 & P1136	58628	S4	LS26	14.250	23.875	9.625	60#	P1135
58571	LS39	L2	15.500	25.000†	9.500	60#	None	58629	S5	LS26	16.000	26.375†	10.375	37#	P1167
58574	XP7	L1/CP3	13.375	21.250†	7.875	V/R	P576 & P941	58630	LS28	LS28	14.500	22.750†	8.250	37#	None
58575	LS37	LS37	9.375	14.500	5.125	60#	None	58632	LS26	LS26	13.625	21.625†	8.000	60#	None
58577	LS39	L2	13.750	22.500	8.750	V/R	None	58633	LS26	LS26	14.250	23.000†	8.750	60#	None
58578	L1/CP5	LS47	14.000	22.875	8.875	60#	P19	58636	LS47	LS47	15.500	23.875†	8.375	60#	None
58579	S4	S4	11.500	19.250	7.750	V/R	Two P1137	58637	LS47	LS47	16.875	25.750†	8.875	60#	None
58587	LS39	S4	11.375	18.125†	6.750	V/R	P1134	58638	LSA7	LS47	16.000	25.875	9.875	60#	None
58591	L1	LS26	14.875	24.750	9.875	60#	None	58639	LS47	LS47	15.000	23.625	8.625	60#	None
58592	L1	LS38	12.625	21.000	8.375	60#	P570	58640	LS47	LS47	15.750	26.500	10.750	60#	None
58594	XP12	L1	12.750	20.000†	7.250	V/R	None								

† Bumper Stop Unit. Dimension shown at Bumper Contact.
‡ Hydraulic Lockout Unit. Dimension shown at Lockout Contact.

PASSENGER CARS/
LIGHT TRUCKS

MAX-LIFT™
SUPPORT

RECREATIONAL
VEHICLES

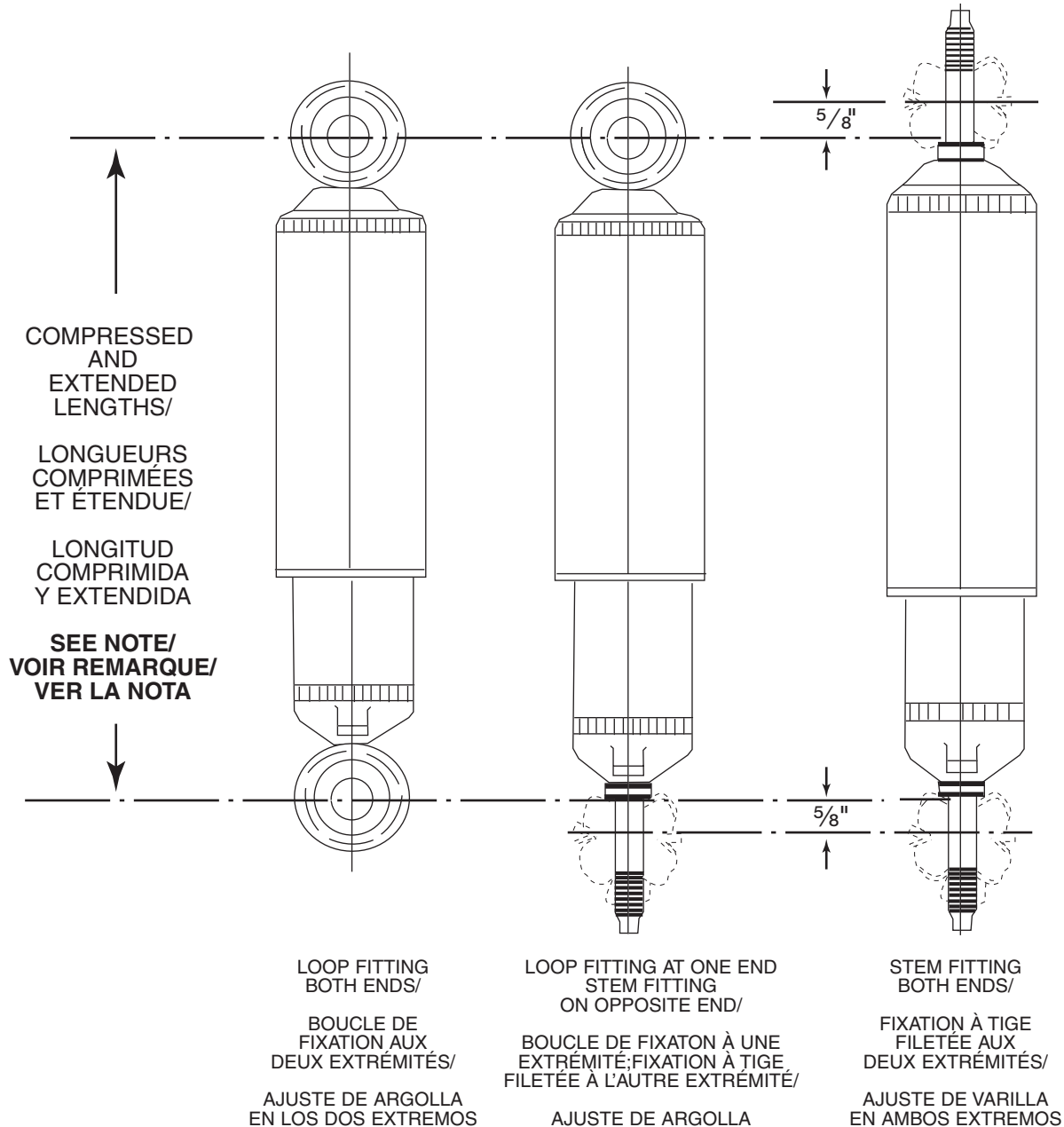
RANCHO RS5000
SHOCKS

TRAILER
RETROFIT KITS

NUMERICAL
LISTING

MOUNTING &
LENGTH

SHOCK ABSORBER LENGTH DIMENSIONING LONGUEUR DES AMORTISSEURS LONGITUD DE LOS AMORTIGUADORES



Special Construction - Construction not the same as standard shock mounts listed.

NOTE: Compressed and extended lengths listed in the following pages of this book are taken from the center of loops and/or from the stem shoulders.

When measuring from the brackets on a vehicle, subtract 5/8" for each stem end.

See illustrations above.

Fabrication spéciale - La fabrication des fixations est différente de celle des amortisseurs standard.

REMARQUE: Les longueurs en compression et en extension indiquées dans les pages suivantes sont mesurées entre les épaulements des tiges filetées et/ou le centre des boucles. Lors de la mesure à partir des ferrures, soustraire 5/8" pour chaque tige filetée. Voir les illustrations.

Fabricación especial - La fabricación es diferente a la de las series de los amortiguadores listadas.

NOTA: Las longitudes comprimida y extendida listadas en las páginas siguientes de este libro, son tomadas desde el centro de las argollas y/o desde los resaltes de la varilla.

Cuando se mide desde los ajustes, en un vehículo quite 5/8" por cada extremo de varilla.

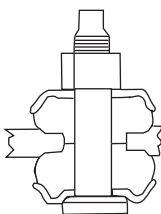
Ver ilustración arriba.

CONVERSION CHART/ TABLEAU DE CONVERSION/ TABLA DE CONVERSIÓN

Fraction/ Fractionnaire Fracción (Inches/pouces/pulgadas)	Decimal/ Décimale Decimal
1/8	.12
1/4	.25
3/8	.37
1/2	.50
5/8	.62
3/4	.75
7/8	.87
1	1.00

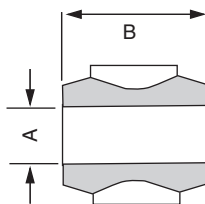
MOUNTING CODES

STEM



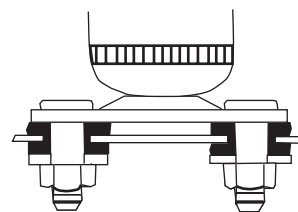
CODE	THREAD
S1	M10
S2	M12
S3	3/8 - 24
S4	3/8 - 16
S5	1/2 - 13
S6	5/8 - 11

LOOP MOUNTING



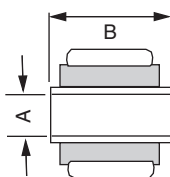
CODE	A	B
L1	5/8	1 5/16
L2	1 1/16	1 9/16
L3	3/4	1 9/16
L4	1	1 3/4
L5	1 1/4	2 9/16

STUD PLATE



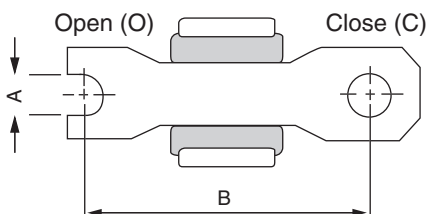
CODE SP

BUSHING & SLEEVE



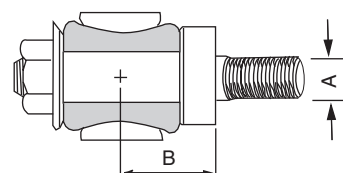
CODE	A	B	CODE	A	B	CODE	A	B	CODE	A	B
LS1	10MM	1 5/16	LS23	12MM	1 1/4	LS45	14MM	2 7/16	LS67	3/4	1 11/16
LS2	10MM	1	LS24	12MM	1 3/8	LS46	14MM	3 1/8	LS68	3/4	1 7/8
LS3	10MM	1 1/4	LS25	12MM	1 7/16	LS47	9/16	1 5/8	LS69	3/4	1 15/16
LS4	10MM	1 3/8	LS26	12MM	1 1/2	LS48	9/16	2 7/16	LS70	3/4	2 1/4
LS5	10MM	1 7/16	LS27	12MM	1 9/16	LS49	5/8/16MM	1 3/16	LS71	3/4	2 3/4
LS6	10MM	1 9/16	LS28	12MM	1 5/8	LS50	5/8/16MM	1 1/2	LS72	7/16	2
LS7	10MM	1 5/8	LS29	12MM	1 3/4	LS51	5/8/16MM	1 9/16	LS73	7/16	2 1/2
LS8	10MM	2	LS30	12MM	1 7/8	LS52	5/8/16MM	1 11/16	LS74	12MM	1 11/16
LS9	10MM	2 1/8	LS31	12MM	2	LS53	5/8/16MM	2	LS75	20MM	1 3/4
LS10	10MM	2 3/8	LS32	12MM	2 1/8	LS54	3/4	1 3/4	LS76	1/2	2 3/8
LS11	10MM	3	LS33	12MM	2 5/16	LS55	18MM	1 5/8	LS77	1/2	2 7/16
LS12	7/16	1 1/4	LS34	12MM	2 7/8	LS56	20MM	1 9/16	LS78	9/16	1 1/2
LS13	7/16	1 5/16	LS35	1/2	1 1/4	LS57	20MM	2	LS79	5/8/16MM	1 3/8
LS14	7/16	1 3/8	LS36	1/2	1 5/16	LS58	20MM	2 7/16	LS80	5/8/16MM	1 3/4
LS15	7/16	1 7/16	LS37	1/2	1 3/8	LS59	3/4	3 13/16	LS81	5/8/16MM	1 7/8
LS16	7/16	1 5/8	LS38	1/2	1 1/2	LS60	3/4	3 3/16	LS82	5/8/16MM	1 1/2
LS17	7/16	1 7/8	LS39	1/2	1 5/8	LS61	5/8/16MM	4	LS83	18MM	2
LS18	7/16	2 1/8	LS40	1/2	1 11/16	LS62	5/8/16MM	2 9/16	LS84	12MM	2 3/8
LS19	7/16	3 3/16	LS41	1/2	2 1/4	LS63	1/2	1 1/2	LS85	5/8/16MM	1 3/16
LS20	7/16	3 3/8	LS42	14MM	1 5/16	LS64	21MM	1 15/16	LS86	3/4	2 5/16
LS21	12MM	1	LS43	14MM	1 9/16	LS65	1	2			
LS22	12MM	1 1/8	LS44	14MM	1 7/8	LS66	3/4	1 3/8			

CROSS PIN MOUNTING



CODE	END	A	B	CODE	END	A	B
XP1	O	5/16	2 3/16	XP8	O	5/16	3
XP2	O	5/16	2 3/8	XP9	O	5/16	3 5/8
XP3	O	5/16	2 7/16	XP10	O	3/8	2 5/8
XP4	C	5/16	2 7/16	XP11	C	3/8	2 3/4
XP5	C	5/16	2 1/2	XP12	O	3/8	3 3/16
XP6	O	5/16	2 3/4	XP13	C	12MM	2 15/16
XP7	C	5/16	2 7/8				

CANTILEVER PIN MOUNTING



CODE	A	B
CP1	1/2	1 1/16
CP2	1/2	1 3/16
CP3	1/2	1 5/16
CP4	1/2	1 1/2
CP5	5/8	1 5/16