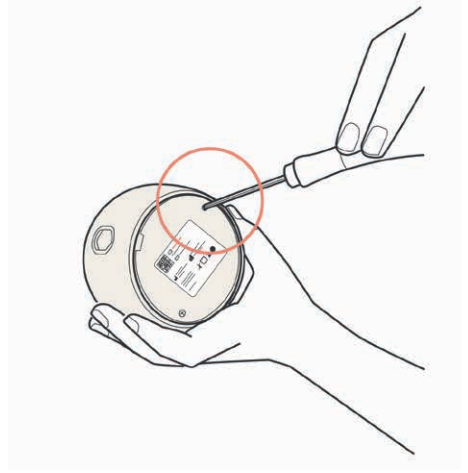
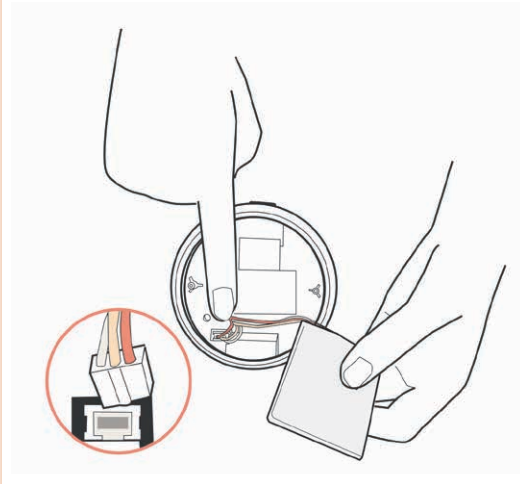


Replacing the pump's battery:

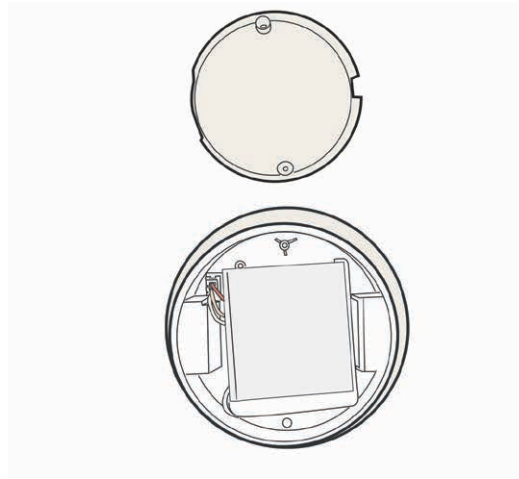
1. Unscrew the two screws on both sides of the pump's back cover.



2. Remove the old battery while making sure to disconnect the connector.



3. Plug in the connector of the new battery and place the battery next to the cables while the yellow tape is opposite to the connector
4. Screw back the plastic cover.
 - Charge the battery.
 - Try turning the device on again.



Please make sure to follow the disposal instruction in Chapter 10 when replacing the battery.

Please visit the Annabella website for the most updated troubleshooting. The pump is not a serviceable device. If you have tried all the previous options, and none has solved your problem, please contact our customer service.