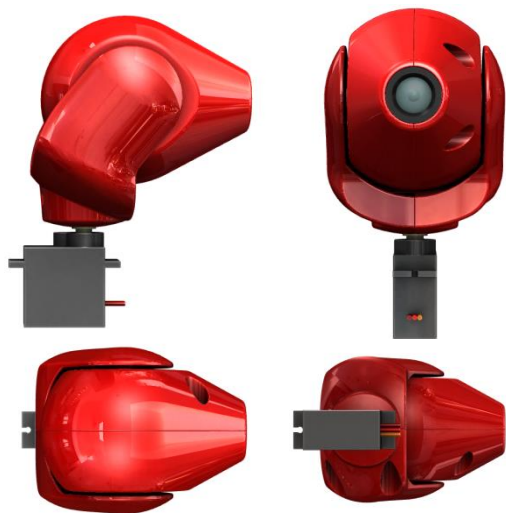


RV Mini Pan & Tilt – For KX6 camera module

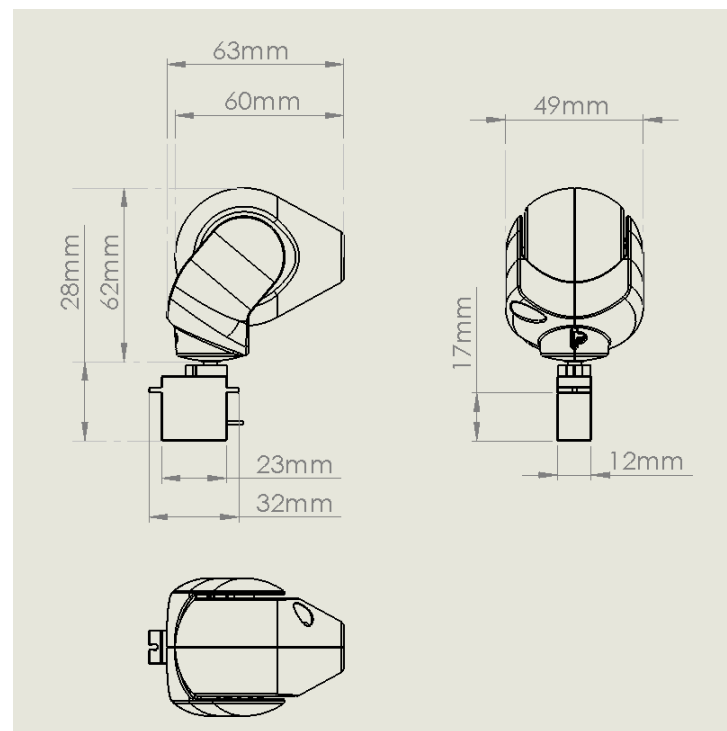


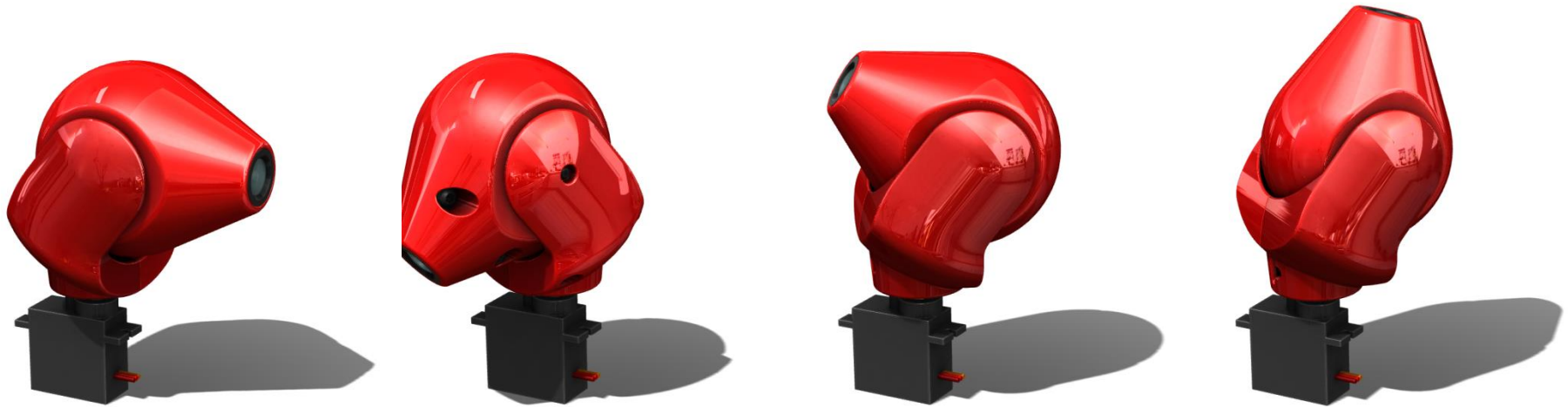
RV Mini Pan &Tilt – For KX6 camera module



Features:

- Unique streamlined design
- Optimised for the popular KX6 camera module
- Very low drag coefficient
- Compact and robust design
- No external cables
- 260 degree pan servo included (metal gear)
- 180 degree tilt servo included
- Weight: ≈ 77 grams (including KX6 camera module)
- Mountable options:
 - On top of air frame
 - Hanging under air frame (between landing gear)
 - Pointing forward (Roll & tilt function)

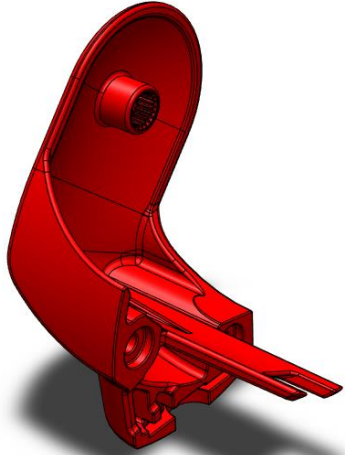




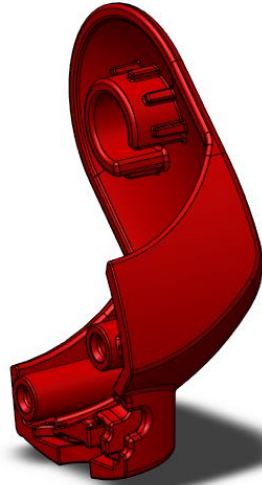
!! IMPORTANT !!

- Please read through the **complete** instructions prior to assembly and follow them...
- The last assembly step [8] is somewhat tricky. Please ensure no cables get pinched
- The movement of the tilt should be smooth. If not, please redo step [8]
- The supplied screws are specially designed for assembly and disassembly but:
 - **Do NOT over-tighten the screws – you will strip the thread of the plastic parts!!! –**

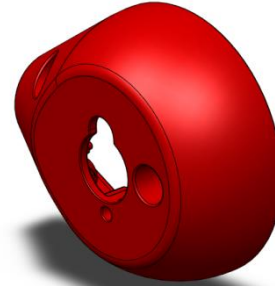
RV Mini Pan &Tilt – Parts overview



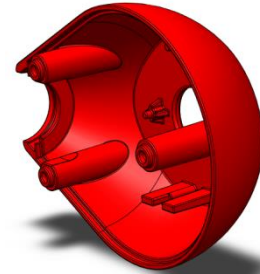
1x
Left bracket



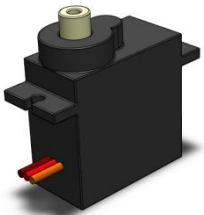
1x
Right bracket



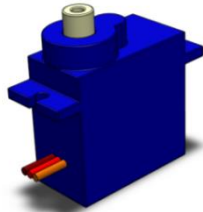
1x
Left housing



1x
Right housing



1x
Pan servo
+ screws



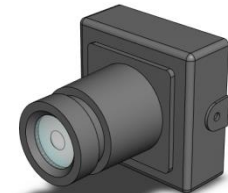
1x
Tilt servo
+ screws



1x
Servo cross

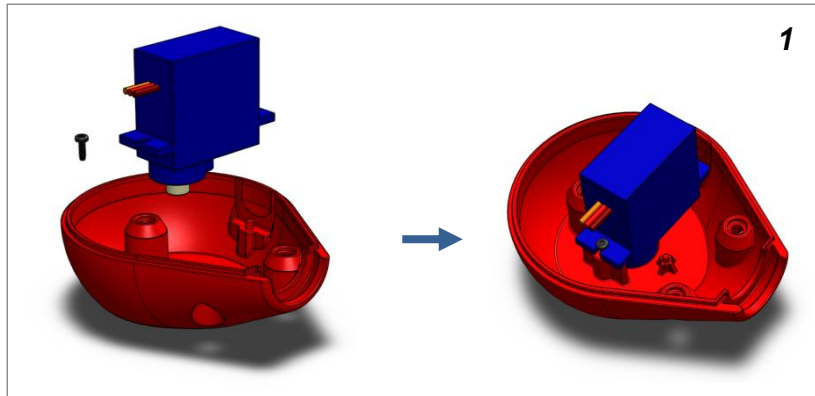


5x
Large screw

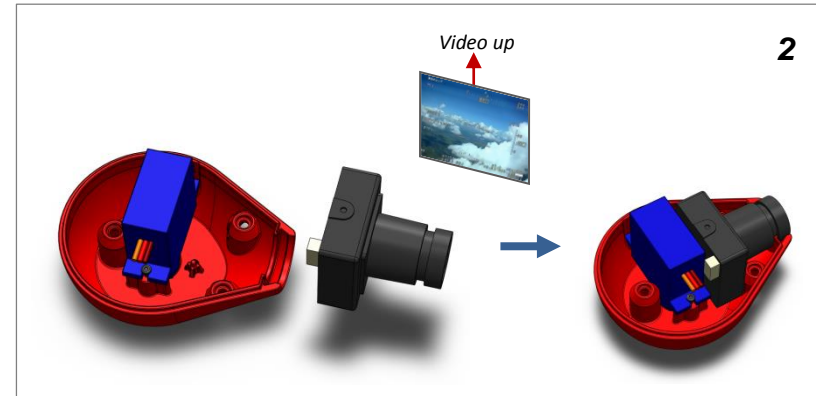


1x
KX6 (optional)

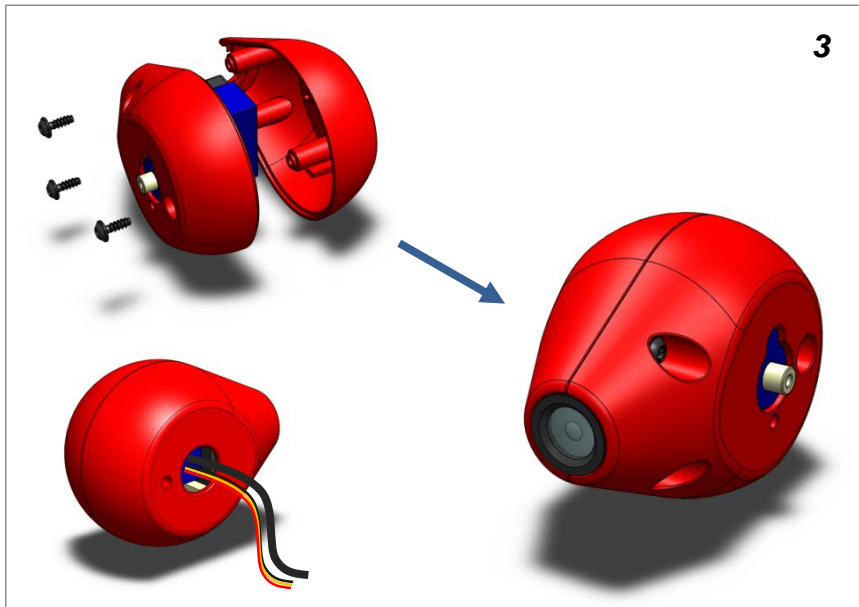
RV Mini Pan & Tilt – Assembly



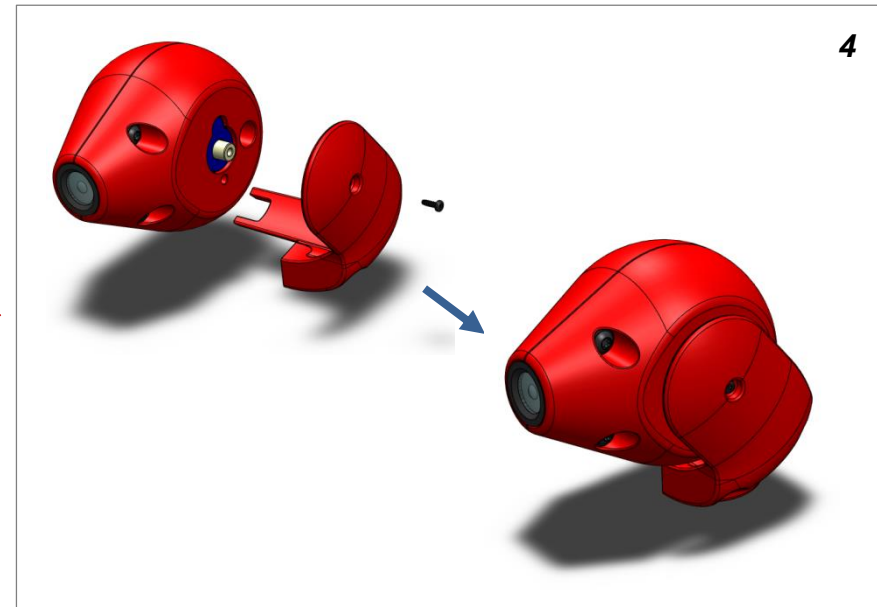
Mount tilt servo in left housing and secure with small screw supplied with this servo [Do not over-tighten!]



Insert KX6 camera, making sure the desired video orientation is correct (mounting the camera upside down is a bit of a squeeze but possible)

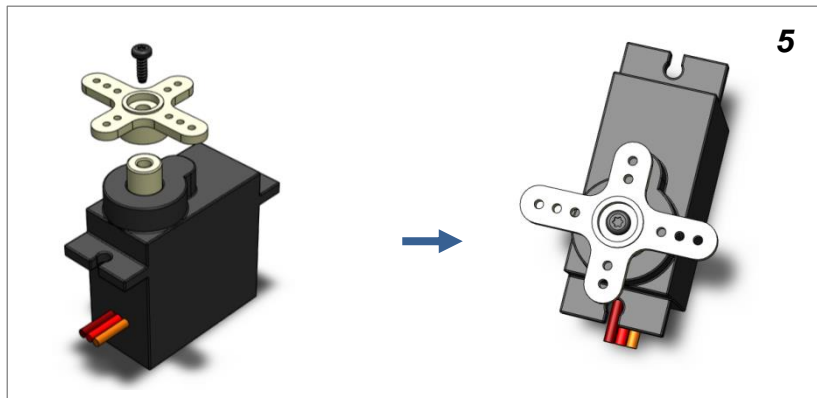


Feed the servo and video cables through the hole in the right housing and secure the assembly with 3 large screws

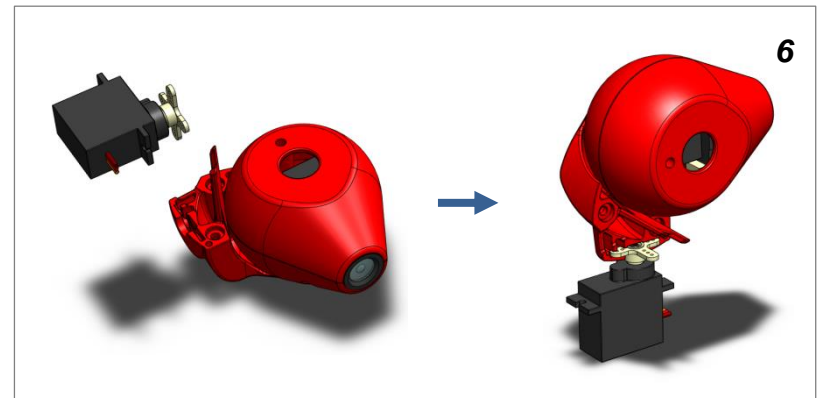


Assemble the left bracket to the servo shaft, making sure the servo can reach all the desired positions. Secure with horn screw

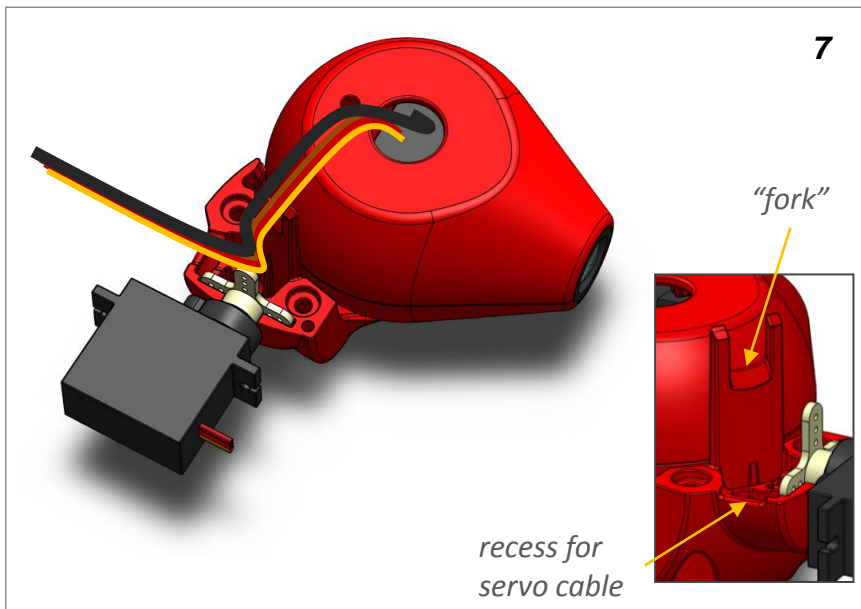
RV Mini Pan & Tilt – Assembly



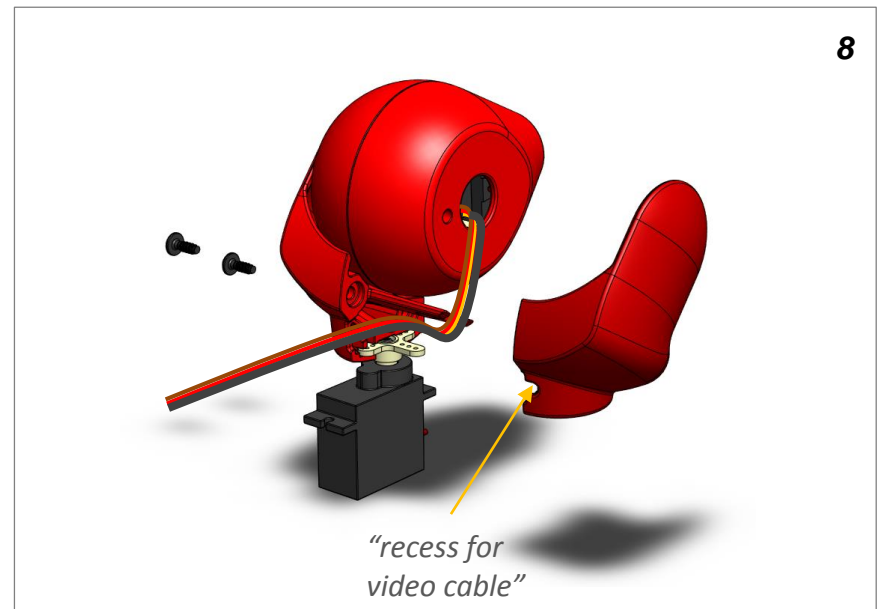
Push the servo horn onto the pan servo and secure with supplied screw.
Make sure the servo is centred!



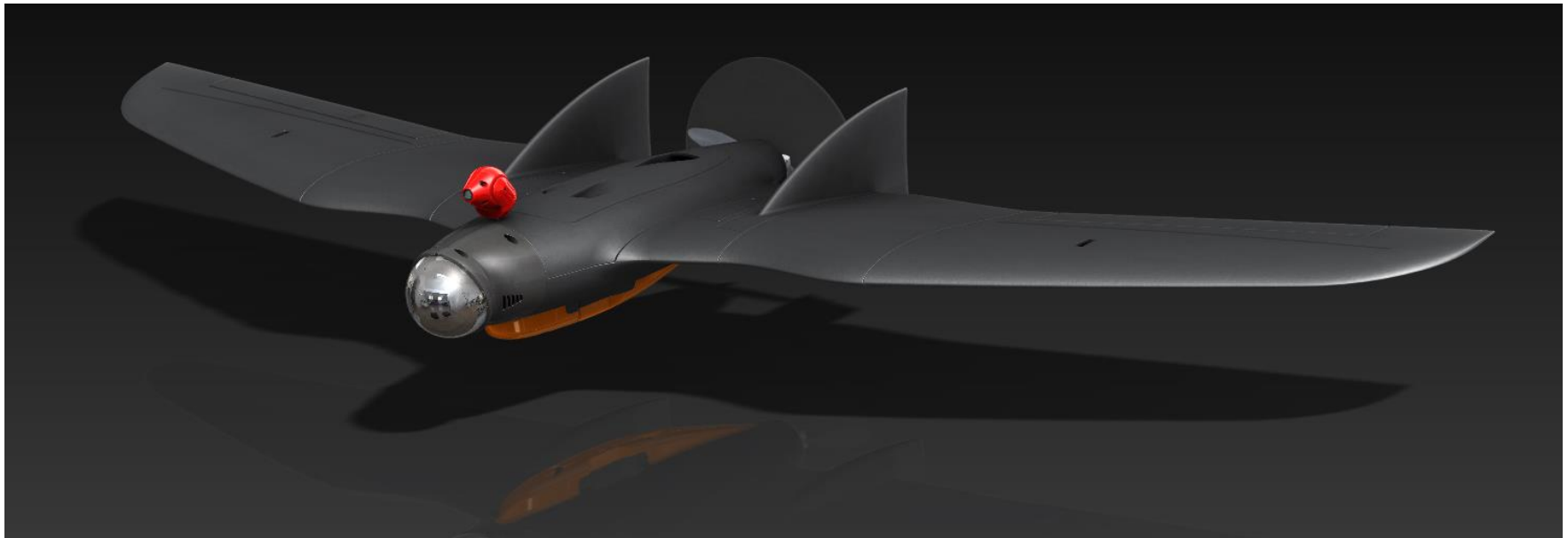
Push the servo horn firmly into the left bracket.
The fit is made tight on purpose to eliminate vibration.



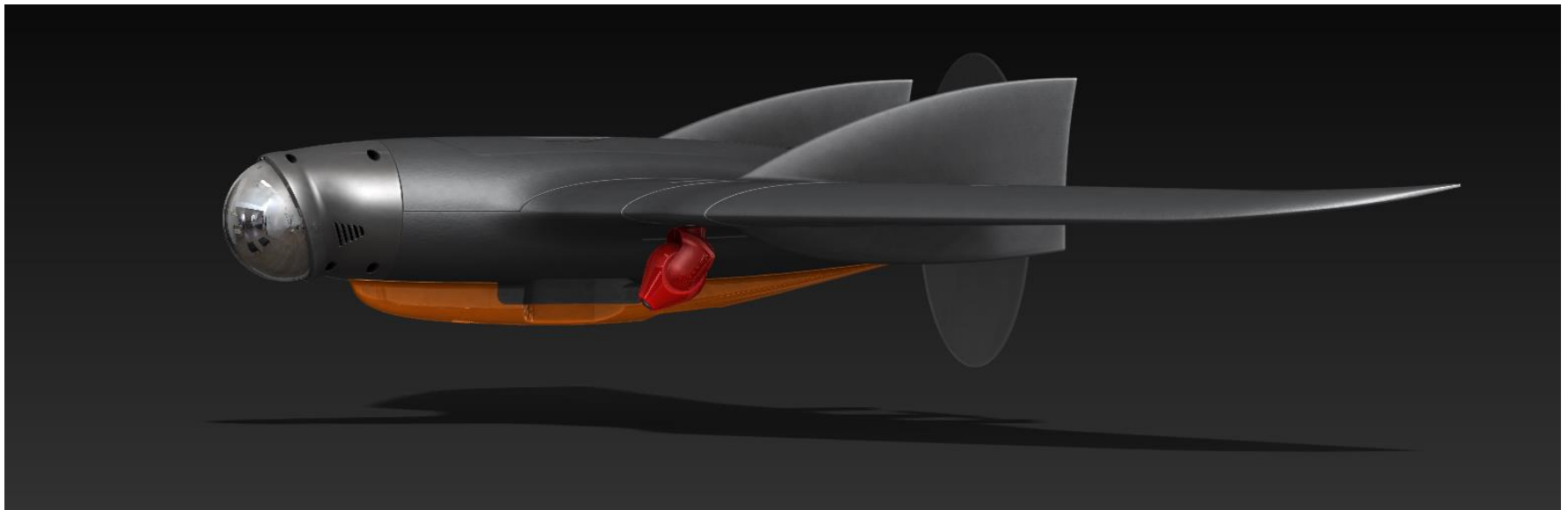
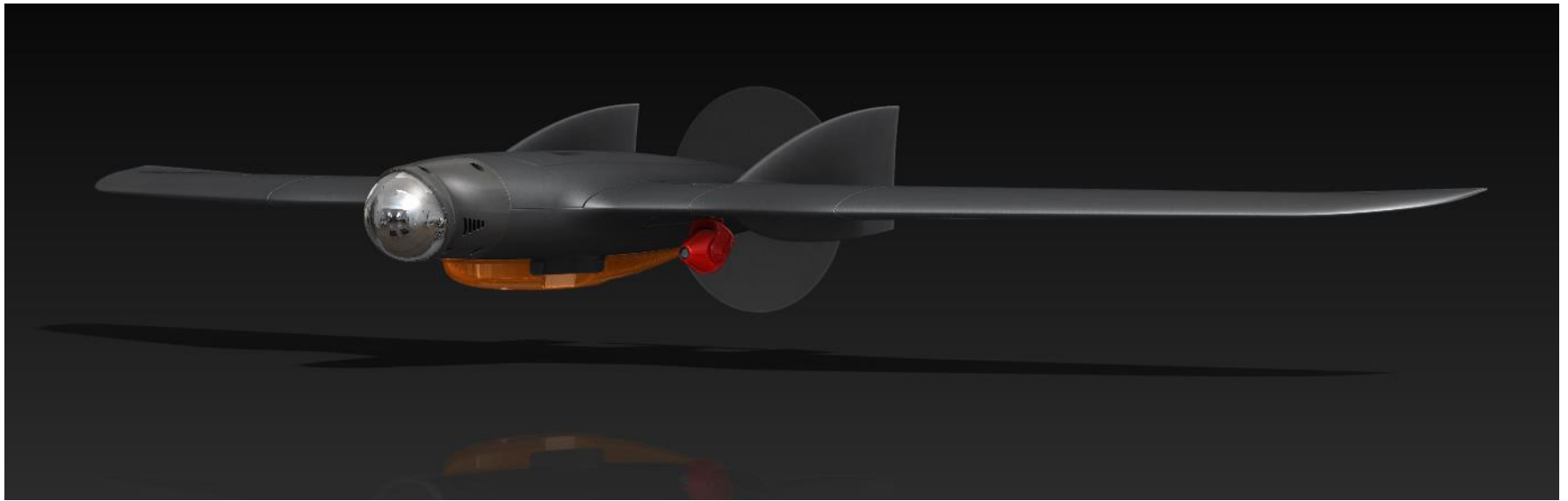
Route the servo cable and video cable through the "fork" and lay them in slight the recess on the rear of the bracket. Video cable on top.



Finally, carefully assemble the right bracket, **making 100% sure** that the cables don't get pinched in the pivot area. Secure with 2 large screws.



RV Mini Pan &Tilt – CONGRATULATIONS



RV Mini Pan &Tilt – Size comparison



GoPro II camera



RV Micro Pan & Tilt



RV Mini Pan & Tilt