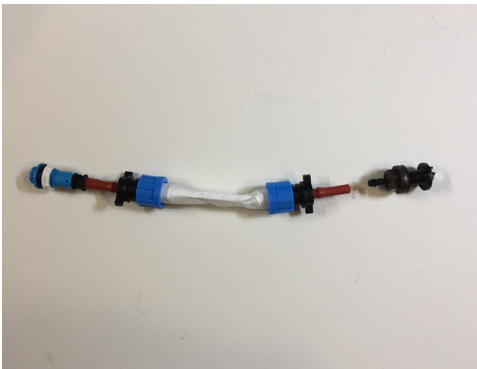


COMPOST TEA BUBBLER

INSTALLATION INSTRUCTIONS

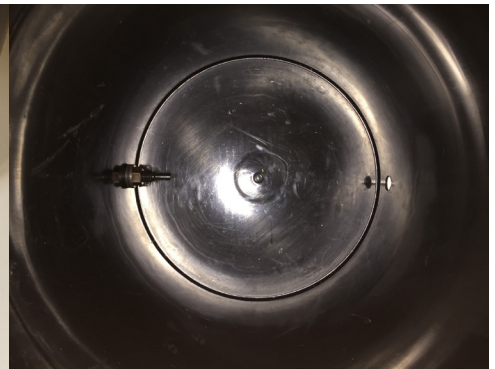
1. Start with a standard 5 gallon bucket.
2. Drill one 3/8" hole on a side wall 1" above the bottom. On the other side of the bucket, directly opposite of the first hole, drill a 1/2" hole.
3. Remove the brown bulk head fitting nut from the 8 mm tubing.
4. Insert the black bulkhead fitting into the 3/8" hole with the barb facing into the bucket.
5. On the inside of the bucket, replace the rubber washer and screw on the nut.



Step 3 (a)

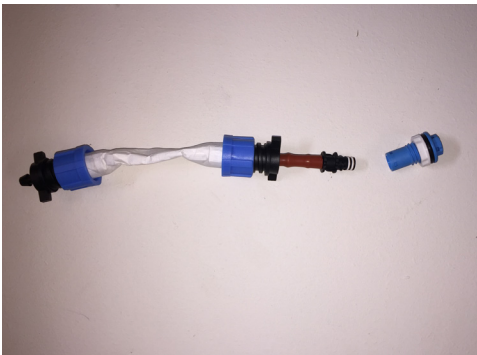


Step 3 (b)

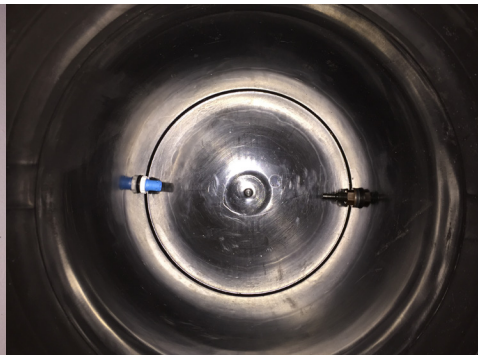


Step 5

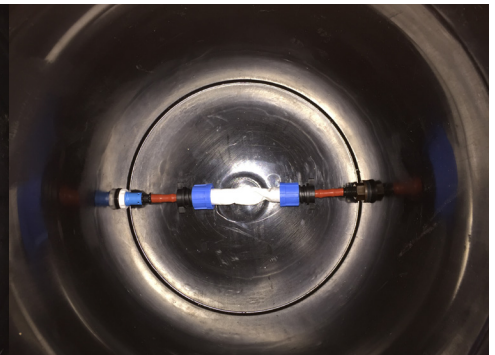
6. Disconnect the black quick connect fitting from the blue quick connect bulkhead.
7. Remove the white nut and black rubber washer from the blue threaded barb.
8. Insert the blue threaded barb into the 1/2" hole with the barb facing into the bucket.
9. On the inside of the bucket, replace the rubber washer and screw on the white nut.
10. Inside the bucket, reconnect the BlueSoak assembly to the black bulkhead fitting barb, then reconnect the black quick connect fitting into the blue quick connect bulkhead.



Step 6



Step 9



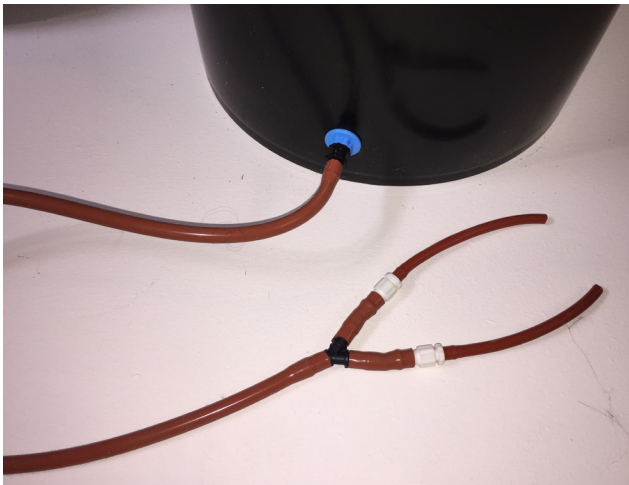
Step 10

COMPOST TEA BUBBLER

INSTALLATION INSTRUCTIONS (CONTINUED)

11. Connect the air supply line to the outside of the bucket using the black quick connect fitting.

12. Plug the two 1/4" tubes into the air pump.



Step 11



Step 12

**ADD YOUR FAVORITE COMPOST TEA INGREDIENTS
INTO THE TEA STRAINING BAG AND BREW AWAY!**

