



GM-S05 SMALL COPPER WIRE GRANULATOR

30~50 kg/h



✓ Description

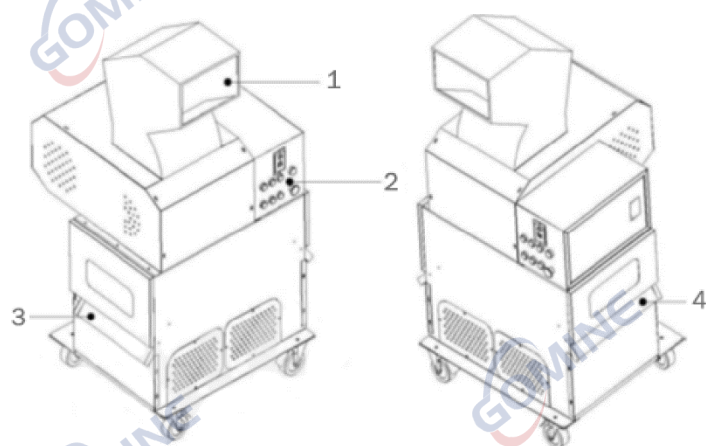
GM-S05 small copper wire granulator is a small size copper wire shredder and separator machine, it can be powered by single phase or three phase, very good choice for small business and wholesale.

This small copper wire granulator machine is mainly used for process copper and aluminum wires, such as household wires, industrial wires, automotive wires, etc. The process range is 0.1~30mm, and the process capacity is 30 ~ 50kg/h.

✓ Technical Parameter

<i>Parameters</i>	
Model	GM-S05
Machine Size	870mm*820mm*1520mm
Weight	233kg
Power	3.9KW
Voltage	220V / 380V 50Hz / customized
Processing Range	Wire diameter(Φ) \leq 30mm
Capacity	30~50kg/h

✓ Machine Structure

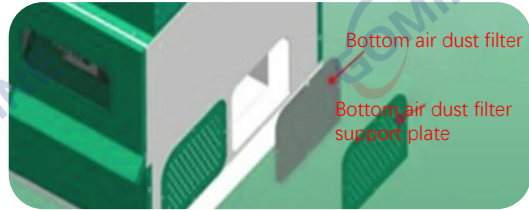


1. Inlet
2. Machine Regulator Switch
3. Outlet For Plastic
4. Outlet For Copper

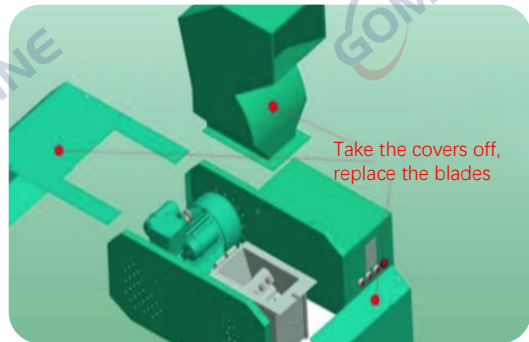
[illegible][illegible]

✓ GM-S05 Trouble Shooting

1. Check if bottom wind force is enough.
Adjust the wind force.
2. Check if screen is blocked, clean it or replace it.
3. If the shaking frequency is too fast, reduce the rotating speed (the rotating speed of the shaking table can be adjusted), adjust it slowly according to the particles size the coppers, and wait for a certain time when adjusting the speed. After the coppers at the outlet is clean, remember the value of the speedometer.



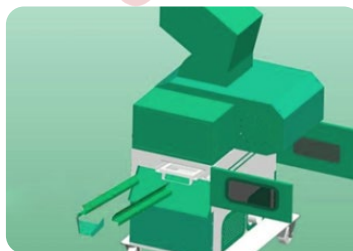
4. Observe whether the length of the discharged coppers or the copper wire is hooked after crushing. If the coppers is too long or the copper wire is hooked, it indicates that the blade of the crusher is not sharp, and the blade should be replaced or grinded.
(Note: the gap between the moved and fixed blades should be guaranteed to be between 0.1 -0 3mm after the blade is replaced or grinded and 1 stalled again)



5. The shaking screen is blocked. If it has been used for a long time or the working situation is poor, dust and foreign matters are easy to lock the vibrating screen of the shaker. Replace or remove the screen and clean the dust or foreign matters with air blowing grab.



Open two sides plates (windows) before replacing the shaker vibrating screen



Remove these sheets of metal before removing the screen



Clean the shaker screen with an air blower

✓ Operating notes

Boot sequence:

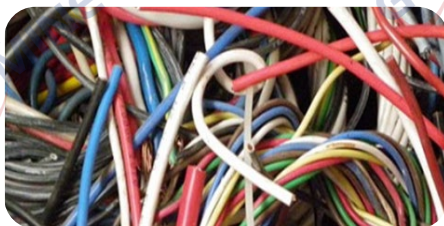
1. Turn on the fan
2. Turn on the vibrating screen
3. Turn on the crusher (when starting the crusher, pay attention to whether there is any abnormal noise in the crusher. If there is any abnormal sound, open the crusher cover to check whether there is any foreign matter entering, so as to prevent damage to the machine).

Shutdown sequence:

1. Turn off the crusher
2. Turn off the vibrating screen
3. Turn off the fan.

Tips

1. After starting the machine, check whether the copper outlet is stable?
(Smooth copper is discharged in a linear shape, not more on one side and less on the other side). If the copper is more on one side and less on the other side, it means that there is a difference in height between the left and right sides of the shaker, and the shaker should be corrected.
2. Precautions for feeding: When feeding, do not feed too much at one time, and try to feed a small amount and multiple times in combination with the capacity of the machine (the interval between each feeding and the crushing of the last feeding should not be too frequent to avoid jamming).



Φ2-3mm
30cm length
5~6pcs per time

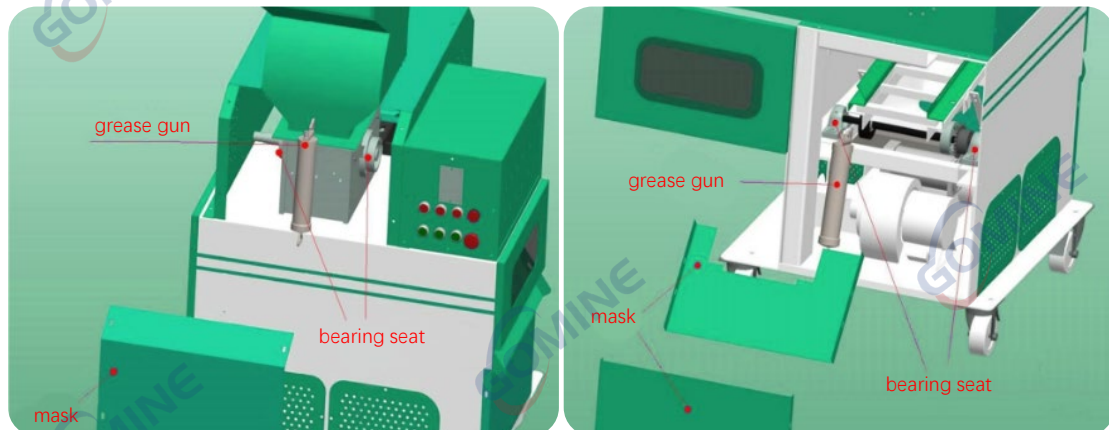


Φ20mm
20cm length
1~2pcs per time

Routine maintenance:

1. Crusher blades should be removed and replaced with new ones or sharpened after working continuously for 1 week.
2. Grease the running parts of the machine every week.

When adding butter, remove the mask in the picture below, and then use a grease gun. to add butter to the bearing or bearing seat.



Henan Gomine Environmental Protection Technology Co., Ltd.



Website: <https://www.gominer recycling.com>

Email: info@gominer recycling.com

Tel: +86 18595689287

Address: No.279, West 3rd Ring Road, National Hi-Tech Industrial Development Zone, Zhengzhou, China