



Free Spirit 

Jade Song and Dance Lap Quilt

Featuring *Bright Eyes* by Anna Maria

Bright fabrics sing and dance in a do-si-do of color and textures.

Collection:	Bright Eyes by Anna Maria
--------------------	---------------------------

Technique:	Directional Cutting, Piecing
-------------------	------------------------------

Finished Size:	Finished Project Size:
	44" x 60" (112cm x 153cm)
	Finished Block Size:
	8" x 8" (20.32cm x 20.32cm)

All possible care has been taken to assure the accuracy of this pattern. We are not responsible for printing errors or the manner in which individual work varies. Please read the instructions carefully before starting this project. If kitting, it is recommended a sample is made to confirm accuracy.

Project designed by Lucy A. Fazely | Tech edited by Alison M. Schmidt

Fabric Requirements

DESIGN	COLOR	ITEM ID	YARDAGE
(A) Dot Your Eyes	Jade	PWAH156.JADE	$\frac{3}{8}$ yard (0.34m)
(B) Picky	Gold	PWAH159.GOLD	$\frac{1}{4}$ yard (0.23m)
(C) In Town	Sweet	PWAH158.SWEET	$\frac{1}{4}$ yard (0.23m)
(D) Cheering Section	Blush	PWAH154.BLUSH	$\frac{1}{4}$ yard (0.23m)
(E) Stacked	Lunch	PWAH160.LUNCH	$\frac{1}{4}$ yard (0.23m)
(F) Facets	Aqua	PWAH157.AQUA	$\frac{1}{4}$ yard (0.23m)
(G) Visitation	Seafoam	PWAH161.SEAFOAM	$\frac{1}{4}$ yard (0.23m)
(H) Cosmos	Ocean	PWAH155.OCEAN	$\frac{1}{4}$ yard (0.23m)
(I) Brimming	Cream	PWAH152.CREAM	$1\frac{1}{2}$ yards (1.37m)
(J) Michaelmas Daisy	Ivory	PWWM035.IVORY	$\frac{5}{8}$ yard (0.57m)
(K) Designer Essential Solids	Cobalt	CSFSESS.COBAL*	$1\frac{1}{8}$ yards (1.03m)

* includes binding

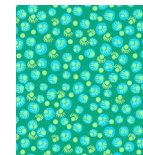
Backing (Purchased Separately)

44" (7.43m) wide

Picky	Gold	PWAH159.GOLD	3 yards (2.7m)
-------	------	--------------	----------------

Additional Recommendations

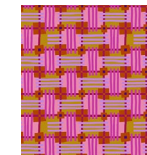
- 100% cotton thread in colors to match
- 52" x 68" (132cm x 173cm) batting



(A)



(B)



(C)



(D)



(E)



(F)



(G)



(H)



(I)



(J)



(K)



Backing
44"

Cutting:

WOF = Width of Fabric, strips cut from selvage to selvage

LOF = Length of Fabric, strips cut parallel to selvage

Fabric A, cut:

- (2) $6\frac{7}{8}$ " x WOF strips, subcut
- (8) $6\frac{7}{8}$ " squares

Fabrics B, D, F, and G, cut from each:

- (1) $6\frac{7}{8}$ " x WOF strip, subcut
- (3) $6\frac{7}{8}$ " squares

Fabrics C and E, cut from each:

- (1) $6\frac{7}{8}$ " x WOF strip, subcut
- (2) $6\frac{7}{8}$ " squares

Fabric H, cut:

- (5) $1\frac{1}{2}$ " x WOF strips for inner border

Fabric I, cut:

- (4) $5\frac{1}{2}$ " x LOF strips for outer border

Fabrics J and K, cut from each:

- (3) $2\frac{7}{8}$ " x WOF strips, subcut
- (36) $2\frac{7}{8}$ " squares
- (3) $2\frac{1}{2}$ " x WOF strips, subcut
- (48) $2\frac{1}{2}$ " squares

Fabric K only, cut:

- (6) $2\frac{1}{2}$ " x WOF strips for binding

Prep

1. Cut all the $2\frac{7}{8}$ " and $6\frac{7}{8}$ " squares in half diagonally as indicated. **Figs 1 - 8**

Fig. 1

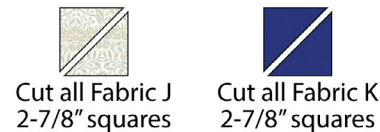


Fig. 2



Fig. 3

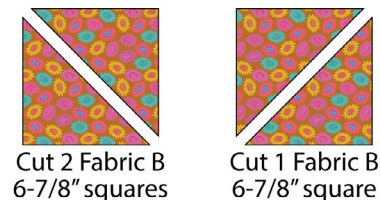


Fig. 4



Fig. 5

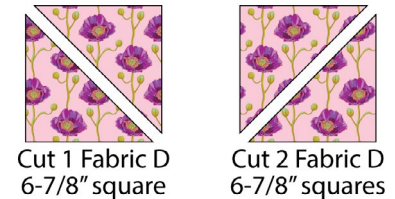


Fig. 6

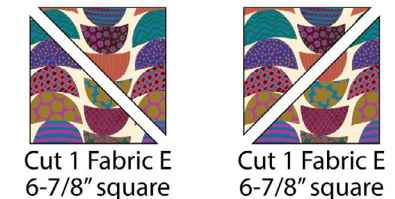


Fig. 7

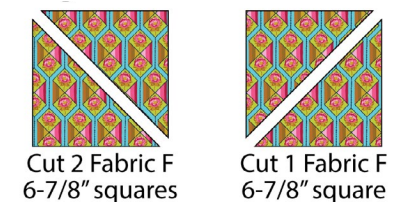


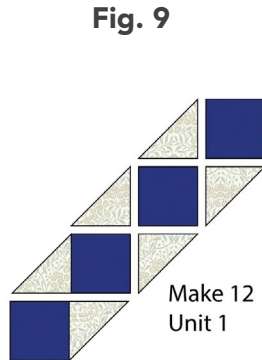
Fig. 8



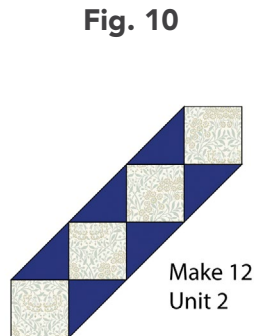
Sewing

All seam allowances are $\frac{1}{4}$ " (0.64cm) and pieces are sewn right sides together. Press after each seam.

2. Arrange (4) $2\frac{1}{2}$ " **Fabric K** squares and (6) $2\frac{7}{8}$ " **Fabric J** triangles in (4) rows as shown. Sew squares and triangles into rows. Sew rows together. Make a total of (12) Unit 1. **Fig. 9**



3. Arrange (4) $2\frac{1}{2}$ " **Fabric J** squares and (6) $2\frac{7}{8}$ " **Fabric K** triangles in (4) rows as shown. Sew squares and triangles into rows. Sew rows together. Make a total of (12) Unit 2. **Fig. 10**



4. Referring to the **Quilt Layout** diagram on page 5, sew (2) $6\frac{7}{8}$ " triangles to opposite sides of all Unit 1 and Unit 2 to complete 24 blocks. Blocks are $8\frac{1}{2}$ " (21.59cm) square including seam allowance.

Quilt Top Assembly

Measure the Quilt Center width and height before adding borders. Adjust border measurements where necessary to match your measurements.

5. Referring to the finished quilt image and the **Quilt Layout** diagram, on page 5 arrange blocks in (6) rows of (4) blocks each. Sew blocks into rows, pressing seam allowances in each row in the same direction, and alternating direction from row to row. Sew rows together, nesting seam allowances, into quilt center, $32\frac{1}{2}$ " x $48\frac{1}{2}$ " (82.55cm x 123.19cm) unfinished.
6. Sew (3) $1\frac{1}{2}$ " **Fabric H** strips together end-to-end. Cut into (2) side borders $48\frac{1}{2}$ " long; sew borders to right and left sides of quilt center. Trim remaining **Fabric H** strips to $34\frac{1}{2}$ "; sew to top and bottom of quilt center.
7. Trim (2) $5\frac{1}{2}$ " x LOF **Fabric I** strips to $50\frac{1}{2}$ "; sew to right and left sides of quilt. Trim remaining **Fabric I** strips to $44\frac{1}{2}$ "; sew to top and bottom of quilt.

Finishing

8. Sew together the (6) $2\frac{1}{2}$ " x WOF **Fabric K** binding strips end-to-end using diagonal seams. Press the seams open. Press the binding strip in half wrong sides together.
9. Layer the backing (wrong side up), batting, and quilt top (right side up). Baste the layers together and quilt as desired. Trim excess batting and backing even with the quilt top after quilting is completed.
10. Leaving an 8" (20.32cm) tail of binding, sew binding to top of quilt through all layers matching all raw edges. Miter corners. Stop approximately 12" (30.48cm) from where you started. Lay both loose ends of binding flat along quilt edge. Where these two loose ends meet, fold them back on themselves and press to form a crease. Using this crease as your stitching line, sew the two open ends of the binding together right sides together. Trim seam to $\frac{1}{4}$ " and press open. Finish sewing binding to quilt.
11. Turn the binding to the back of the quilt and hand stitch in place.

Quilt Layout

