

live letter

COLLECTION of REC



Designer Ufuk CEYLAN

REC BERGERE

REC BERGERE, which you can enjoy using in your living room, office, or waiting area, stands out with its durable and long-lasting felt fabric in addition to its matte chrome square design. Designed in a futuristic style, the Rec Bergere combines geometric shapes such as square chrome armrests and triangular details on the sides of the seat.

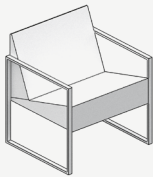
Teşvikiye Mahallesi,
Güzelbahçe sokak, No:1A
Nişantaşı, Şişli / İSTANBUL

lagu.shop
info@lagu.com.tr

+90 850 305 52 48
+90 533 498 52 48

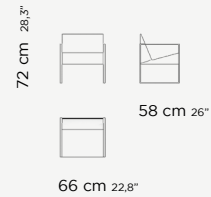


REC BERGERE



DIMENSIONS

H: 72 cm / 28,3 inc
 D: 58 cm / 26 inc
 W: 66 cm / 22,8 inc



USER GUIDE

USER GUIDE OF UPHOLSTERED FURNITURE

When your upholstery is made up of fine fabrics, leather or leatherette, remember that direct sunlight will destroy your upholstery with prolonged exposure. The ultraviolet rays in sunlight work to deteriorate the condition and lifetime of your upholstery. A little exposure to the sun every now and then is harmless, but do keep your favourite upholstered furniture out of harm's way by drawing the blinds or placing them out of areas that receive direct sunlight. The longer you avoid vacuuming your upholstery, the worse the damage. Dust settles on everything in your home, your upholstery included. Whenever you sit on your sofas and chairs, the weight forces the dust down deeper into the fibers of the upholstery. With prolonged periods of no maintenance, the dust acts like an abrasive, cutting, and scraping your upholstery on a microscopic level, thus causing the material to wear out a lot faster. You should regularly flip your upholstered cushions (both the seat and the back cushions) depending on the frequency of their use. You will find that your upholstery will wear out evenly and your cushions will maintain their shape for longer.

USER GUIDE OF LEATHER

For everyday cleaning, simply wipe the surface with a clean, dry, non-abrasive, preferably white cloth. Dry dirt can be easily removed with the use of a soft bristle brush. You can also use a medium power vacuum cleaner with a suitable attachment, and avoid rubbing the surface with it. Any stains caused from water soluble substances (soft drinks, coffee, tea, milk, chocolate, oil, grease, make-up) should be removed quickly by gently dabbing the surface with a dry cloth or paper towel. Do not use a hairdryer and avoid exposing to direct sunlight.

USER GUIDE OF BRASS AND IRON

Avoid leaving household liquids (oil, red wine, vinegar, etc.) on the surface. In particular, products that contain citric acid (present for example in fruit, citrus fruit and tomatoes) act on contact with the treated surface, removing its original sheen. Always clean stains while they are still fresh. For routine maintenance use a microfiber cloth and water. Do not use products containing acids.

CAUTION

Do not place leather furniture or sofas near any source of heat such as fireplaces, stoves or radiators. The minimum distance must be 50cm. The upholstery will maintain its original colour by avoiding placing the sofa in direct sunlight or near artificial light sources, especially halogen lights. In fact both artificial light and sunlight can permanently damage leather upholstery, as can unsuitable detergents. Natural leather upholstery makes each sofa a unique piece because every hide is one of a kind. Specific Nabuk cleaner and care kit, including specific products and accessories is available upon request.

LEATHER

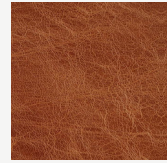
BLACK
LEATHER



BROWN
LEATHER



TABA
LEATHER



BEIGE
LEATHER



GREEN
LEATHER



STRUCTURE FINISHES

FABRIC

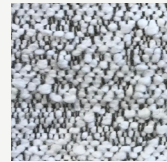
HERMES 01



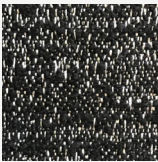
HERMES 02



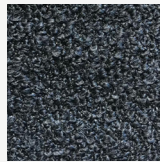
HERMES 04



HERMES 13



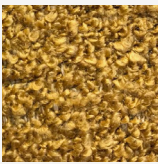
BLACK
CANDLEWICK



WHITE
CANDLEWICK



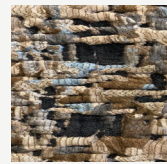
MUSTARD
CANDLEWICK



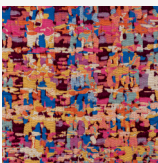
KENZO
BLUE



KENZO
BROWN



KENZO
PINK



LORD 04

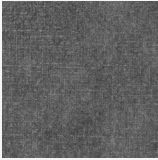


LORD 24

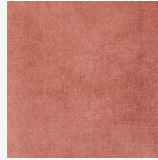


STRUCTURE FINISHES

LORD 26



LORD 29



LORD 34



LORD 38



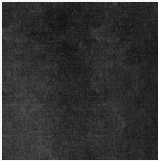
LORD 49



LORD 76



LORD 76

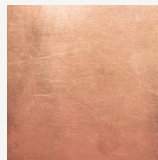


METAL

ANTIQUE
BRASS



ANTIQUE
BRONZE



CHROME
MATT



SHINY
CHROME



SMOKED SHINY
CHROME



BLACK
GOFRADO

